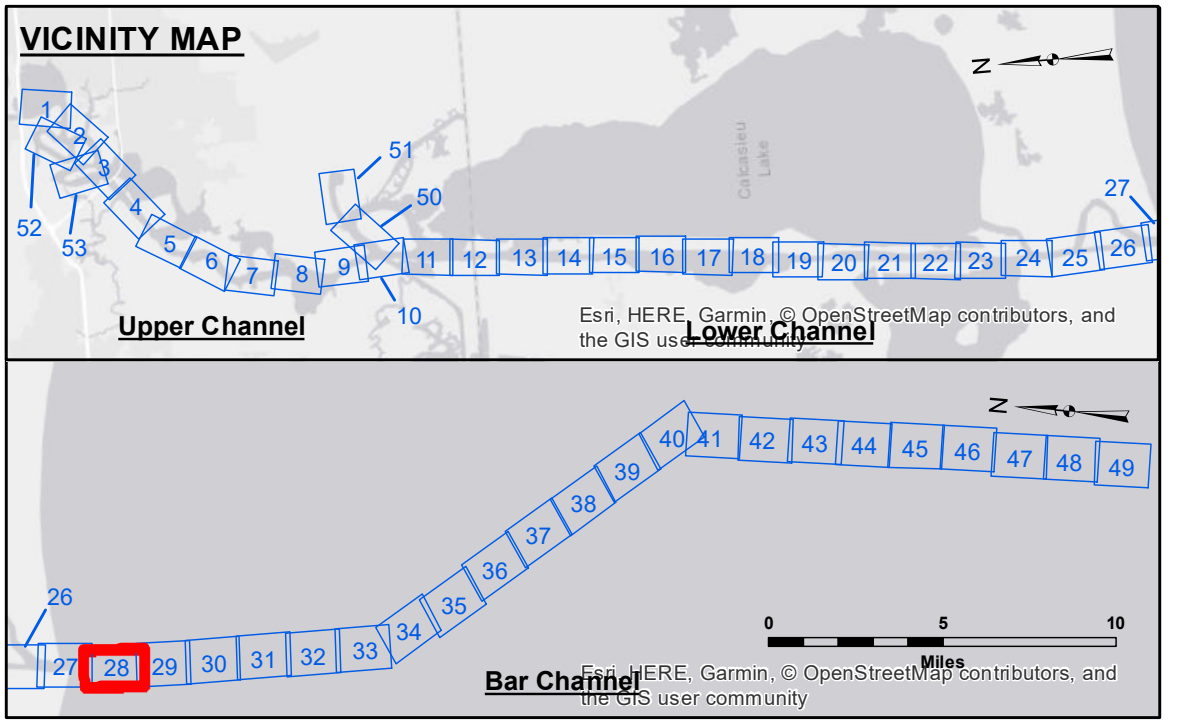


**Access Constraints:** The United States Government furnishes these data and the recipient accepts and uses them with the express understanding that the recipient is not to disseminate, reproduce, or apply these data for any purpose other than that for which they were originally intended. The recipient may not transfer these data to others without also transferring this Disclaimer. The information depicted on this map represents the results of a hydrographic survey conducted in accordance with the standards of the United States Army Corps of Engineers and is not to be used for navigation purposes. The user is responsible for the accuracy, completeness, and timeliness of the data. The user is responsible for the accuracy, completeness, and timeliness of the data. The user is responsible for the accuracy, completeness, and timeliness of the data.

U.S. ARMY CORPS OF ENGINEERS NEW ORLEANS DISTRICT		
Submitted:	Surveyed By: RYLAND/ADAMS	Plotted By: BD
Recommended:	Checked By: AC	Checked By: AC
Approved:	Chief, Waterways Maintenance Section	

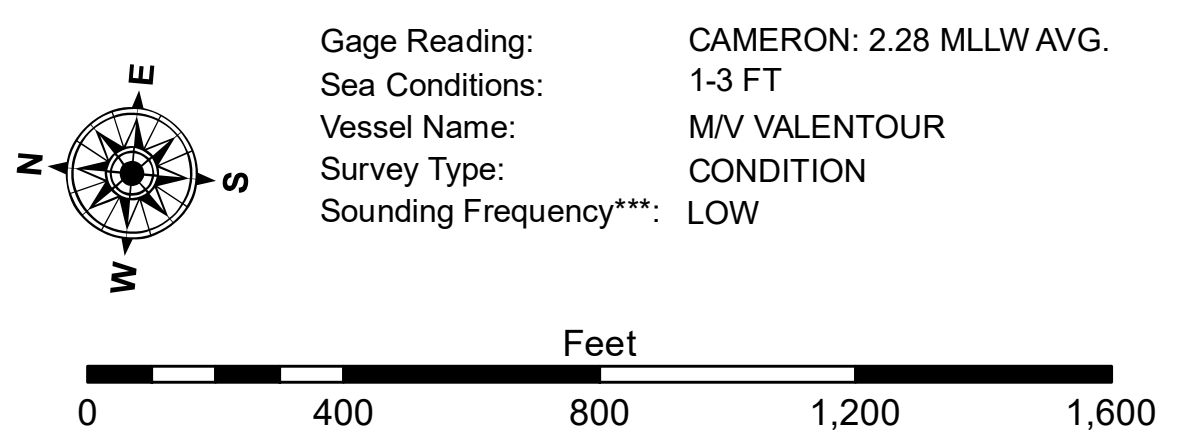
**CALCASIEU SHIP CHANNEL**  
**BAR SHEET 28**  
**CR\_28\_BAR\_20190530\_CS**  
**30 May 2019**

**Sheet Reference Number**  
**28 of 53**



**LEGEND**

--- Federal Navigation Channel	○ Cable Area	3 Fluff Thickness (feet)*	■ -16' and above
— Federal Navigation Center Line	□ Placement Area	● Shoalest Sounding**	■ -16' to -21'
— As-built Pipeline/Cable	⊗ Anchorage Area	★ Beacon, General	■ -21' to -26'
..... Unconfirmed Pipeline/Cable	⊗ Obstruction Point	◆ Red Navigation Buoy	■ -26' to -33'
— Project Depth Contour	✈ Wrecks-Submerged	◆ Green Navigation Buoy	■ -33' to -39'
			■ -39' to -41'
			■ -41' to -43'
			■ -43' and below



**NOTES:**  
 Horizontal Coordinate System: North American Datum of 1983 (NAD83), projected to the State Plane Coordinate System (SPCS), Louisiana South Zone. Distance units in U.S. Survey Feet.  
 Vertical Datum: Soundings are shown in feet and indicate depths below Mean Lower Low Water Datum (MLLW). Datum Relationships for gage 73650 as of December 2013: 0.0' NAVD88 (2009.55) = 1.3' MLLW = 2.3' MLG or 0.0' MLLW = 1.0' MLG  
 Distances on the Calcasieu River are shown at 1 mile intervals.  
 The location of navigation aids are based on and provided by the U.S. Coast Guard and USACE survey crews.  
 2015 Aerial Photography data source: NAIP  
 Reference is N.O.A.A. Navigation Chart No. 11339.  
 \* Difference between high and low frequency elevations where greater than 1.0'.  
 \*\* Shoalest Sounding per Quarter per Reach.  
 \*\*\* High frequency (200 kHz) survey data represents the first signal return at a sounding location and will include suspended solids, known as "fluff", if present. Low frequency (20 kHz) survey data normally penetrates through this "fluff" layer to depict elevations of consolidated bottom material. Low frequency accuracies may vary depending on channel conditions and fathometer settings.