

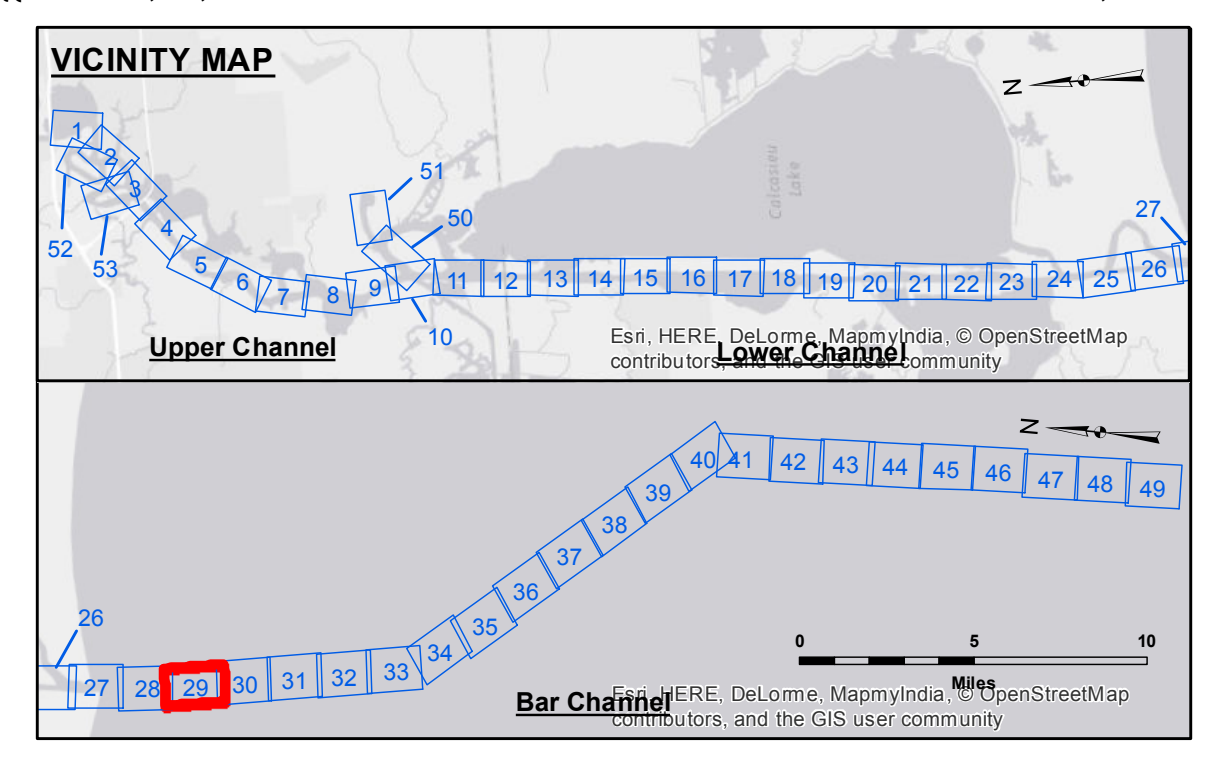
US Army Corps of Engineers District: CEMVN

Accession: The United States Government furnishes these data and the recipient accepts and uses them with the express understanding that the data are not to be used for any purpose other than that for which they were prepared, or for any purpose for which the accuracy, completeness, readability, usability or reliability for any particular purpose of the recipient is not warranted. The user is responsible for the results of any use of the data. The data are not to be used for any purpose other than that for which they were prepared, or for any purpose for which the accuracy, completeness, readability, usability or reliability for any particular purpose of the recipient is not warranted. The user is responsible for the results of any use of the data. The data are not to be used for any purpose other than that for which they were prepared, or for any purpose for which the accuracy, completeness, readability, usability or reliability for any particular purpose of the recipient is not warranted. The user is responsible for the results of any use of the data.

Submitted:	SUR, JIH
Plotted By:	AO
Checked By:	TF

U.S. ARMY CORPS OF ENGINEERS
NEW ORLEANS DISTRICT

CALCASIEU SHIP CHANNEL
BAR SHEET 29
CR_29_BAR_20160630
30 June 2016



LEGEND

--- Federal Navigation Channel	○ Cable Area	3 Fluff Thickness (feet)*	■ -15' and above
— Federal Navigation Center Line	□ Placement Area	● Shoalest Sounding**	■ -15' to -20'
— As-built Pipeline/Cable	□ Anchorage Area	★ Beacon, General	■ -20' to -25'
..... Unconfirmed Pipeline/Cable	⊗ Obstruction Point	◆ Red Navigation Buoy	■ -25' to -32'
— Project Depth Contour	⚓ Wrecks-Submerged	◆ Green Navigation Buoy	■ -32' to -38'
			■ -38' to -40'
			■ -40' to -42'
			■ -42' and below

NOTES

Horizontal Coordinate System: North American Datum of 1983 (NAD83), projected to the State Plane Coordinate System (SPCS), Louisiana South Zone. Distance units in U.S. Survey Feet.

Vertical Datum: Soundings are shown in feet and indicate depths below Mean Low Gulf Datum (MLG). Datum Relationships for gage 73650 as of December 2013: 0.0' NAVD88 (2009.55) = 1.3' MLLW = 2.3' MLG or 0.0' MLLW = 1.0' MLG

Distances on the Calcasieu River are shown at 1 mile intervals.

The location of navigation aids are based on and provided by the U.S. Coast Guard and USACE survey crews.

2015 Aerial Photography data source: NAIP

Reference is N.O.A.A. Navigation Chart No. 11339.

* Difference between high and low frequency elevations where greater than 1.0'.

** Shoalest Sounding per Quarter per Reach.

*** High frequency (200 kHz) survey data represents the first signal return at a sounding location and will include suspended solids, known as "fluff", if present. Low frequency (20 kHz) survey data normally penetrates through this "fluff" layer to depict elevations of consolidated bottom material. Low frequency accuracies may vary depending on channel conditions and fathometer settings.

Gage Reading: CAMERON: 2.9 MLG AVG
Sea Conditions: NA
Vessel Name: M/V TECHE
Survey Type: CONDITION
Sounding Frequency***: LOW

Sheet Reference Number
29 of 53

Revision Number:
3.8-9-20150202