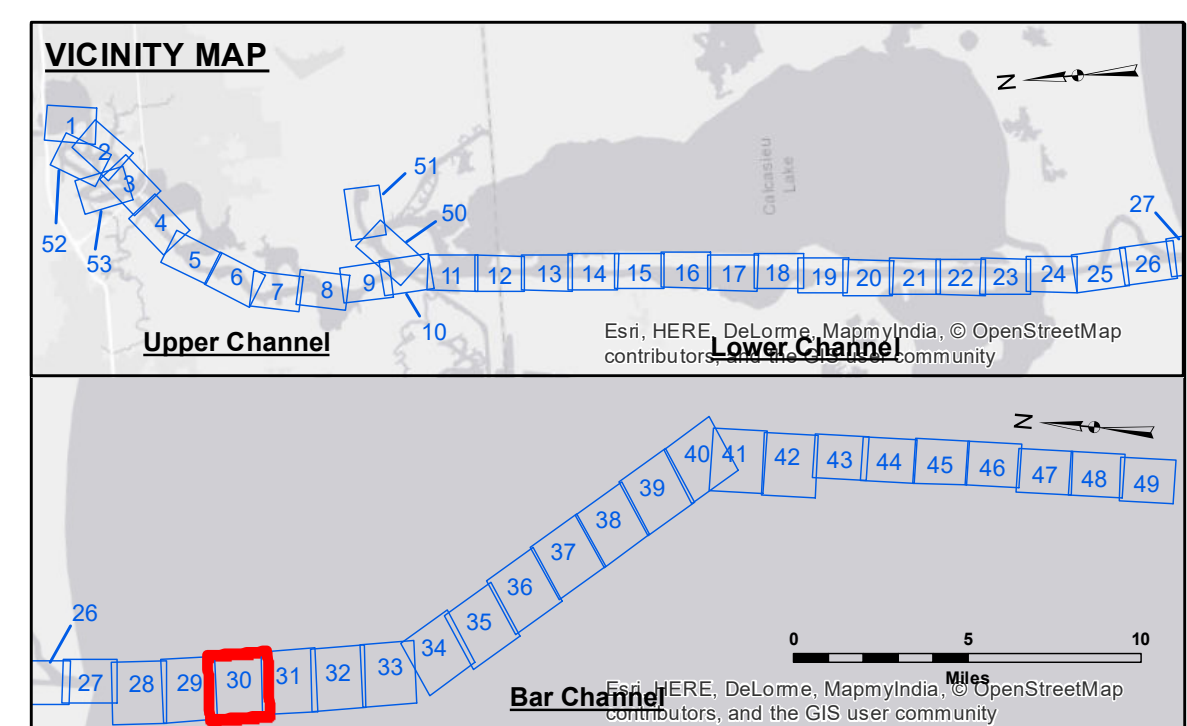


CAMERON PARISH
GULF OF MEXICO

SITE NO. 1
DISPOSAL AREA



LEGEND	
--- Federal Navigation Channel	● Cable Area
— Federal Navigation Center Line	□ Placement Area
— As-built Pipeline/Cable	□ Anchorage Area
... Unconfirmed Pipeline/Cable	⊠ Obstruction Point
— Project Depth Contour	⚓ Wrecks-Submerged
3 Fluff Thickness (feet)*	● Shoalest Sounding**
★ Beacon, General	★ Red Navigation Buoy
★ Red Navigation Buoy	★ Green Navigation Buoy

Gage Reading: CAMERON: 1.82 MLLW
 Sea Conditions: 2-3'
 Vessel Name: M/V BURRWOOD
 Survey Type: AD
 Sounding Frequency***: LOW

NOTES:
 Horizontal Coordinate System:
 North American Datum of 1983 (NAD83), projected to the State Plane
 Coordinate System (SPCS), Louisiana South Zone. Distance units in U.S. Survey Feet.
 Vertical Datum:
 Soundings are shown in feet and indicate depths below Mean Lower Low Water Datum (MLLW).
 Datum Relationships for page 73650 as of December 2013:
 0.0' NAVD83 (2009.55) = 1.3' MLLW = 2.3' MLG or 0.0' MLLW = 1.0' MLG
 Distances on the Calcasieu River are shown at 1 mile intervals.
 The location of navigation aids are based on and provided by the U.S. Coast Guard
 and USACE survey crews.
 2015 Aerial Photography data source: NAIP
 Reference is N.O.A. Navigation Chart No. 11339.
 * Difference between high and low frequency elevations where greater than 1.0'.
 ** Shoalest Sounding per Quarter per Reach.
 *** High frequency (200 kHz) survey data represents the first signal return at a sounding
 location and will include suspended solids, known as "fluff", if present. Low frequency (20 kHz)
 survey data normally penetrates through this "fluff" layer to depict elevations of consolidated bottom
 material. Low frequency accuracies may vary depending on channel conditions and fathometer
 settings.



U.S. Army Corps of Engineers
District: CEMVW

DISCLAIMER: The United States Government furnishes this information for the general information of the public and does not warrant the accuracy, reliability, or availability of the information for any particular purpose. The user is responsible for the results of any use of this information. The user is also responsible for the results of any use of this information. The user is also responsible for the results of any use of this information. The user is also responsible for the results of any use of this information.

U.S. ARMY CORPS OF ENGINEERS NEW ORLEANS DISTRICT	
Submitted:	Surveyed By: J.L.A.J.H.
Recommended:	Project By: BD
Approved:	Checked By: A.O.

Calcasieu Ship Channel
 BAR SHEET 30
 CR_30_BAFX_20180613_AD
 13 June 2018

Sheet Reference Number
 30 of 53

Revision Number:
 312-2016011