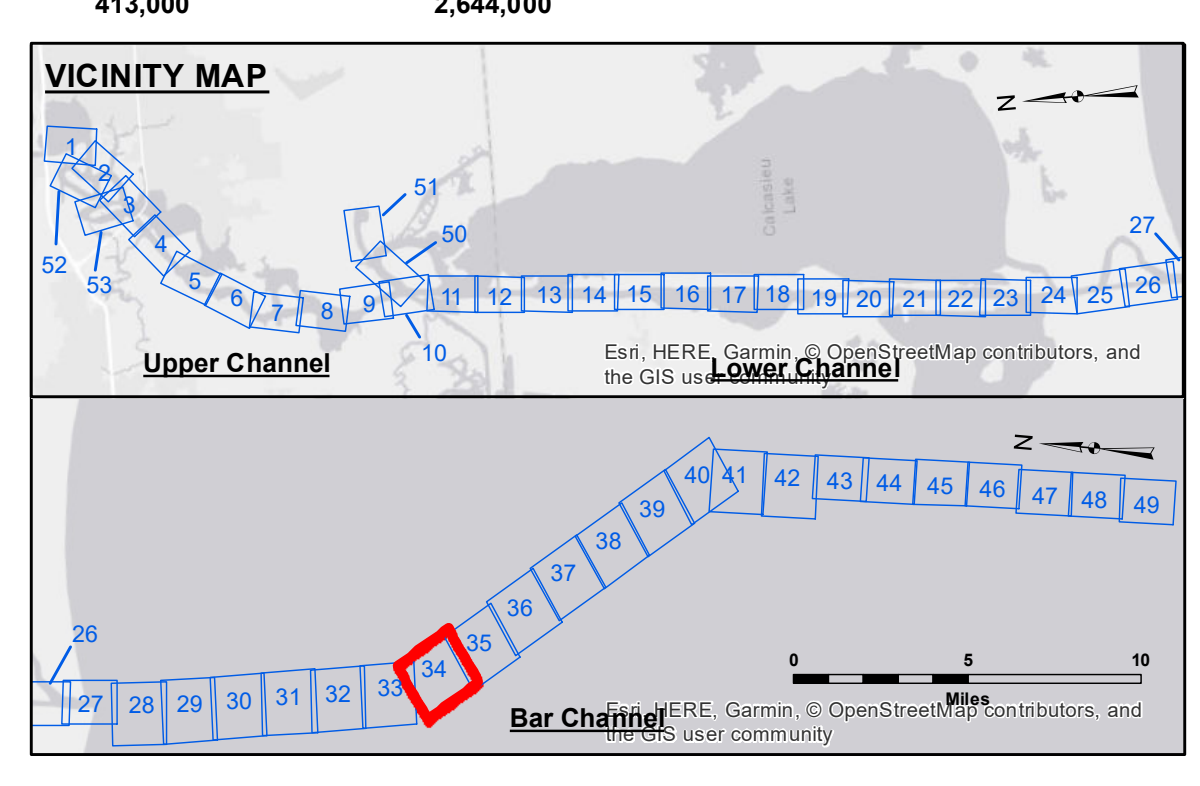


LC CURVE DATA
 $\Delta = 30^\circ 13'$
 $D = 1' 00''$
 $T = 1546.85'$
 $L = 3021.67'$
 $R = 5729.58'$



LEGEND	
--- Federal Navigation Channel	● Cable Area
— Federal Navigation Center Line	□ Placement Area
— As-built Pipeline/Cable	□ Anchorage Area
--- Unconfirmed Pipeline/Cable	⊠ Obstruction Point
— Project Depth Contour	⚓ Wrecks-Submerged
3 Fluff Thickness (feet)*	● Shoalest Sounding**
★ Beacon, General	★ Red Navigation Buoy
◆ Green Navigation Buoy	

Gage Reading: CAMERON: 0.33 MLLW
 Sea Conditions: 1-2'
 Vessel Name: M/V TECHE
 Survey Type: CONDITION
 Sounding Frequency***: LOW

Vertical Datum:
 North American Datum of 1983 (NAD83), projected to the State Plane Coordinate System (SPCS), Louisiana South Zone. Distance units in U.S. Survey Feet.

Horizontal Coordinate System:
 North American Datum of 1983 (NAD83), projected to the State Plane Coordinate System (SPCS), Louisiana South Zone. Distance units in U.S. Survey Feet.

Vertical Datum:
 Soundings are shown in feet and indicate depths below Mean Lower Low Water Datum (MLLW). Datum Relationships for page 73650 as of December 2013:
 0.0' NAVD88 (2009.55) = 1.3' MLLW = 2.3' MLG or 0.0' MLLW = 1.0' MLG

Distances on the Calcasieu River are shown at 1 mile intervals.
 The location of navigation aids are based on and provided by the U.S. Coast Guard and USACE survey crews.
 2015 Aerial Photography data source: NAIP
 Reference is N.O.A. Navigation Chart No. 11339.
 * Difference between high and low frequency elevations where greater than 1.0'.
 ** Shoalest Sounding per Quarter per Reach.
 *** High frequency (200 kHz) survey data represents the first signal return at a sounding location and will include suspended solids, known as "fluff", if present. Low frequency (20 kHz) survey data normally penetrates through this "fluff" layer to depict elevations of consolidated bottom material. Low frequency accuracies may vary depending on channel conditions and fathometer settings.

US Army Corps of Engineers
 District: CEMVN

U.S. ARMY CORPS OF ENGINEERS
 NEW ORLEANS DISTRICT

Surveyed By: SR, JH
 Plotted By: BD
 Checked By: AO

CALCASIEU SHIP CHANNEL
BAR SHEET 34
CR_34_BARX_20171108_CS
08 November 2017

Sheet Reference Number
34 of 53

Revision Number:
 1:2-2016011

DISCLAIMER
 The United States Government makes no warranty, express or implied, regarding the accuracy, reliability, or completeness of the information contained herein. The user assumes all liability for any use of the information contained herein. The user agrees to hold the United States Government harmless from any claims, damages, or expenses, including reasonable attorneys' fees, that may be incurred by the user as a result of its use of the information contained herein. The user agrees to indemnify and hold the United States Government harmless from any claims, damages, or expenses, including reasonable attorneys' fees, that may be incurred by the user as a result of its use of the information contained herein.