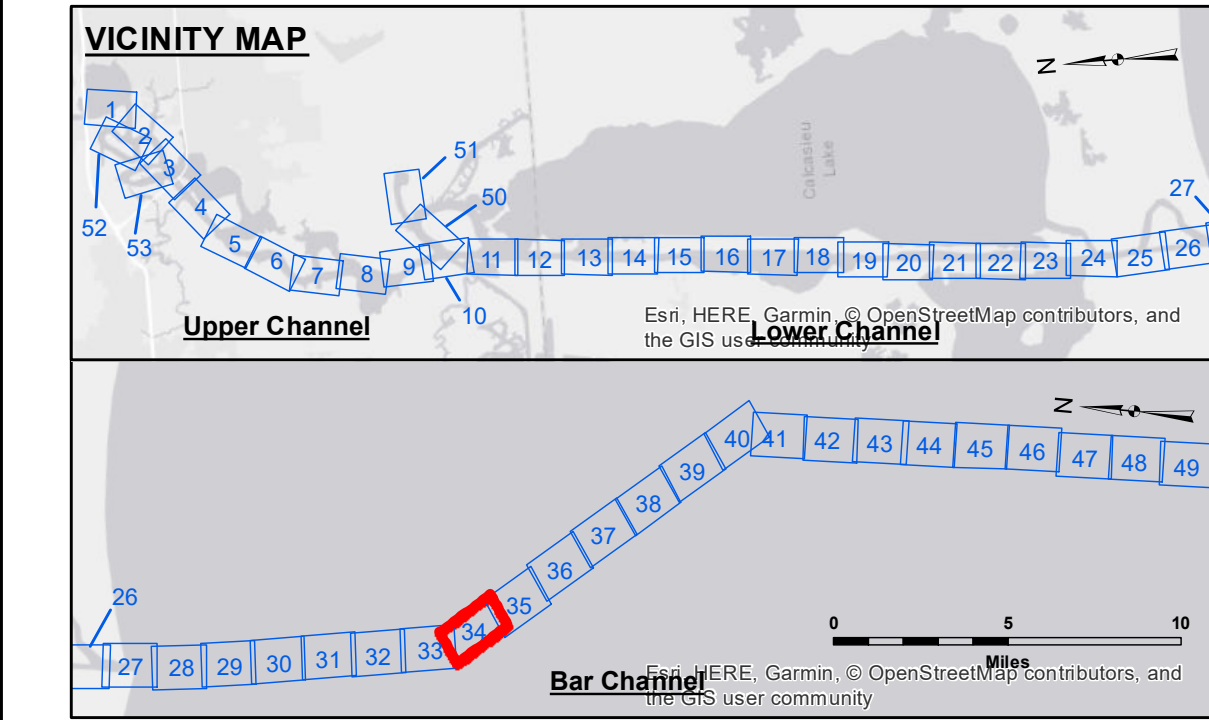


LC CURVE DATA
 $\Delta = 30^\circ 13'$
 $D = 1^\circ 00'$
 $T = 1546.85'$
 $L = 3021.67'$
 $R = 5729.58'$

- STATIONING DATA:**
 STA. 488+00.00 AZ 231°37'16.8
 STA. 489+00.00 AZ 231°37'16.8
 STA. 490+00.00 AZ 231°37'16.8
 STA. 491+00.00 AZ 231°37'16.8
 STA. 492+00.00 AZ 231°37'16.8
 STA. 493+00.00 AZ 231°37'16.8
 STA. 494+00.00 AZ 231°37'16.8
 STA. 495+00.00 AZ 231°37'16.8
 STA. 496+00.00 AZ 231°37'16.8
 STA. 497+00.00 AZ 231°37'16.8
 STA. 498+00.00 AZ 231°37'16.8
 STA. 499+00.00 AZ 231°37'16.8
 STA. 500+00.00 AZ 231°37'16.8
 STA. 501+00.00 AZ 231°37'16.8
 STA. 502+00.00 AZ 231°37'16.8
 STA. 503+00.00 AZ 231°37'16.8
 STA. 504+00.00 AZ 231°37'16.8
 STA. 505+00.00 AZ 231°37'16.8
 STA. 506+00.00 AZ 231°37'16.8
 STA. 507+00.00 AZ 231°37'16.8
 STA. 508+00.00 AZ 231°37'16.8
 STA. 509+00.00 AZ 231°37'16.8
 STA. 510+00.00 AZ 231°37'16.8
 STA. 511+00.00 AZ 231°37'16.8
 STA. 512+00.00 AZ 231°37'16.8
 STA. 513+00.00 AZ 231°37'16.8
 STA. 514+00.00 AZ 231°37'16.8
 STA. 515+00.00 AZ 231°37'16.8
 STA. 516+00.00 AZ 231°37'16.8
 STA. 517+00.00 AZ 231°37'16.8
 STA. 518+00.00 AZ 231°37'16.8
 STA. 519+00.00 AZ 231°37'16.8
 STA. 520+00.00 AZ 231°37'16.8
 STA. 521+00.00 AZ 231°37'16.8
 STA. 522+00.00 AZ 231°37'16.8
 STA. 523+00.00 AZ 231°37'16.8
 STA. 524+00.00 AZ 231°37'16.8
 STA. 525+00.00 AZ 231°37'16.8
 STA. 526+00.00 AZ 231°37'16.8
 STA. 527+00.00 AZ 231°37'16.8
 STA. 528+00.00 AZ 231°37'16.8
 STA. 529+00.00 AZ 231°37'16.8
 STA. 530+00.00 AZ 231°37'16.8
 STA. 531+00.00 AZ 231°37'16.8
 STA. 532+00.00 AZ 231°37'16.8
 STA. 533+00.00 AZ 231°37'16.8
 STA. 534+00.00 AZ 231°37'16.8
 STA. 535+00.00 AZ 231°37'16.8
 STA. 536+00.00 AZ 231°37'16.8
 STA. 537+00.00 AZ 231°37'16.8
 STA. 538+00.00 AZ 231°37'16.8
 STA. 539+00.00 AZ 231°37'16.8
 STA. 540+00.00 AZ 231°37'16.8
 STA. 541+00.00 AZ 231°37'16.8
 STA. 542+00.00 AZ 231°37'16.8
 STA. 543+00.00 AZ 231°37'16.8
 STA. 544+00.00 AZ 231°37'16.8
 STA. 545+00.00 AZ 231°37'16.8
 STA. 546+00.00 AZ 231°37'16.8
 STA. 547+00.00 AZ 231°37'16.8
 STA. 548+00.00 AZ 231°37'16.8
 STA. 549+00.00 AZ 231°37'16.8
 STA. 550+00.00 AZ 231°37'16.8
 STA. 551+00.00 AZ 231°37'16.8
 STA. 552+00.00 AZ 231°37'16.8
 STA. 553+00.00 AZ 231°37'16.8
 STA. 554+00.00 AZ 231°37'16.8
 STA. 555+00.00 AZ 231°37'16.8
 STA. 556+00.00 AZ 231°37'16.8
 STA. 557+00.00 AZ 231°37'16.8
 STA. 558+00.00 AZ 231°37'16.8
 STA. 559+00.00 AZ 231°37'16.8
 STA. 560+00.00 AZ 231°37'16.8
 STA. 561+00.00 AZ 231°37'16.8
 STA. 562+00.00 AZ 231°37'16.8
 STA. 563+00.00 AZ 231°37'16.8
 STA. 564+00.00 AZ 231°37'16.8
 STA. 565+00.00 AZ 231°37'16.8
 STA. 566+00.00 AZ 231°37'16.8
 STA. 567+00.00 AZ 231°37'16.8
 STA. 568+00.00 AZ 231°37'16.8
 STA. 569+00.00 AZ 231°37'16.8
 STA. 570+00.00 AZ 231°37'16.8
 STA. 571+00.00 AZ 231°37'16.8
 STA. 572+00.00 AZ 231°37'16.8
 STA. 573+00.00 AZ 231°37'16.8
 STA. 574+00.00 AZ 231°37'16.8
 STA. 575+00.00 AZ 231°37'16.8
 STA. 576+00.00 AZ 231°37'16.8
 STA. 577+00.00 AZ 231°37'16.8
 STA. 578+00.00 AZ 231°37'16.8
 STA. 579+00.00 AZ 231°37'16.8
 STA. 580+00.00 AZ 231°37'16.8
 STA. 581+00.00 AZ 231°37'16.8
 STA. 582+00.00 AZ 231°37'16.8
 STA. 583+00.00 AZ 231°37'16.8
 STA. 584+00.00 AZ 231°37'16.8
 STA. 585+00.00 AZ 231°37'16.8
 STA. 586+00.00 AZ 231°37'16.8
 STA. 587+00.00 AZ 231°37'16.8
 STA. 588+00.00 AZ 231°37'16.8
 STA. 589+00.00 AZ 231°37'16.8
 STA. 590+00.00 AZ 231°37'16.8
 STA. 591+00.00 AZ 231°37'16.8
 STA. 592+00.00 AZ 231°37'16.8
 STA. 593+00.00 AZ 231°37'16.8
 STA. 594+00.00 AZ 231°37'16.8
 STA. 595+00.00 AZ 231°37'16.8
 STA. 596+00.00 AZ 231°37'16.8
 STA. 597+00.00 AZ 231°37'16.8
 STA. 598+00.00 AZ 231°37'16.8
 STA. 599+00.00 AZ 231°37'16.8
 STA. 600+00.00 AZ 231°37'16.8
 STA. 601+00.00 AZ 231°37'16.8
 STA. 602+00.00 AZ 231°37'16.8
 STA. 603+00.00 AZ 231°37'16.8
 STA. 604+00.00 AZ 231°37'16.8
 STA. 605+00.00 AZ 231°37'16.8
 STA. 606+00.00 AZ 231°37'16.8
 STA. 607+00.00 AZ 231°37'16.8
 STA. 608+00.00 AZ 231°37'16.8
 STA. 609+00.00 AZ 231°37'16.8
 STA. 610+00.00 AZ 231°37'16.8
 STA. 611+00.00 AZ 231°37'16.8
 STA. 612+00.00 AZ 231°37'16.8
 STA. 613+00.00 AZ 231°37'16.8
 STA. 614+00.00 AZ 231°37'16.8
 STA. 615+00.00 AZ 231°37'16.8
 STA. 616+00.00 AZ 231°37'16.8
 STA. 617+00.00 AZ 231°37'16.8
 STA. 618+00.00 AZ 231°37'16.8
 STA. 619+00.00 AZ 231°37'16.8
 STA. 620+00.00 AZ 231°37'16.8
 STA. 621+00.00 AZ 231°37'16.8
 STA. 622+00.00 AZ 231°37'16.8
 STA. 623+00.00 AZ 231°37'16.8
 STA. 624+00.00 AZ 231°37'16.8
 STA. 625+00.00 AZ 231°37'16.8
 STA. 626+00.00 AZ 231°37'16.8
 STA. 627+00.00 AZ 231°37'16.8
 STA. 628+00.00 AZ 231°37'16.8
 STA. 629+00.00 AZ 231°37'16.8
 STA. 630+00.00 AZ 231°37'16.8
 STA. 631+00.00 AZ 231°37'16.8
 STA. 632+00.00 AZ 231°37'16.8
 STA. 633+00.00 AZ 231°37'16.8
 STA. 634+00.00 AZ 231°37'16.8
 STA. 635+00.00 AZ 231°37'16.8
 STA. 636+00.00 AZ 231°37'16.8
 STA. 637+00.00 AZ 231°37'16.8
 STA. 638+00.00 AZ 231°37'16.8
 STA. 639+00.00 AZ 231°37'16.8
 STA. 640+00.00 AZ 231°37'16.8
 STA. 641+00.00 AZ 231°37'16.8
 STA. 642+00.00 AZ 231°37'16.8
 STA. 643+00.00 AZ 231°37'16.8
 STA. 644+00.00 AZ 231°37'16.8
 STA. 645+00.00 AZ 231°37'16.8
 STA. 646+00.00 AZ 231°37'16.8
 STA. 647+00.00 AZ 231°37'16.8
 STA. 648+00.00 AZ 231°37'16.8
 STA. 649+00.00 AZ 231°37'16.8
 STA. 650+00.00 AZ 231°37'16.8
 STA. 651+00.00 AZ 231°37'16.8
 STA. 652+00.00 AZ 231°37'16.8
 STA. 653+00.00 AZ 231°37'16.8
 STA. 654+00.00 AZ 231°37'16.8
 STA. 655+00.00 AZ 231°37'16.8
 STA. 656+00.00 AZ 231°37'16.8
 STA. 657+00.00 AZ 231°37'16.8
 STA. 658+00.00 AZ 231°37'16.8
 STA. 659+00.00 AZ 231°37'16.8
 STA. 660+00.00 AZ 231°37'16.8
 STA. 661+00.00 AZ 231°37'16.8
 STA. 662+00.00 AZ 231°37'16.8
 STA. 663+00.00 AZ 231°37'16.8
 STA. 664+00.00 AZ 231°37'16.8
 STA. 665+00.00 AZ 231°37'16.8
 STA. 666+00.00 AZ 231°37'16.8
 STA. 667+00.00 AZ 231°37'16.8
 STA. 668+00.00 AZ 231°37'16.8
 STA. 669+00.00 AZ 231°37'16.8
 STA. 670+00.00 AZ 231°37'16.8
 STA. 671+00.00 AZ 231°37'16.8
 STA. 672+00.00 AZ 231°37'16.8
 STA. 673+00.00 AZ 231°37'16.8
 STA. 674+00.00 AZ 231°37'16.8
 STA. 675+00.00 AZ 231°37'16.8
 STA. 676+00.00 AZ 231°37'16.8
 STA. 677+00.00 AZ 231°37'16.8
 STA. 678+00.00 AZ 231°37'16.8
 STA. 679+00.00 AZ 231°37'16.8
 STA. 680+00.00 AZ 231°37'16.8
 STA. 681+00.00 AZ 231°37'16.8
 STA. 682+00.00 AZ 231°37'16.8
 STA. 683+00.00 AZ 231°37'16.8
 STA. 684+00.00 AZ 231°37'16.8
 STA. 685+00.00 AZ 231°37'16.8
 STA. 686+00.00 AZ 231°37'16.8
 STA. 687+00.00 AZ 231°37'16.8
 STA. 688+00.00 AZ 231°37'16.8
 STA. 689+00.00 AZ 231°37'16.8
 STA. 690+00.00 AZ 231°37'16.8
 STA. 691+00.00 AZ 231°37'16.8
 STA. 692+00.00 AZ 231°37'16.8
 STA. 693+00.00 AZ 231°37'16.8
 STA. 694+00.00 AZ 231°37'16.8
 STA. 695+00.00 AZ 231°37'16.8
 STA. 696+00.00 AZ 231°37'16.8
 STA. 697+00.00 AZ 231°37'16.8
 STA. 698+00.00 AZ 231°37'16.8
 STA. 699+00.00 AZ 231°37'16.8
 STA. 700+00.00 AZ 231°37'16.8



LEGEND

Federal Navigation Channel	Cable Area	Fluff Thickness (feet)*	-16' and above
Federal Navigation Center Line	Placement Area	Shoalest Sounding**	-16' to -21'
As-built Pipeline/Cable	Anchorage Area	Beacon, General	-21' to -26'
Unconfirmed Pipeline/Cable	Obstruction Point	Red Navigation Buoy	-26' to -33'
Project Depth Contour	Wrecks-Submerged	Green Navigation Buoy	-33' to -39'
			-39' to -41'
			-41' to -43'
			-43' and below

Gage Reading: CAMERON: 1.7 MLLW
 Sea Conditions: CALM
 Vessel Name: lafourche
 Survey Type: CONDITION
 Sounding Frequency***: LOW

NOTES:
 Horizontal Coordinate System:
 North American Datum of 1983 (NAD83), projected to the State Plane
 Coordinate System (SPCS), Louisiana South Zone. Distance units in U.S. Survey Feet.
 Vertical Datum:
 Soundings are shown in feet and indicate depths below Mean Lower Low Water Datum (MLLW).
 Datum Relationships for gage 73650 as of December 2013:
 0.0' NAVD88 (2009.55) = 1.3' MLLW = 2.3' MLG or 0.0' MLLW = 1.0' MLG
 Distances on the Calcasieu River are shown at 1 mile intervals.
 The location of navigation aids are based on and provided by the U.S. Coast Guard
 and USACE survey crews.
 2015 Aerial Photography data source: NAIP
 Reference is N.O.A.A. Navigation Chart No. 11339.
 * Difference between high and low frequency elevations where greater than 1.0'.
 ** Shoalest Sounding per Quarter per Reach.
 *** High frequency (200 kHz) survey data represents the first signal return at a sounding
 location and will include suspended solids, known as "fluff", if present. Low frequency (20 kHz)
 survey data normally penetrates through this "fluff" layer to depict elevations of consolidated bottom
 material. Low frequency accuracies may vary depending on channel conditions and fathometer
 settings.



DISCLAIMER
 The United States Government furnishes these data and the recipient accepts and uses them with the express understanding that the United States Government makes no warranty, expressed or implied, concerning the accuracy, completeness, reliability, usability or suitability for any particular purpose of the data. The user is responsible for the results of any application of the data for other than its intended purpose. The user shall be liable for any damage or injury, under no liability whatsoever to any person by reason of any use made of this data, including its use in the design of any project. These data, including the Coastal Hydrographic Survey Data, are provided to the recipient under the license and conditions set forth in the Government provided data. The recipient may not transfer these data to others without also transferring this Disclaimer. The information depicted on the map represents the results of a hydrographic survey conducted under the authority of the Corps of Engineers and is not intended to represent the general condition existing at that time.

U.S. ARMY CORPS OF ENGINEERS NEW ORLEANS DISTRICT		
Submitted:	Surveyed By: PS, JH	Plotted By: AO
Recommended:	Chief, Survey Section	Checked By: AC
Approved:	Chief, Waterways Maintenance Section	

CALCASIEU SHIP CHANNEL
BAR SHEET 34
CR_34_BAR_20180424_BD
24 April 2018

Sheet Reference Number
34 of 53