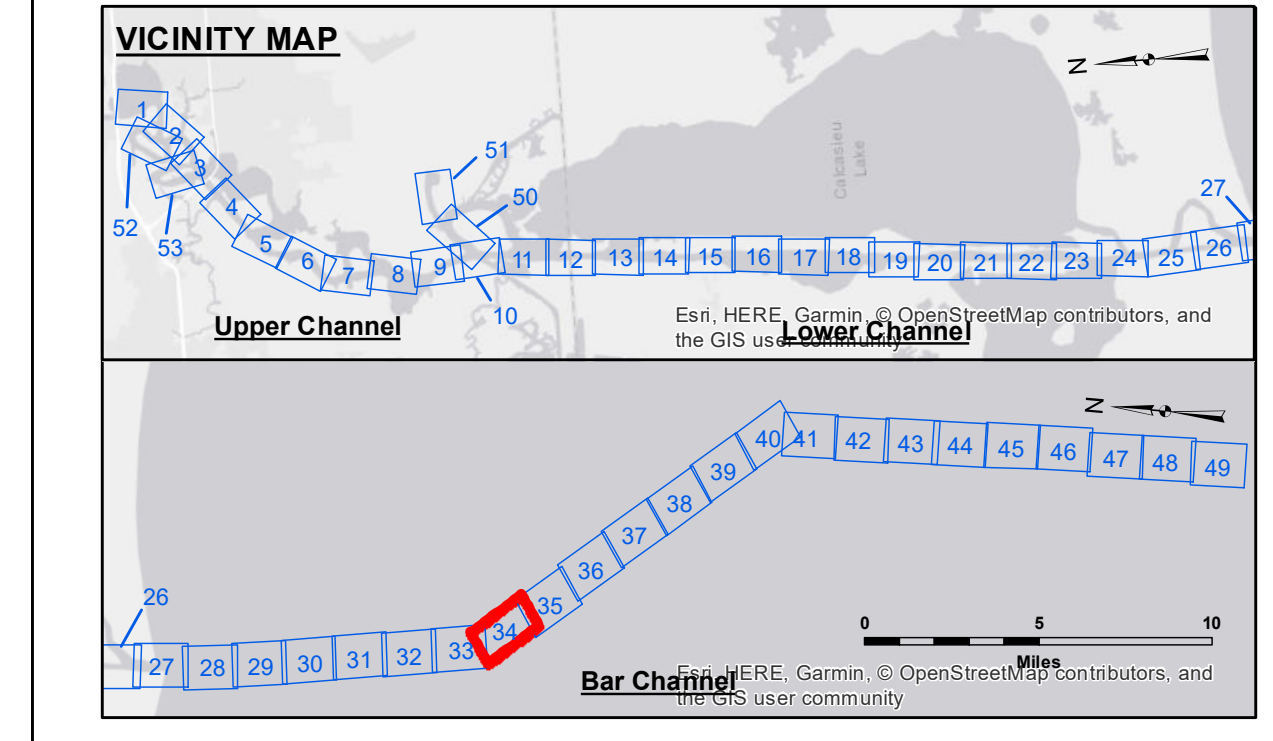


LC CURVE DATA
 $\Delta = 30^\circ 13'$
 $D = 1^\circ 00'$
 $T = 1546.85'$
 $L = 3021.67'$
 $R = 5729.58'$

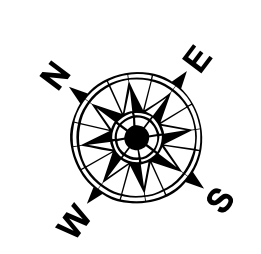
GULF OF MEXICO

**SITE NO. 2
DISPOSAL AREA**

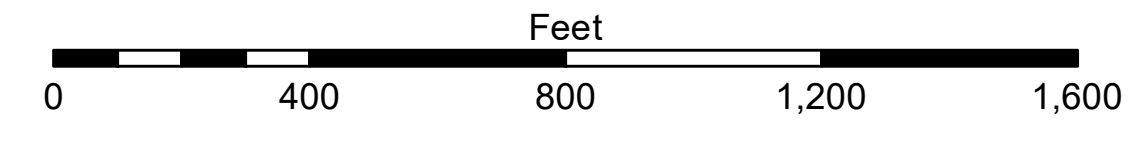
CALCASIEU SHIP CHANNEL



LEGEND	
--- Federal Navigation Channel	○ Cable Area
— Federal Navigation Center Line	□ Placement Area
— As-built Pipeline/Cable	⊗ Anchorage Area
..... Unconfirmed Pipeline/Cable	⊗ Obstruction Point
— Project Depth Contour	⊗ Wrecks-Submerged
3 Fluff Thickness (feet)*	★ Beacon, General
● Shoalest Sounding**	◆ Red Navigation Buoy
◆ Green Navigation Buoy	



Gage Reading: CAMERON: 2.91 MLLW AVG.
 Sea Conditions: 2'-4"
 Vessel Name: M/V VALENTOUR
 Survey Type: CONDITION
 Sounding Frequency***: LOW



NOTES:
 Horizontal Coordinate System: North American Datum of 1983 (NAD83), projected to the State Plane Coordinate System (SPCS), Louisiana South Zone. Distance units in U.S. Survey Feet.
 Vertical Datum: Soundings are shown in feet and indicate depths below Mean Lower Low Water Datum (MLLW). Datum Relationships for gage 73650 as of December 2013: 0.0' NAVD88 (2009.55) = 1.3' MLLW = 2.3' MLG or 0.0' MLLW = 1.0' MLG
 Distances on the Calcasieu River are shown at 1 mile intervals.
 The location of navigation aids are base on and provided by the U.S. Coast Guard and USACE survey crews.
 2015 Aerial Photography data source: NAIP
 Reference is N.O.A.A. Navigation Chart No. 11339.
 * Difference between high and low frequency elevations where greater than 1.0'.
 ** Shoalest Sounding per Quarter per Reach.
 *** High frequency (200 kHz) survey data represents the first signal return at a sounding location and will include suspended solids, known as "fluff", if present. Low frequency (20 kHz) survey data normally penetrates through this "fluff" layer to depict elevations of consolidated bottom material. Low frequency accuracies may vary depending on channel conditions and fathometer settings.



DISCLAIMER:
 The information depicted on this map represents the results of a hydrographic survey conducted by the U.S. Army Corps of Engineers. The user is responsible for the accuracy, completeness, and reliability of the data for its intended use. The user is responsible for the accuracy, completeness, and reliability of the data for its intended use. The user is responsible for the accuracy, completeness, and reliability of the data for its intended use. The user is responsible for the accuracy, completeness, and reliability of the data for its intended use.

Submitted:	Surveyed By: JDH/LJA
Recommended:	Plotted By: BD
Checked By: AC	Checked By: AC

**CALCASIEU SHIP CHANNEL
 BAR SHEET 34
 CR_34_BAR_20190717_CS_POSTSTORM
 17 July 2019**

**Sheet Reference Number
 34 of 53**