

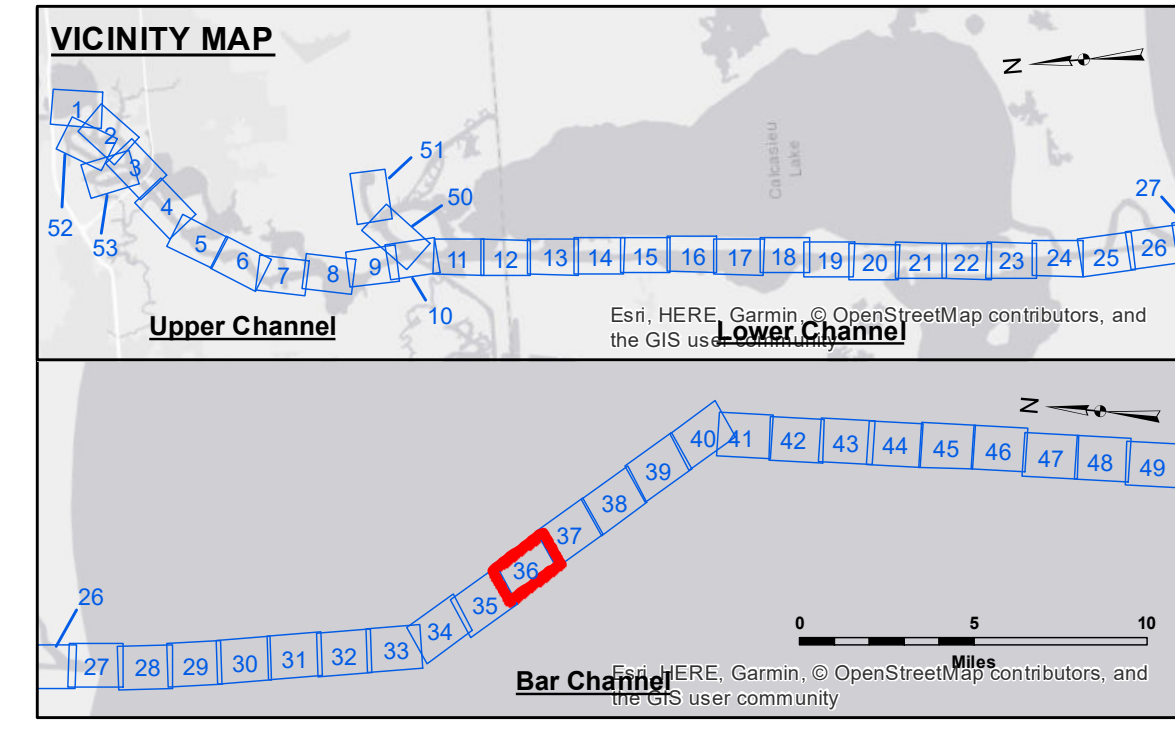
Accession: The United States Government furnishes these data and the recipient accepts and uses them with the express understanding that the data are not to be used for any purpose other than that for which they were originally prepared, or applied to any other project, or for any other purpose of the recipient. The user is responsible for the results of any use of the data. The user is not to be held liable for any damage or injury resulting from the use of the data. The user is not to be held liable for any damage or injury resulting from the use of the data. The user is not to be held liable for any damage or injury resulting from the use of the data.

Submitted:	Surveyed By:	RYLAND/DAMS
Recommended:	Plotted By:	BD
Approved:	Checked By:	AC

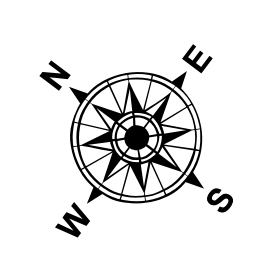
CALCASIEU SHIP CHANNEL
BAR SHEET 36
CR_36_BAR_20190601_CS
01 June 2019

Sheet Reference Number
36 of 53

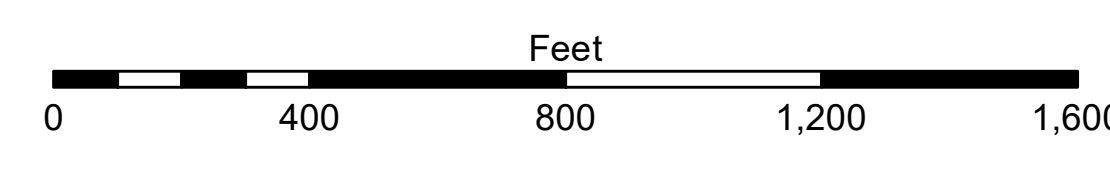
Revision Number:
 3.13-20160811



LEGEND	
--- Federal Navigation Channel	● Cable Area
— Federal Navigation Center Line	□ Placement Area
— As-built Pipeline/Cable	□ Anchorage Area
..... Unconfirmed Pipeline/Cable	⊗ Obstruction Point
— Project Depth Contour	⚓ Wrecks-Submerged
3 Fluff Thickness (feet)*	★ Beacon, General
● Shoalest Sounding**	◆ Red Navigation Buoy
● -16' and above	◆ Green Navigation Buoy
● -16' to -21'	
● -21' to -26'	
● -26' to -33'	
● -33' to -39'	
● -39' to -41'	
● -41' to -43'	
● -43' and below	



Gage Reading: CAMERON: 1.68 MLLW AVG.
 Sea Conditions: CALM
 Vessel Name: M/V VALENTOUR
 Survey Type: CONDITION
 Sounding Frequency***: LOW



NOTES:
 Horizontal Coordinate System: North American Datum of 1983 (NAD83), projected to the State Plane Coordinate System (SPCS), Louisiana South Zone. Distance units in U.S. Survey Feet.
 Vertical Datum: Soundings are shown in feet and indicate depths below Mean Lower Low Water Datum (MLLW). Datum Relationships for gage 73650 as of December 2013: 0.0' NAVD83 (2009.55) = 1.3' MLLW = 2.3' MLG or 0.0' MLLW = 1.0' MLG
 Distances on the Calcasieu River are shown at 1 mile intervals.
 The location of navigation aids are based on and provided by the U.S. Coast Guard and USACE survey crews.
 2015 Aerial Photography data source: NAIP
 Reference is N.O.A.A. Navigation Chart No. 11339.
 * Difference between high and low frequency elevations where greater than 1.0'.
 ** Shoalest Sounding per Quarter per Reach.
 *** High frequency (200 kHz) survey data represents the first signal return at a sounding location and will include suspended solids, known as "fluff", if present. Low frequency (20 kHz) survey data normally penetrates through this "fluff" layer to depict elevations of consolidated bottom material. Low frequency accuracies may vary depending on channel conditions and fathometer settings.