

**DISCLAIMER:** The United States Government furnishes this data for the use of the user in accordance with the terms of the license. The user assumes all liability for any use of the data, including but not limited to, the use of the data for navigation purposes. The user is responsible for the accuracy, reliability, and safety of the data. The user is not to be held liable for any damage or injury resulting from the use of the data. The user is not to be held liable for any damage or injury resulting from the use of the data. The user is not to be held liable for any damage or injury resulting from the use of the data.

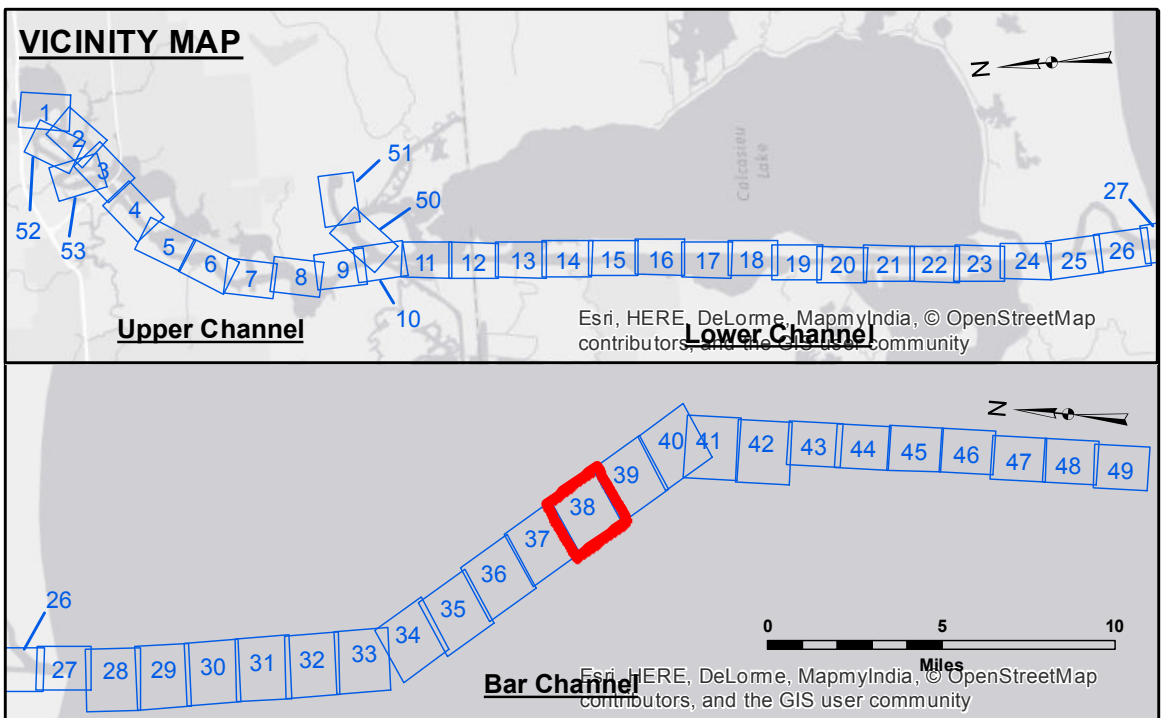
Submitted:	SR, JH
Recommended:	BD
Checked:	AO

U.S. ARMY CORPS OF ENGINEERS  
NEW ORLEANS DISTRICT

**CALCASIEU SHIP CHANNEL**  
**BAR SHEET 38**  
**CR\_38\_BAFX\_20170619\_CS**  
**19 June 2017**

**Sheet Reference Number**  
**38 of 53**

Revision Number:  
313-2016011



LEGEND	
--- Federal Navigation Channel	● Cable Area
— Federal Navigation Center Line	□ Placement Area
— As-built Pipeline/Cable	⊠ Anchorage Area
--- Unconfirmed Pipeline/Cable	⊠ Obstruction Point
— Project Depth Contour	⚓ Wrecks-Submerged
3 Fluff Thickness (feet)*	★ Beacon, General
● Shoalest Sounding**	★ Red Navigation Buoy
● -15' and above	◆ Green Navigation Buoy
● -15' to -20'	
● -20' to -25'	
● -25' to -32'	
● -32' to -38'	
● -38' to -40'	
● -40' to -42'	
● -42' and below	

Compass rose showing North (N), South (S), East (E), and West (W).

Gage Reading: CAMERON: 3.45 MLG  
 1-3'  
 Vessel Name: MV TECHE  
 Survey Type: AD  
 Sounding Frequency\*\*\*: LOW

Scale bar: 0, 400, 800, 1,200, 1,600 Feet

**NOTES:**  
 Horizontal Coordinate System:  
 North American Datum of 1983 (NAD83), projected to the State Plane Coordinate System (SPCS), Louisiana South Zone. Distance units in U.S. Survey Feet.  
 Vertical Datum:  
 Soundings are shown in feet and indicate depths below Mean Low Water (MLW).  
 Datum Relationships for page 73650 as of December 2013:  
 0.0' NAVD88 (2009.55) = 1.3' MLLW = 2.3' MLG or 0.0' MLLW = 1.0' MLG  
 Distances on the Calcasieu River are shown at 1 mile intervals.  
 The location of navigation aids are based on and provided by the U.S. Coast Guard and USACE survey crews.  
 2015 Aerial Photography data source: NAIP  
 Reference is N.O.A. Navigation Chart No. 11339.  
 \* Difference between high and low frequency elevations where greater than 1.0'.  
 \*\* Shoalest Sounding per Quarter per Reach.  
 \*\*\* High frequency (200 kHz) survey data represents the first signal return at a sounding location and will include suspended solids, known as "fluff", if present. Low frequency (20 kHz) survey data normally penetrates through this "fluff" layer to depict elevations of consolidated bottom material. Low frequency accuracies may vary depending on channel conditions and fathometer settings.