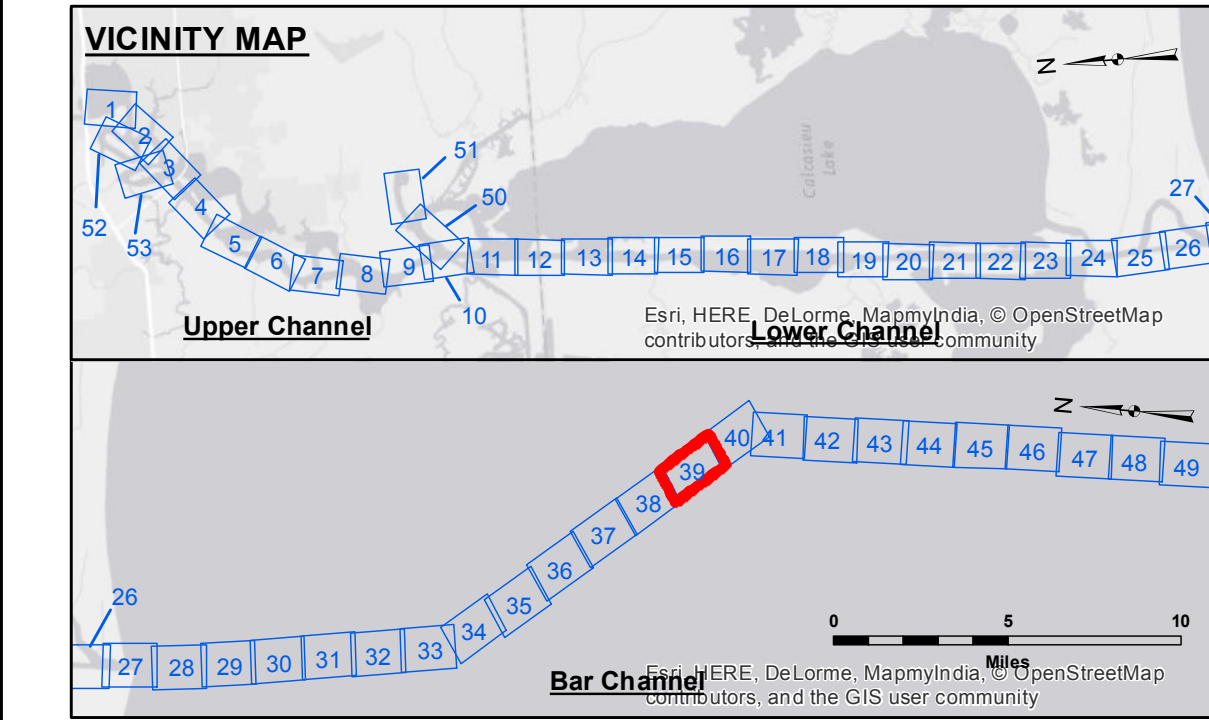
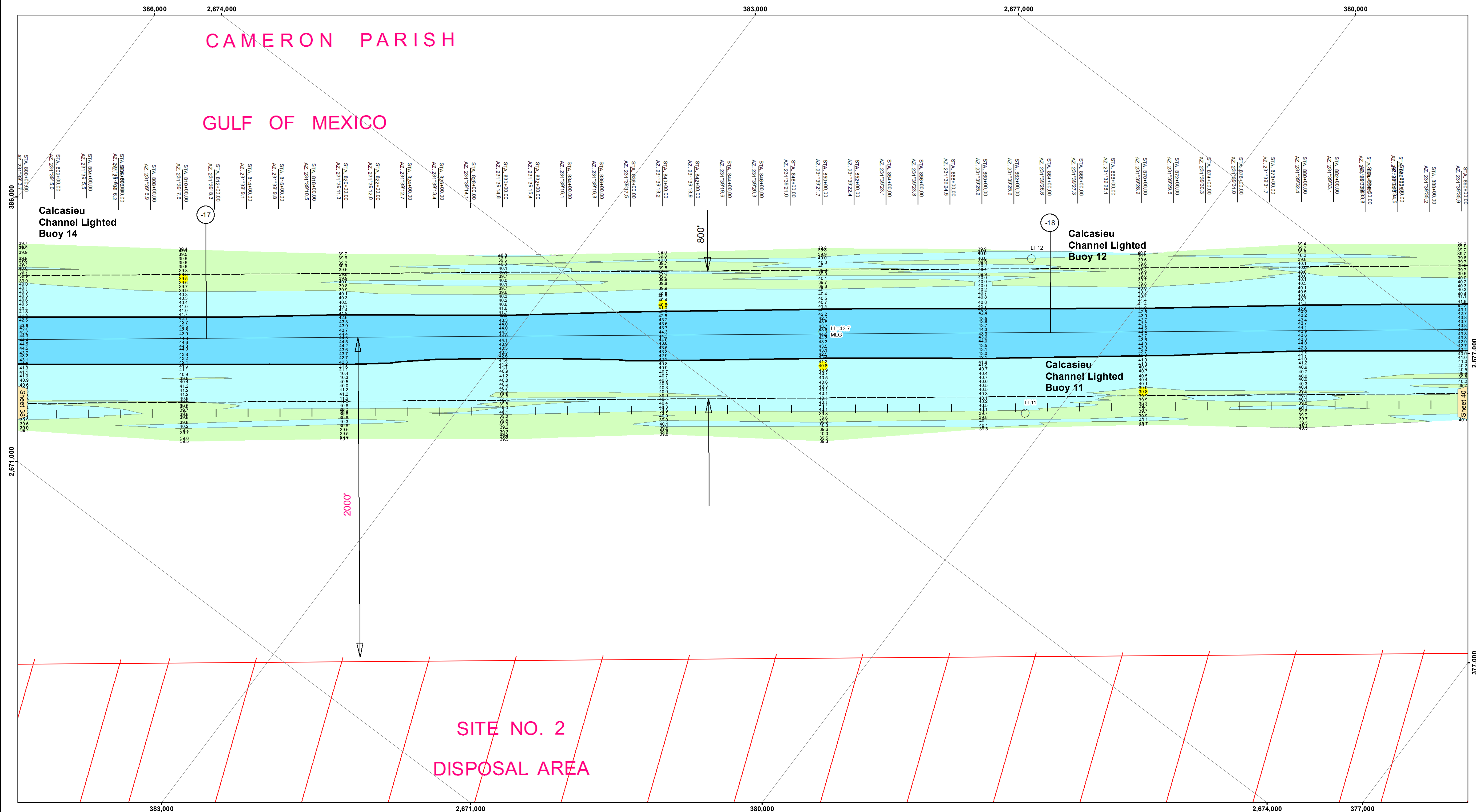


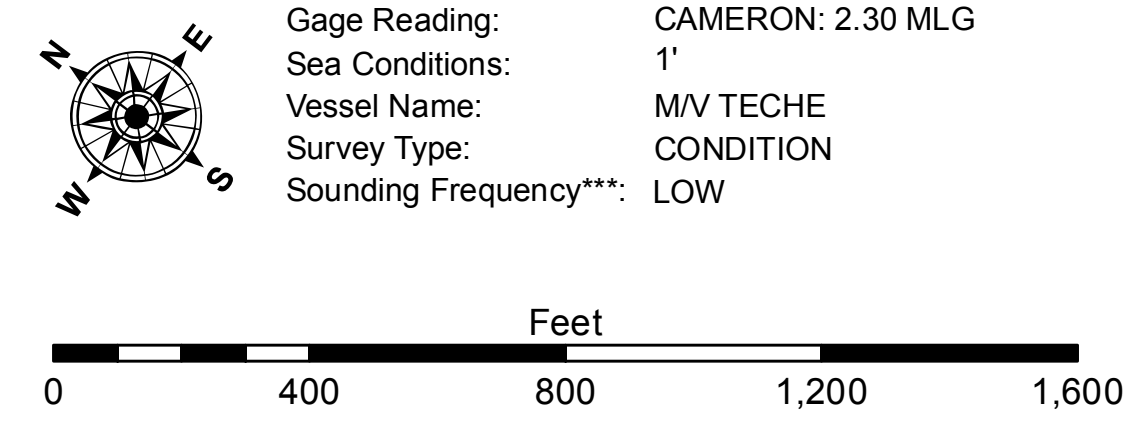
CAMERON PARISH

GULF OF MEXICO

SITE NO. 2 DISPOSAL AREA



LEGEND			
	Federal Navigation Channel		Placement Area
	Federal Navigation Center Line		Borrow Area
	As-built Pipeline/Cable		Shoalest Sounding**
	Unconfirmed Pipeline/Cable		Beacon, General
	Project Depth Contour		Red Navigation Buoy
	Anchorage Area		Green Navigation Buoy
	Obstruction Point		
	Wrecks-Submerged		
			-15' and above
			-15' to -20'
			-20' to -25'
			-25' to -32'
			-32' to -38'
			-38' to -40'
			-40' to -42'
			-42' and below



**NOTES:**

Horizontal Coordinate System: North American Datum of 1983 (NAD83), projected to the State Plane Coordinate System (SPCS), Louisiana South Zone. Distance units in U.S. Survey Feet.

Vertical Datum: Soundings are shown in feet and indicate depths below Mean Low Gulf Datum (MLG). Datum Relationships for gage 73650 as of December 2013: 0.0' NAVD83 (2009.55) = 1.3' MLLW = 2.3' MLG or 0.0' MLLW = 1.0' MLG

Distances on the Calcasieu River are shown at 1 mile intervals.

The location of navigation aids are base on and provided by the U.S. Coast Guard and USACE survey crews.

2010 Aerial Photography data source: NAIP

Reference is N.O.A.A. Navigation Chart No. 11339.

\*\* Shoalest Sounding per Quarter per Reach.

\*\*\* High frequency (200 kHz) survey data represents the first signal return at a sounding location and will include suspended solids, known as "fluff", if present. Low frequency (20 kHz) survey data normally penetrates through this "fluff" layer to depict elevations of consolidated bottom material. Low frequency accuracies may vary depending on channel conditions and fathometer settings.



**Access/Use:** The United States Government furnishes these data and the recipient accepts and uses them with the express understanding that the data are not to be used for purposes other than those specified in the contract. The user is responsible for the accuracy, completeness, reliability, usability or suitability for any particular purpose of the information received. The user is responsible for the accuracy, completeness, reliability, usability or suitability for any particular purpose of the information received. The user is responsible for the accuracy, completeness, reliability, usability or suitability for any particular purpose of the information received. The user is responsible for the accuracy, completeness, reliability, usability or suitability for any particular purpose of the information received.

Submitted:	Surveyed By:	Plotted By:	Checked By:
	SJR_wjdh	BTD	TAF
Recommended:	Chief, Survey Section		
Approved:	Chief, Waterways Maintenance Section		

**CALCASIEU SHIP CHANNEL**  
**BAR SHEET 39**  
**CR\_39\_BAR\_20160405**  
**05 April 2016**

**Sheet Reference Number**  
**39 of 53**