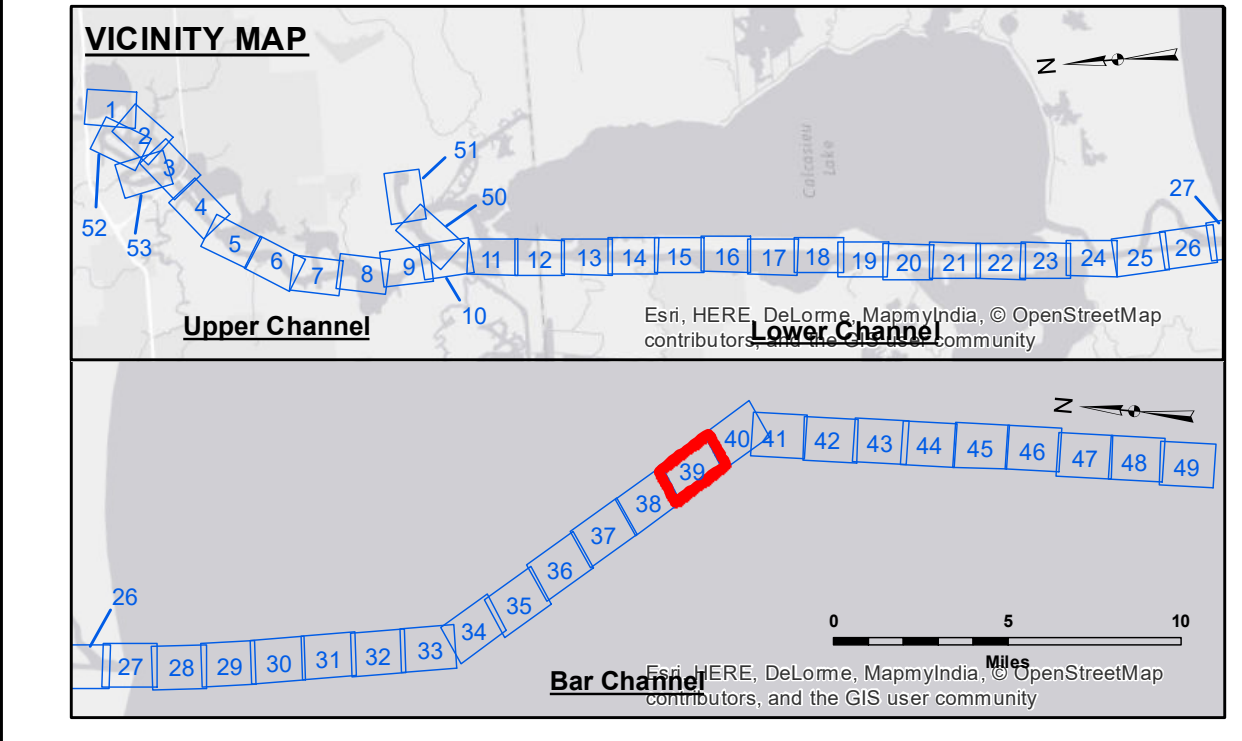
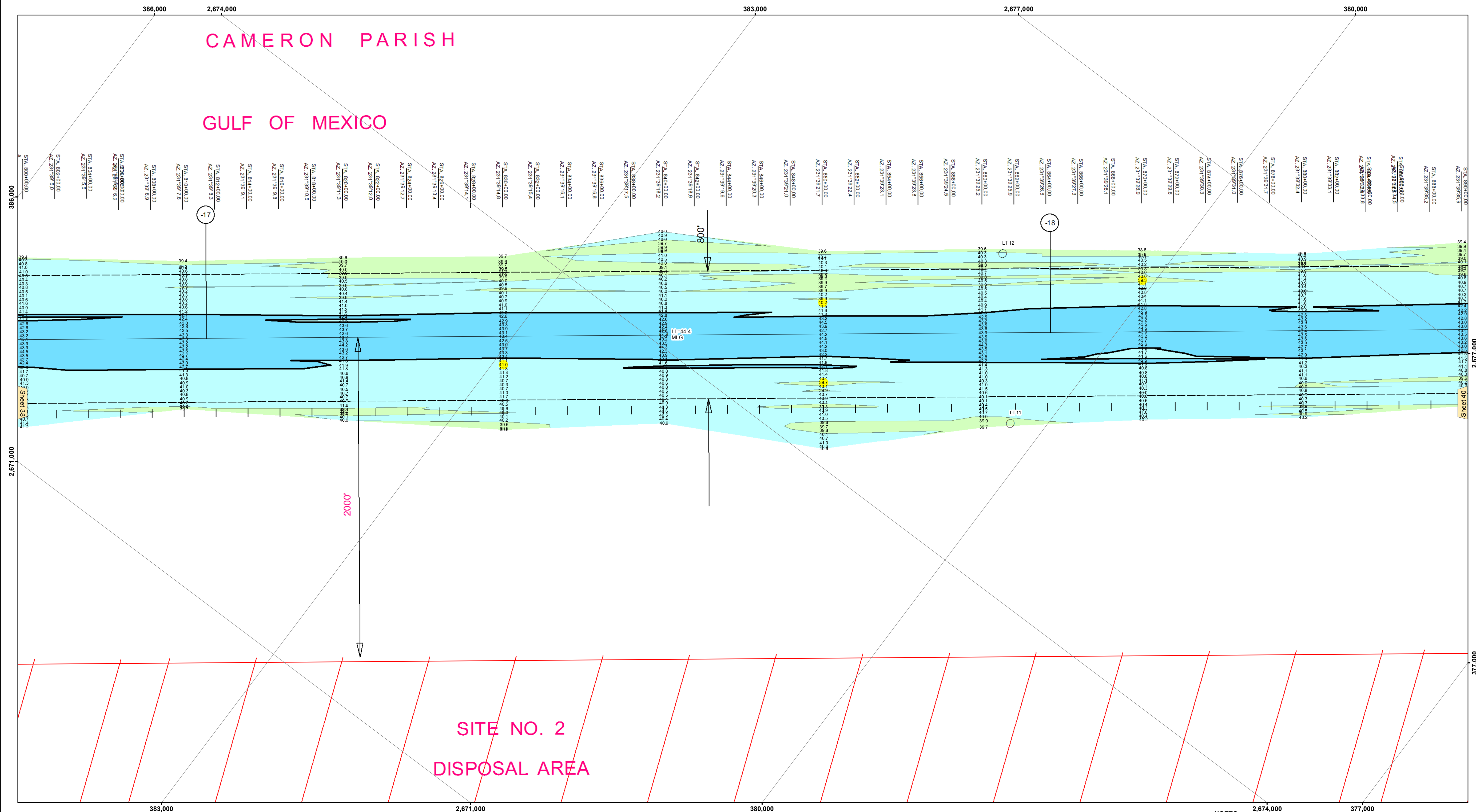


CAMERON PARISH

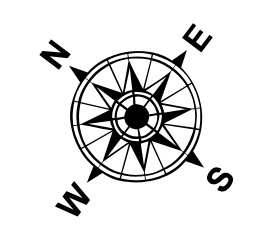
GULF OF MEXICO

SITE NO. 2
DISPOSAL AREA

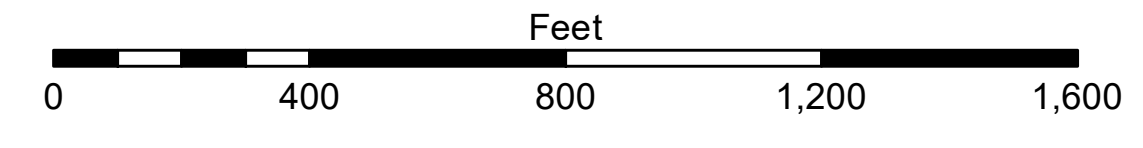


LEGEND

--- Federal Navigation Channel	○ Cable Area	3 Fluff Thickness (feet)*	■ -15' and above
— Federal Navigation Center Line	□ Placement Area	● Shoalest Sounding**	■ -15' to -20'
— As-built Pipeline/Cable	□ Anchorage Area	★ Beacon, General	■ -20' to -25'
..... Unconfirmed Pipeline/Cable	⊗ Obstruction Point	◆ Red Navigation Buoy	■ -25' to -32'
— Project Depth Contour	⚓ Wrecks-Submerged	◆ Green Navigation Buoy	■ -32' to -38'
			■ -38' to -40'
			■ -40' to -42'
			■ -42' and below



Gage Reading: CAMERON: 3.63 MLG
 Sea Conditions: 2-3'
 Vessel Name: M/V TECHE
 Survey Type: CONDITION
 Sounding Frequency***: LOW



NOTES:
 Horizontal Coordinate System:
 North American Datum of 1983 (NAD83), projected to the State Plane
 Coordinate System (SPCS), Louisiana South Zone. Distance units in U.S. Survey Feet.
 Vertical Datum:
 Soundings are shown in feet and indicate depths below Mean Low Gulf Datum (MLG).
 Datum Relationships for gage 73650 as of December 2013:
 0.0' NAVD83 (2009.55) = 1.3' MLLW = 2.3' MLG or 0.0' MLLW = 1.0' MLG
 Distances on the Calcasieu River are shown at 1 mile intervals.
 The location of navigation aids are base on and provided by the U.S. Coast Guard
 and USACE survey crews.
 2015 Aerial Photography data source: NAIP
 Reference is N.O.A. Navigation Chart No. 11339.
 * Difference between high and low frequency elevations where greater than 1.0'.
 ** Shoalest Sounding per Quarter per Reach.
 *** High frequency (200 kHz) survey data represents the first signal return at a sounding
 location and will include suspended solids, known as "fluff", if present. Low frequency (20 kHz)
 survey data normally penetrates through this "fluff" layer to depict elevations of consolidated bottom
 material. Low frequency accuracies may vary depending on channel conditions and fathometer
 settings.



DISCLAIMER
 The information depicted on this map represents the results of a hydrographic survey conducted by the U.S. Army Corps of Engineers. The user is responsible for the accuracy, completeness, and reliability of the data for their intended purpose. The user is advised to verify the data for their specific application. The U.S. Army Corps of Engineers does not warrant the accuracy, completeness, or reliability of the data for any purpose other than that for which it was collected. The user is advised to verify the data for their specific application. The U.S. Army Corps of Engineers does not warrant the accuracy, completeness, or reliability of the data for any purpose other than that for which it was collected.

U.S. ARMY CORPS OF ENGINEERS
NEW ORLEANS DISTRICT

Submitted:	Surveyed By: SR, JH
Recommended:	Plotted By: BD
Approved:	Checked By: AC

CALCASIEU SHIP CHANNEL
BAR SHEET 39
CR_39_BAR_20171018_CS
18 October 2017

Sheet Reference Number
39 of 53