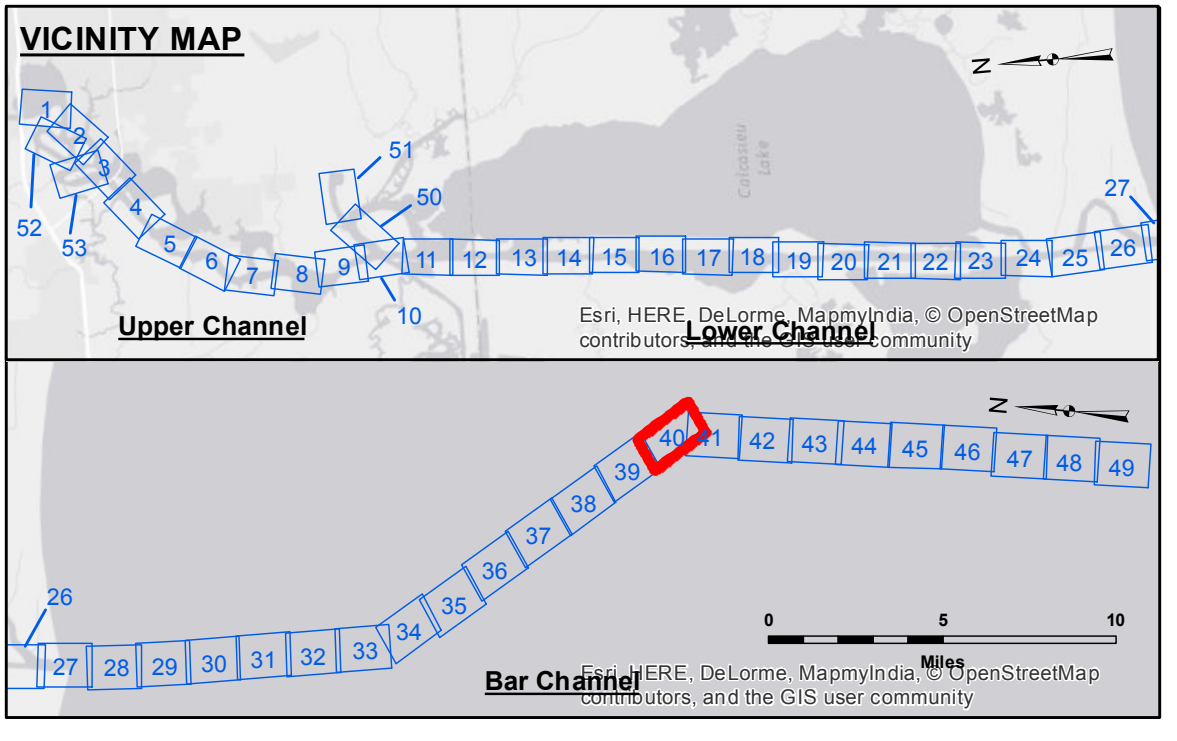


DISCLAIMER
 The information depicted on this map represents the results of a survey conducted by the United States Army Corps of Engineers. It is not intended to be used for any purpose other than that for which it was prepared. The user is responsible for the accuracy, completeness, and reliability of the information used in the design and construction of any project. The Corps of Engineers does not accept any liability for damages or losses resulting from the use of this information. The information depicted on this map represents the results of a survey conducted by the United States Army Corps of Engineers. It is not intended to be used for any purpose other than that for which it was prepared. The user is responsible for the accuracy, completeness, and reliability of the information used in the design and construction of any project. The Corps of Engineers does not accept any liability for damages or losses resulting from the use of this information.

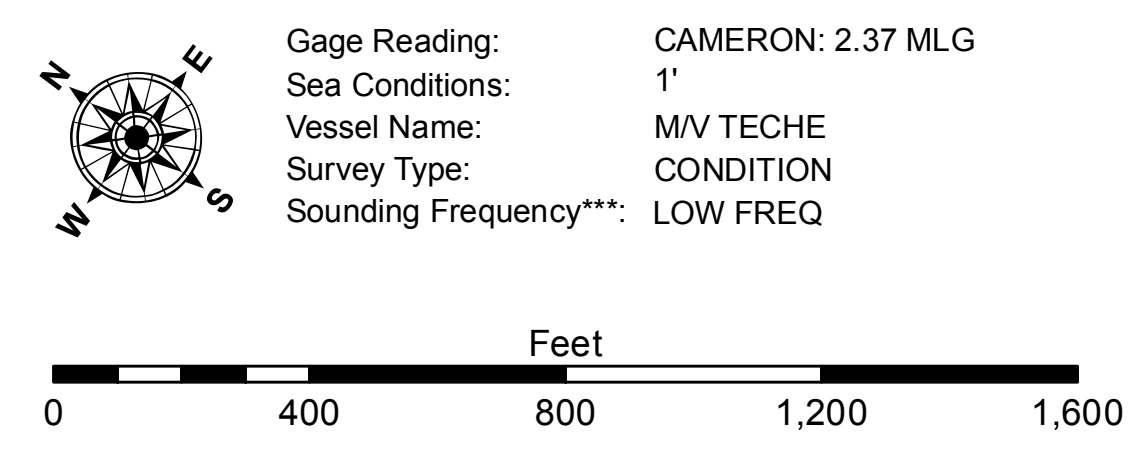
Submitted:	Surveyed By:	Reviewed By:	Checked By:
	sfj_jdh	BTD	TAF
Recommended:	Chief, Survey Section		
Approved:	Chief, Waterways Maintenance Section		

CALCASIEU SHIP CHANNEL
BAR SHEET 40
CR_40_BAR_20160405
05 April 2016

Sheet Reference Number
40 of 53



LEGEND		Color Key	
--- Federal Navigation Channel	○ Cable Area	Red	-15' and above
— Federal Navigation Center Line	□ Placement Area	Orange	-15' to -20'
— As-built Pipeline/Cable	□ Anchorage Area	Yellow	-20' to -25'
..... Unconfirmed Pipeline/Cable	⊗ Obstruction Point	Light Green	-25' to -32'
— Project Depth Contour	⚓ Wrecks-Submerged	Green	-32' to -38'
□ Borrow Area	★ Beacon, General	Light Blue	-38' to -40'
● Shoalest Sounding**	◆ Red Navigation Buoy	Dark Blue	-40' to -42'
★ Beacon, General	◆ Green Navigation Buoy		-42' and below



NOTES:
 Horizontal Coordinate System: North American Datum of 1983 (NAD83), projected to the State Plane Coordinate System (SPCS), Louisiana South Zone. Distance units in U.S. Survey Feet.
 Vertical Datum: CAMERON: 2.37 MLG
 Soundings are shown in feet and indicate depths below Mean Low Gulf Datum (MLG).
 Datum Relationships for gage 73650 as of December 2013:
 0.0' NAVD83 (2009.55) = 1.3' MLLW = 2.3' MLG or 0.0' MLLW = 1.0' MLG
 Distances on the Calcasieu River are shown at 1 mile intervals.
 The location of navigation aids are based on and provided by the U.S. Coast Guard and USACE survey crews.
 2010 Aerial Photography data source: NAIP
 Reference is N.O.A. Navigation Chart No. 11339.
 ** Shoalest Sounding per Quarter per Reach.
 *** High frequency (200 kHz) survey data represents the first signal return at a sounding location and will include suspended solids, known as "fluff", if present. Low frequency (20 kHz) survey data normally penetrates through this "fluff" layer to depict elevations of consolidated bottom material. Low frequency accuracies may vary depending on channel conditions and fathometer settings.