

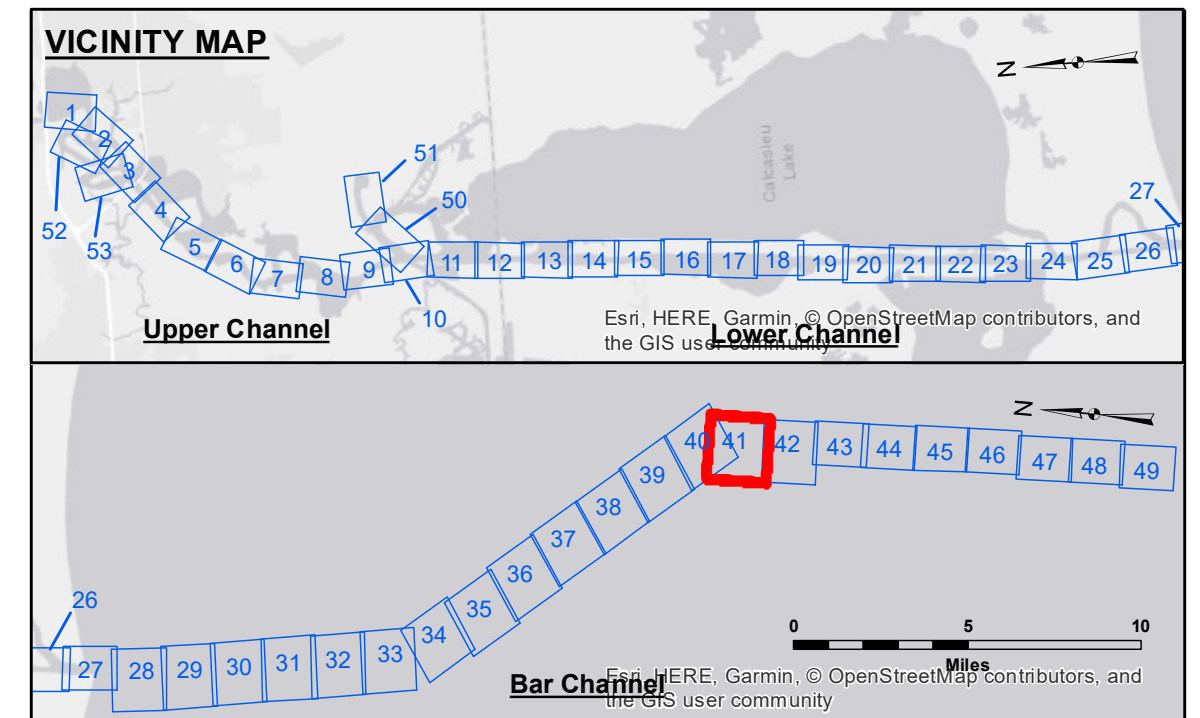
DISCLAIMER: The United States Government furnishes this information as a service to the public and does not warrant, represent, or guarantee the accuracy, reliability, or completeness of the information. The user is responsible for the use of the information for any purpose. The user is responsible for the use of the information for any purpose. The user is responsible for the use of the information for any purpose.

Submitted By:	SR, JH
Reviewed By:	AO
Checked By:	AO

**CALCASIEU SHIP CHANNEL
BAR SHEET 41
CR_41_BAFX_20170705_CS
05 July 2017**

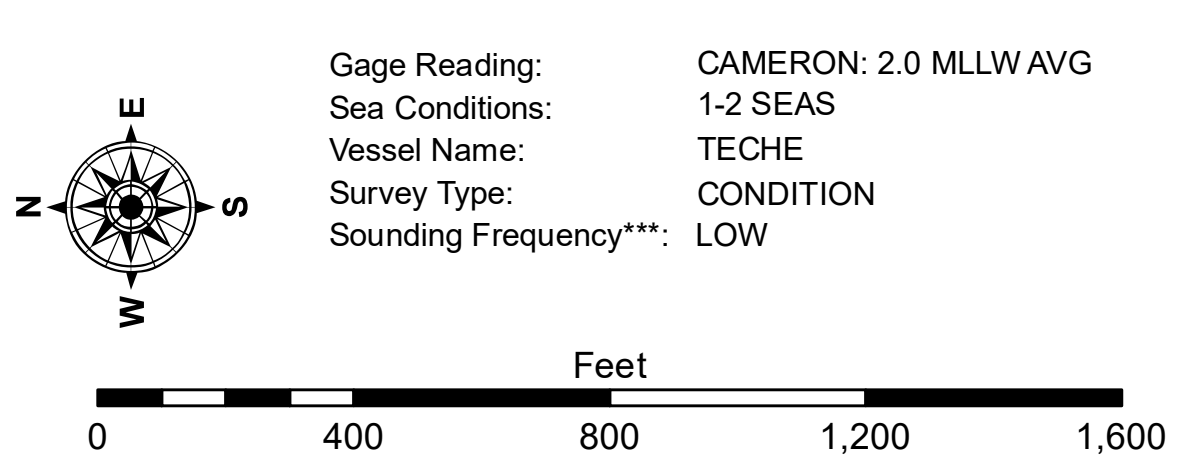
**Sheet Reference Number
41 of 53**

Revision Number: 3.13-201611



LEGEND

--- Federal Navigation Channel	○ Cable Area	3 Fluff Thickness (feet)*	■ -16' and above
— Federal Navigation Center Line	□ Placement Area	● Shoalest Sounding**	■ -21' to -26'
— As-built Pipeline/Cable	□ Anchorage Area	★ Beacon, General	■ -26' to -33'
--- Unconfirmed Pipeline/Cable	□ Obstruction Point	★ Red Navigation Buoy	■ -33' to -39'
— Project Depth Contour	★ Wrecks-Submerged	★ Green Navigation Buoy	■ -39' to -41'
			■ -41' to -43'
			■ -43' and below



NOTES:
Horizontal Coordinate System: North American Datum of 1983 (NAD83), projected to the State Plane Coordinate System (SPCS), Louisiana South Zone. Distance units in U.S. Survey Feet.
Vertical Datum: Soundings are shown in feet and indicate depths below Mean Lower Low Water Datum (MLLW). Datum Relationships for page 73650 as of December 2013: 0.0' NAVD83 (2009.55) = 1.3' MLLW = 2.3' MLG or 0.0' MLLW = 1.0' MLG
Distances on the Calcasieu River are shown at 1 mile intervals.
The location of navigation aids are based on and provided by the U.S. Coast Guard and USACE survey crews.
2015 Aerial Photography data source: NAIP
Reference is N.O.A. Navigation Chart No. 11339.
* Difference between high and low frequency elevations where greater than 1.0'.
** Shoalest Sounding per Quarter per Reach.
*** High frequency (200 kHz) survey data represents the first signal return at a sounding location and will include suspended solids, known as "fluff", if present. Low frequency (20 kHz) survey data normally penetrates through this "fluff" layer to depict elevations of consolidated bottom material. Low frequency accuracies may vary depending on channel conditions and fathometer settings.