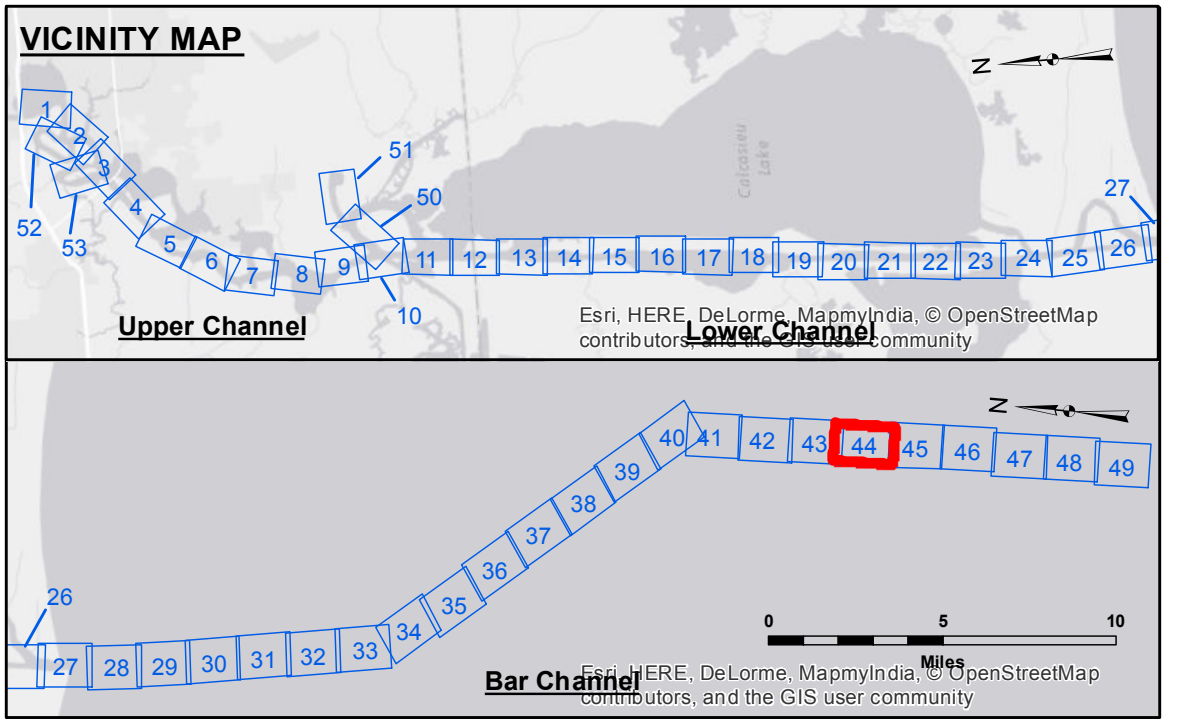


DISCLAIMER
 The United States Government furnishes these data and the recipient accepts and uses them with the express understanding that the data are not to be used for any purpose other than that for which they were originally intended. The user is responsible for the results of any use of the data for other than its intended purpose. The information depicted on this map represents the results of a hydrographic survey conducted on or after the date of publication and is not to be used for any purpose other than that for which it was originally intended. The user is responsible for the results of any use of the data for other than its intended purpose. The information depicted on this map represents the results of a hydrographic survey conducted on or after the date of publication and is not to be used for any purpose other than that for which it was originally intended. The user is responsible for the results of any use of the data for other than its intended purpose.

| | |
|--------------|-------------------------|
| Submitted: | Surveyed By: SJR,jdh |
| Recommended: | Plotted By: BTD |
| Approved: | Checked By: TAF |

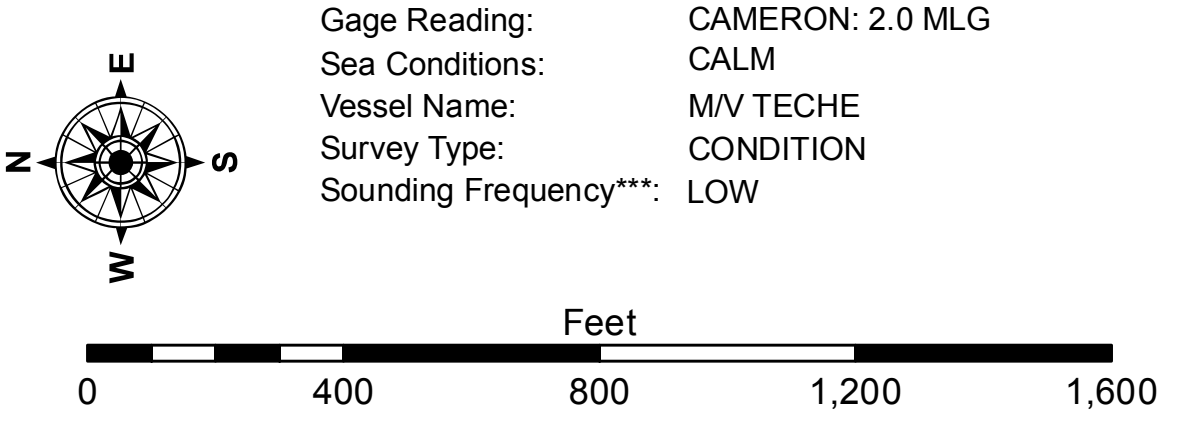
U.S. ARMY CORPS OF ENGINEERS
 NEW ORLEANS DISTRICT

CALCASIEU SHIP CHANNEL
BAR SHEET 44
CR_44_BAR_20150401
01 April 2015



LEGEND

| | | | |
|----------------------------------|---------------------|-------------------------|------------------|
| --- Federal Navigation Channel | ○ Cable Area | □ Borrow Area | ■ -15' and above |
| — Federal Navigation Center Line | □ Placement Area | ● Shoalest Sounding** | ■ -15' to -20' |
| — As-built Pipeline/Cable | □ Anchorage Area | ★ Beacon, General | ■ -20' to -25' |
| Unconfirmed Pipeline/Cable | ⊗ Obstruction Point | ◆ Red Navigation Buoy | ■ -25' to -32' |
| — Project Depth Contour | ⚓ Wrecks-Submerged | ◆ Green Navigation Buoy | ■ -32' to -38' |
| | | | ■ -38' to -40' |
| | | | ■ -40' to -42' |
| | | | ■ -42' and below |



NOTES:
 Horizontal Coordinate System: North American Datum of 1983 (NAD83), projected to the State Plane Coordinate System (SPCS), Louisiana South Zone. Distance units in U.S. Survey Feet.
 Vertical Datum: Soundings are shown in feet and indicate depths below Mean Low Gulf Datum (MLG). Datum Relationships for gage 73650 as of December 2013: 0.0' NAVD83 (2009.55) = 1.3' MLLW = 2.3' MLG or 0.0' MLLW = 1.0' MLG
 Distances on the Calcasieu River are shown at 1 mile intervals.
 The location of navigation aids are base on and provided by the U.S. Coast Guard and USACE survey crews.
 2010 Aerial Photography data source: NAIP
 Reference is N.O.A. Navigation Chart No. 11339.
 ** Shoalest Sounding per Quarter per Reach.
 *** High frequency (200 kHz) survey data represents the first signal return at a sounding location and will include suspended solids, known as "fluff", if present. Low frequency (20 kHz) survey data normally penetrates through this "fluff" layer to depict elevations of consolidated bottom material. Low frequency accuracies may vary depending on channel conditions and fathometer settings.

Sheet Reference Number
44 of 53

Revision Number:
 3.6.1-20140429