



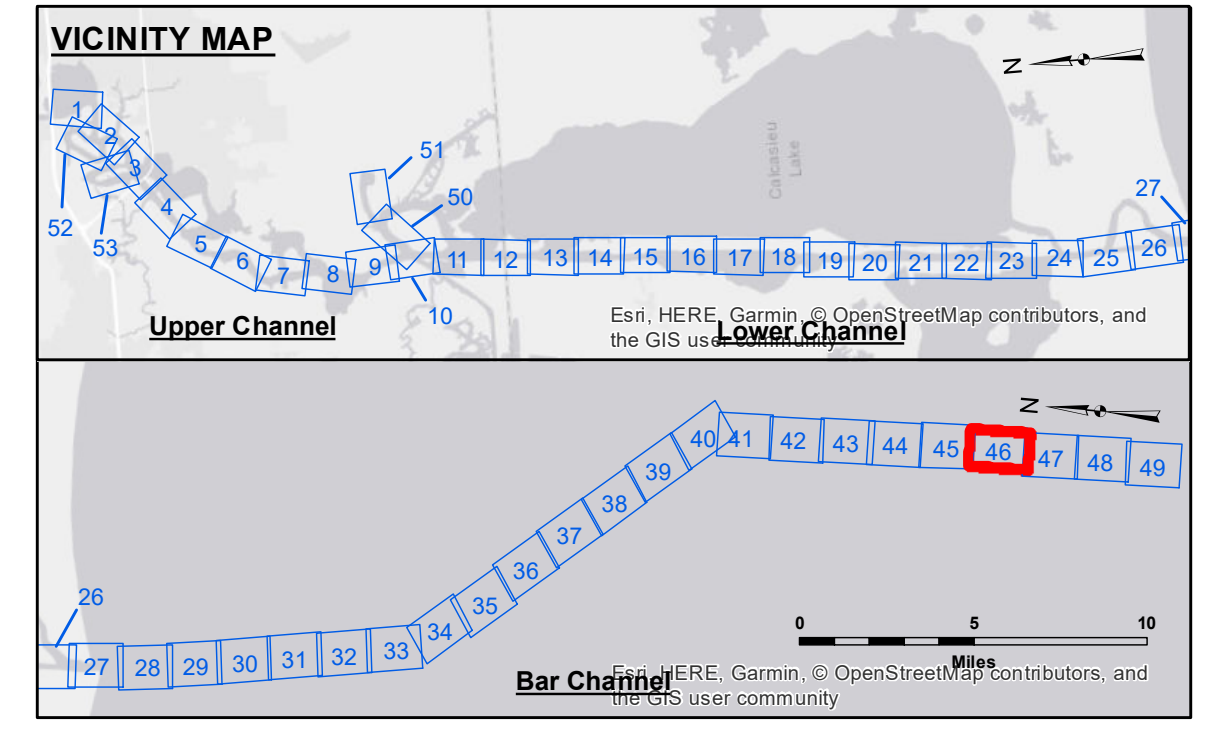
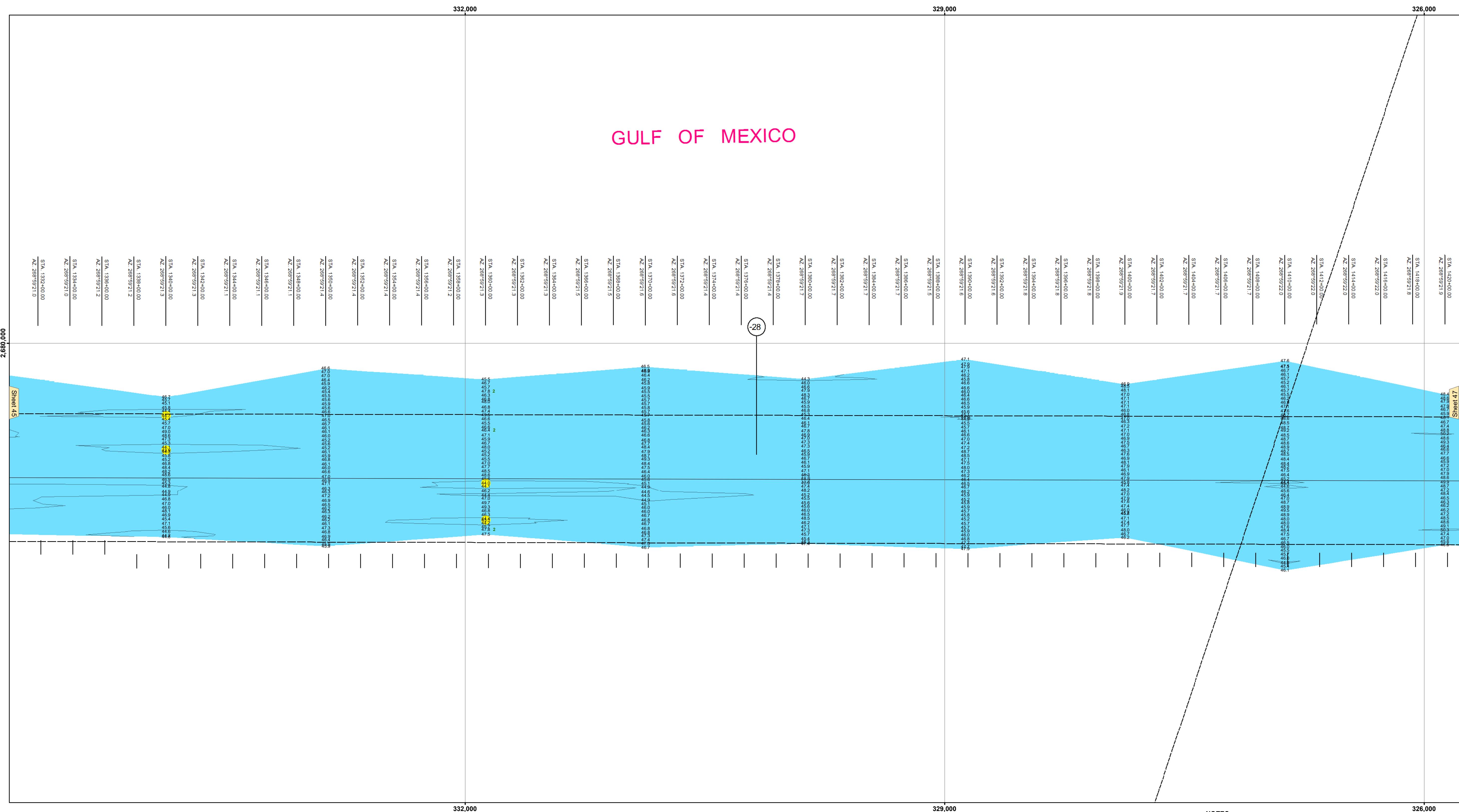
US Army Corps of Engineers District: CEMVN

Access/Use: The United States Government furnishes these data and the recipient accepts and uses them with the express understanding that the United States Government makes no warranty, expressed or implied, concerning the accuracy, completeness, reliability, usability or suitability for any particular purpose of the information. The user is responsible for the results obtained from the use of this information. Application of the data for other than its intended purpose is at the user's risk. The user is responsible for the results obtained from the use of this information. Application of the data for other than its intended purpose is at the user's risk.

Distribution Liability: The data represent the results of data collection for a specific US Army Corps of Engineers project and are only valid for its intended use, control, time and accuracy specifications. The user is responsible for the results obtained from the use of this information. Application of the data for other than its intended purpose is at the user's risk. The user is responsible for the results obtained from the use of this information. Application of the data for other than its intended purpose is at the user's risk.

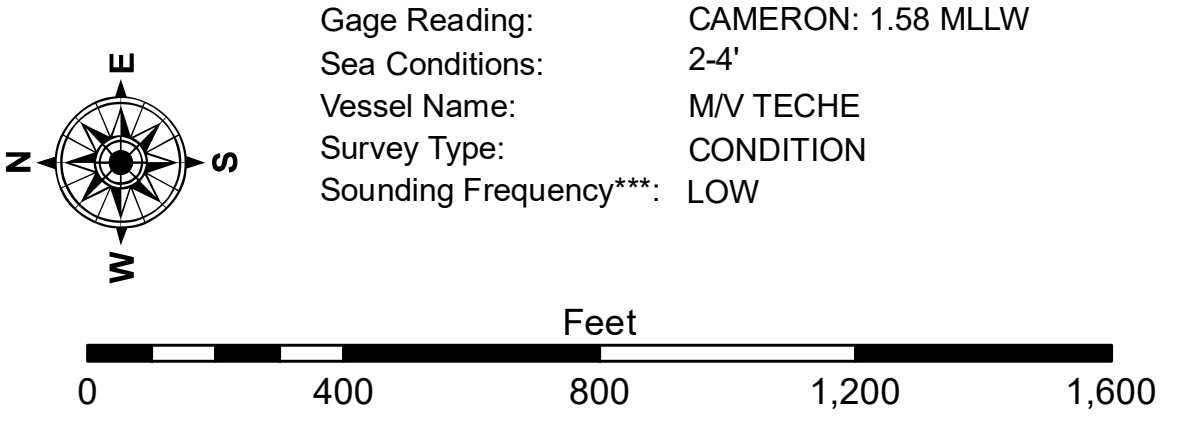
Data Contents: Hydrographic survey data is subject to change rapidly due to several factors including but not limited to dredging, sedimentation, and other natural processes. The user is responsible for the results obtained from the use of this information. Application of the data for other than its intended purpose is at the user's risk. The user is responsible for the results obtained from the use of this information. Application of the data for other than its intended purpose is at the user's risk.

Information depicted on this map represents the results of a survey conducted on the date indicated. The recipient may not transfer this data to others without also transferring this Disclaimer. The information depicted on this map represents the results of a survey conducted on the date indicated. The recipient may not transfer this data to others without also transferring this Disclaimer. The information depicted on this map represents the results of a survey conducted on the date indicated. The recipient may not transfer this data to others without also transferring this Disclaimer.



LEGEND

--- Federal Navigation Channel	○ Cable Area	3 Fluff Thickness (feet)*	■ -16' and above
— Federal Navigation Center Line	□ Placement Area	● Shoalest Sounding**	■ -16' to -21'
— As-built Pipeline/Cable	□ Anchorage Area	★ Beacon, General	■ -21' to -26'
..... Unconfirmed Pipeline/Cable	⊗ Obstruction Point	◆ Red Navigation Buoy	■ -26' to -33'
— Project Depth Contour	⚓ Wrecks-Submerged	◆ Green Navigation Buoy	■ -33' to -39'
			■ -39' to -41'
			■ -41' to -43'
			■ -43' and below



NOTES:

Coordinate System: North American Datum of 1983 (NAD83), projected to the State Plane Coordinate System (SPCS), Louisiana South Zone. Distance units in U.S. Survey Feet.

Vertical Datum: Soundings are shown in feet and indicate depths below Mean Lower Low Water Datum (MLLW). Datum Relationships for gage 73650 as of December 2013: 0.0' NAVD88 (2009.55) = 1.3' MLLW = 2.3' MLG or 0.0' MLLW = 1.0' MLG

Distances on the Calcasieu River are shown at 1 mile intervals.

The location of navigation aids are based on and provided by the U.S. Coast Guard and USACE survey crews.

2015 Aerial Photography data source: NAIP

Reference is N.O.A.A. Navigation Chart No. 11339.

* Difference between high and low frequency elevations where greater than 1.0'.

** Shoalest Sounding per Quarter per Reach.

*** High frequency (200 kHz) survey data represents the first signal return at a sounding location and will include suspended solids, known as "fluff", if present. Low frequency (20 kHz) survey data normally penetrates through this "fluff" layer to depict elevations of consolidated bottom material. Low frequency accuracies may vary depending on channel conditions and fathometer settings.

U.S. ARMY CORPS OF ENGINEERS
NEW ORLEANS DISTRICT

Submitted:	Surveyed By: SPS JH	Plotted By: BD	Checked By: AC
Recommended:	Chief, Survey Section		
Approved:	Chief, Waterways Maintenance Section		

**CALCASIEU SHIP CHANNEL
BAR SHEET 46
CR_46_BAR_20170911_CS_POSTSTORM
11 September 2017**

**Sheet Reference Number
46 of 53**

Revision Number:
3.13-20160811