



Accession Number: 3523000
The data represented on this map was derived from the results of a collection of data for a specific US Army Corps of Engineers project. It is not intended to be used for any other purpose. The user is responsible for the accuracy, completeness, and reliability of the data for their intended use. The user is responsible for the accuracy, completeness, and reliability of the data for their intended use. The user is responsible for the accuracy, completeness, and reliability of the data for their intended use.

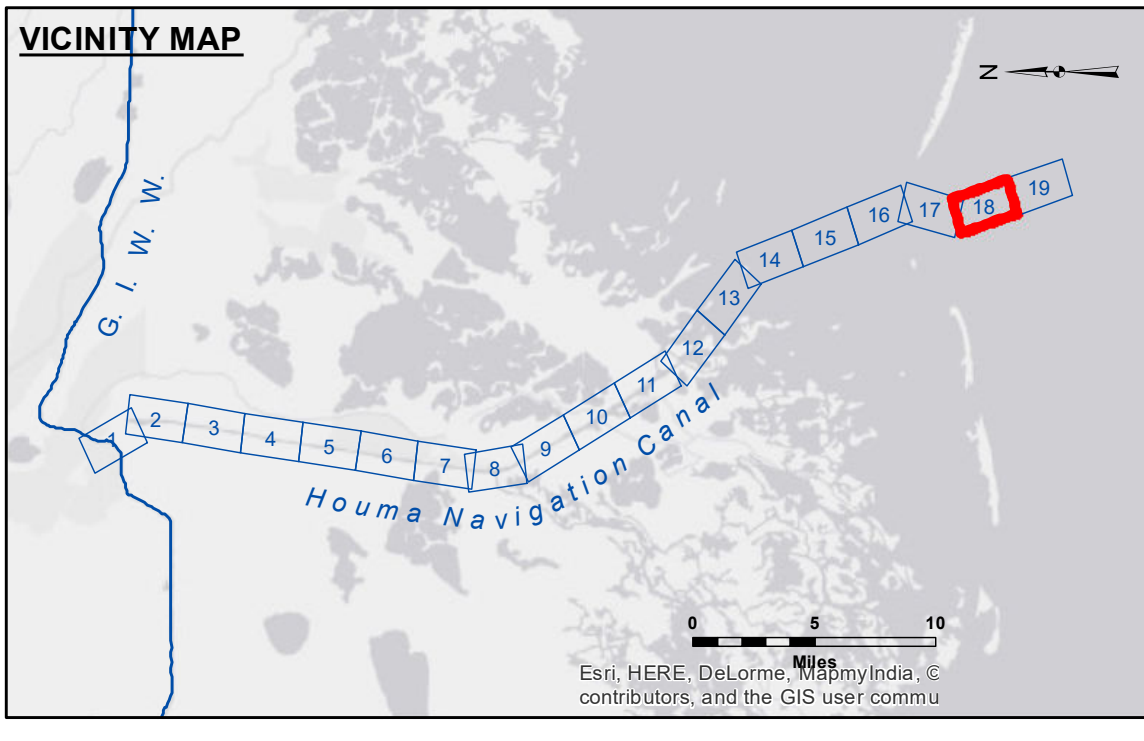
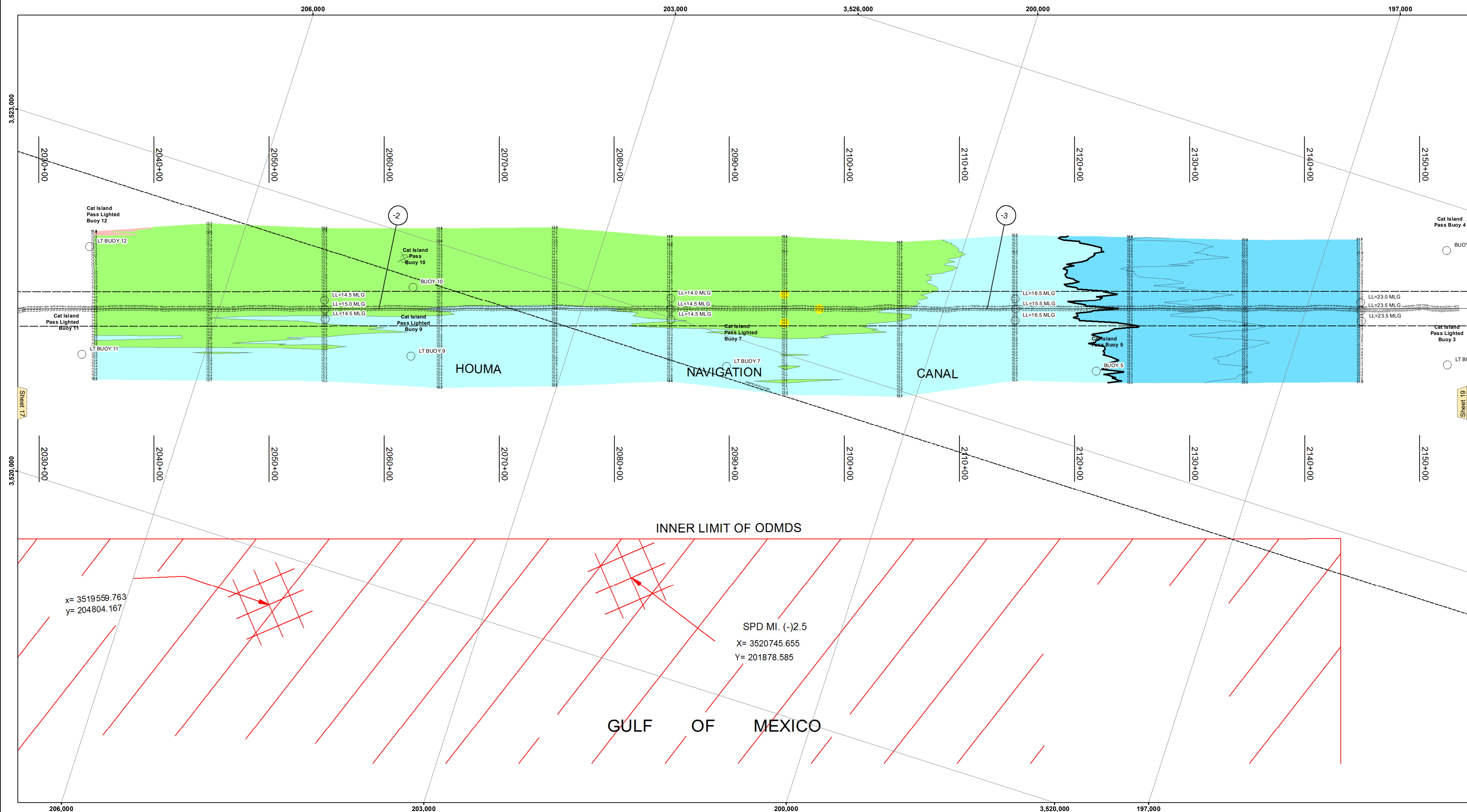
U.S. ARMY CORPS OF ENGINEERS
NEW ORLEANS DISTRICT

Submitted:	SP/PPM
Reviewed By:	BD
Checked By:	AC

HOUMA NAVIGATION CANAL
BAR CHANNEL
HN_18_BAR_20171012_CS
12 October 2017

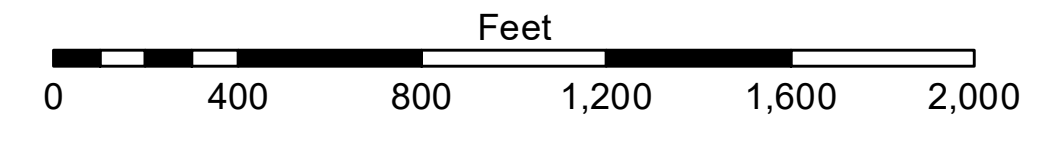
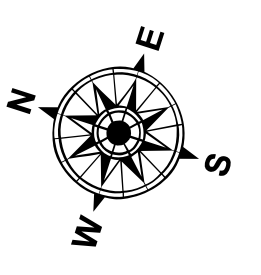
Sheet Reference Number
18 of 19

Revision Number:
3.13-20160811



LEGEND

--- Federal Navigation Channel	● Cable Area	□ Borrow Area	■ -12' and above
— Federal Navigation Center Line	□ Placement Area	● Shoalest Sounding**	■ -12' to -15'
— As-built Pipeline/Cable	□ Anchorage Area	★ Beacon, General	■ -15' to -18'
..... Unconfirmed Pipeline/Cable	⊗ Obstruction Point	◆ Red Navigation Buoy	■ -18' and below
— Project Depth Contour	⚓ Wrecks-Submerged	◆ Green Navigation Buoy	



Gage Reading: COCODRIE: 2.49 MLG
Sea Conditions: CHOPPY
Vessel Name: OB-167
Survey Type: CONDITION
Sounding Frequency***: LOW

NOTES:
Horizontal Coordinate System:
North American Datum of 1983 (NAD83), projected to the State Plane Coordinate System (SPCS), Louisiana South Zone. Distance units in U.S. Survey Feet.
Vertical Datum:
Soundings are shown in feet and indicate depths below Mean Low Gulf Datum (MLG).
Datum Relationships for 76305 as of August 2014:
0.0' NAVD88 (OPUS 2010) = 0.42' MLLW (2007-2011) = 1.34' MLG
Distances on the Houma Nav. Canal are shown at 1 mile intervals.
The location of navigation aids are base on and provided by the U.S. Coast Guard and USACE survey crews.
2015 Aerial Photography data source: NAIP
Reference is N.O.A.A. Navigation Chart No. 11355.
** Shoalest Sounding per Quarter per Reach.
*** High frequency (200 kHz) survey data represents the first signal return at a sounding location and will include suspended solids, known as "fluff", if present. Low frequency (20 kHz) survey data normally penetrates through this "fluff" layer to depict elevations of consolidated bottom material. Low frequency accuracies may vary depending on channel conditions and fathometer settings.