

**US Army Corps of Engineers District: CEMVN**

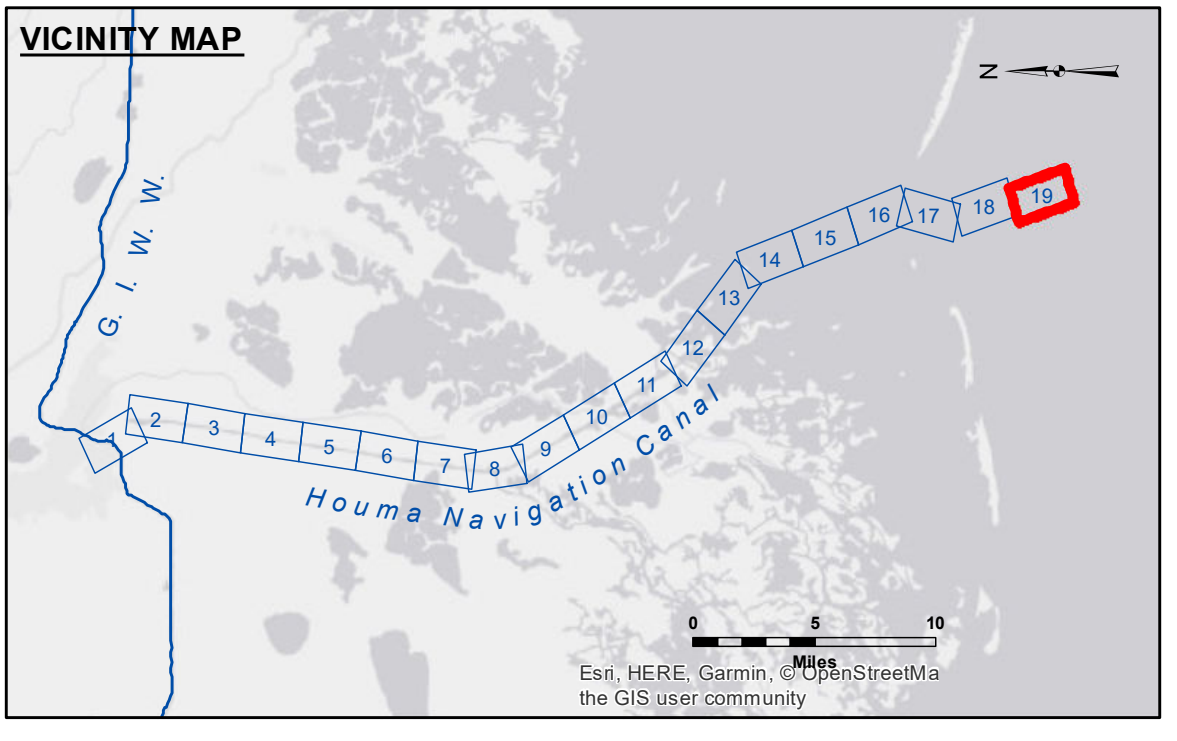
**Disclaimer:** The data represented on this map are the result of data collection and processing for a specific US Army Corps of Engineers project. The data is only valid for its intended use, control, time and accuracy specifications. The user is responsible for the results of any application of the data for other than its intended purpose.

**Data Accuracy:** Hydrographic survey data is subject to change rapidly due to several factors including but not limited to dredging, sedimentation, and other channel conditions. The US Army Corps of Engineers accepts no responsibility for changes in the hydrographic conditions when developed after the date of the survey. Product maintainers should not rely solely upon this information.

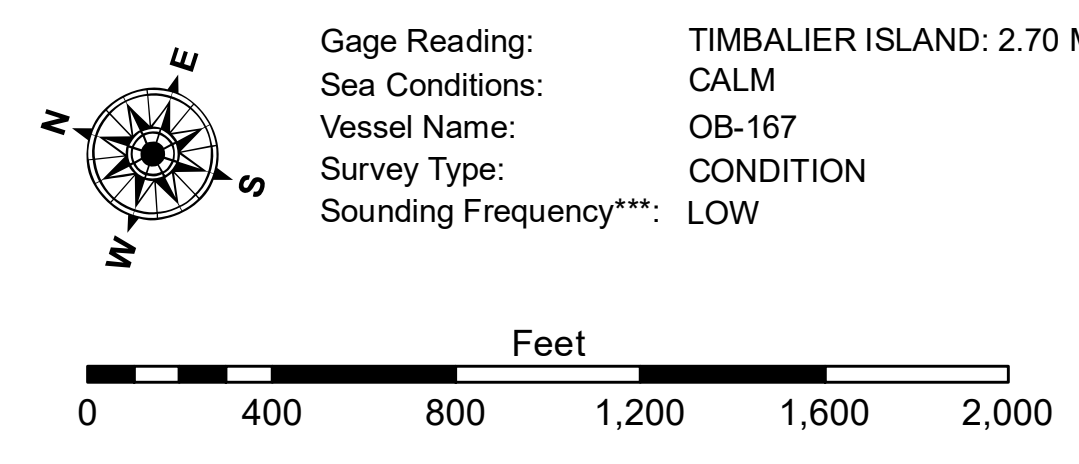
**Access:** The United States Government furnishes the express authority to use the data and the recipient accepts and uses them with the express understanding that the data are not to be used for any purpose other than that for which they were prepared, or applied to any other project, or for any other purpose, without the express written consent of the US Army Corps of Engineers. These data are being provided to you under no liability whatsoever to any person by reason of any use made of them. The data are being provided to you on an "as is" basis and the recipient understands that the data are not to be used for any purpose other than that for which they were prepared. The recipient may not transfer these data to others without obtaining the express written consent of the US Army Corps of Engineers. The information depicted on this map represents the results of a survey and is not to be used for any other purpose. The information is considered to represent the general conditions existing at that time.

|  |                       |                                      |
|--|-----------------------|--------------------------------------|
| Surveyed By: SPDS                                    | Plotted By: BD        | Checked By: AC                       |
| Submitted: _____                                     | Chief, Survey Section | Chief, Waterways Maintenance Section |
| U.S. ARMY CORPS OF ENGINEERS<br>NEW ORLEANS DISTRICT |                       |                                      |

**HOUMA NAVIGATION CANAL  
BAR CHANNEL  
HN\_19\_BAR\_20190719\_CS\_POSTSTORM  
19 July 2019**



| LEGEND                           |                     |                         |                  |
|----------------------------------|---------------------|-------------------------|------------------|
| --- Federal Navigation Channel   | ○ Cable Area        | □ Borrow Area           | ■ -12' and above |
| — Federal Navigation Center Line | □ Placement Area    | ● Shoalest Sounding**   | ■ -12' to -15'   |
| — As-built Pipeline/Cable        | □ Anchorage Area    | ★ Beacon, General       | ■ -15' to -18'   |
| ..... Unconfirmed Pipeline/Cable | ⊗ Obstruction Point | ◆ Red Navigation Buoy   | ■ -18' and below |
| — Project Depth Contour          | ⚓ Wrecks-Submerged  | ◆ Green Navigation Buoy |                  |



**NOTES:**  
Horizontal Coordinate System: North American Datum of 1983 (NAD83), projected to the State Plane Coordinate System (SPCS), Louisiana South Zone. Distance units in U.S. Survey Feet.

Vertical Datum: Soundings are shown in feet and indicate depths below Mean Low Gulf Datum (MLG). Datum Relationships for 76305 as of August 2014: 0.0' NAVD88 (OPUS 2010) = 0.42' MLLW (2007-2011) = 1.34' MLG

Distances on the Houma Nav. Canal are shown at 1 mile intervals.

The location of navigation aids are based on and provided by the U.S. Coast Guard and USACE survey crews.

2015 Aerial Photography data source: NAIP

Reference is N.O.A.A. Navigation Chart No. 11355.

\*\* Shoalest Sounding per Quarter per Reach.

\*\*\* High frequency (200 kHz) survey data represents the first signal return at a sounding location and will include suspended solids, known as "fluff", if present. Low frequency (20 kHz) survey data normally penetrates through this "fluff" layer to depict elevations of consolidated bottom material. Low frequency accuracies may vary depending on channel conditions and fathometer settings.

**Sheet Reference Number  
19 of 19**

Revision Number:  
3.13-20160811