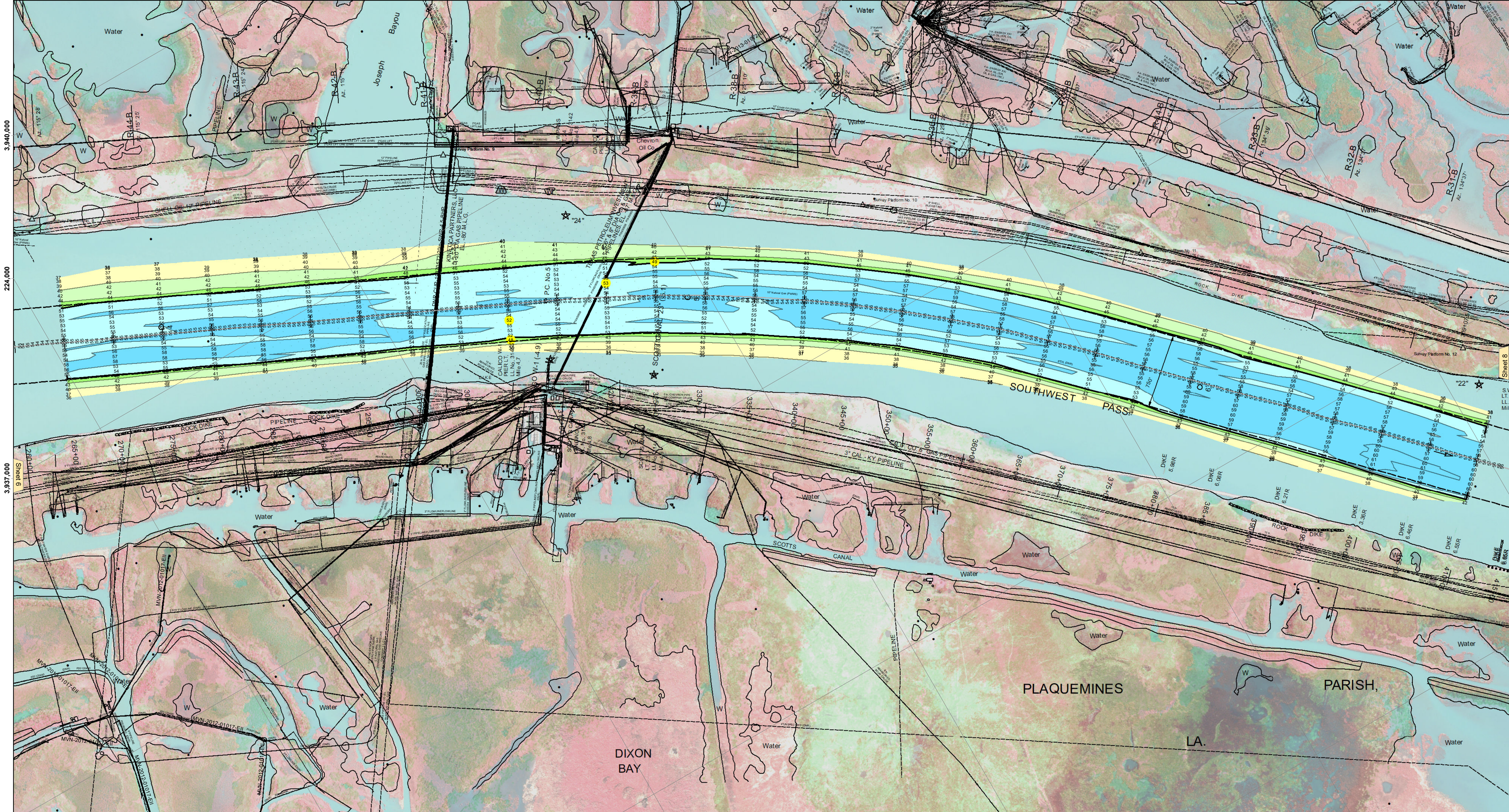
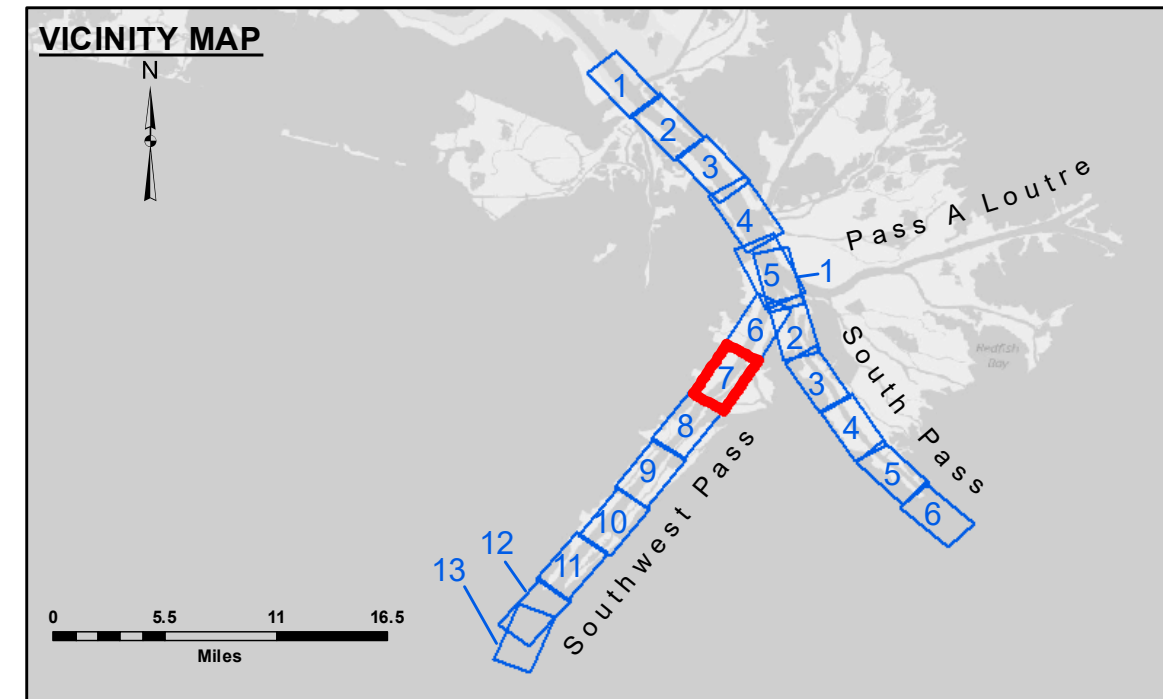


221,000 3,940,000 218,000 3,937,000 215,000 212,000 3,934,000

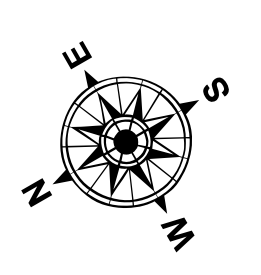


3,934,000 224,000 3,931,000 221,000 218,000 3,928,000 215,000

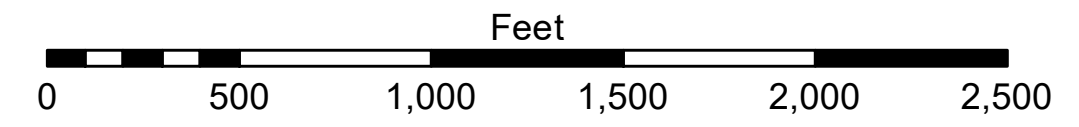


LEGEND

— Federal Navigation Channel	● Cable Area	□ Borrow Area	■ -10' and above
— Federal Navigation Center Line	■ Placement Area	● Shoalest Sounding**	■ -10' to -20'
— As-built Pipeline/Cable	□ Anchorage Area	★ Beacon, General	■ -20' to -30'
..... Unconfirmed Pipeline/Cable	⊗ Obstruction Point	◆ Red Navigation Buoy	■ -30' to -40'
— Project Depth Contour	★ Wrecks-Submerged	◆ Green Navigation Buoy	■ -40' to -45'
			■ -45' to -50'
			■ -50' to -55'
			■ -55' and below



Gage Reading: 0.5 MLLW @ H.O.P. (01545 OD) @ 0845
 Sea Conditions: CALM
 Vessel Name: BLANCHARD
 Survey Type: CONDITION, SB
 Sounding Frequency***: LOW



NOTES:
 Horizontal Coordinate System: North American Datum of 1983 (NAD83), projected to the State Plane Coordinate System (SPCS), Louisiana South Zone. Distance units in U.S. Survey Feet.
 Vertical Datum: Soundings are shown in feet and indicate depths below Mean Lower Low Water (MLLW, 12-16). Datum Relationships for gage 01545 as of March 2020: 0.0' NAVD88, 2009.55 = -0.32' MLLW = 3.18' MLG
 Distances on the Mississippi River, above and below Head of Passes are shown at 1 mile intervals.
 The location of navigation aids are base on and provided by the U.S. Coast Guard.
 2022 Aerial Photography data source: Optimal GEO (1998 DOQQ in green)
 Reference is N.O.A. Navigation Chart No. 11361.
 ** Shoalest Sounding per Quarter per Reach.
 *** High frequency (200 kHz) survey data represents the first signal return at a sounding location and will include suspended solids, known as "fluff", if present. Low frequency (24 kHz) survey data normally penetrates through this "fluff" layer to depict elevations of consolidated bottom material. Low frequency accuracies may vary depending on channel conditions and fathometer settings.



DISTRIBUTION LIABILITY: The data represents the results of data collection/processing for a specific US Army Corps of Engineers project and is only valid for its intended use, content, time and accuracy specifications. The user is responsible for the results and accuracy of the data. Approximation of the data for other than intended purpose.
 Data Constants: Hydrographic survey data is subject to change rapidly due to several factors including but not limited to dredging, sedimentation, and channel migration. The user is responsible for the accuracy of the data for their intended purpose. The user is not responsible for changes in the hydrographical conditions which develop after the date of the survey. The user is responsible for the accuracy of the data for their intended purpose. The user is not responsible for changes in the hydrographical conditions which develop after the date of the survey. The user is responsible for the accuracy of the data for their intended purpose.

**U.S. ARMY CORPS OF ENGINEERS
 NEW ORLEANS DISTRICT**

Submitted:	Surveyed By: JTB & DBD
Recommended:	Plotted By: TSS
Approved:	Checked By: MSK

**MISSISSIPPI RIVER - B.R. TO GULF
 SOUTHWEST PASS - SHEET 7
 SW_07_SWP_20240416_CS
 16 April 2024**

**Sheet Reference Number
 7 of 13**

Revision Number:
 4.2-202 (04/20)