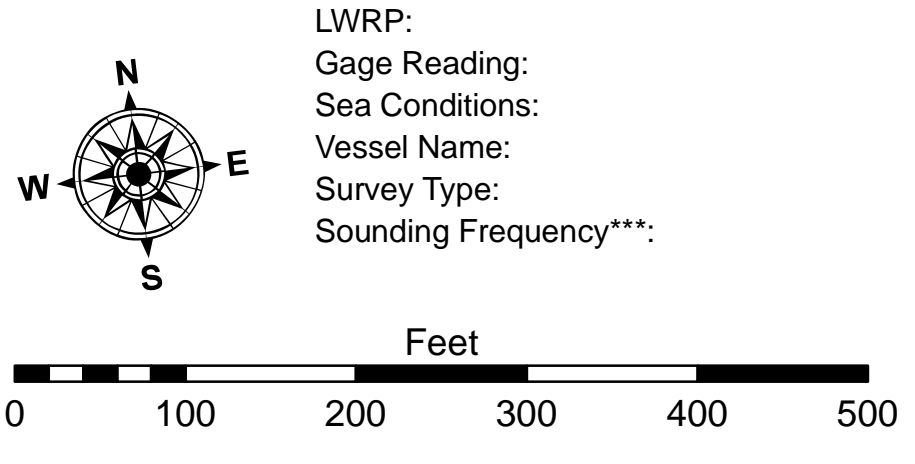


LEGEND		
--- Federal Navigation Channel	○ Cable Area	■ Shoaling Area
— Federal Navigation Center Line	□ Placement Area	● Shoalest Sounding**
— As-built Pipeline/Cable	□ Anchorage Area	★ Beacon, General
..... Unconfirmed Pipeline/Cable	⊗ Obstruction Point	◆ Red Navigation Buoy
— Project Depth Contour	✈ Wrecks-Submerged	◆ Green Navigation Buoy



**NOTES:**  
 Horizontal Coordinate System:  
 North American Datum of 1983 (NAD83), projected to the State Plane Coordinate System (SPCS), Louisiana South Zone. Distance units in U.S. Survey Feet.  
 Vertical Datum:  
 Elevations are shown in feet relative to NAVD88.  
 Distances on the Mississippi River, above and below Head of Passes are shown at 1 mile intervals.  
 The location of navigation aids are base on and provided by the U.S. Coast Guard and USACE crew.  
 2019 Aerial Photography data source: ED-SS  
 Reference is N.O.A. Navigation Chart No. 11370.  
 \*\* Shoalest Sounding per Quarter per Reach.  
 \*\*\* High frequency (200 kHz) survey data represents the first signal return at a sounding location and will include suspended solids, known as "fluff", if present. Low frequency (20 kHz) survey data normally penetrates through this "fluff" layer to depict elevations of consolidated bottom material. Low frequency accuracies may vary depending on channel conditions and fathometer settings.



**Legend**  
 Distribution Liability: The data represents the results of data collection/processing for a specific US Army Corps of Engineers project. It is only valid for its intended use, content, time and accuracy specifications. The user is responsible for the results of their use. The application of the data for other than its intended purpose, the user assumes all responsibility for changes in the data. Data Collection: Hydrographic survey data is subject to change rapidly due to several factors including but not limited to changing hydrographic conditions when developing the data of a project. The US Army Corps of Engineers accepts no responsibility for changes in the hydrographic conditions when developing the data of a project. Internal use. Product maintainers should not rely solely upon it.

U.S. ARMY CORPS OF ENGINEERS NEW ORLEANS DISTRICT	
Submitted:	Surveyed By: SURVEY_CREW
Room/Desk:	Plotted By: PLOTTED_BY
Approved:	Checked By: CHECKED_BY

**BONNET CARRE SPILLWAY  
 POST 2019 FLOOD SEDIMENTATION  
 1" ORTHO / 0.5' CONTOUR RES  
 UNMANNED AERIAL SURVEY**

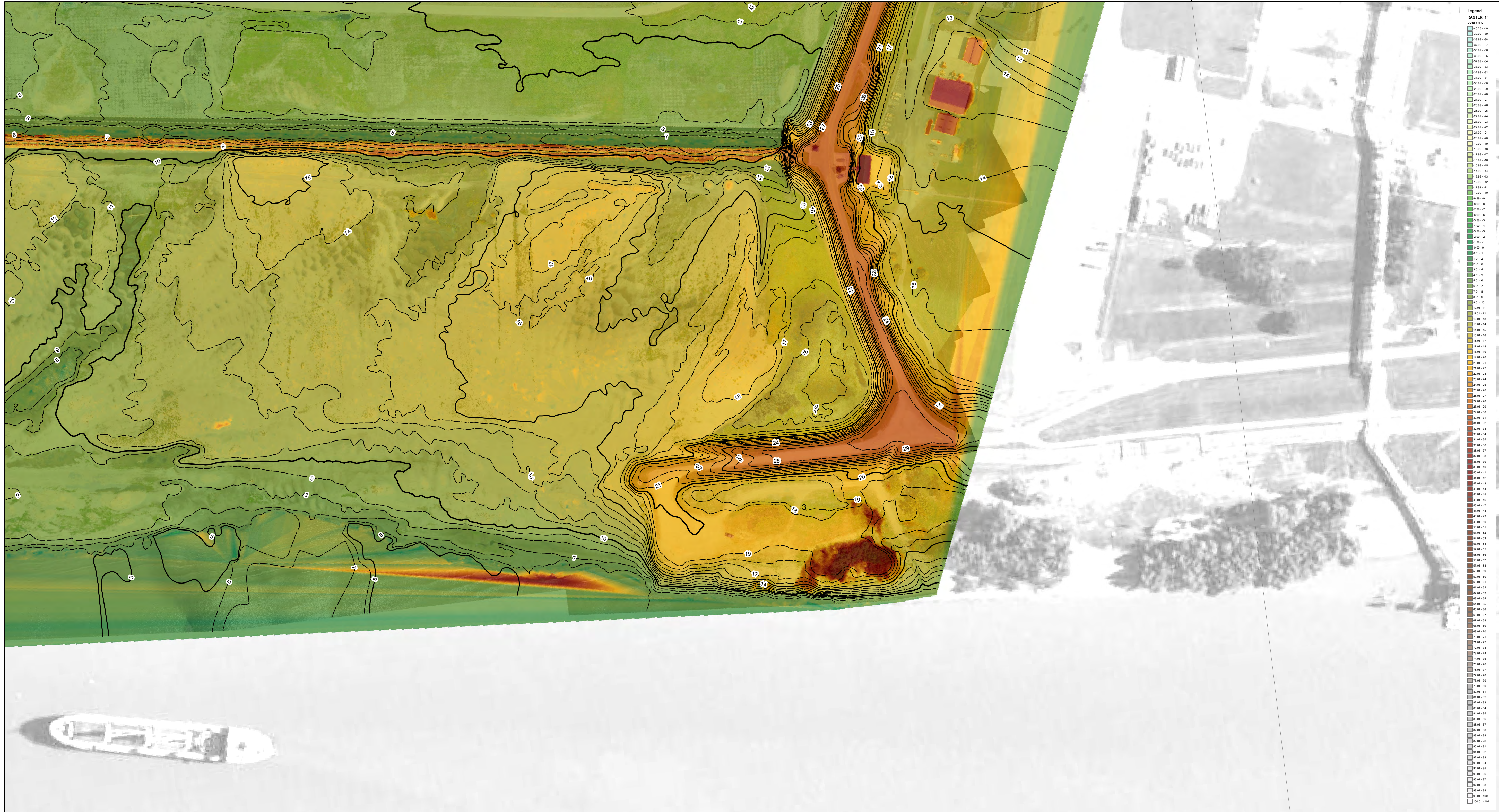
**Sheet  
 Reference  
 Number  
 1 of 14**







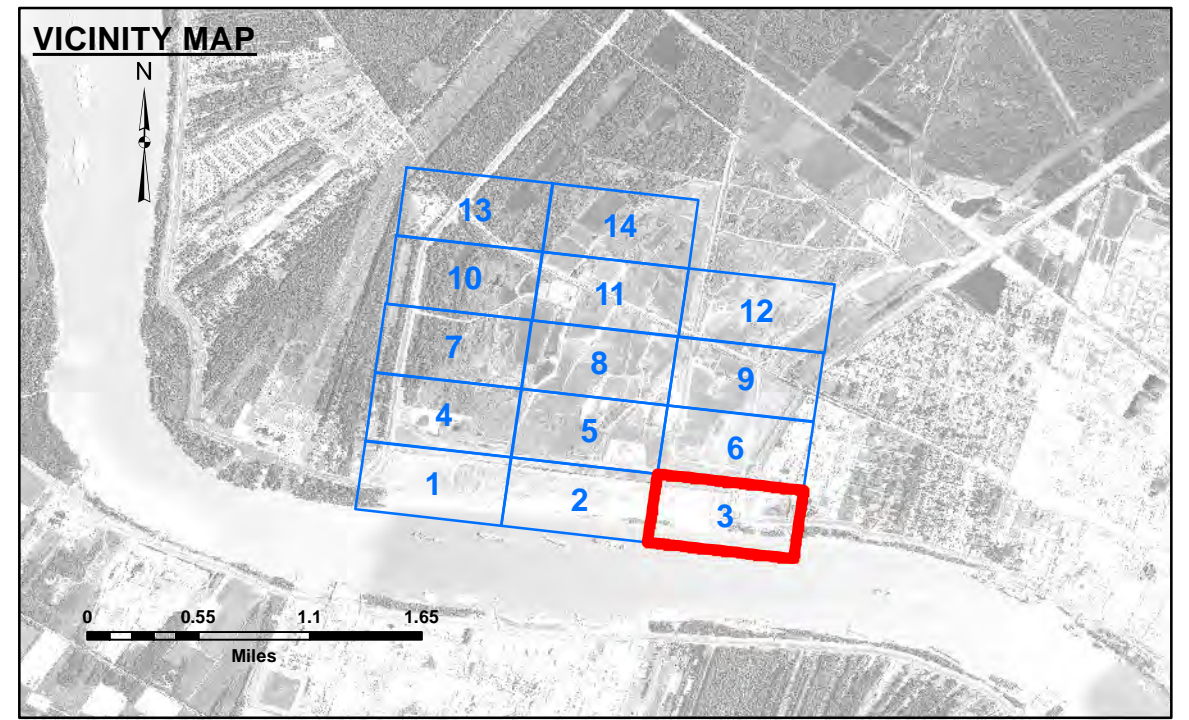
3,568,000



**DISCLAIMER**  
 The information depicted on this map represents the results of a survey conducted by the U.S. Army Corps of Engineers. It is not intended to be used for any purpose other than that for which it was prepared. The user is responsible for the accuracy, completeness, and reliability of the information. The user is responsible for the results of any use of the information. The user is responsible for the results of any use of the information. The user is responsible for the results of any use of the information.

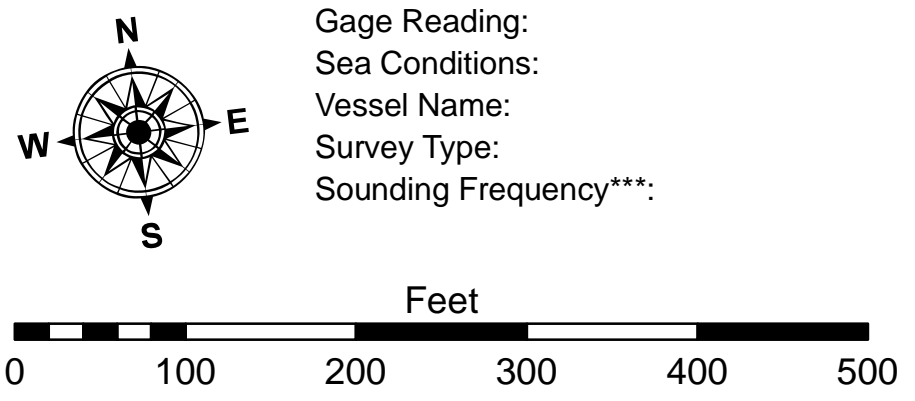
U.S. ARMY CORPS OF ENGINEERS NEW ORLEANS DISTRICT	
Submitted:	Surveyed By: SURVEY_CREW
Recommended: Chief, Survey Section	Plotted By: PLOTTED_BY
Approved:	Checked By: CHECKED_BY

**BONNET CARRE SPILLWAY  
 POST 2019 FLOOD SEDIMENTATION  
 1" ORTHO / 0.5' CONTOUR RES  
 UNMANNED AERIAL SURVEY**



**LEGEND**

--- Federal Navigation Channel	○ Cable Area	■ Shoaling Area
— Federal Navigation Center Line	□ Placement Area	● Shoalest Sounding**
— As-built Pipeline/Cable	⊠ Anchorage Area	★ Beacon, General
..... Unconfirmed Pipeline/Cable	⊗ Obstruction Point	◆ Red Navigation Buoy
— Project Depth Contour	✈ Wrecks-Submerged	◆ Green Navigation Buoy



**NOTES:**  
 Horizontal Coordinate System:  
 North American Datum of 1983 (NAD83), projected to the State Plane Coordinate System (SPCS), Louisiana South Zone. Distance units in U.S. Survey Feet.  
 Vertical Datum:  
 Elevations are shown in feet relative to NAVD88.  
 Distances on the Mississippi River, above and below Head of Passes are shown at 1 mile intervals.  
 The location of navigation aids are base on and provided by the U.S. Coast Guard and USACE crew.  
 2019 Aerial Photography data source: ED-SS  
 Reference is N.O.A. Navigation Chart No. 11370.  
 \*\* Shoalest Sounding per Quarter per Reach.  
 \*\*\* High frequency (200 kHz) survey data represents the first signal return at a sounding location and will include suspended solids, known as "fluff", if present. Low frequency (20 kHz) survey data normally penetrates through this "fluff" layer to depict elevations of consolidated bottom material. Low frequency accuracies may vary depending on channel conditions and bathymeter settings.

**Sheet  
 Reference  
 Number  
 3 of 14**

Revision Number:  
 2.1.0 Dv: 2013/02/23





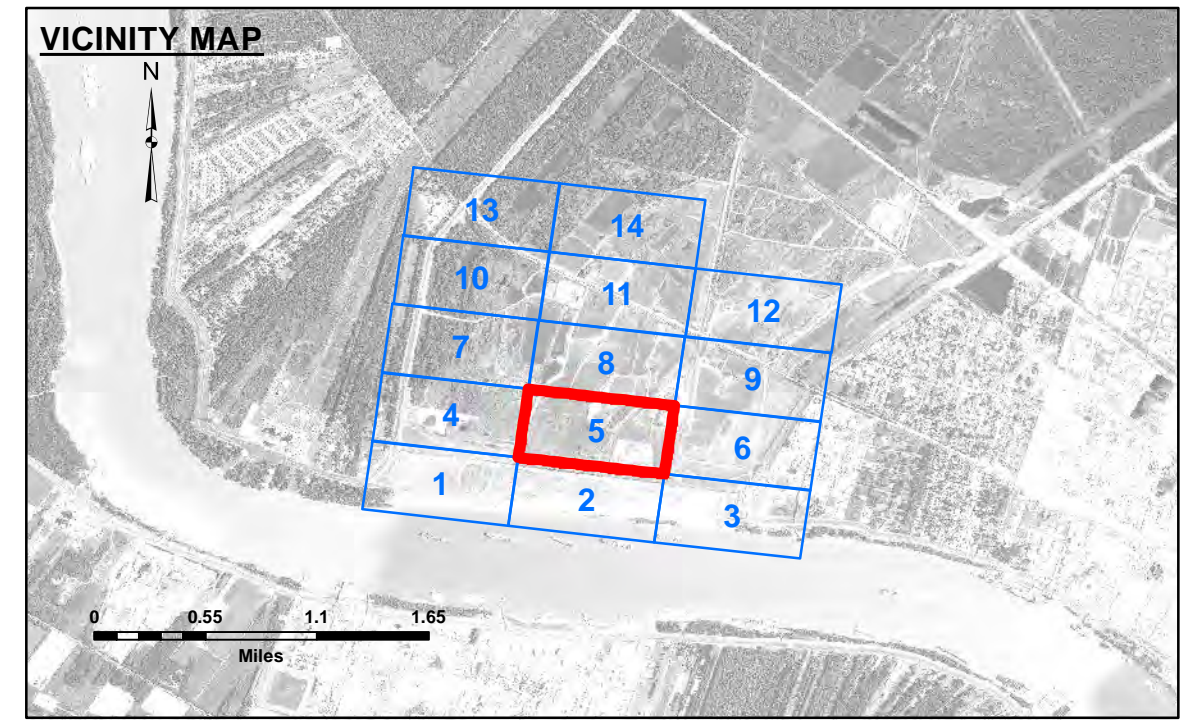


3,565,000

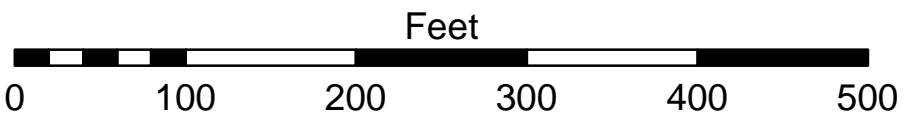
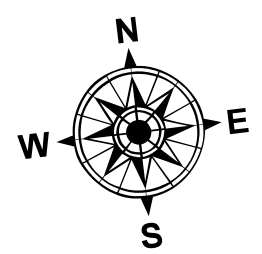


548,000

3,565,000



LEGEND		
--- Federal Navigation Channel	○ Cable Area	■ Shoaling Area
— Federal Navigation Center Line	□ Placement Area	● Shoalest Sounding**
— As-built Pipeline/Cable	□ Anchorage Area	★ Beacon, General
..... Unconfirmed Pipeline/Cable	⊗ Obstruction Point	◆ Red Navigation Buoy
— Project Depth Contour	✈ Wrecks-Submerged	◆ Green Navigation Buoy



LWRP:  
Gage Reading:  
Sea Conditions:  
Vessel Name:  
Survey Type:  
Sounding Frequency\*\*\*:

**NOTES:**  
Horizontal Coordinate System:  
North American Datum of 1983 (NAD83), projected to the State Plane Coordinate System (SPCS), Louisiana South Zone. Distance units in U.S. Survey Feet.  
Vertical Datum:  
Elevations are shown in feet relative to NAVD88.  
Distances on the Mississippi River, above and below Head of Passes are shown at 1 mile intervals.  
The location of navigation aids are base on and provided by the U.S. Coast Guard and USACE crew.  
2019 Aerial Photography data source: ED-SS  
Reference is N.O.A.A. Navigation Chart No. 11370.  
\*\* Shoalest Sounding per Quarter per Reach.  
\*\*\* High frequency (200 kHz) survey data represents the first signal return at a sounding location and will include suspended solids, known as "fluff", if present. Low frequency (20 kHz) survey data normally penetrates through this "fluff" layer to depict elevations of consolidated bottom material. Low frequency accuracies may vary depending on channel conditions and fathometer settings.



**DISCLAIMER:**  
Access Constraints: The United States Government furnishes these data and the recipient accepts and uses them with the express understanding that the data are not to be used for any purpose other than that for which they were collected, and that the data are not to be used for any purpose other than that for which they were collected, and that the data are not to be used for any purpose other than that for which they were collected.  
Distribution Liability: The data represents the results of data collection/processing for a specific US Army Corps of Engineers project. The user is responsible for the accuracy, completeness, and timeliness of the data. The user is responsible for the results of the data. The user is responsible for the results of the data. The user is responsible for the results of the data.  
Data Constraints: Hydrographic survey data is subject to change rapidly due to several factors including but not limited to changing hydrographic conditions when developing after the date of the survey. The user is responsible for the accuracy, completeness, and timeliness of the data. The user is responsible for the results of the data. The user is responsible for the results of the data.

U.S. ARMY CORPS OF ENGINEERS NEW ORLEANS DISTRICT	
Submitted:	Surveyed By: SURVEY_CREW
Recommended:	Plotted By: PLOTTED_BY
Approved:	Checked By: CHECKED_BY

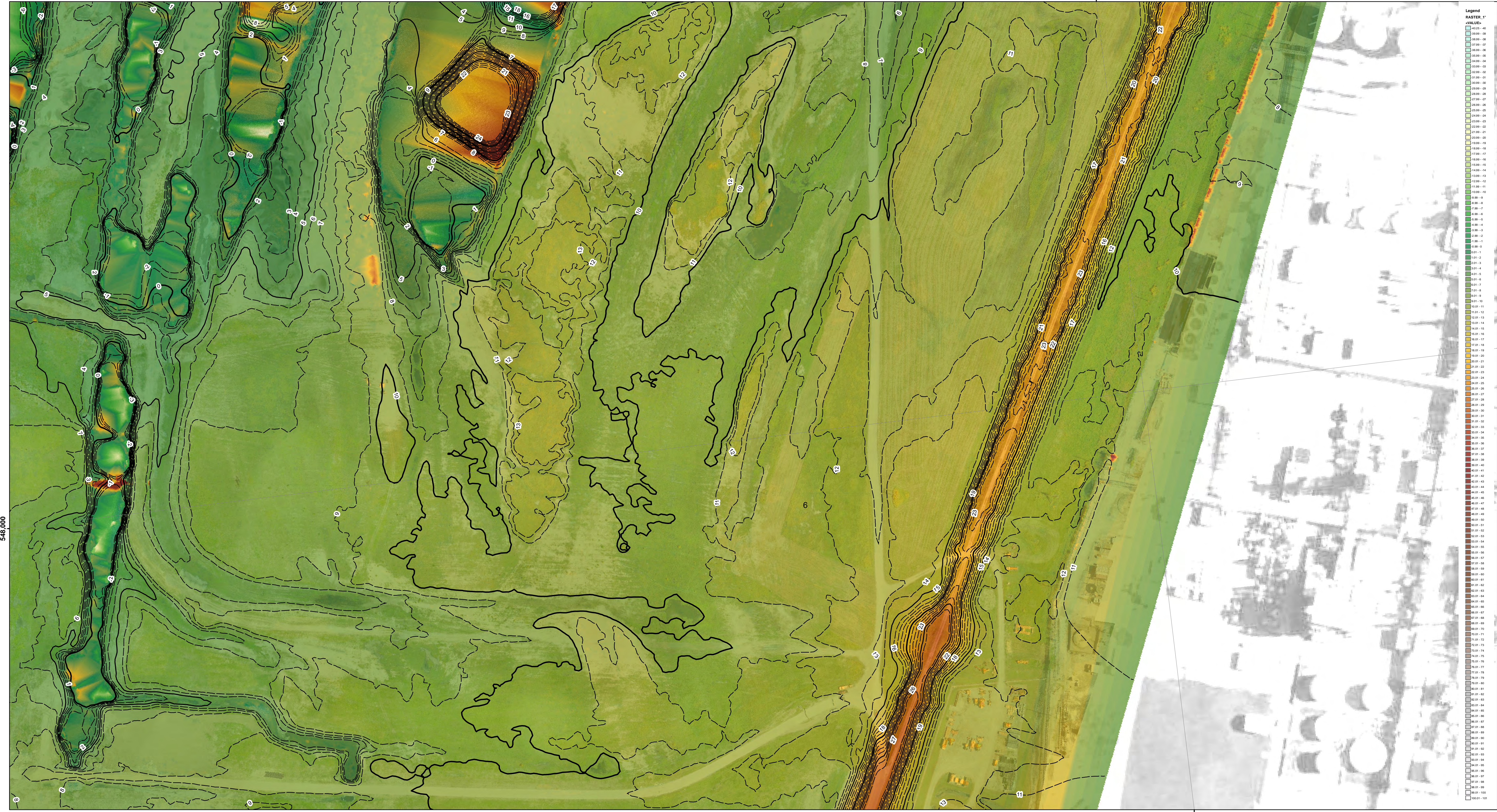
**BONNET CARRE SPILLWAY  
POST 2019 FLOOD SEDIMENTATION  
1" ORTHO / 0.5' CONTOUR RES  
UNMANNED AERIAL SURVEY**

**Sheet  
Reference  
Number  
5 of 14**

Revision Number:  
2.1.0 Dv: 2/1/2023



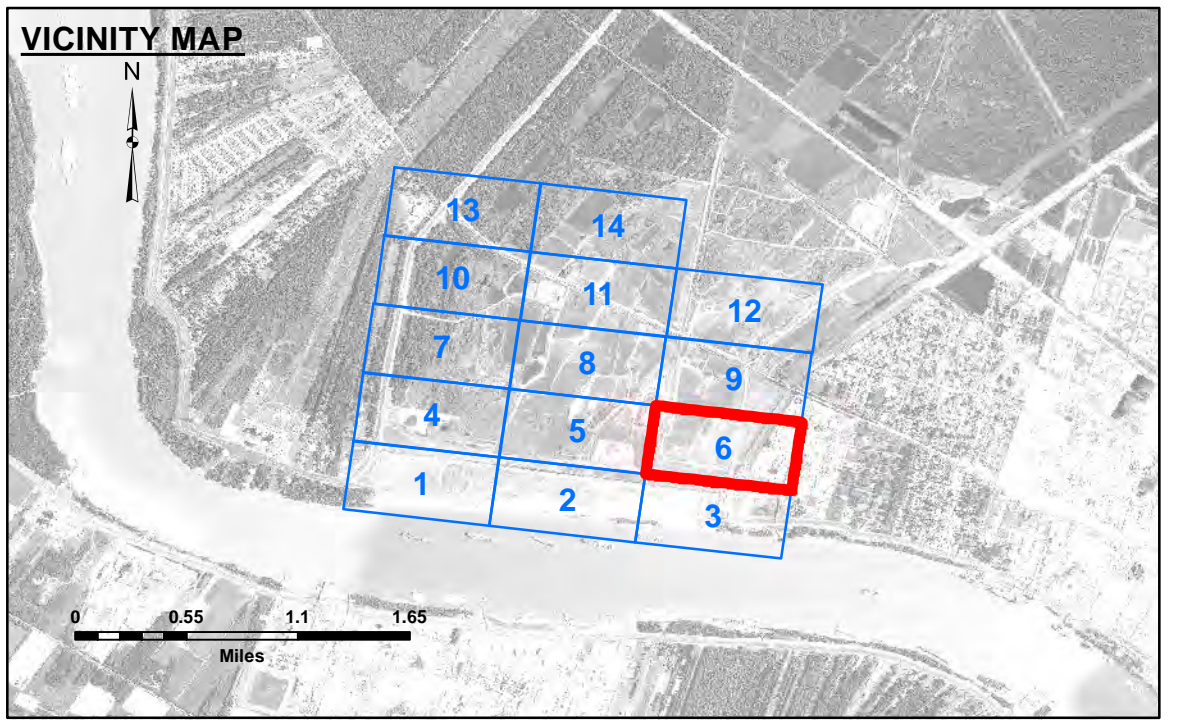
3,568,000



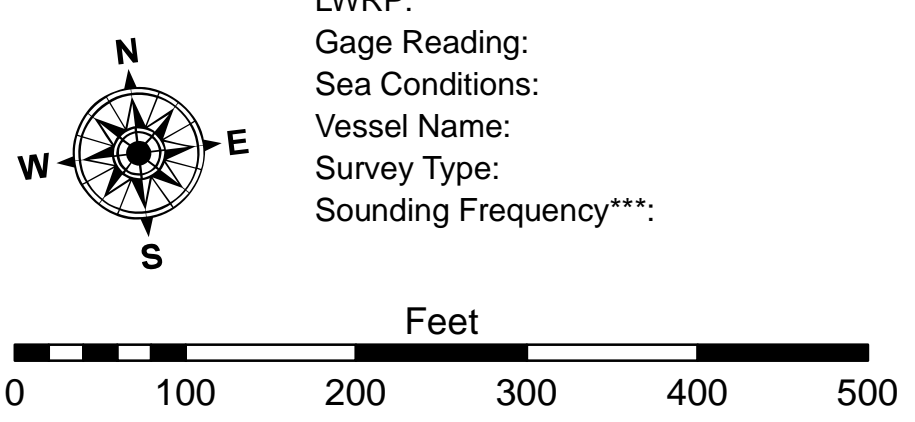
548,000

548,000

3,568,000



LEGEND		
--- Federal Navigation Channel	○ Cable Area	■ Shoaling Area
— Federal Navigation Center Line	□ Placement Area	● Shoalest Sounding**
— As-built Pipeline/Cable	□ Anchorage Area	☆ Beacon, General
..... Unconfirmed Pipeline/Cable	⊗ Obstruction Point	◆ Red Navigation Buoy
— Project Depth Contour	⚓ Wrecks-Submerged	◆ Green Navigation Buoy



LWRP:  
Gage Reading:  
Sea Conditions:  
Vessel Name:  
Survey Type:  
Sounding Frequency\*\*\*:

**NOTES:**  
Horizontal Coordinate System:  
North American Datum of 1983 (NAD83), projected to the State Plane Coordinate System (SPCS), Louisiana South Zone. Distance units in U.S. Survey Feet.  
  
Vertical Datum:  
Elevations are shown in feet relative to NAVD88.  
  
Distances on the Mississippi River, above and below Head of Passes are shown at 1 mile intervals.  
  
The location of navigation aids are base on and provided by the U.S. Coast Guard and USACE crew.  
2019 Aerial Photography data source: ED-SS  
Reference is N.O.A. Navigation Chart No. 11370.  
\*\* Shoalest Sounding per Quarter per Reach.  
\*\*\* High frequency (200 kHz) survey data represents the first signal return at a sounding location and will include suspended solids, known as "fluff", if present. Low frequency (20 kHz) survey data normally penetrates through this "fluff" layer to depict elevations of consolidated bottom material. Low frequency accuracies may vary depending on channel conditions and fathometer settings.

U.S. ARMY CORPS OF ENGINEERS NEW ORLEANS DISTRICT	
Submitted:	Surveyed By: SURVEY_CREW
Recommender: Chief, Survey Section	Plotted By: PLOTTED_BY
Approved:	Checked By: CHECKED_BY

**BONNET CARRE SPILLWAY  
POST 2019 FLOOD SEDIMENTATION  
1" ORTHO / 0.5' CONTOUR RES  
UNMANNED AERIAL SURVEY**

Sheet  
Reference  
Number  
**6 of 14**

Revision Number:  
2.1.0 Dv: 20130823

**ACCESS NOTES**  
Access Constraints: The United States Government furnishes these data and the recipient accepts and uses them with the express understanding that the data are not to be used for any purpose other than that for which they were prepared, and that the data are not to be used for any purpose other than that for which they were prepared, and that the data are not to be used for any purpose other than that for which they were prepared.

**DISTRIBUTION LIABILITY:** The data represents the results of data collection/processing for a specific US Army Corps of Engineers project. The user is responsible for the accuracy, completeness, and timeliness of the data. The user is responsible for the results of the data. The user is responsible for the results of the data. The user is responsible for the results of the data.

**Data Constraints:** Hydrographic survey data is subject to change rapidly due to several factors including but not limited to changing hydrographic conditions when developing after the date of the survey. The user is responsible for the accuracy, completeness, and timeliness of the data. The user is responsible for the results of the data. The user is responsible for the results of the data.

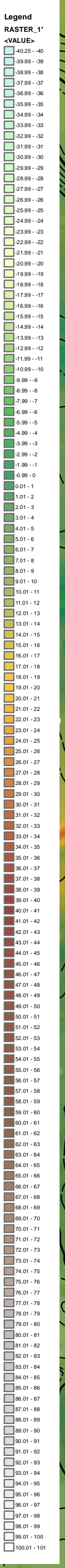
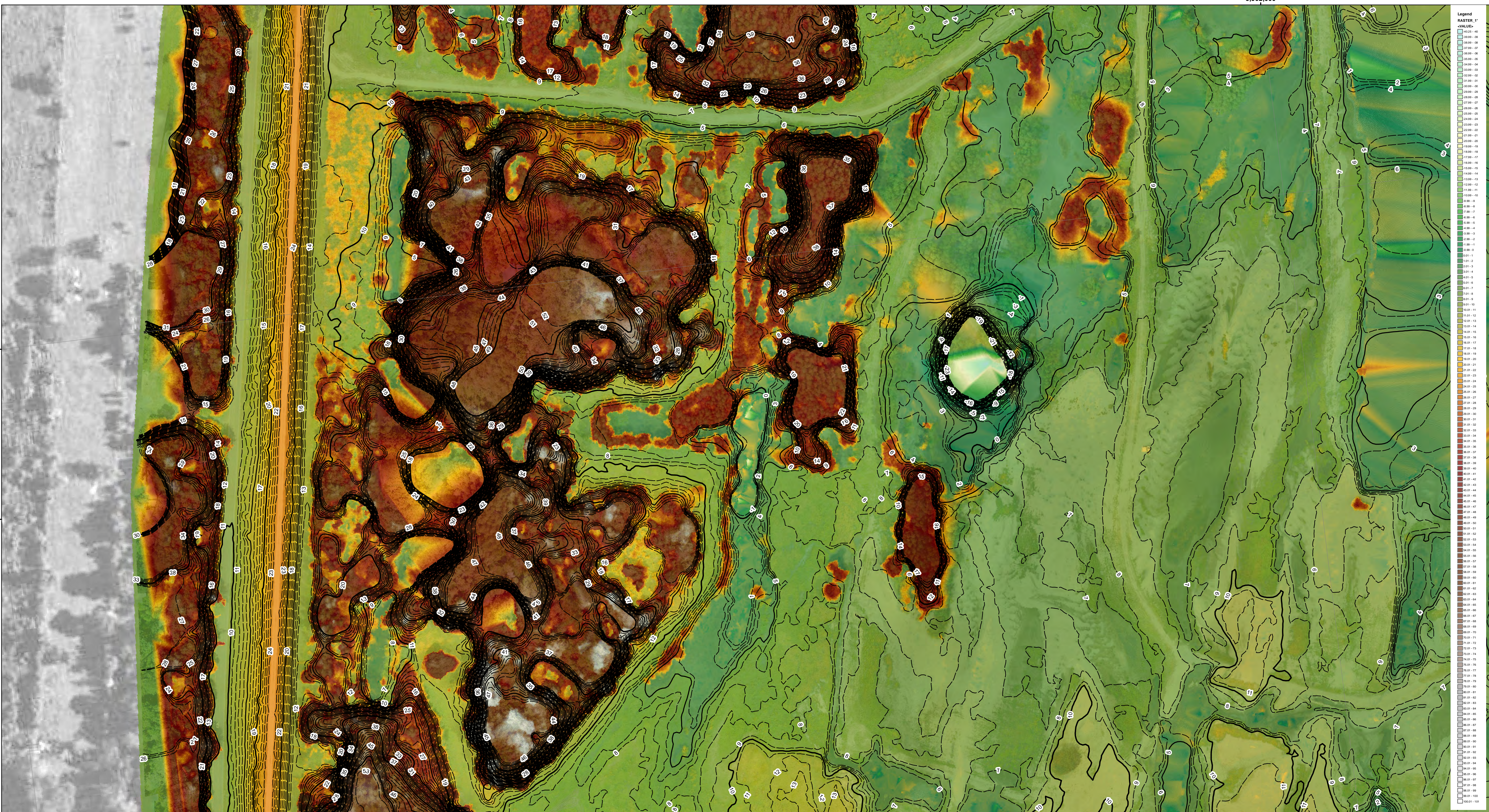




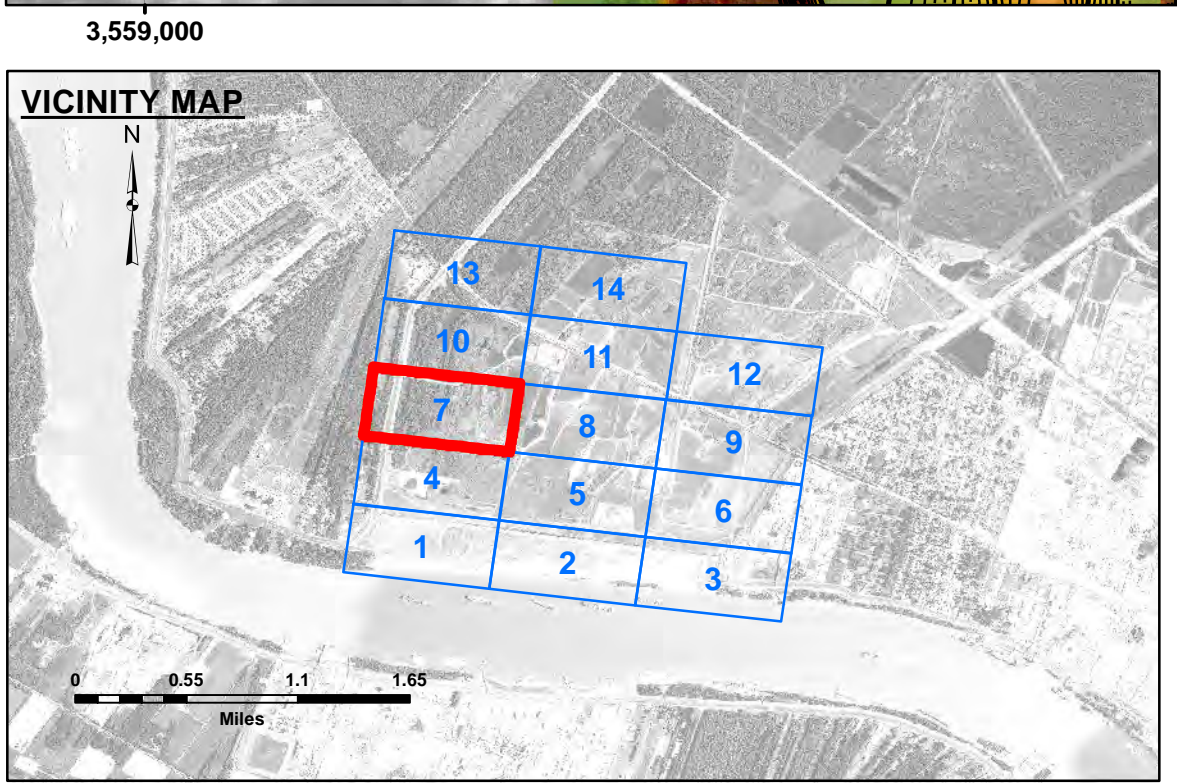
3,562,000

551,000

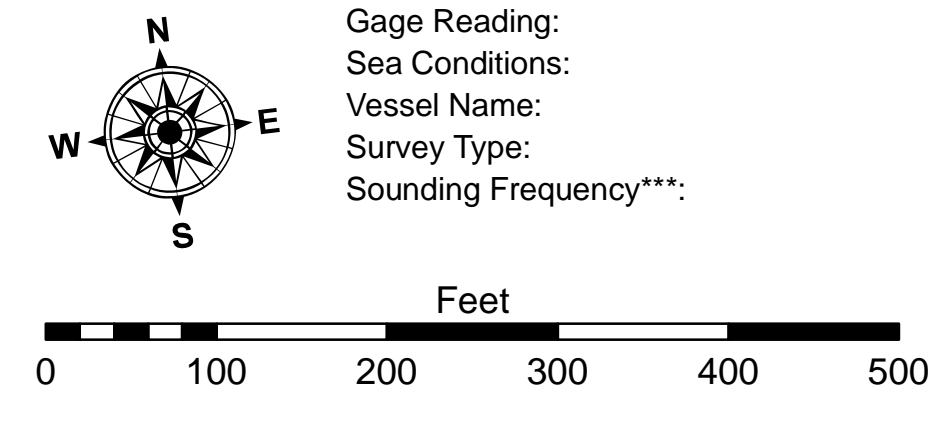
3,559,000



551,000



LEGEND		
--- Federal Navigation Channel	○ Cable Area	■ Shoaling Area
— Federal Navigation Center Line	□ Placement Area	● Shoalest Sounding**
— As-built Pipeline/Cable	□ Anchorage Area	★ Beacon, General
..... Unconfirmed Pipeline/Cable	⊗ Obstruction Point	◆ Red Navigation Buoy
— Project Depth Contour	✶ Wrecks-Submerged	◆ Green Navigation Buoy



**NOTES:**  
 Horizontal Coordinate System:  
 North American Datum of 1983 (NAD83), projected to the State Plane Coordinate System (SPCS), Louisiana South Zone. Distance units in U.S. Survey Feet.  
 Vertical Datum:  
 Elevations are shown in feet relative to NAVD88.  
 Distances on the Mississippi River, above and below Head of Passes are shown at 1 mile intervals.  
 The location of navigation aids are base on and provided by the U.S. Coast Guard and USACE crew.  
 2019 Aerial Photography data source: ED-SS  
 Reference is N.O.A. Navigation Chart No. 11370.  
 \*\* Shoalest Sounding per Quarter per Reach.  
 \*\*\* High frequency (200 kHz) survey data represents the first signal return at a sounding location and will include suspended solids, known as "fluff", if present. Low frequency (20 kHz) survey data normally penetrates through this "fluff" layer to depict elevations of consolidated bottom material. Low frequency accuracies may vary depending on channel conditions and fathometer settings.

U.S. ARMY CORPS OF ENGINEERS NEW ORLEANS DISTRICT	
Submitted:	Surveyed By: SURVEY_CREW
Recommended: Chief, Survey Section	Plotted By: PLOTTED_BY
Approved:	Checked By: CHECKED_BY

**BONNET CARRE SPILLWAY  
 POST 2019 FLOOD SEDIMENTATION  
 1" ORTHO / 0.5' CONTOUR RES  
 UNMANNED AERIAL SURVEY**

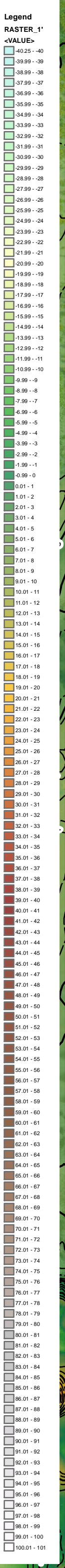
**Sheet  
 Reference  
 Number  
 7 of 14**

Revision Number:  
 2.1.0 Dv 2013023

**ACCESS NOTES**  
 These data and the recipient accepts and uses them with the express understanding that the data is provided for informational purposes only. It is not intended for use in any other manner. The user is responsible for the results of any application of the data for other than its intended purpose.  
 Data Constraints: Hydrographic survey data is subject to change rapidly due to several factors including but not limited to changing bathymetry, sedimentation, and other factors. The user is responsible for the results of any application of the data for other than its intended purpose.  
 Distribution Liability: The data represents the results of data collection/processing for a specific US Army Corps of Engineers project. It is only valid for its intended use, content, time and accuracy specifications. The user is responsible for the results of any application of the data for other than its intended purpose.  
 The information depicted on this map represents the results of a survey conducted on the date of the survey. It is not intended to represent the general condition existing at that time.







**Access Constraints:** The United States Government furnishes these data and the recipient accepts and uses them with the express understanding that the data are not to be used for any purpose other than that for which they were originally collected, and that the data are not to be used for any purpose other than that for which they were originally collected.

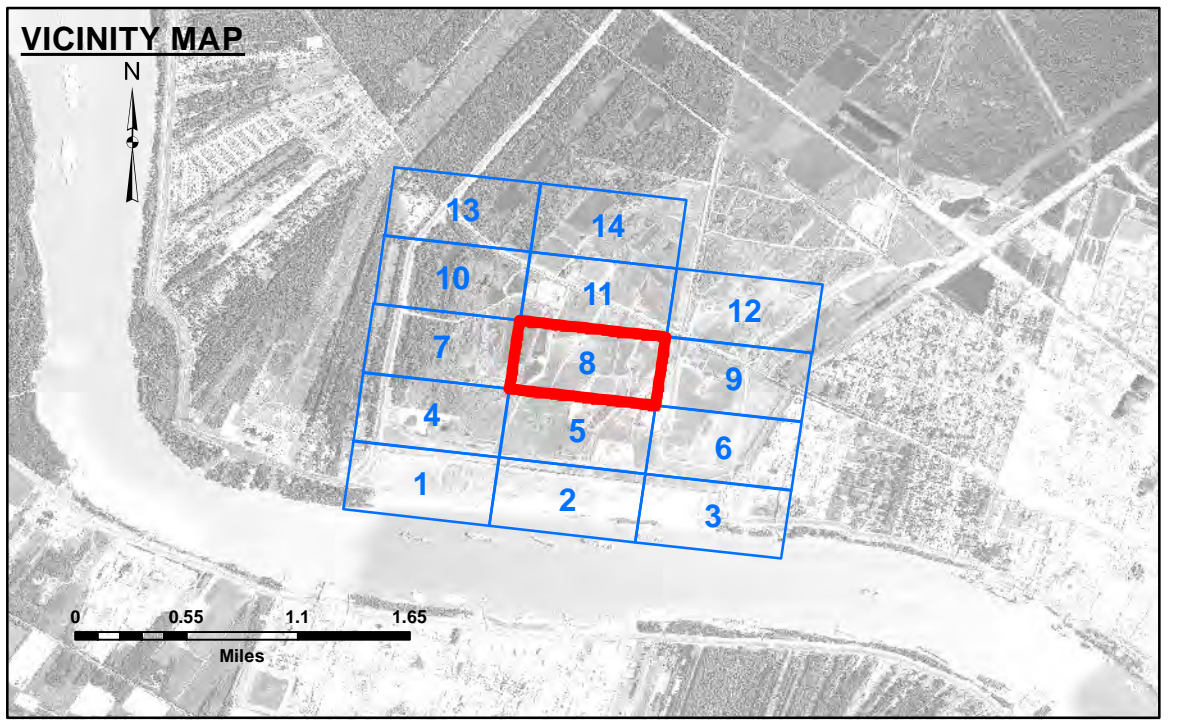
**Distribution Liability:** The data represents the results of data collection/processing for a specific US Army Corps of Engineers project. It is only valid for its intended use, content, time and accuracy specifications. The user is responsible for the results of any use of the data for other than its intended purpose. The application of the data for other than its intended purpose is at the user's risk.

**Data Constraints:** Hydrographic survey data is subject to change rapidly due to several factors including but not limited to changing hydrographic conditions when developing after the date of the survey. The US Army Corps of Engineers accepts no responsibility for changes in the hydrographic conditions when developing after the date of the survey. The information depicted on this map represents the results of a survey conducted at the time of the survey and is not to be considered to represent the general condition existing at that time.

U.S. ARMY CORPS OF ENGINEERS NEW ORLEANS DISTRICT	
Submitted:	Surveyed By: SURVEY_CREW
Recommended:	Plotted By: PLOTTED_BY
Approved:	Checked By: CHECKED_BY

**BONNET CARRE SPILLWAY  
POST 2019 FLOOD SEDIMENTATION  
1" ORTHO / 0.5' CONTOUR RES  
UNMANNED AERIAL SURVEY**

**Sheet  
Reference  
Number  
8 of 14**



**LEGEND**

--- Federal Navigation Channel	○ Cable Area	■ Shoaling Area
— Federal Navigation Center Line	□ Placement Area	● Shoalest Sounding**
— As-built Pipeline/Cable	□ Anchorage Area	★ Beacon, General
..... Unconfirmed Pipeline/Cable	⊗ Obstruction Point	◆ Red Navigation Buoy
— Project Depth Contour	⚓ Wrecks-Submerged	◆ Green Navigation Buoy

Compass rose showing North (N), South (S), East (E), and West (W).

Scale bar in Feet: 0, 100, 200, 300, 400, 500.

LWRP:  
Gage Reading:  
Sea Conditions:  
Vessel Name:  
Survey Type:  
Sounding Frequency\*\*\*:

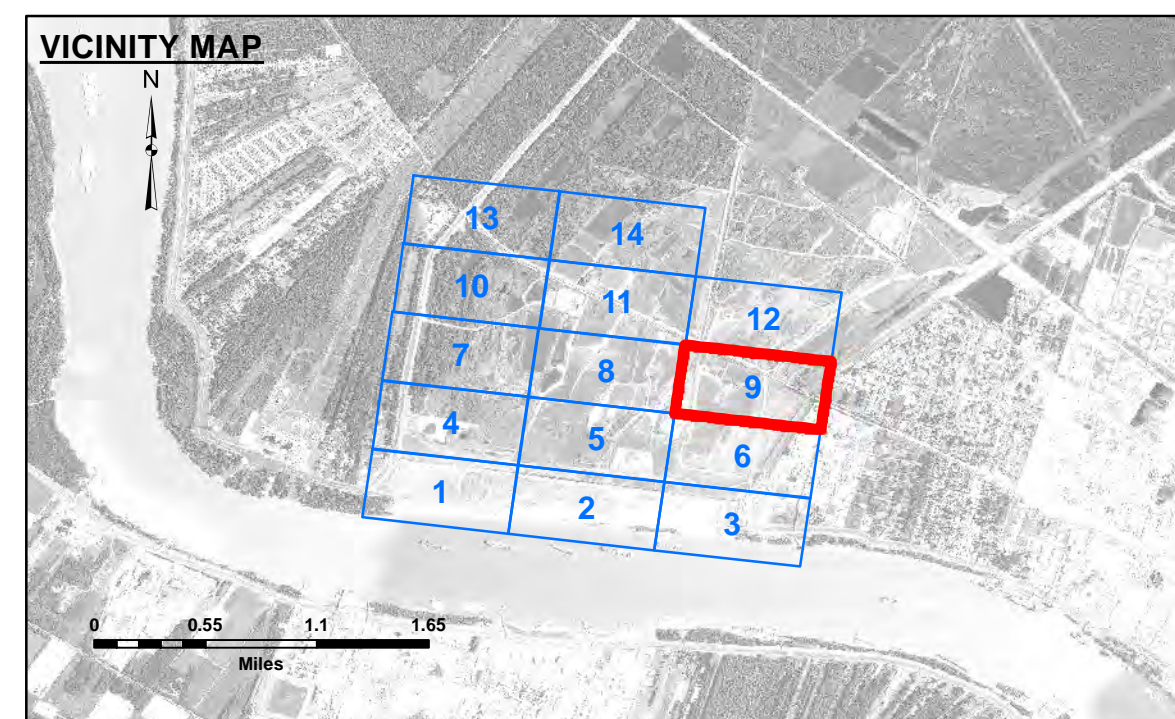
**NOTES:**  
Horizontal Coordinate System:  
North American Datum of 1983 (NAD83), projected to the State Plane Coordinate System (SPCS), Louisiana South Zone. Distance units in U.S. Survey Feet.

Vertical Datum:  
Elevations are shown in feet relative to NAVD88.

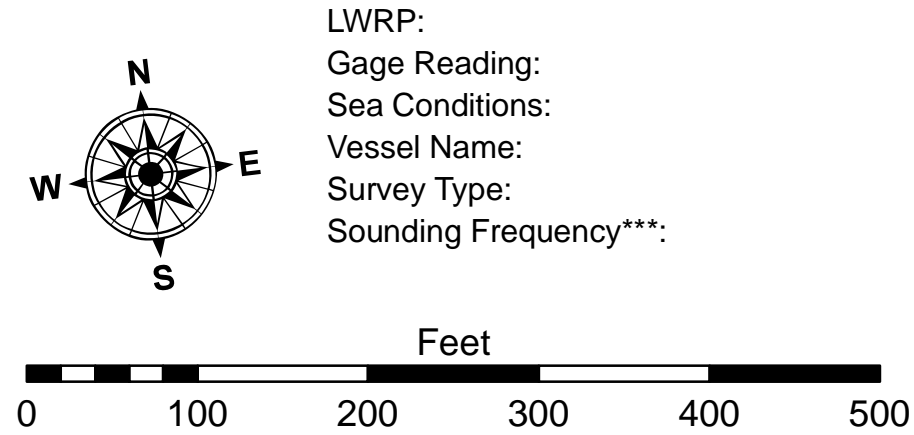
Distances on the Mississippi River, above and below Head of Passes are shown at 1 mile intervals.

The location of navigation aids are base on and provided by the U.S. Coast Guard and USACE crew.  
2019 Aerial Photography data source: ED-SS  
Reference is N.O.A. Navigation Chart No. 11370.  
\*\* Shoalest Sounding per Quarter per Reach.  
\*\*\* High frequency (200 kHz) survey data represents the first signal return at a sounding location and will include suspended solids, known as "fluff", if present. Low frequency (20 kHz) survey data normally penetrates through this "fluff" layer to depict elevations of consolidated bottom material. Low frequency accuracies may vary depending on channel conditions and fathometer settings.





LEGEND		
--- Federal Navigation Channel	○ Cable Area	■ Shoaling Area
— Federal Navigation Center Line	□ Placement Area	● Shoalest Sounding**
— As-built Pipeline/Cable	□ Anchorage Area	★ Beacon, General
..... Unconfirmed Pipeline/Cable	⊗ Obstruction Point	◆ Red Navigation Buoy
— Project Depth Contour	✈ Wrecks-Submerged	◆ Green Navigation Buoy



**NOTES:**  
 Horizontal Coordinate System:  
 North American Datum of 1983 (NAD83), projected to the State Plane Coordinate System (SPCS), Louisiana South Zone. Distance units in U.S. Survey Feet.  
 Vertical Datum:  
 Elevations are shown in feet relative to NAVD88.  
 Distances on the Mississippi River, above and below Head of Passes are shown at 1 mile intervals.  
 The location of navigation aids are base on and provided by the U.S. Coast Guard and USACE crew.  
 2019 Aerial Photography data source: ED-SS  
 Reference is N.O.A. Navigation Chart No. 11370.  
 \*\* Shoalest Sounding per Quarter per Reach.  
 \*\*\* High frequency (200 kHz) survey data represents the first signal return at a sounding location and will include suspended solids, known as "fluff", if present. Low frequency (20 kHz) survey data normally penetrates through this "fluff" layer to depict elevations of consolidated bottom material. Low frequency accuracies may vary depending on channel conditions and fathometer settings.

U.S. ARMY CORPS OF ENGINEERS NEW ORLEANS DISTRICT	
Submitted:	Surveyed By: SURVEY_CREW
Recommender: Chief, Survey Section	Plotted By: PLOTTED_BY
Approved:	Checked By: CHECKED_BY

**BONNET CARRE SPILLWAY  
 POST 2019 FLOOD SEDIMENTATION  
 1" ORTHO / 0.5' CONTOUR RES  
 UNMANNED AERIAL SURVEY**

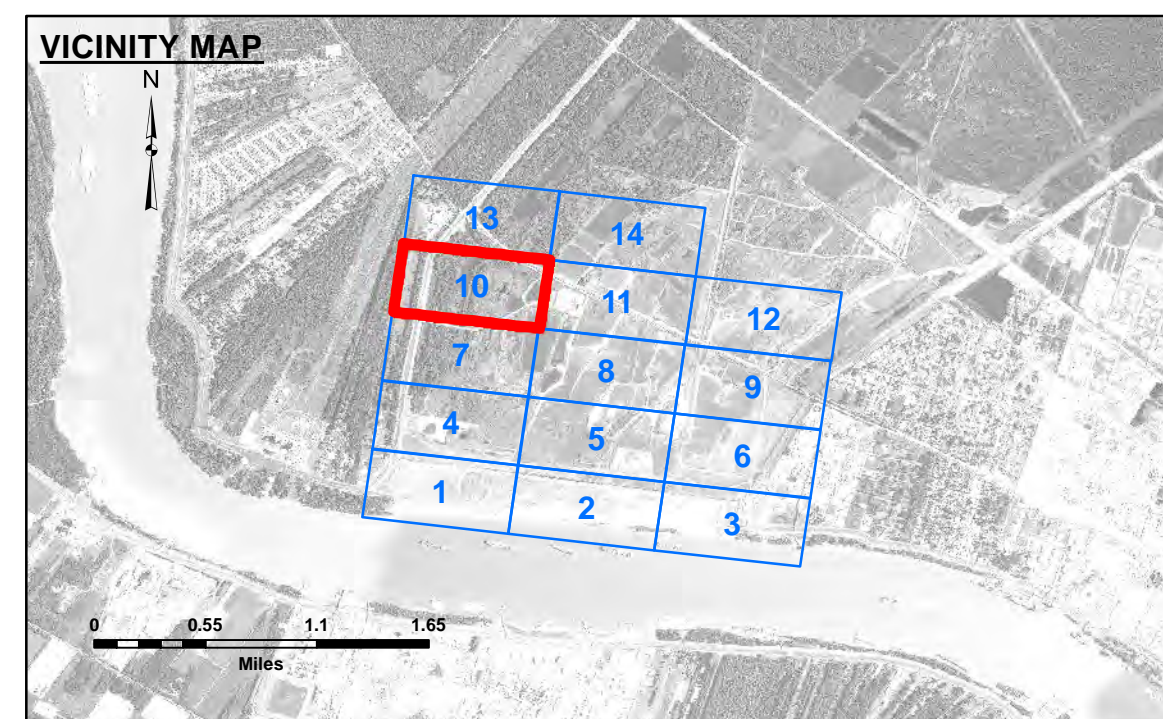
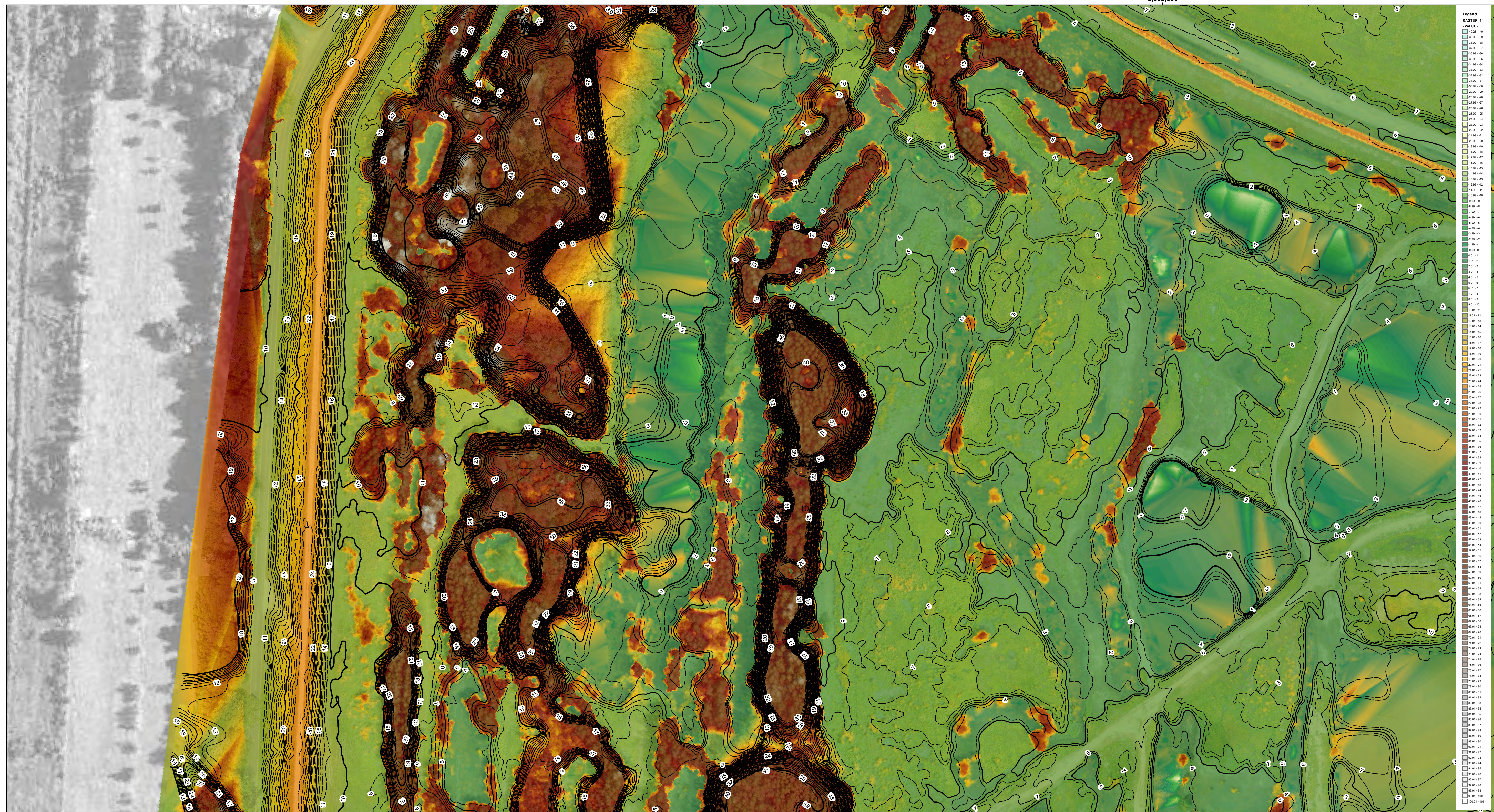
**Sheet  
 Reference  
 Number  
 9 of 14**

Revision Number:  
 2.1.0 Dv: 20130823



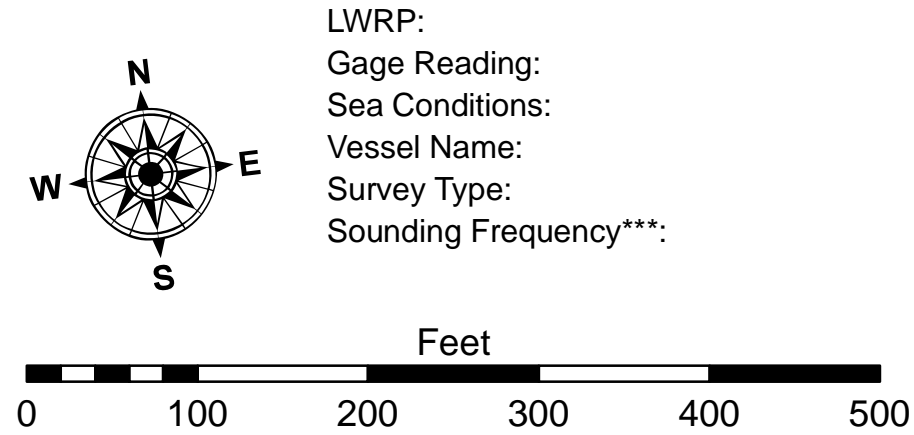
**DISCLAIMER:**  
 Access Constraints: The United States Government furnishes these data and the recipient accepts and uses them with the express understanding that the data are not to be used for any purpose other than that for which they were provided, and that the data are not to be used for any purpose other than that for which they were provided. The user is responsible for the results of any use of the data for any purpose other than that for which they were provided. The user is responsible for the results of any use of the data for any purpose other than that for which they were provided. The user is responsible for the results of any use of the data for any purpose other than that for which they were provided.  
 Distribution Liability: The data represents the results of data collection/processing for a specific US Army Corps of Engineers project. The data is not to be used for any purpose other than that for which it was collected/processed. The user is responsible for the results of any use of the data for any purpose other than that for which it was collected/processed. The user is responsible for the results of any use of the data for any purpose other than that for which it was collected/processed.  
 Data Constraints: Hydrographic survey data is subject to change rapidly due to several factors including but not limited to changing hydrographic conditions when developing after the date of the survey. The user is responsible for the results of any use of the data for any purpose other than that for which it was collected/processed. The user is responsible for the results of any use of the data for any purpose other than that for which it was collected/processed.  
 The information depicted on this map represents the results of a survey conducted on the date of the survey. The information is not to be used for any purpose other than that for which it was collected/processed. The user is responsible for the results of any use of the data for any purpose other than that for which it was collected/processed.





**LEGEND**

--- Federal Navigation Channel	○ Cable Area	■ Shoaling Area
— Federal Navigation Center Line	□ Placement Area	● Shoalest Sounding**
— As-built Pipeline/Cable	□ Anchorage Area	☆ Beacon, General
..... Unconfirmed Pipeline/Cable	⊗ Obstruction Point	◆ Red Navigation Buoy
— Project Depth Contour	⚓ Wrecks-Submerged	◆ Green Navigation Buoy



**NOTES:**  
 Horizontal Coordinate System:  
 North American Datum of 1983 (NAD83), projected to the State Plane Coordinate System (SPCS), Louisiana South Zone. Distance units in U.S. Survey Feet.  
 Vertical Datum:  
 Elevations are shown in feet relative to NAVD88.  
 Distances on the Mississippi River, above and below Head of Passes are shown at 1 mile intervals.  
 The location of navigation aids are base on and provided by the U.S. Coast Guard and USACE crew.  
 2019 Aerial Photography data source: ED-SS  
 Reference is N.O.A. Navigation Chart No. 11370.  
 \*\* Shoalest Sounding per Quarter per Reach.  
 \*\*\* High frequency (200 kHz) survey data represents the first signal return at a sounding location and will include suspended solids, known as "fluff", if present. Low frequency (20 kHz) survey data normally penetrates through this "fluff" layer to depict elevations of consolidated bottom material. Low frequency accuracies may vary depending on channel conditions and fathometer settings.

U.S. ARMY CORPS OF ENGINEERS  
 NEW ORLEANS DISTRICT

Submitted:	Surveyed By: SURVEY_CREW
Room/Desk: Chief, Survey Section	Plotted By: PLOTTED_BY
Approved:	Checked By: CHECKED_BY

Chief, Waterways Maintenance Section

**BONNET CARRE SPILLWAY  
 POST 2019 FLOOD SEDIMENTATION  
 1" ORTHO / 0.5' CONTOUR RES  
 UNMANNED AERIAL SURVEY**

**Sheet  
 Reference  
 Number  
 10 of 14**

Revision Number:  
 2.1.0 Dv 2013623



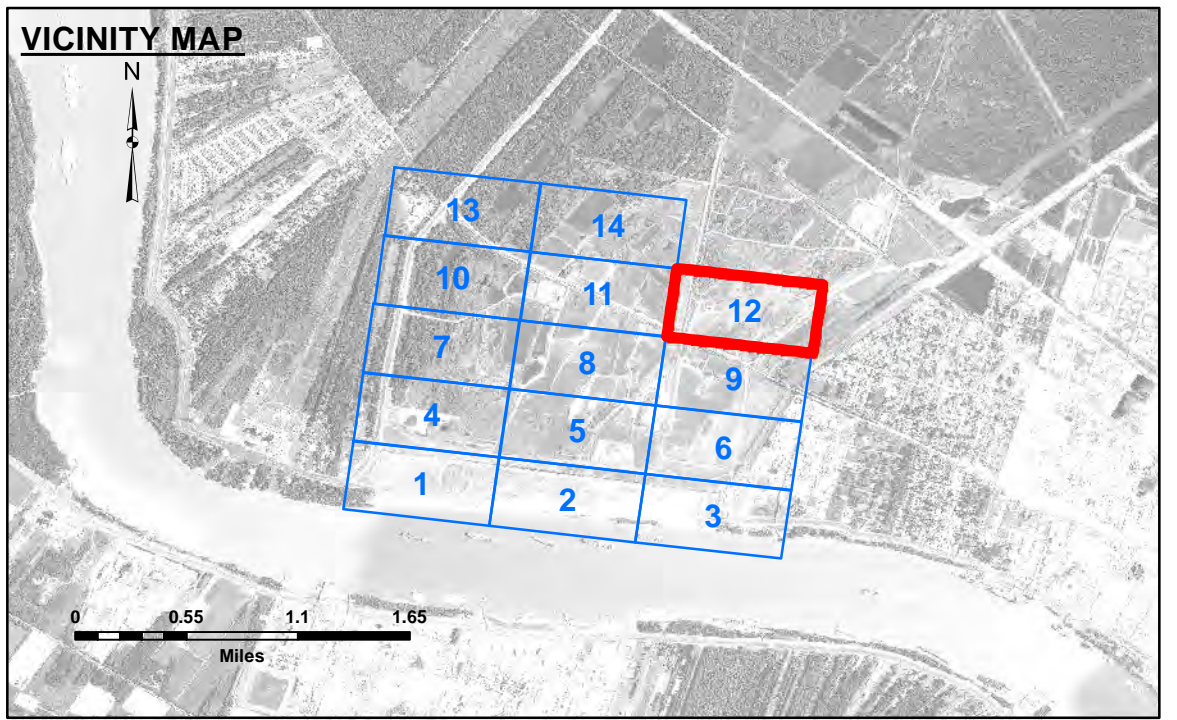
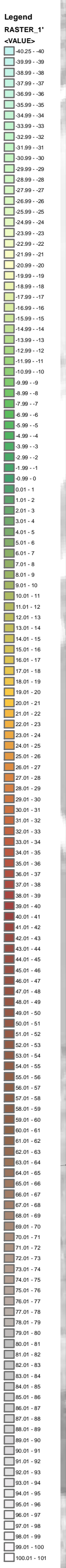
**DISCLAIMER:**  
 Access Constraints: The United States Government furnishes these data and the recipient accepts and uses them with the express understanding that the data are not to be used for any purpose other than that for which they were provided, and that the data are not to be used for any purpose other than that for which they were provided. The user is responsible for the results of any use of the data. The user is responsible for the results of any use of the data. The user is responsible for the results of any use of the data.  
 Distribution Liability: The data represents the results of data collection/processing for a specific US Army Corps of Engineers project. The data is not to be used for any purpose other than that for which it was collected. The user is responsible for the results of any use of the data. The user is responsible for the results of any use of the data. The user is responsible for the results of any use of the data.  
 Data Constraints: Hydrographic survey data is subject to change rapidly due to several factors including but not limited to changing bathymetry, sedimentation, and channel migration. The user is responsible for the results of any use of the data. The user is responsible for the results of any use of the data. The user is responsible for the results of any use of the data.  
 The information depicted on this map represents the results of a survey conducted on the date indicated. The user is responsible for the results of any use of the data. The user is responsible for the results of any use of the data. The user is responsible for the results of any use of the data.



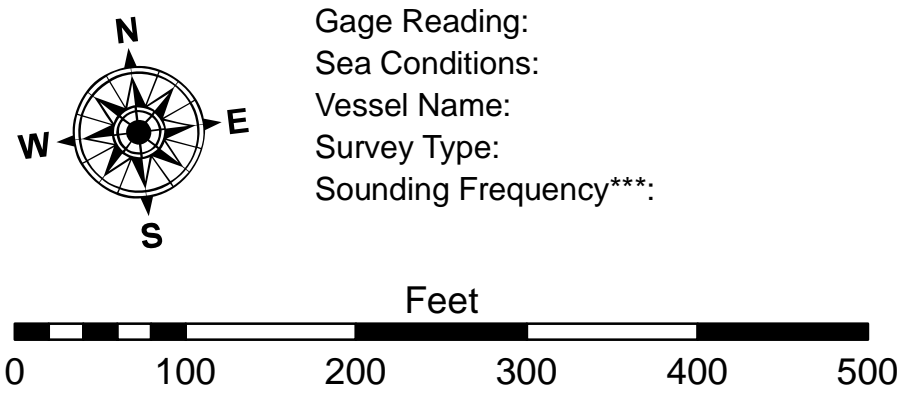




3,568,000



LEGEND		
--- Federal Navigation Channel	○ Cable Area	■ Shoaling Area
— Federal Navigation Center Line	□ Placement Area	● Shoalest Sounding**
— As-built Pipeline/Cable	⊠ Anchorage Area	★ Beacon, General
..... Unconfirmed Pipeline/Cable	⊗ Obstruction Point	◆ Red Navigation Buoy
— Project Depth Contour	✈ Wrecks-Submerged	◇ Green Navigation Buoy



**NOTES:**  
 Horizontal Coordinate System:  
 North American Datum of 1983 (NAD83), projected to the State Plane  
 Coordinate System (SPCS), Louisiana South Zone. Distance units in U.S. Survey Feet.  
 Vertical Datum:  
 Elevations are shown in feet relative to NAVD88.  
 Distances on the Mississippi River, above and below Head of Passes are shown  
 at 1 mile intervals.  
 The location of navigation aids are base on and provided by the U.S. Coast Guard and USACE crew.  
 2019 Aerial Photography data source: ED-SS  
 Reference is N.O.A. Navigation Chart No. 11370.  
 \*\* Shoalest Sounding per Quarter per Reach.  
 \*\*\* High frequency (200 kHz) survey data represents the first signal return at a sounding  
 location and will include suspended solids, known as "fluff", if present. Low frequency (20 kHz)  
 survey data normally penetrates through this "fluff" layer to depict elevations of consolidated bottom  
 material. Low frequency accuracies may vary depending on channel conditions and fathometer  
 settings.

U.S. ARMY CORPS OF ENGINEERS NEW ORLEANS DISTRICT	
Submitted:	Surveyed By: SURVEY_CREW
Recommended: Chief, Survey Section	Plotted By: PLOTTED_BY
Approved:	Checked By: CHECKED_BY

**BONNET CARRE SPILLWAY  
 POST 2019 FLOOD SEDIMENTATION  
 1" ORTHO / 0.5' CONTOUR RES  
 UNMANNED AERIAL SURVEY**

**Sheet  
 Reference  
 Number  
 12 of 14**

Revision Number:  
 2.1.0 Dv: 20130823



**DISCLAIMER:**  
 The United States Government furnishes these data and the recipient accepts and uses them with the express understanding that the data are not warranted for any purpose other than that for which they were prepared, and that the user is responsible for the results obtained. The user is responsible for the results obtained. The user is responsible for the results obtained. The user is responsible for the results obtained.  
 Distribution Liability: The data represents the results of data collection/processing for a specific US Army Corps of Engineers project. The data is not warranted for any purpose other than that for which it was prepared. The user is responsible for the results obtained. The user is responsible for the results obtained. The user is responsible for the results obtained.  
 Data Collection: Hydrographic survey data is subject to change rapidly due to several factors including but not limited to changing hydrographic conditions when developing the data of the project. The user is responsible for the results obtained. The user is responsible for the results obtained. The user is responsible for the results obtained.





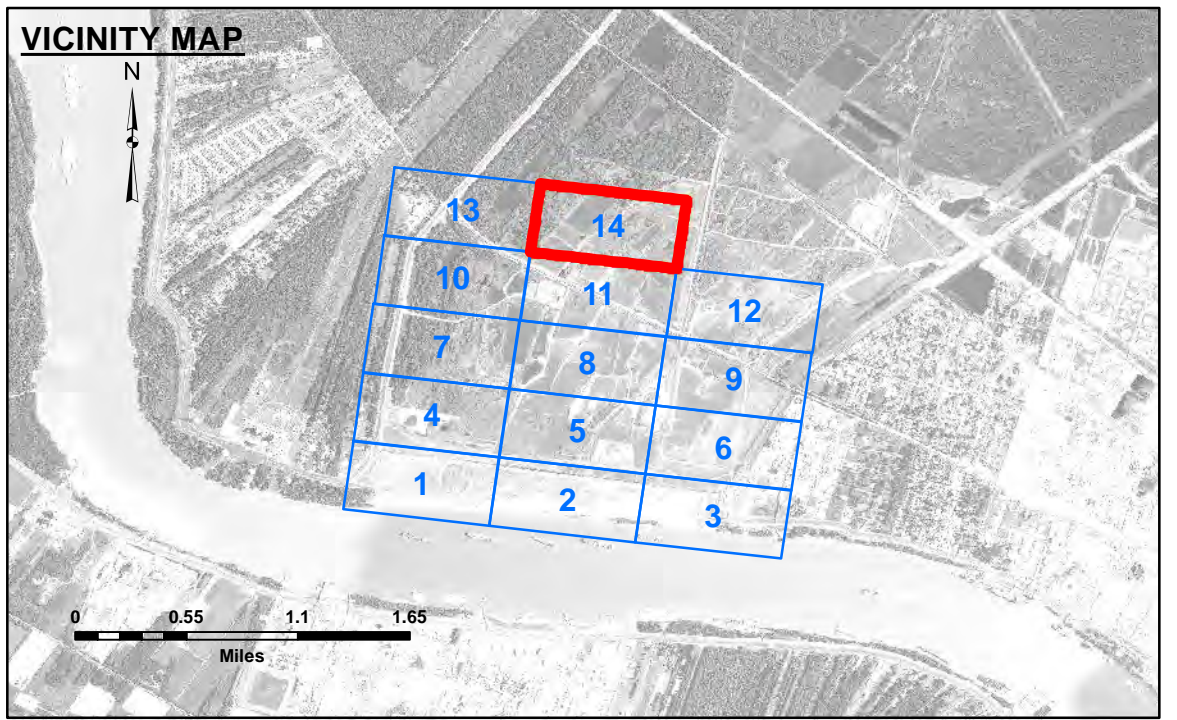


3,565,000

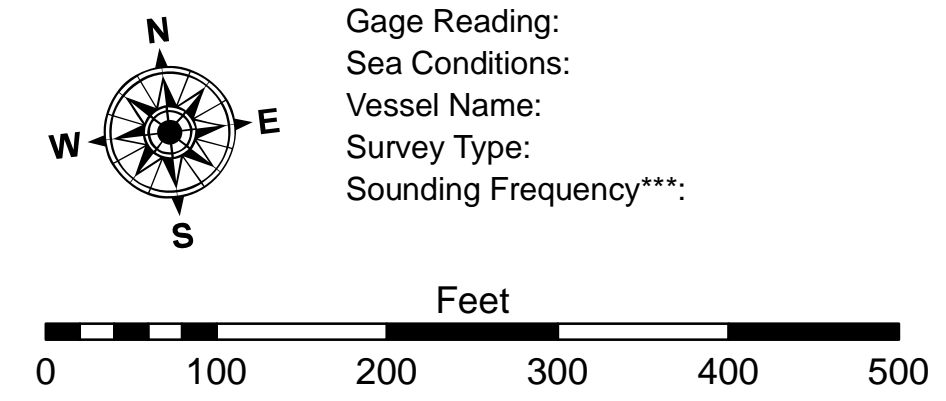


554,000

554,000



LEGEND		
--- Federal Navigation Channel	○ Cable Area	■ Shoaling Area
— Federal Navigation Center Line	□ Placement Area	● Shoalest Sounding**
— As-built Pipeline/Cable	⊠ Anchorage Area	★ Beacon, General
..... Unconfirmed Pipeline/Cable	⊗ Obstruction Point	◆ Red Navigation Buoy
— Project Depth Contour	✈ Wrecks-Submerged	◇ Green Navigation Buoy



LWRP:  
Gage Reading:  
Sea Conditions:  
Vessel Name:  
Survey Type:  
Sounding Frequency\*\*\*:

**NOTES:**  
Horizontal Coordinate System:  
North American Datum of 1983 (NAD83), projected to the State Plane Coordinate System (SPCS), Louisiana South Zone. Distance units in U.S. Survey Feet.  
  
Vertical Datum:  
Elevations are shown in feet relative to NAVD88.  
  
Distances on the Mississippi River, above and below Head of Passes are shown at 1 mile intervals.  
  
The location of navigation aids are base on and provided by the U.S. Coast Guard and USACE crew.  
2019 Aerial Photography data source: ED-SS  
Reference is N.O.A.A. Navigation Chart No. 11370.  
\*\* Shoalest Sounding per Quarter per Reach.  
\*\*\* High frequency (200 kHz) survey data represents the first signal return at a sounding location and will include suspended solids, known as "fluff", if present. Low frequency (20 kHz) survey data normally penetrates through this "fluff" layer to depict elevations of consolidated bottom material. Low frequency accuracies may vary depending on channel conditions and fathometer settings.

U.S. ARMY CORPS OF ENGINEERS NEW ORLEANS DISTRICT	
Submitted:	Surveyed By: SURVEY_CREW
Recommended: Chief, Survey Section	Plotted By: PLOTTED_BY
Approved:	Checked By: CHECKED_BY

**BONNET CARRE SPILLWAY  
POST 2019 FLOOD SEDIMENTATION  
1" ORTHO / 0.5' CONTOUR RES  
UNMANNED AERIAL SURVEY**

**Sheet  
Reference  
Number  
14 of 14**

Revision Number:  
2.1.0.Dv 2013/8/23



**DISCLAIMER:**  
The United States Government furnishes these data and the recipient accepts and uses them with the express understanding that the data are not warranted for any purpose other than that for which they were collected. The user is responsible for the results of any application of the data for other than its intended purpose.  
  
Data Constraints: Hydrographic survey data is subject to change rapidly due to several factors including but not limited to changing bathymetry, sedimentation, and channel migration. The Army Corps of Engineers accepts no responsibility for changes in the hydrographical conditions when developed after the date of the survey. The user is responsible for the accuracy of the data. The Army Corps of Engineers does not warrant the accuracy of the data for internal use. Product maintainers should not rely solely upon it.