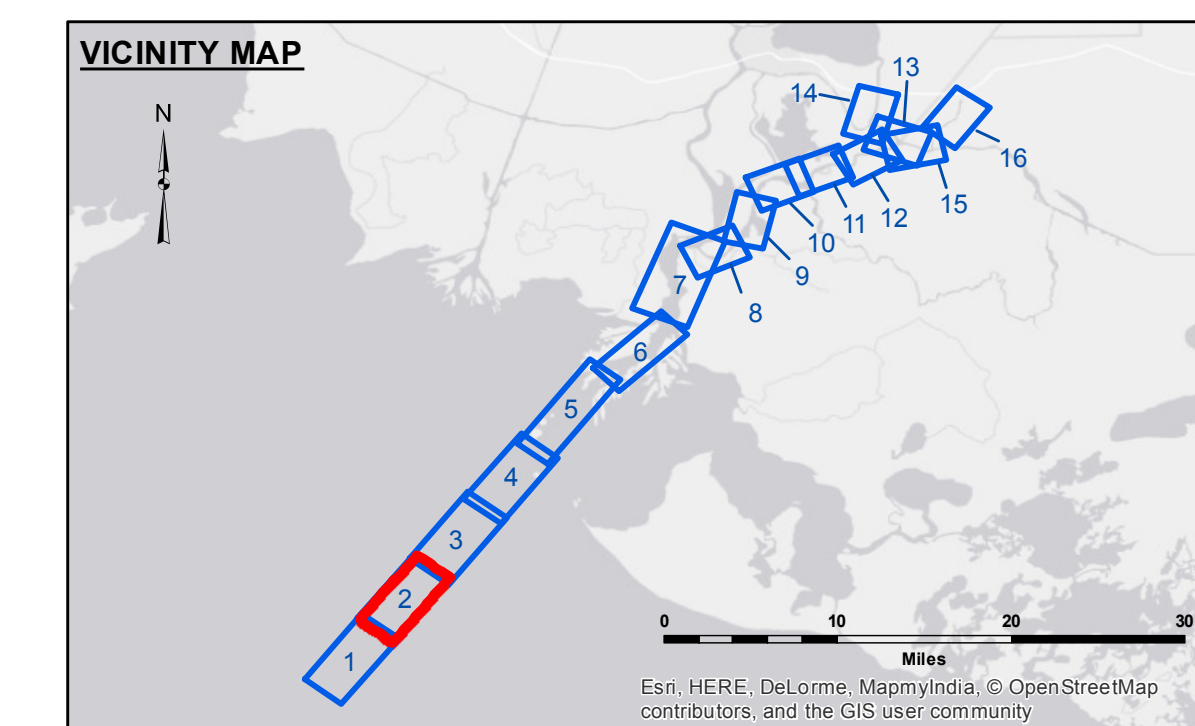
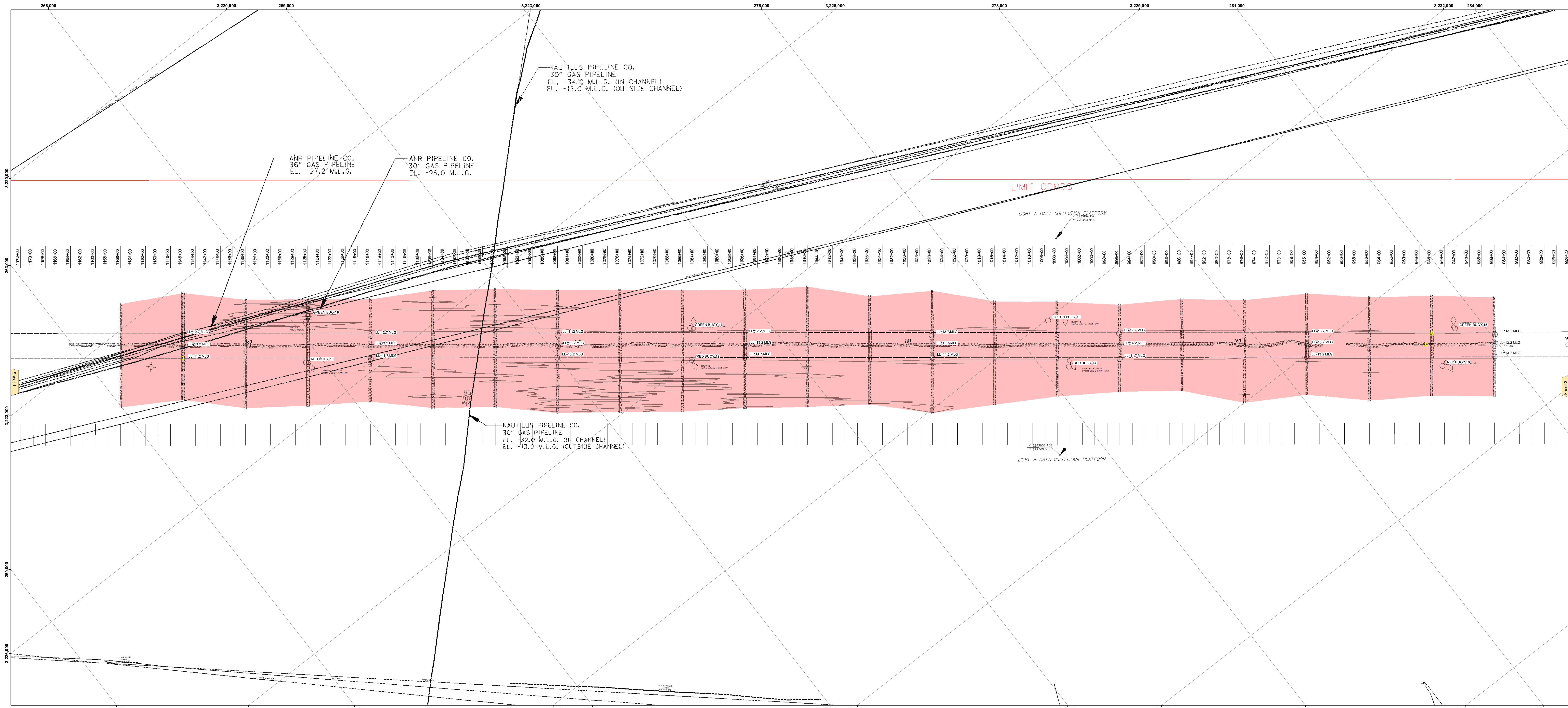


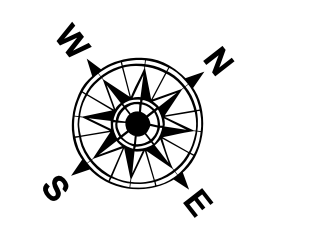


US Army Corps of Engineers District: CEMVN

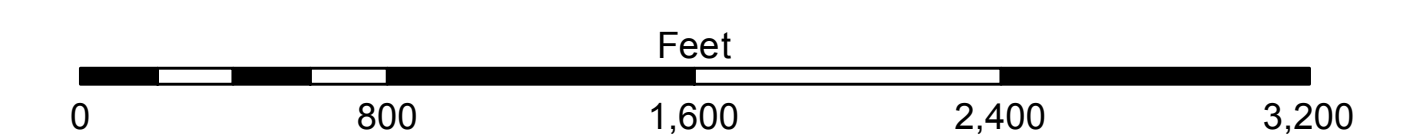


**LEGEND**

--- Federal Navigation Channel	--- Cable Area	□ Borrow Area	■ -15' and above
— Federal Navigation Center Line	■ Placement Area	● Shoalest Sounding**	■ -15' to -20'
— As-built Pipeline/Cable	□ Anchorage Area	★ Beacon, General	■ -20' and below
..... Unconfirmed Pipeline/Cable	⊗ Obstruction Point	◆ Red Navigation Buoy	3 Fluff Thickness*
— Project Depth Contour	⚓ Wrecks-Submerged	◆ Green Navigation Buoy	



Gage Reading: EUGENE ISLAND: 2.3 MLG AVG  
 Sea Conditions: 1-3 FT.  
 Vessel Name: MV BURRWOOD  
 Survey Type: CONDITION  
 Sounding Frequency\*\*\*: LOW



**NOTES:**  
 Horizontal Coordinate System: North American Datum of 1983 (NAD83), projected to the State Plane Coordinate System (SPCS), Louisiana South Zone. Distance units in U.S. Survey Feet.  
 Vertical Datum: Soundings are shown in feet and indicate depths below Mean Low Gulf Datum (MLG). Datum Relationships for the gage 88600 as of August 2013: 0.07 NAVD83 = 0.01 MLLW = 1.5' MLG  
 Distances on the Atchafalaya River are shown at 1 mile intervals.  
 The location of navigation aids are based on and provided by the U.S. Coast Guard.  
 2013 Aerial Photography data source: GEOCLIP, Atlantic Group, LLC. (1998 DOQQ imagery in green).  
 Reference is N.O.A.A. Navigation Chart No. 11354.  
 \* Difference between high and low frequency elevations where greater than 1.0'.  
 \*\* Shoalest Sounding per Quarter per Reach.  
 \*\*\* High frequency (200 kHz) survey data represents the first signal return at a sounding location and will include suspended solids, known as "fluff", if present. Low frequency (20 kHz) survey data normally penetrates through this "fluff" layer to depict elevations of consolidated bottom material. Low frequency accuracies may vary depending on channel conditions and bathymetric settings.

**U.S. ARMY CORPS OF ENGINEERS**  
 NEW ORLEANS DISTRICT

Author: RYLAND/DAMS  
 Planner: AC  
 Checked: AN

**ATCHFALAYA RIVER**  
**BAR CHANNEL**  
**AR\_02\_BAR\_20160113**  
**13 January 2016**

**Sheet Reference Number**  
**2 of 16**

Revision Number: 3.8.2016.0202