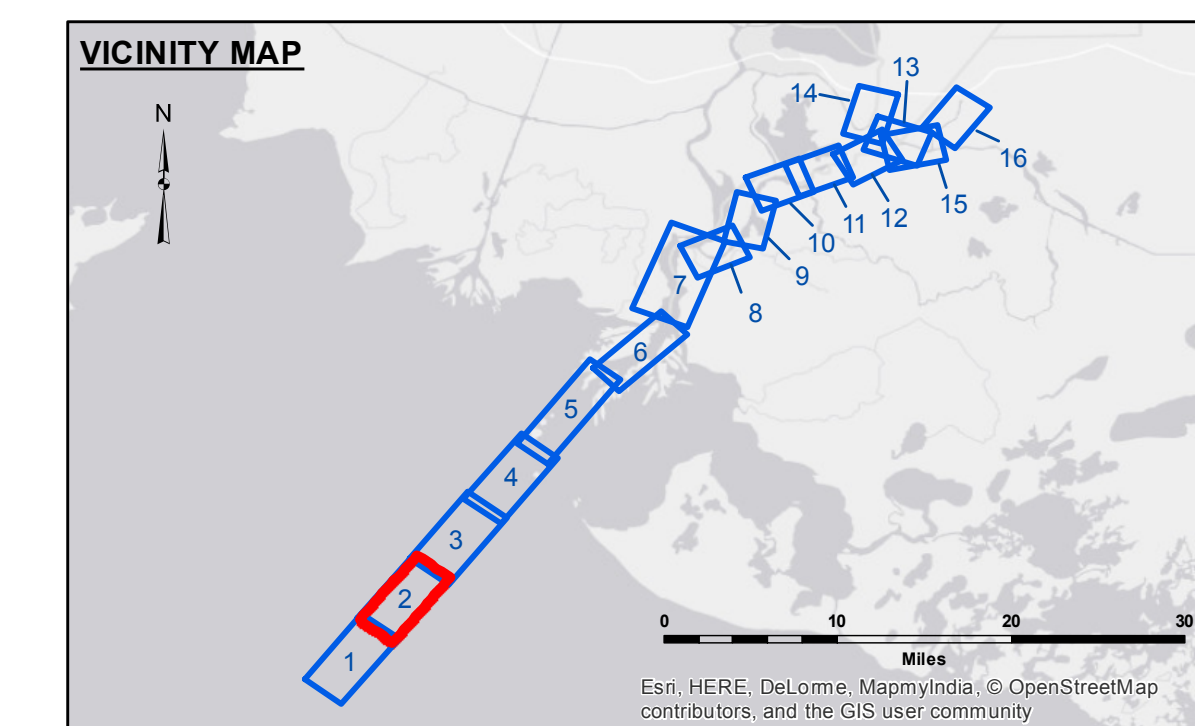
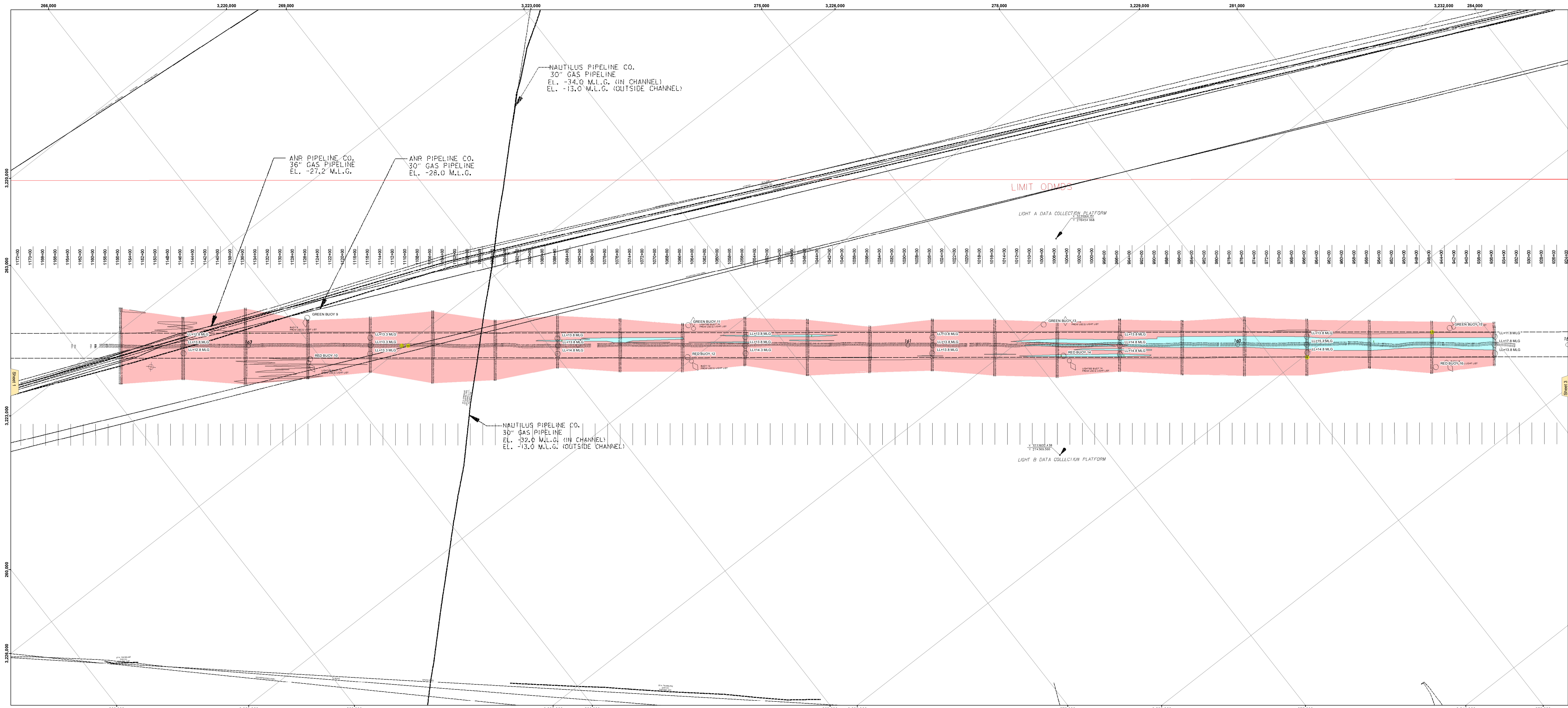


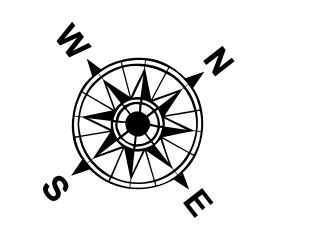


US Army Corps of Engineers District: CEMVN

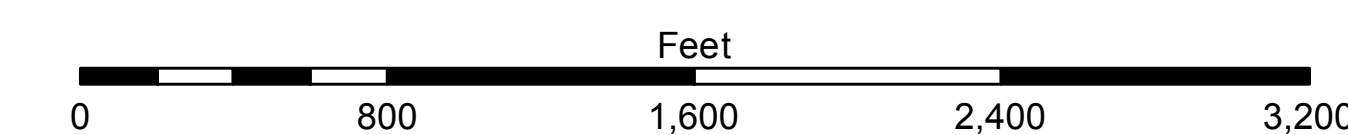


LEGEND

| | | | |
|----------------------------------|---------------------|-------------------------|--------------------|
| --- Federal Navigation Channel | --- Cable Area | □ Borrow Area | ■ -15' and above |
| — Federal Navigation Center Line | ■ Placement Area | ● Shoalest Sounding** | ■ -15' to -20' |
| — As-built Pipeline/Cable | □ Anchorage Area | ★ Beacon, General | ■ -20' and below |
| Unconfirmed Pipeline/Cable | ⊗ Obstruction Point | ◆ Red Navigation Buoy | 3 Fluff Thickness* |
| — Project Depth Contour | ⚓ Wrecks-Submerged | ◆ Green Navigation Buoy | |



Gage Reading: EUGINE ISLAND: 2.23 MLG
 Sea Conditions: CALM
 Vessel Name: M/V BURRWOOD
 Survey Type: CONDITION
 Sounding Frequency***: LOW



NOTES:
 Horizontal Coordinate System: North American Datum of 1983 (NAD83), projected to the State Plane Coordinate System (SPCS), Louisiana South Zone. Distance units in U.S. Survey Feet.
 Vertical Datum: Soundings are shown in feet and indicate depths below Mean Low Gulf Datum (MLG). Datum Relationships for the gage 88600 as of August 2013: 0.07 NAVD83 = 0.01 MLLW = 1.5' MLG
 Distances on the Atchafalaya River are shown at 1 mile intervals.
 The location of navigation aids are based on and provided by the U.S. Coast Guard.
 2013 Aerial Photography data source: GEOCLIP, Atlantic Group, LLC. (1998 DOQQ imagery in green).
 Reference is N.O.A.A. Navigation Chart No. 11354.
 * Difference between high and low frequency elevations where greater than 1.0'.
 ** Shoalest Sounding per Quarter per Reach.
 *** High frequency (200 kHz) survey data represents the first signal return at a sounding location and will include suspended solids, known as "fluff", if present. Low frequency (20 kHz) survey data normally penetrates through this "fluff" layer to depict elevations of consolidated bottom material. Low frequency accuracies may vary depending on channel conditions and bathymetry settings.

DISCLAIMER: The United States Government neither endorses nor recommends the use of any product or service, nor makes any warranty, expressed or implied, with respect to the accuracy, reliability, or availability of the information provided herein. The user of the information provided herein is responsible for the application of the data for other than its intended purpose. Data obtained from hydrographic survey data is subject to change and is not intended to be used for navigation purposes. The U.S. Army Corps of Engineers is not responsible for any damage or loss resulting from the use of this information. For more information, contact the District Engineer, U.S. Army Corps of Engineers, New Orleans District, 1717 Poydras Street, New Orleans, LA 70112.

U.S. ARMY CORPS OF ENGINEERS
 NEW ORLEANS DISTRICT

| | |
|-------------|-----------|
| Author: | Engineer: |
| Checked: | DR/IA |
| Reviewed: | Planner: |
| Approved: | ID |
| Checked By: | AO |

**ATCHAFALAYA RIVER
 BAR CHANNEL
 AR_02_BAR_20161019
 19 October 2016**

**Sheet Reference Number
 2 of 16**

Revision Number:
 3.8.2016.0202