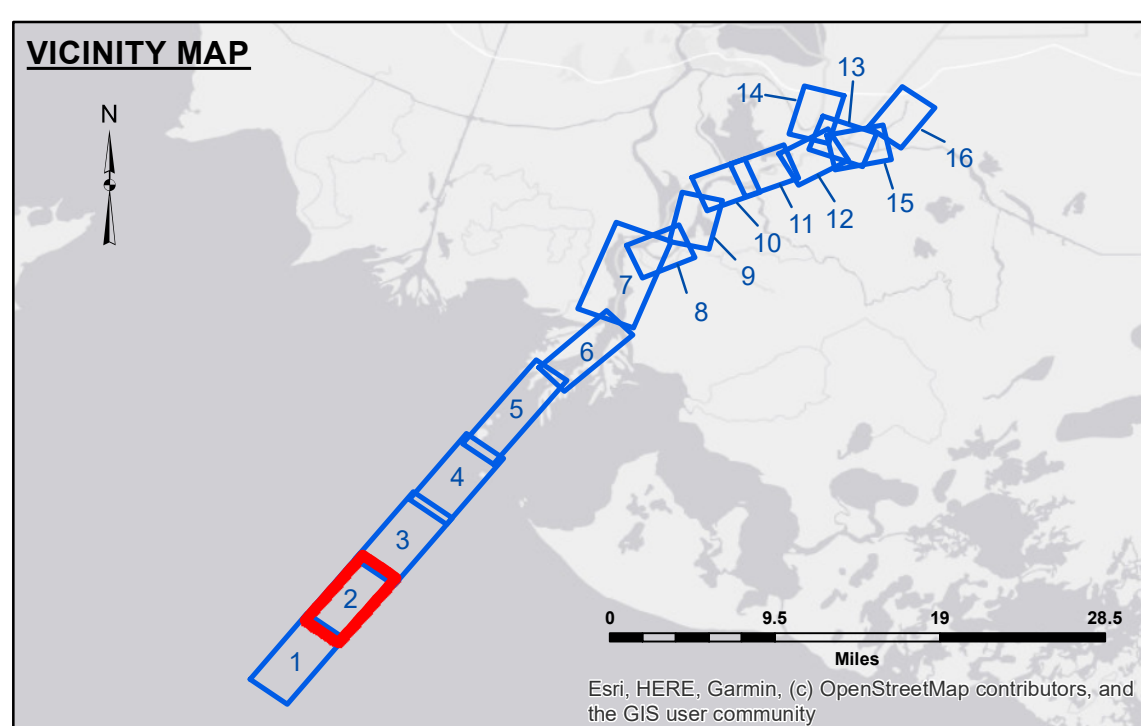


1) RHEOTUNE MEASUREMENTS PERFORMED AT: CENTER 30' WEST 60' WEST 90' WEST
2) MISSING ELEVATIONS RESULTING FROM PROBE NOT REACHING THE 1200 G/L HORIZON.



LEGEND table with symbols for Federal Navigation Channel, Cable Area, Borrow Area, Shoalest Sounding, Beacon, Red Navigation Buoy, Green Navigation Buoy, Placement Area, Anchorage Area, Obstruction Point, Wrecks-Submerged, and depth contours.

Notes and metadata including: 'This data was collected in cooperation with the Port of Morgan City...', 'Gauge Reading: EUGENE: 2.8 MLG AVG', 'Sea Conditions: CALM', 'Vessel Name: M/V VALENTOUR', 'Survey Type: CONDITION, RHEO', 'Sounding Frequency: ELEVATIONS OF 1200 g/L DENSITY', and a scale bar from 0 to 3,200 feet.

NOTES: Horizontal Coordinate System: North American Datum of 1983 (NAD83), projected to the State Plane Coordinate System (SPCS), Louisiana South Zone. Vertical Datum: Soundings are shown in feet and indicate depths below Mean Low Gulf Datum (MLG). Reference is N.O.A.A. Navigation Chart No. 11354.

Administrative and approval blocks including 'U.S. ARMY CORPS OF ENGINEERS NEW ORLEANS DISTRICT', 'Submitted By: JALDR/MS/CC', 'Reviewed By: AO', and 'Checked By: AO'. Includes a date stamp '07 February 2020'.

Sheet Reference Number: 2 of 16. Includes 'ATCHFALAYA RIVER BAR CHANNEL DENSITY SURVEY AR_02_DEN_20200207_CS' and '07 February 2020'.