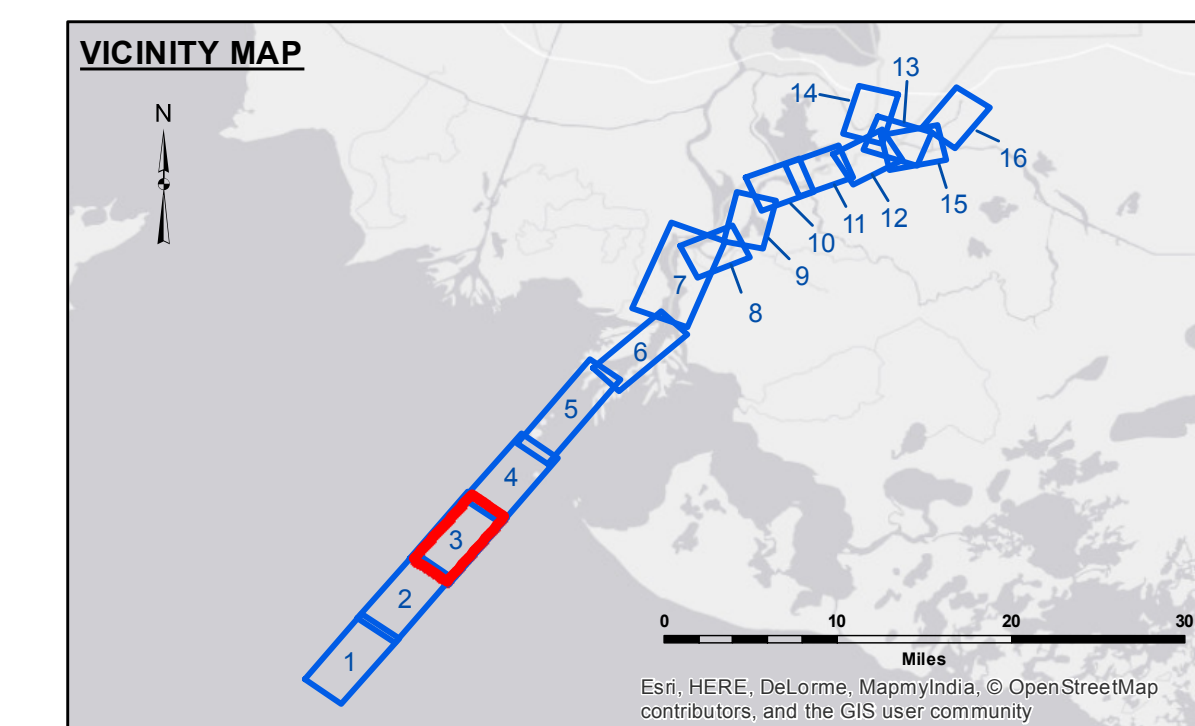
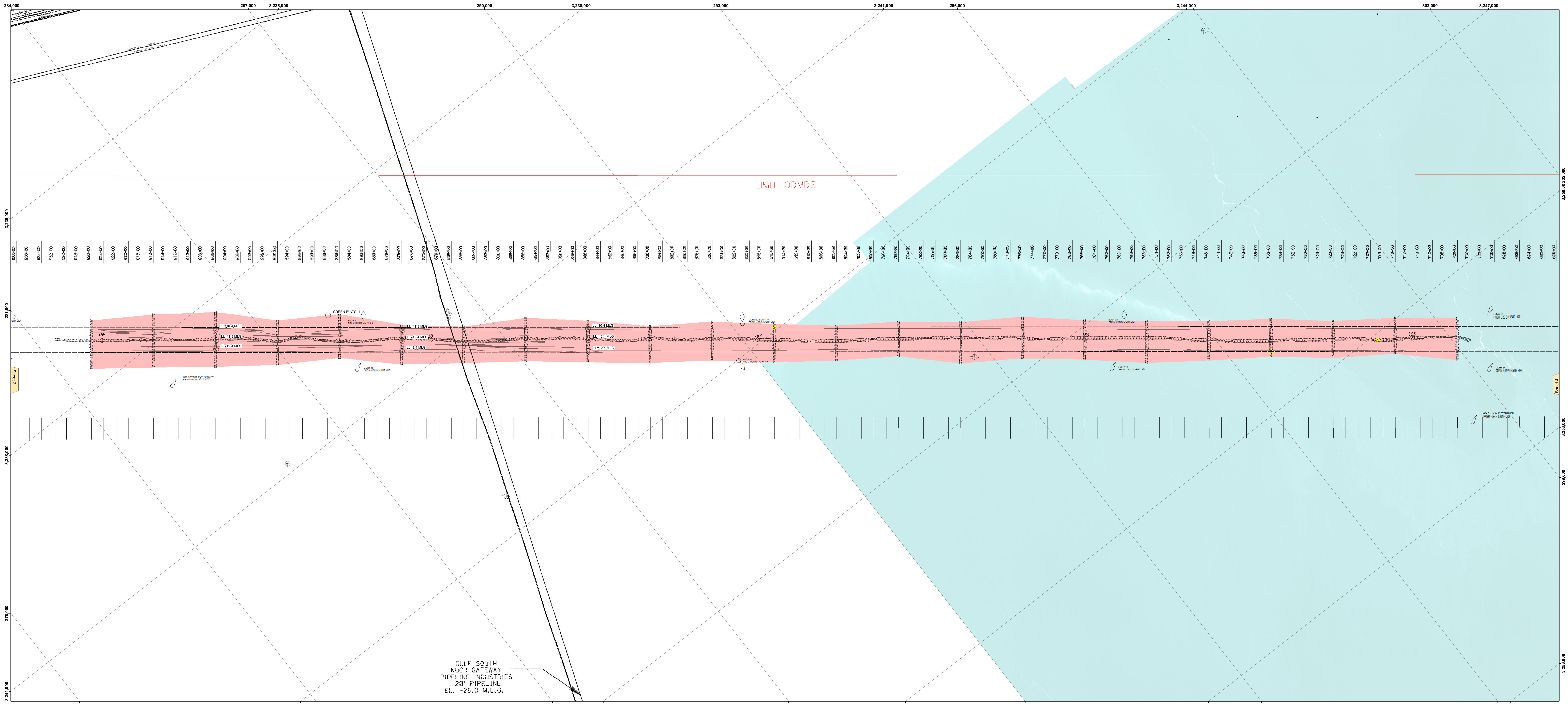


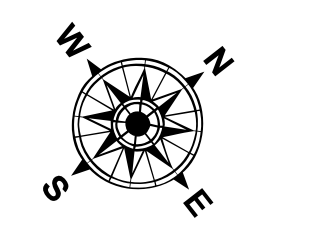


US Army Corps of Engineers
District: CEMVN

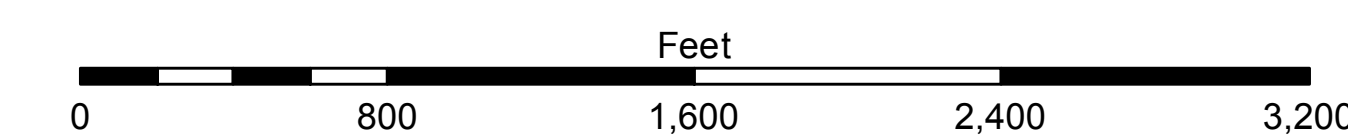


LEGEND

--- Federal Navigation Channel	--- Cable Area	□ Borrow Area	■ -15' and above
— Federal Navigation Center Line	■ Placement Area	● Shoalest Sounding**	■ -15' to -20'
— As-built Pipeline/Cable	□ Anchorage Area	★ Beacon, General	■ -20' and below
..... Unconfirmed Pipeline/Cable	⊗ Obstruction Point	◆ Red Navigation Buoy	3 Fluff Thickness*
— Project Depth Contour	⚓ Wrecks-Submerged	◆ Green Navigation Buoy	



Gage Reading: DM 33 (EUGENE); 2.6 MLG AVG
 Sea Conditions: 1-3 FT.
 Vessel Name: MV BURRWOOD
 Survey Type: CONDITION
 Sounding Frequency***: LOW



NOTES:
 Horizontal Coordinate System: North American Datum of 1983 (NAD83), projected to the State Plane Coordinate System (SPCS), Louisiana South Zone. Distance units in U.S. Survey Feet.
 Vertical Datum: Soundings are shown in feet and indicate depths below Mean Low Gulf Datum (MLG). Datum Relationships for the gage 88600 as of August 2013: 0.07 NAVD83 = 0.01 MLGW + 1.5' MLG
 The location of navigation aids are based on and provided by the U.S. Coast Guard.
 2013 Aerial Photography data source: GEOCLIP; Atlantic Group, LLC. (1998 DOQQ imagery in green).
 Reference is N.O.A.A. Navigation Chart No. 11354.
 * Difference between high and low frequency elevations where greater than 1.0'.
 ** Shoalest Sounding per Quarter per Reach.
 *** High frequency (200 kHz) survey data represents the first signal return at a sounding location and will include suspended solids, known as "fluff", if present. Low frequency (20 kHz) survey data normally penetrates through the "fluff" layer to depict elevations of consolidated bottom material. Low frequency accuracies may vary depending on channel conditions and bathymetric settings.

DISCLAIMER: The data presented in this chart is derived from the best available information and is not a guarantee of accuracy. The user assumes all responsibility for the use of this chart. The Corps of Engineers does not warrant the accuracy of the data for other than its intended purpose. Data obtained from hydrographic surveys is subject to change and is not a guarantee of accuracy. The Corps of Engineers is not responsible for any errors or omissions in this chart. The user assumes all responsibility for the use of this chart.

U.S. ARMY CORPS OF ENGINEERS
NEW ORLEANS DISTRICT

Author:	RYLAND/DAMS
Illustration:	AO
Checked By:	TC

**ATCHAFALAYA RIVER
 BAR CHANNEL
 AR_03_BAR_20160412
 12 April 2016**

**Sheet Reference
 Number
 3 of 16**