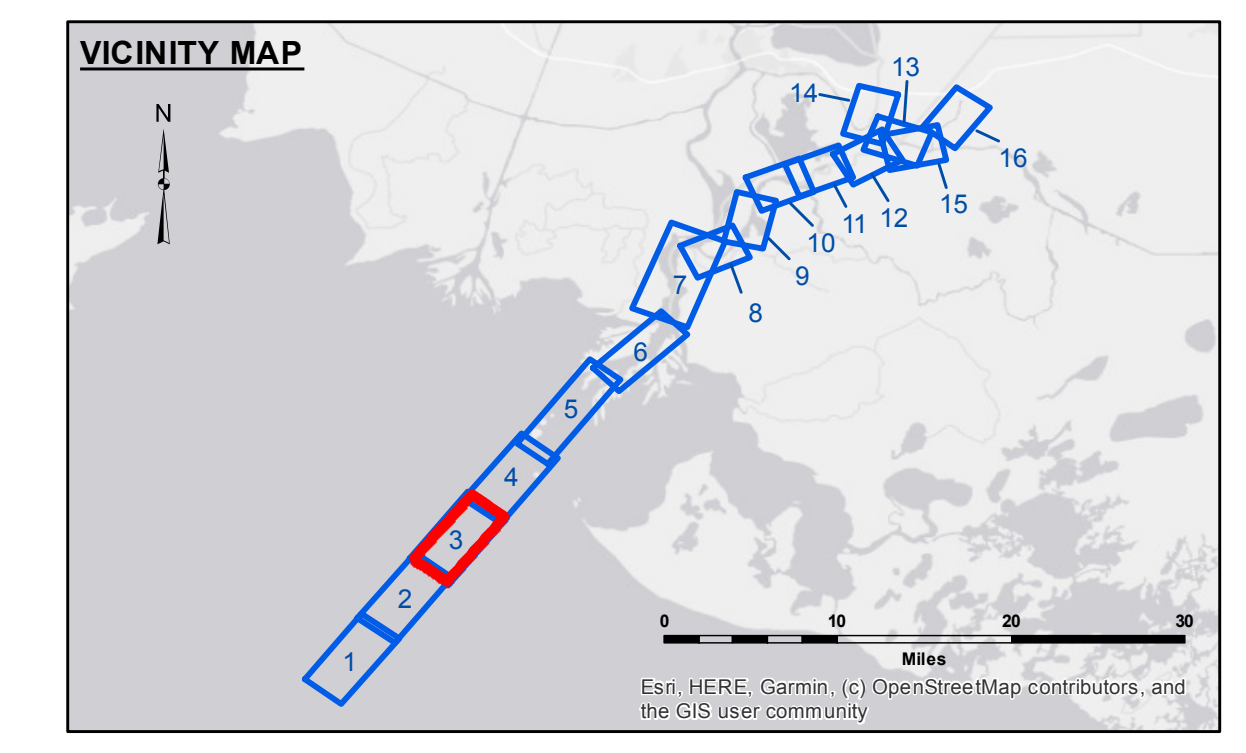
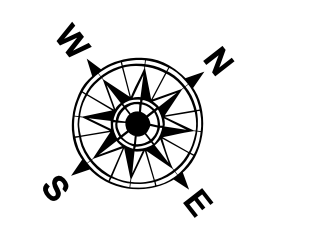


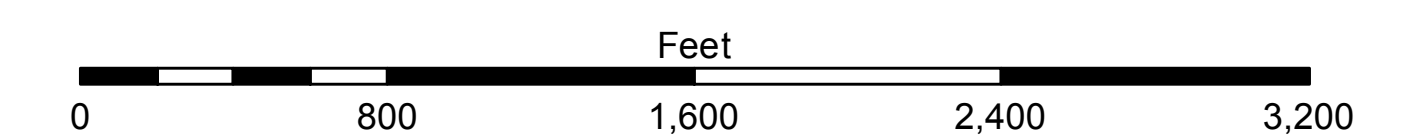
GULF SOUTH
KCOCH GATEWAY
PIPELINE INDUSTRIES
20" PIPELINE
EL. -28.0 M.L.G.



LEGEND	
	Federal Navigation Channel
	Federal Navigation Center Line
	As-built Pipeline/Cable
	Unconfirmed Pipeline/Cable
	Project Depth Contour
	Cable Area
	Placement Area
	Anchorage Area
	Obstruction Point
	Wrecks-Submerged
	Borrow Area
	Shoalest Sounding**
	Beacon, General
	Red Navigation Buoy
	Green Navigation Buoy
	-12' and above
	-12' to -15'
	-15' to -18'
	-18' to -20'
	-20' and below
	Fluff Thickness*



Gage Reading: EUGENE IS: 2.3 MLG AVG
 Sea Conditions: 1-3 FT.
 Vessel Name: MV VALENTOUR
 Survey Type: CONDITION
 Sounding Frequency**: LOW



NOTES:
 Horizontal Coordinate System:
 North American Datum of 1983 (NAD83), projected to the State Plane Coordinate System (SPCS), Louisiana South Zone. Distance units in U.S. Survey Feet.
 Vertical Datum:
 Soundings are shown in feet and indicate depths below Mean Low Gulf Datum (MLG).
 Datum Relationships for the gage 88600 as of August 2013:
 0.07 NAVD83 = 0.05 MLLW = 1.5' MLG
 Distances on the Atchafalaya River are shown at 1 mile intervals.
 The location of navigation aids are based on and provided by the U.S. Coast Guard.
 2013 Aerial Photography data source: GEOCLIP, Atlantic Group, LLC. (1998 DOQQ imagery in green).
 Reference is N.O.A.A. Navigation Chart No. 11354.
 * Difference between high and low frequency elevations where greater than 1.0'.
 ** Shoalest Sounding per Quarter per Reach.
 *** High frequency (200 kHz) survey data represents the first signal return at a sounding location and will include suspended solids, known as "fluff", if present. Low frequency (20 kHz) survey data normally penetrates through this "fluff" layer to depict elevations of consolidated bottom material. Low frequency accuracies may vary depending on channel conditions and bathymetry settings.

DISCLAIMER: The data shown on this chart was derived from the best available information at the time of publication. The data is provided for informational purposes only and is not intended to be used for navigation. The user assumes all responsibility for the accuracy and completeness of the data. The user assumes all responsibility for the accuracy and completeness of the data. The user assumes all responsibility for the accuracy and completeness of the data.

Submitted By:	RYLAND/DAMS
Reviewed By:	AO
Checked By:	AO
Approved By:	AO

**ATCHAFALAYA RIVER
 BAR CHANNEL
 AR_03_BAR_20200324_CS
 24 March 2020**

**Sheet Reference Number
 3 of 16**