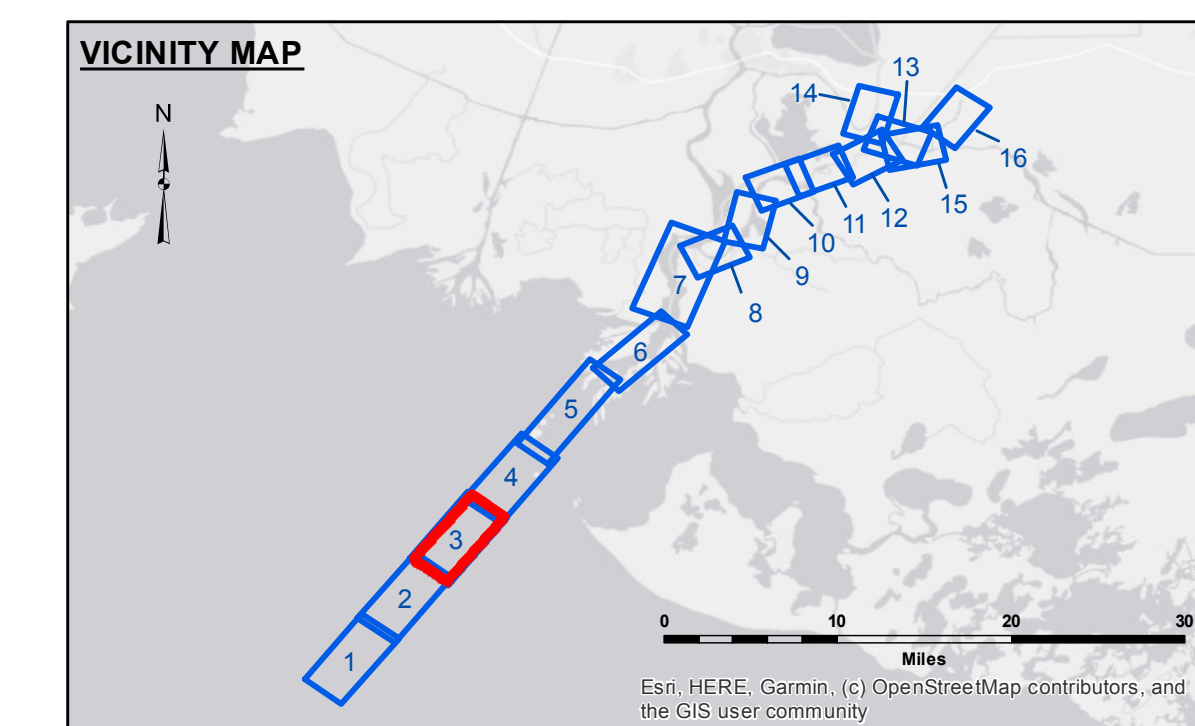
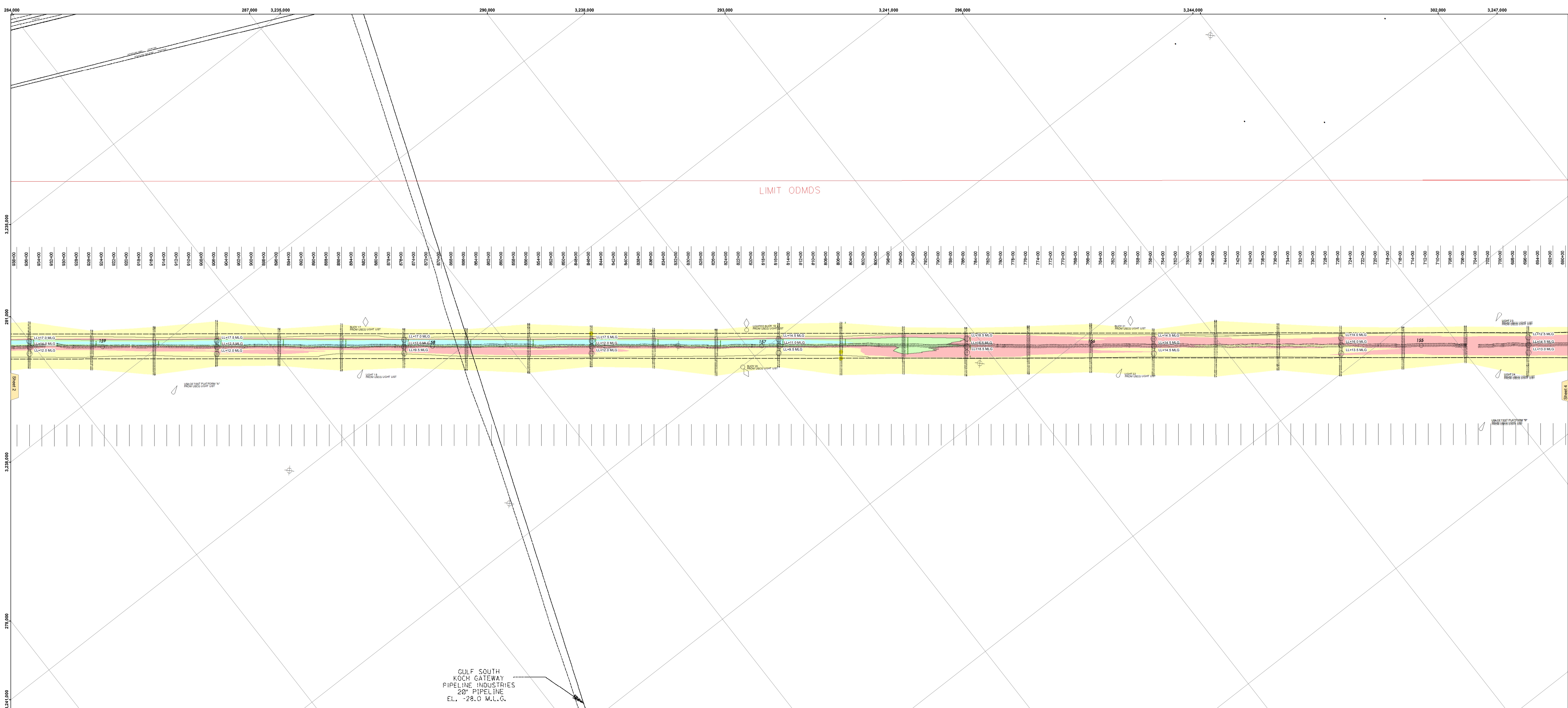




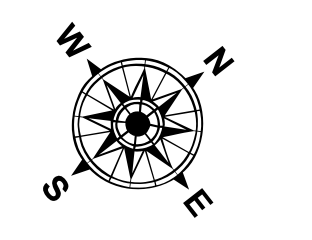
US Army Corps of Engineers
District: CEMVN



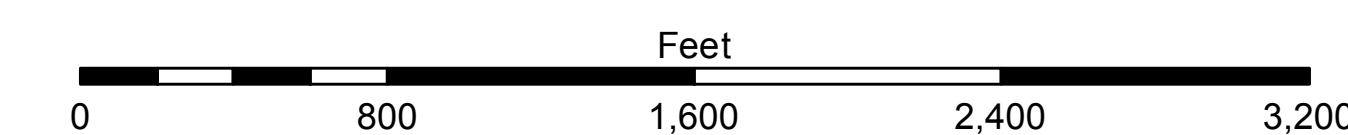
GULF SOUTH
KCOH GATEWAY
PIPELINE INDUSTRIES
20" PIPELINE
EL. -28.0 M.L.G.

LEGEND

--- Federal Navigation Channel	--- Cable Area	□ Borrow Area	■ -12' and above
— Federal Navigation Center Line	■ Placement Area	● Shoalest Sounding**	■ -12' to -15'
— As-built Pipeline/Cable	□ Anchorage Area	★ Beacon, General	■ -15' to -18'
..... Unconfirmed Pipeline/Cable	⊗ Obstruction Point	◆ Red Navigation Buoy	■ -18' to -20'
— Project Depth Contour	⚓ Wrecks-Submerged	◆ Green Navigation Buoy	■ -20' and below
			■ Fluff Thickness*



Gage Reading: EUGENE ISLAND: 2.5 MLG AVG
 Sea Conditions: 1-2 ft.
 Vessel Name: MV OB VALENTOUR
 Survey Type: CONDITION
 Sounding Frequency**: LOW



NOTES:
 Horizontal Coordinate System:
 North American Datum of 1983 (NAD83), projected to the State Plane
 Coordinate System (SPCS), Louisiana South Zone. Distance units in U.S. Survey Feet.
 Vertical Datum:
 Soundings are shown in feet and indicate depths below Mean Low Gulf Datum (MLG).
 Datum Relationships for the gage 88600 as of August 2013:
 0.07 NAVD83 = 0.01 MLLW = 1.5' MLG
 Distances on the Atchafalaya River are shown at 1 mile intervals.
 The location of navigation aids are based on and provided by the U.S. Coast Guard.
 2013 Aerial Photography data source: GEOCLIP, Atlantic Group, LLC. (1998 DOQQ imagery in green).
 Reference is N.O.A.A. Navigation Chart No. 11354.
 * Difference between high and low frequency elevations where greater than 1.0'.
 ** Shoalest Sounding per Quarter per Reach.
 *** High frequency (200 kHz) survey data represents the first signal return at a sounding location and will include suspended solids, known as "fluff", if present. Low frequency (20 kHz) survey data normally penetrates through this "fluff" layer to depict elevations of consolidated bottom material. Low frequency accuracies may vary depending on channel conditions and bathymetry settings.

DISCLAIMER: The data shown on this chart is based on the most recent available data. The data is provided for informational purposes only and is not intended for use in navigation. The user assumes all responsibility for the accuracy and reliability of the data. The user is advised to verify the data for their specific use. The data is provided as a service to the user and is not intended to be used as a substitute for professional advice. The user is advised to consult with a professional surveyor or hydrographer for more information. The data is provided as a service to the user and is not intended to be used as a substitute for professional advice. The user is advised to consult with a professional surveyor or hydrographer for more information.

Submitted By:	RYLAND/DAMS
Checked By:	AO
Approved By:	AO

**ATCHAFALAYA RIVER
 BAR CHANNEL
 AR_03_BAR_20200430_PR
 30 April 2020**

**Sheet Reference Number
 3 of 16**

Revision Number:
 4/30/2019/7022