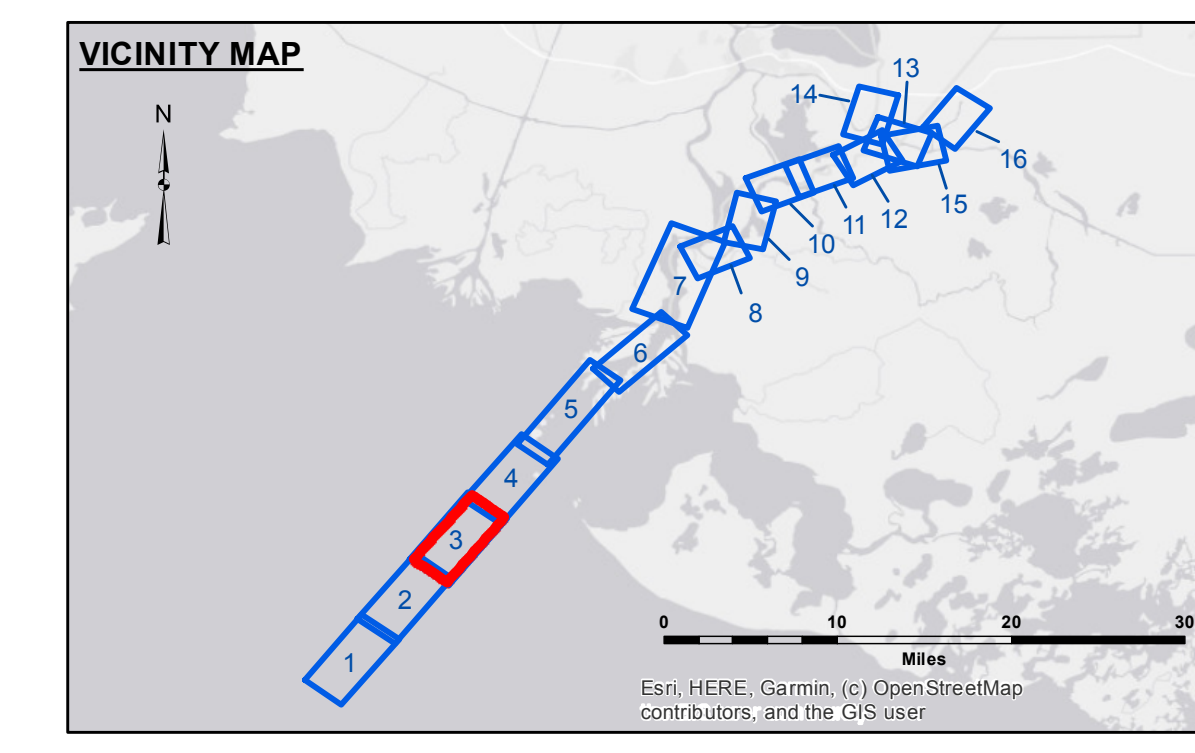
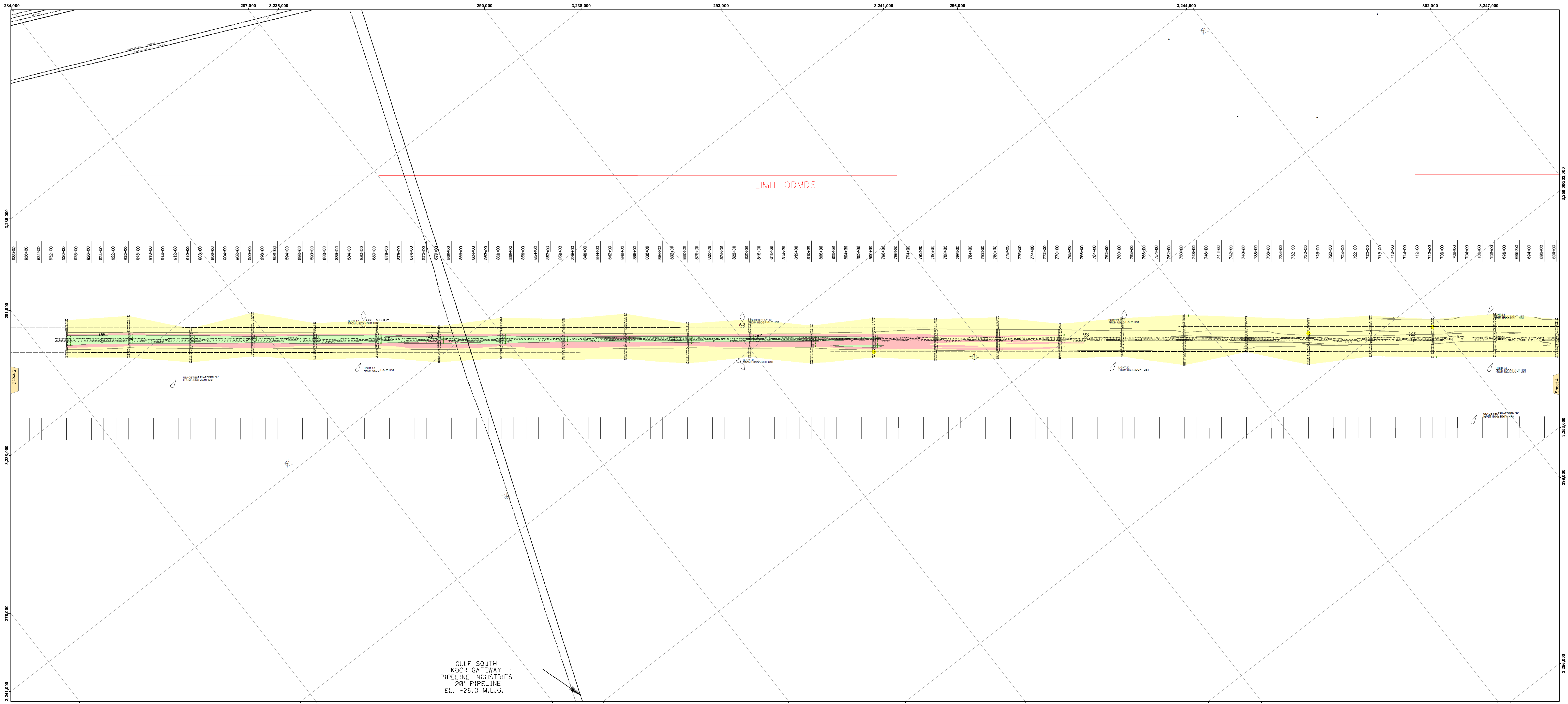




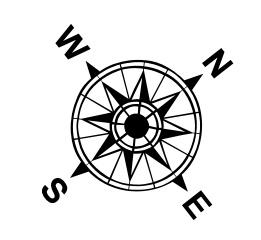
US Army Corps of Engineers District: CEMVN



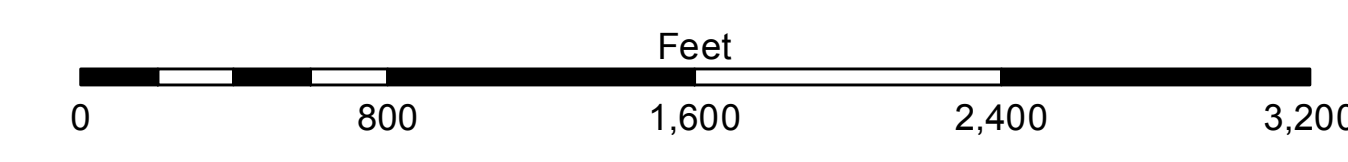
GULF SOUTH KOCCH GATEWAY PIPELINE INDUSTRIES 20" PIPELINE EL. -28.0 M.L.G.

LEGEND

--- Federal Navigation Channel	--- Cable Area	□ Borrow Area	■ -12' and above
— Federal Navigation Center Line	■ Placement Area	● Shoalest Sounding**	■ -12' to -15'
— As-built Pipeline/Cable	⊠ Anchorage Area	★ Beacon, General	■ -15' to -18'
..... Unconfirmed Pipeline/Cable	⊗ Obstruction Point	◆ Red Navigation Buoy	■ -18' to -20'
— Project Depth Contour	⚓ Wrecks-Submerged	◆ Green Navigation Buoy	■ -20' and below
			■ Fluff Thickness*



Gage Reading: EUGINE ISLAND: 2.30 MLG AVG.
 Sea Conditions: 1 TO 2 FEET
 Vessel Name: MV LAFORCHE
 Survey Type: CS
 Sounding Frequency***: LOW



NOTES:
 Horizontal Coordinate System: North American Datum of 1983 (NAD83), projected to the State Plane Coordinate System (SPCS), Louisiana South Zone. Distance units in U.S. Survey Feet.
 Vertical Datum: Soundings are shown in feet and indicate depths below Mean Low Gulf Datum (MLG). Datum Relationships for the gage 88600 as of August 2013: 0.0' NAD83 = 0.6' MLW = 1.5' MLG.
 Distances on the Atchafalaya River are shown at 1 mile intervals.
 The location of navigation aids are based on and provided by the U.S. Coast Guard.
 2013 Aerial Photography data source: GEOCLIP, Atlantic Group, LLC. (1998 DOQQ imagery in green).
 Reference is N.O.A. Navigation Chart No. 11354.
 * Difference between high and low frequency elevations where greater than 1.0'.
 ** Shoalest Sounding per Quarter per Reach.
 *** High frequency (200 kHz) survey data represents the first signal return at a sounding location and will include suspended solids, known as "fluff", if present. Low frequency (20 kHz) survey data normally penetrates through this "fluff" layer to depict elevations of consolidated bottom material. Low frequency accuracies may vary depending on channel conditions and bathymetric settings.

DISCLAIMER: The Corps of Engineers makes no warranty, expressed or implied, for the use of the data for purposes not intended by the Corps of Engineers. The Corps of Engineers is not responsible for any errors or omissions in this document. The user of this document is advised to verify the accuracy of the data for their specific use. The Corps of Engineers is not responsible for any damage or loss resulting from the use of this document. The Corps of Engineers is not responsible for any damage or loss resulting from the use of this document. The Corps of Engineers is not responsible for any damage or loss resulting from the use of this document.

U.S. ARMY CORPS OF ENGINEERS
 NEW ORLEANS DISTRICT

Author:	Checked By:
Drawn By:	Reviewed By:
Plotted By:	Approved By:
Field By:	
Checked By:	
Approved By:	

**ATCHAFALAYA RIVER
 BAR CHANNEL
 AR_03_BAR_20210329_CS
 29 March 2021**

**Sheet Reference Number
 3 of 16**