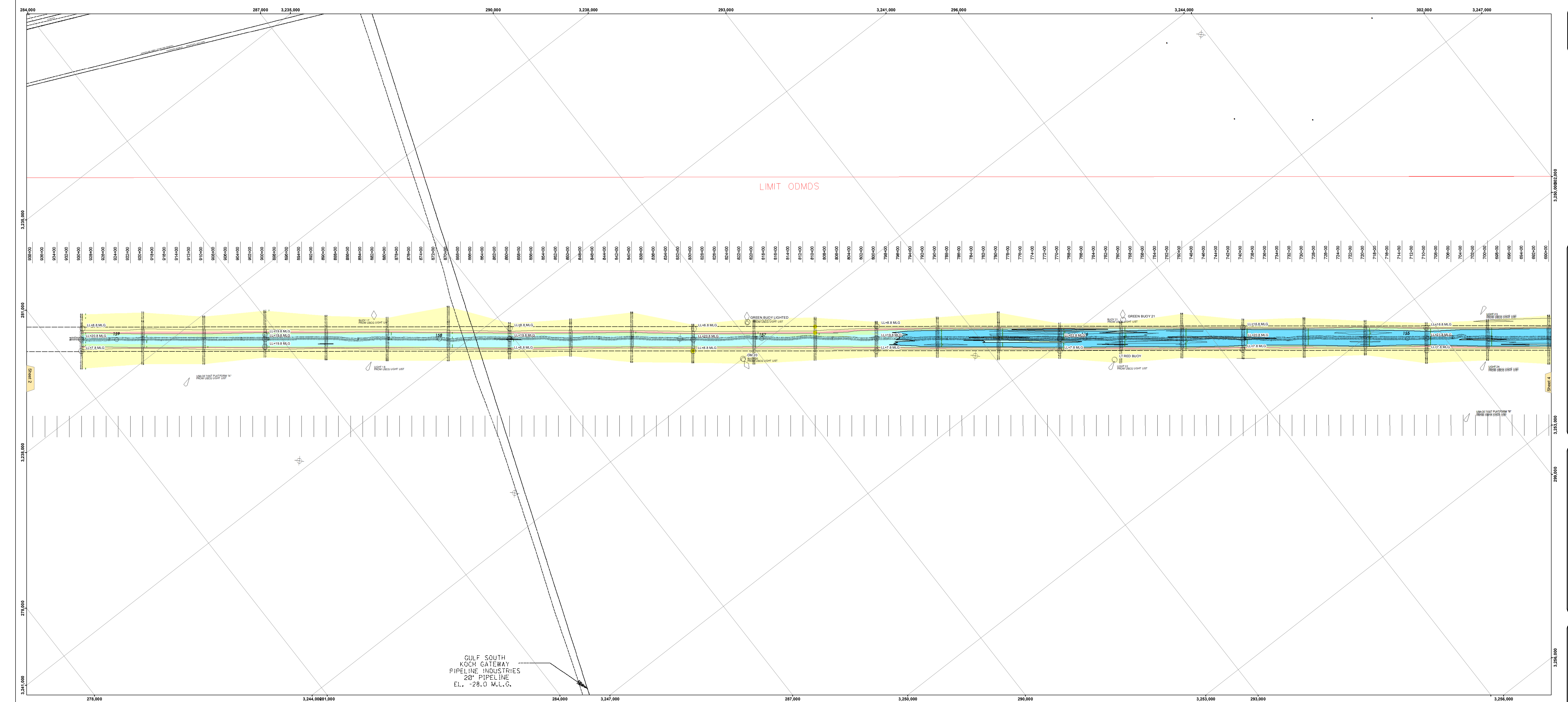




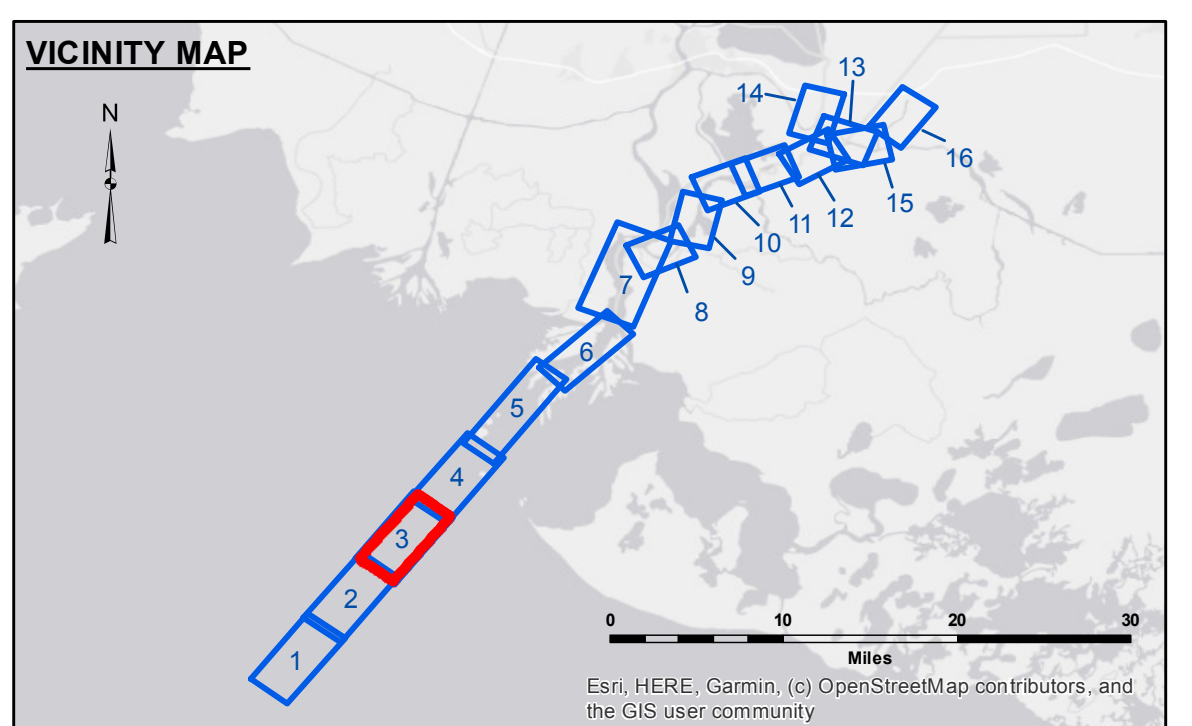
US Army Corps of Engineers  
District: CEMVN



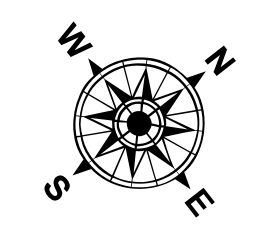
Sheet 2

Sheet 4

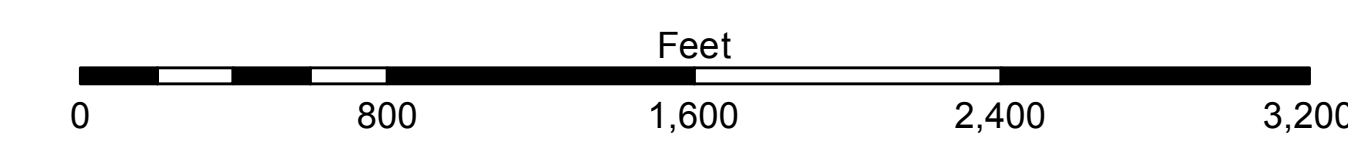
GULF SOUTH  
KOCH GATEWAY  
PIPELINE INDUSTRIES  
20" PIPELINE  
E.L. -28.0 M.L.G.



LEGEND			
--- Federal Navigation Channel	--- Cable Area	□ Borrow Area	-12' and above
— Federal Navigation Center Line	■ Placement Area	● Shoalest Sounding**	-12' to -15'
— As-built Pipeline/Cable	⊠ Anchorage Area	★ Beacon, General	-15' to -18'
..... Unconfirmed Pipeline/Cable	⊗ Obstruction Point	◆ Red Navigation Buoy	-18' to -20'
— Project Depth Contour	⚓ Wrecks-Submerged	◆ Green Navigation Buoy	-20' and below
		3	Fluff Thickness*



Gage Reading: EUGINE ISLAND: 4.2 MLG AVG.  
Sea Conditions: CHOPPY  
Vessel Name: M/V VALENTOUR  
Survey Type: CONDITION  
Sounding Frequency\*\*\*: LOW



**NOTES:**  
Horizontal Coordinate System:  
North American Datum of 1983 (NAD83), projected to the State Plane  
Coordinate System (SPCS), Louisiana South Zone. Distance units in U.S. Survey Feet.  
Vertical Datum:  
Soundings are shown in feet and indicate depths below Mean Low Gulf Datum (MLG).  
Datum Relationships for the gage 88600 as of August 2013:  
0.07 NAVD83 = 0.05 MLGW = 1.5' MLG  
Distances on the Atchafalaya River are shown at 1 mile intervals.  
The location of navigation aids are based on and provided by the U.S. Coast Guard.  
2013 Aerial Photography data source: GEOCLIP, Atlantic Group, LLC. (1998 DOQQ imagery in green).  
Reference is N.O.A.A. Navigation Chart No. 11354.  
\* Difference between high and low frequency elevations where greater than 1.0'.  
\*\* Shoalest Sounding per Quarter per Reach.  
\*\*\* High frequency (200 kHz) survey data represents the first signal return at a sounding location and will include suspended solids, known as "fluff", if present. Low frequency (20 kHz) survey data normally penetrates through this "fluff" layer to depict elevations of consolidated bottom material. Low frequency accuracies may vary depending on channel conditions and bathymetry settings.

U.S. ARMY CORPS OF ENGINEERS NEW ORLEANS DISTRICT			
Author:	Reviewed By:	Checked By:	AO
SP/PA	SP/PA	SP/PA	
Drawn:	Checked:	Checked:	
SP/PA	SP/PA	SP/PA	
SP/PA	SP/PA	SP/PA	

ATCHAFALAYA RIVER  
BAR CHANNEL  
AR\_03\_BAR\_20211229\_CS  
29 December 2021

Sheet Reference Number  
3 of 16