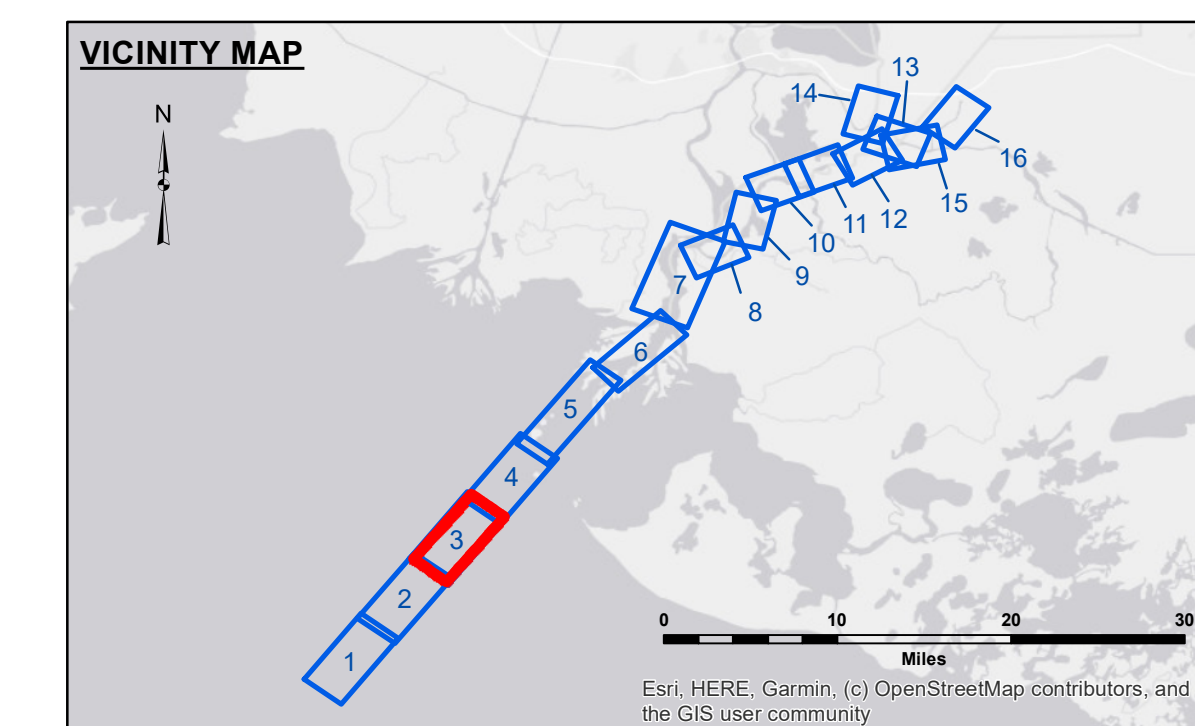
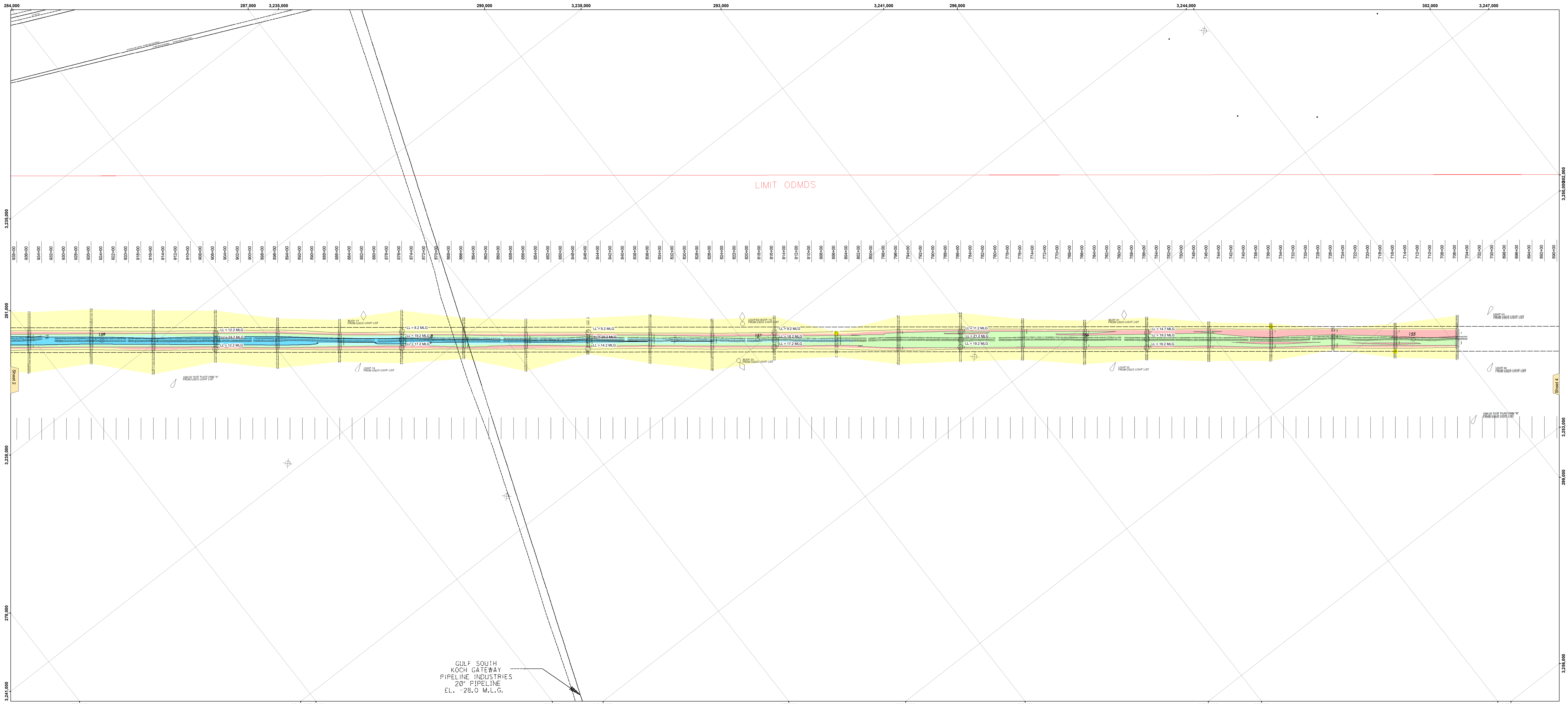


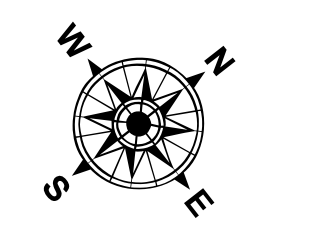


US Army Corps of Engineers
District: CEMVN

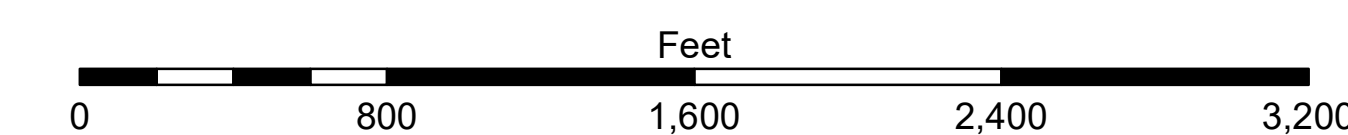


LEGEND

--- Federal Navigation Channel	○ Cable Area	□ Borrow Area	■ -12' and above
— Federal Navigation Center Line	□ Placement Area	● Shoalest Sounding**	■ -12' to -15'
— As-built Pipeline/Cable	⊗ Anchorage Area	★ Beacon, General	■ -15' to -18'
..... Unconfirmed Pipeline/Cable	⊗ Obstruction Point	★ Red Navigation Buoy	■ -18' to -20'
— Project Depth Contour	⚓ Wrecks-Submerged	★ Green Navigation Buoy	■ -20' and below
			■ Fluff Thickness*



Gage Reading: EUGENE ISLAND: 0.78 MLG AVG
 Sea Conditions: CALM
 Vessel Name: VALENTOUR
 Survey Type: CONDITION
 Sounding Frequency**: LOW



NOTES:
 Horizontal Coordinate System: North American Datum of 1983 (NAD83), projected to the State Plane Coordinate System (SPCS), Louisiana South Zone. Distance units in U.S. Survey Feet.
 Vertical Datum: Soundings are shown in feet and indicate depths below Mean Low Gulf Datum (MLG). Datum Relationships for the gage 88600 as of August 2013: 0.0' NAVD83 = 0.6' MLG - 1.5' MLG
 Distances on the Atchafalaya River are shown at 1 mile intervals.
 The location of navigation aids are based on and provided by the U.S. Coast Guard.
 2013 Aerial Photography data source: GEOCLIP, Atlantic Group, LLC. (1998 DOQQ imagery in green).
 Reference is N.O.A. Navigation Chart No. 11354.
 * Difference between high and low frequency elevations where greater than 1.0'.
 ** Shoalest Sounding per Quarter per Reach.
 *** High frequency (200 kHz) survey data represents the first signal return as a sounding location and will include suspended solids, known as "fluff", if present. Low frequency (20 kHz) survey data normally penetrates through this "fluff" layer to depict elevations of consolidated bottom material. Low frequency accuracies may vary depending on channel conditions and bathymetry settings.

DISCLAIMER: The United States Government neither endorses nor warrants the quality of the data provided for this project. The data is provided for informational purposes only. The user assumes all liability for any use of the data. The data is provided for informational purposes only. The user assumes all liability for any use of the data. The data is provided for informational purposes only. The user assumes all liability for any use of the data.

Drawn By: PM/A	Checked By: JH
Reviewed By: JH	Checked By: JH
Approved By: JH	Checked By: JH

ATCHAFALAYA RIVER
 BAR CHANNEL
 AR_03_BAR_20221004_CS
 04 October 2022

Sheet Reference Number
 3 of 16