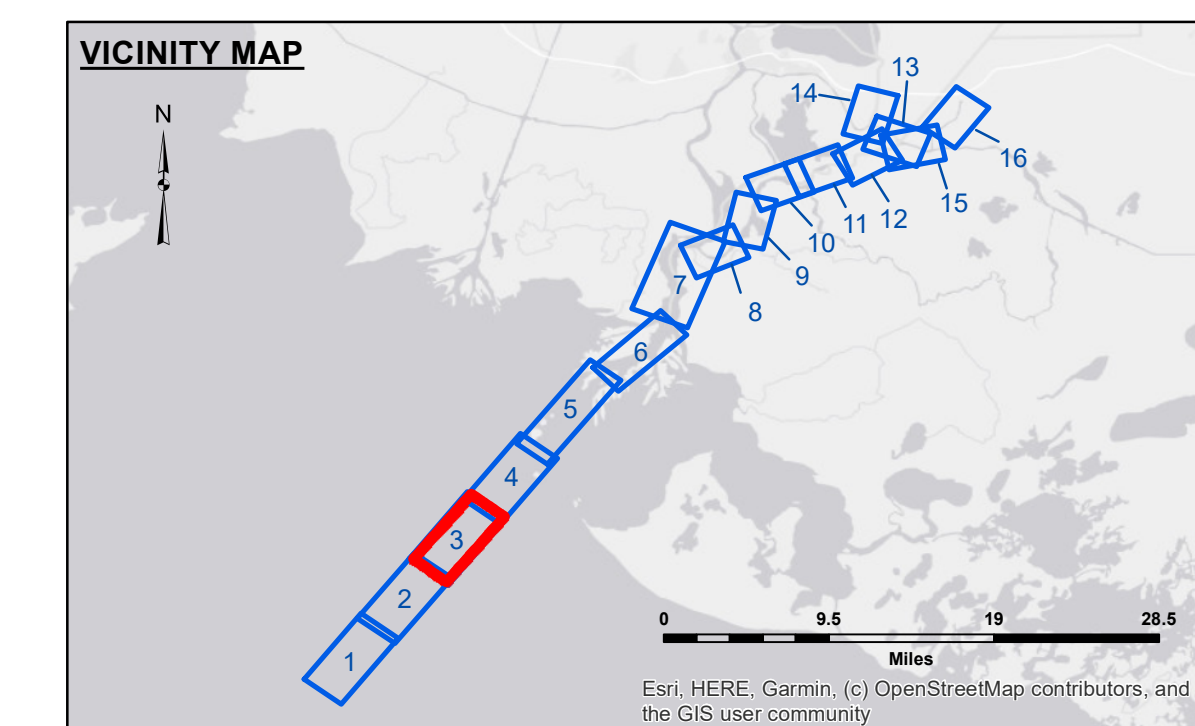
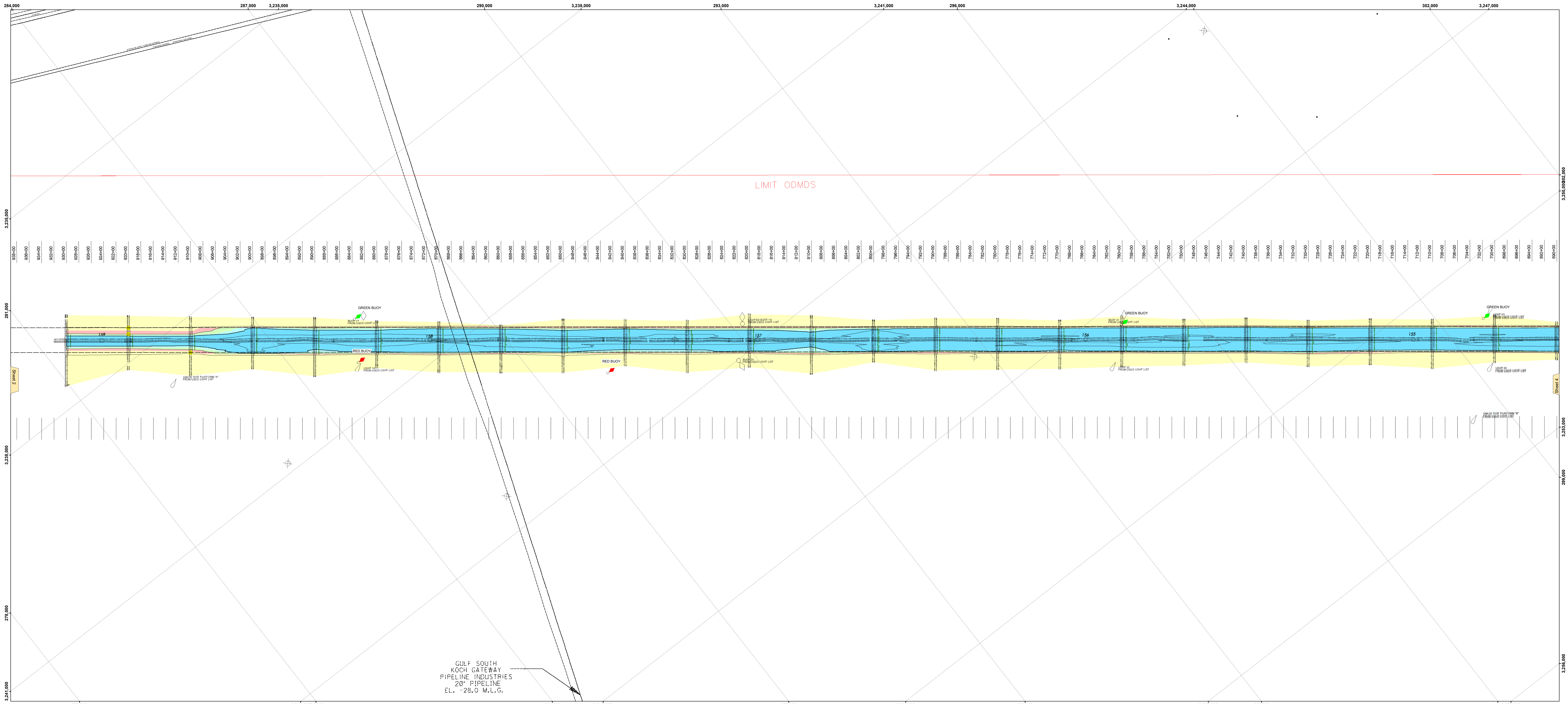


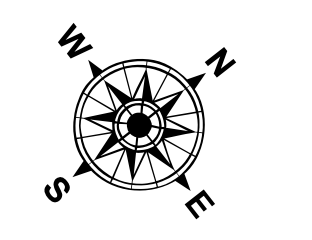


US Army Corps of Engineers District: CEMVN

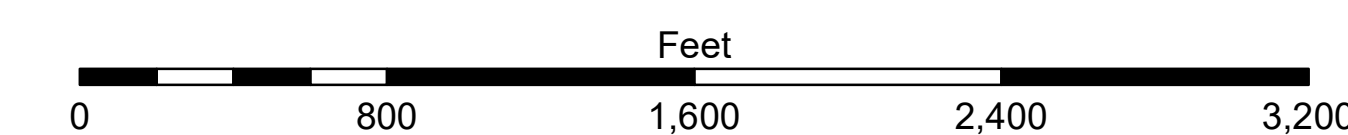


**LEGEND**

--- Federal Navigation Channel	○ Cable Area	□ Borrow Area	■ -12' and above
— Federal Navigation Center Line	□ Placement Area	● Shoalest Sounding**	■ -12' to -15'
— As-built Pipeline/Cable	□ Anchorage Area	★ Beacon, General	■ -15' to -18'
..... Unconfirmed Pipeline/Cable	⊗ Obstruction Point	◆ Red Navigation Buoy	■ -18' to -20'
— Project Depth Contour	⚓ Wrecks-Submerged	◆ Green Navigation Buoy	■ -20' and below
			■ Fluff Thickness* 3



Gage Reading: EUGENE IS: 2.2 MLG AVG  
 Sea Conditions: 0-1 FT  
 Vessel Name: VALENTOUR  
 Survey Type: DREDGE PROGRESS  
 Sounding Frequency\*\*\*: LOW



**NOTES:**  
 Horizontal Coordinate System: North American Datum of 1983 (NAD83), projected to the State Plane Coordinate System (SPCS), Louisiana South Zone. Distance units in U.S. Survey Feet.  
 Vertical Datum: Soundings are shown in feet and indicate depths below Mean Low Gulf Datum (MLG). Datum Relationships for the gage 88600 as of August 2013: 0.0' NAVD83 = 0.0' MLG = 1.0' MLG.  
 Distances on the Atchafalaya River are shown at 1 mile intervals.  
 The location of navigation aids are based on and provided by the U.S. Coast Guard.  
 2013 Aerial Photography data source: GEOCLIP, Atlantic Group, LLC. (1998 DOQQ imagery in green).  
 Reference is N.O.A.A. Navigation Chart No. 11354.  
 \* Difference between high and low frequency elevations where greater than 1.0'.  
 \*\* Shoalest Sounding per Quarter per Reach.  
 \*\*\* High frequency (200 kHz) survey data represents the first signal return at a sounding location and will include suspended solids, known as "fluff", if present. Low frequency (20 kHz) survey data normally penetrates through this "fluff" layer to depict elevations of consolidated bottom material. Low frequency accuracies may vary depending on channel conditions and bathymetry settings.

**DISCLAIMER:** The United States Government neither endorses nor disendorses any commercial products or services, nor does it make any warranty, expressed or implied, with respect to the accuracy, reliability, or completeness of any information provided by any party. The use of any trade names or product names in this document is for identification purposes only and does not constitute an endorsement or approval of the products or services named. The use of any trade names or product names in this document is for identification purposes only and does not constitute an endorsement or approval of the products or services named. The use of any trade names or product names in this document is for identification purposes only and does not constitute an endorsement or approval of the products or services named.

U.S. ARMY CORPS OF ENGINEERS  
 NEW ORLEANS DISTRICT

Submitted:	Checked By:
ADAMSCHAMPINE	JH
Reviewed:	Checked By:
JH	JH
Approved:	Checked By:
JH	JH

**ATCHAFALAYA RIVER  
 BAR CHANNEL  
 AR\_03\_BAR\_20230519\_PR  
 19 May 2023**

**Sheet Reference Number  
 3 of 16**