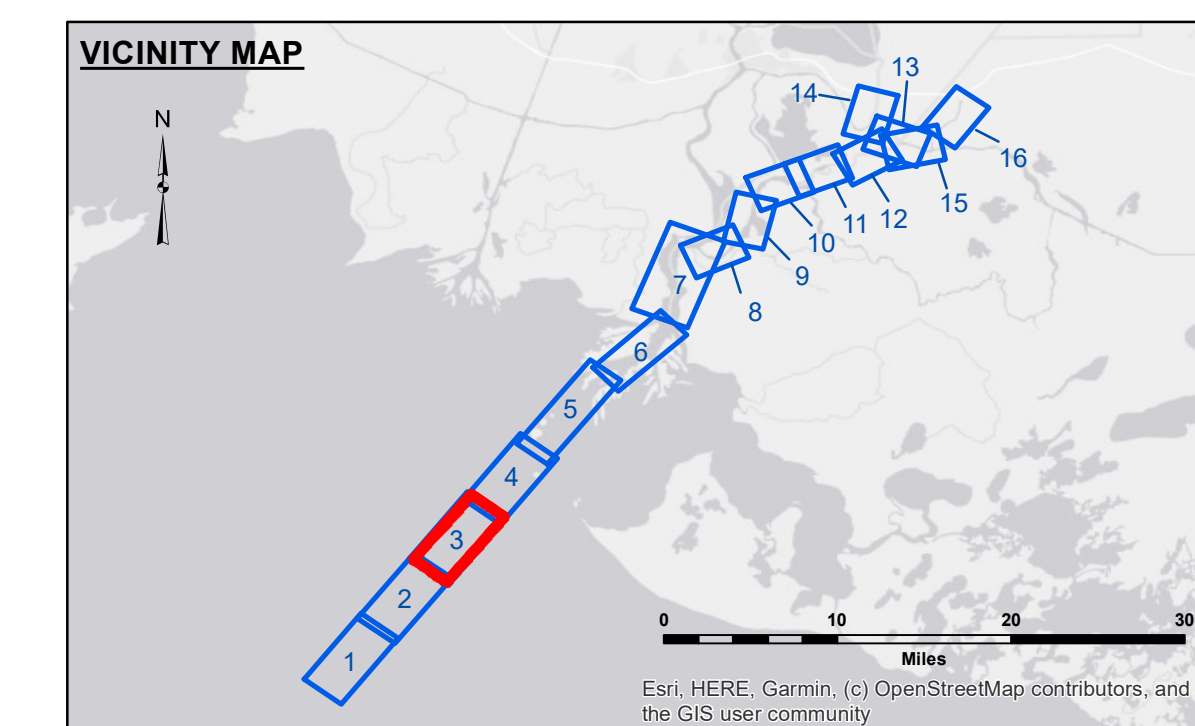
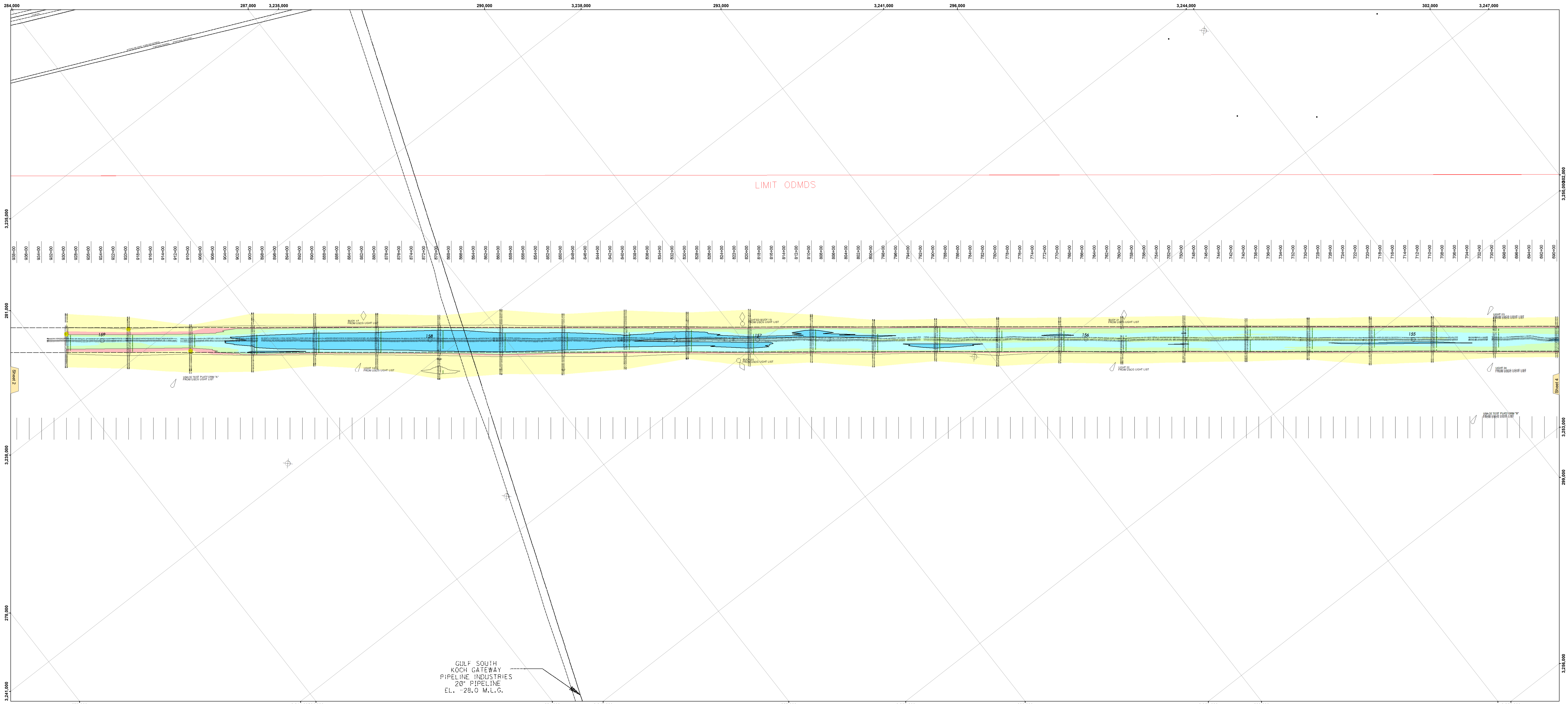
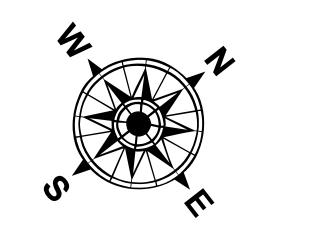




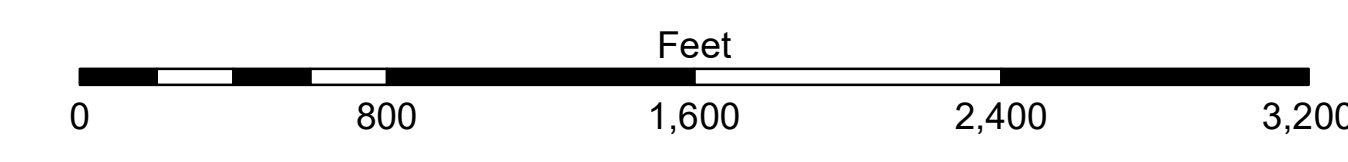
US Army Corps of Engineers District: CEMVN



LEGEND	
--- Federal Navigation Channel	--- Cable Area
--- Federal Navigation Center Line	--- Placement Area
--- As-built Pipeline/Cable	--- Anchorage Area
--- Unconfirmed Pipeline/Cable	--- Obstruction Point
--- Project Depth Contour	--- Wrecks-Submerged
--- Borrow Area	--- Shoalest Sounding**
--- Beacon, General	--- Red Navigation Buoy
--- Green Navigation Buoy	--- Fluff Thickness*



Gage Reading: EUGENE ISLAND: 1.25 MLG AVG.
 Sea Conditions: 0-1 FT
 Vessel Name: M/V VALENTOUR
 Survey Type: CONDITION
 Sounding Frequency***: LOW



NOTES:
 Horizontal Coordinate System: North American Datum of 1983 (NAD83), projected to the State Plane Coordinate System (SPCS), Louisiana South Zone. Distance units in U.S. Survey Feet.
 Vertical Datum: Soundings are shown in feet and indicate depths below Mean Low Gulf Datum (MLG). Datum Relationships for the gage 88600 as of August 2013: 0.0' NAVD83 = 0.0' MLG / 1.0' MLG.
 Distances on the Atchafalaya River are shown at 1 mile intervals.
 The location of navigation aids are based on and provided by the U.S. Coast Guard.
 2013 Aerial Photography data source: GEOCLIP, Atlantic Group, LLC. (1998 DOQQ imagery in green). Reference is N.O.A.A. Navigation Chart No. 11354.
 * Difference between high and low frequency elevations where greater than 1.0'.
 ** Shoalest Sounding per Quarter per Reach.
 *** High frequency (200 kHz) survey data represents the first signal return as a sounding location and will include suspended solids, known as "fluff", if present. Low frequency (20 kHz) survey data normally penetrates through this "fluff" layer to depict elevations of consolidated bottom material. Low frequency accuracies may vary depending on channel conditions and bathymetry settings.

DISCLAIMER: The United States Government hereby disclaims any liability for any damages, including reasonable attorneys' fees, that may be incurred by any party as a result of the use of the information contained herein. The use of the information contained herein is at the user's sole risk. The United States Government makes no warranty, expressed or implied, regarding the accuracy, reliability, or completeness of the information contained herein. The use of the information contained herein is at the user's sole risk. The United States Government makes no warranty, expressed or implied, regarding the accuracy, reliability, or completeness of the information contained herein. The use of the information contained herein is at the user's sole risk.

Submitted:	Checked By:
ADAMS/CHAMPINE	ADAMS/CHAMPINE
Drawn:	Checked By:
ADAMS/CHAMPINE	ADAMS/CHAMPINE
Approved:	Checked By:
ADAMS/CHAMPINE	ADAMS/CHAMPINE

**ATCHAFALAYA RIVER
 BAR CHANNEL
 AR_03_BAR_20230921_CS
 21 September 2023**

**Sheet Reference Number
 3 of 16**