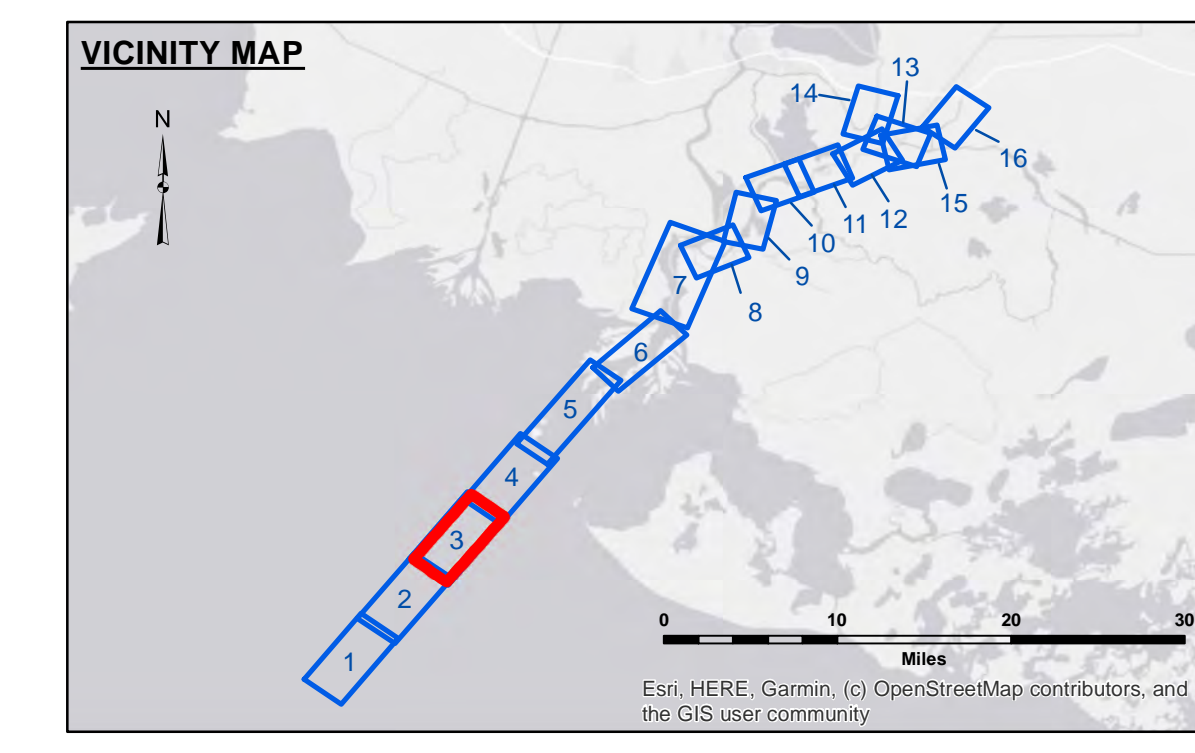
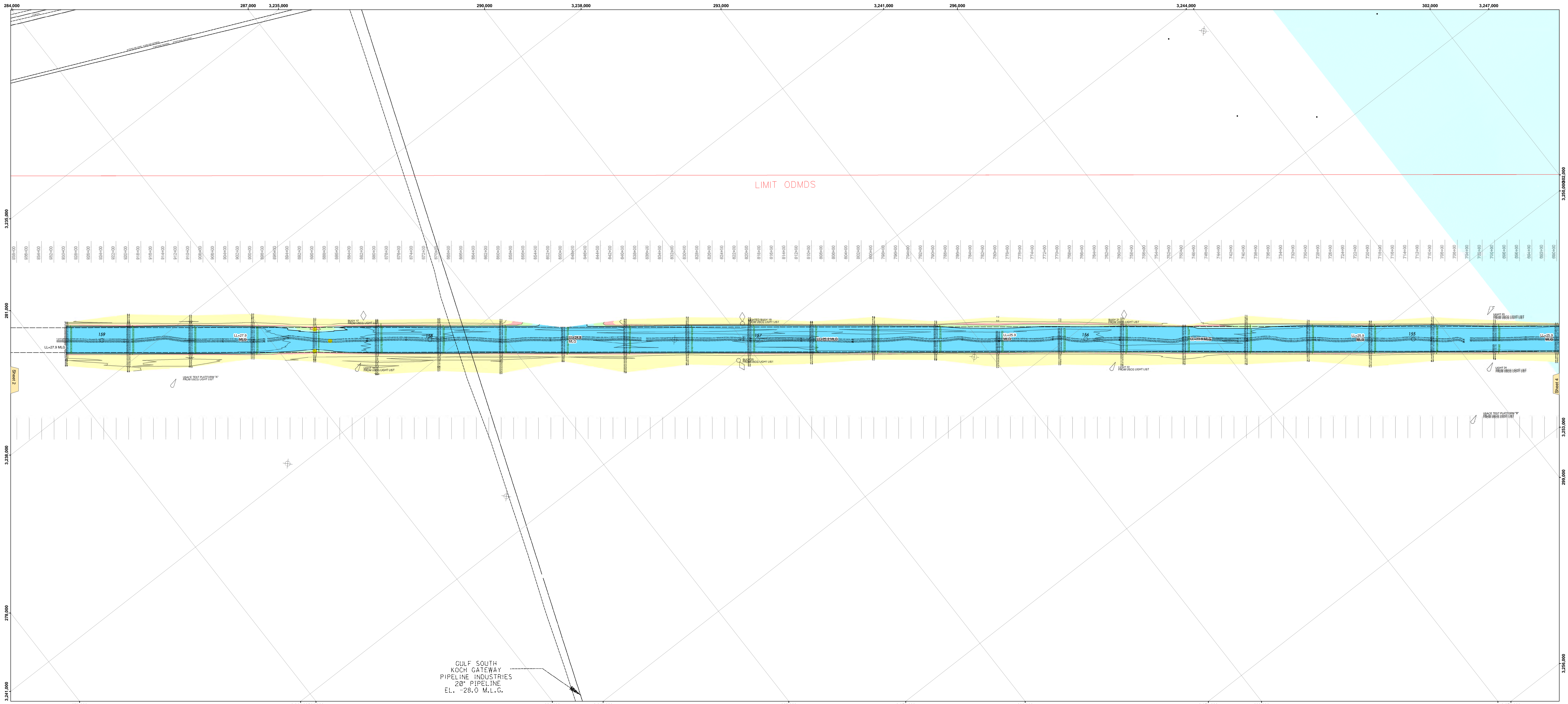


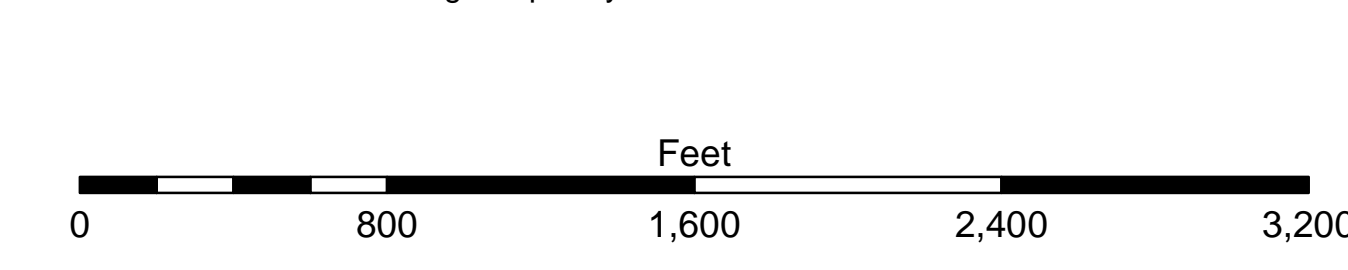
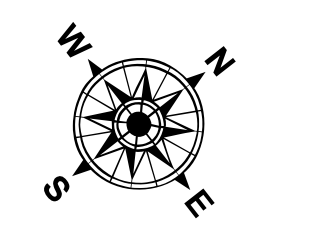


US Army Corps of Engineers District: CEMVN



LEGEND

--- Federal Navigation Channel	● Cable Area	□ Borrow Area	■ -12' and above
— Federal Navigation Center Line	□ Placement Area	● Shoalest Sounding**	■ -12' to -15'
— As-built Pipeline/Cable	□ Anchorage Area	★ Beacon, General	■ -15' to -18'
..... Unconfirmed Pipeline/Cable	⊗ Obstruction Point	◆ Red Navigation Buoy	■ -18' to -20'
— Project Depth Contour	⚓ Wrecks-Submerged	◆ Green Navigation Buoy	■ -20' and below
			3 Fluff Thickness*



Gage Reading: EUGINE ISLAND: 2.07 MLG AVG.
 Sea Conditions: 0-1 FT
 Vessel Name: M/V VALENTOUR
 Survey Type: DREDGE PROG
 Sounding Frequency***: LOW

NOTES:
 Horizontal Coordinate System: North American Datum of 1983 (NAD83), projected to the State Plane Coordinate System (SPCS), Louisiana South Zone. Distance units in U.S. Survey Feet.
 Vertical Datum: Soundings are shown in feet and indicate depths below Mean Low Gulf Datum (MLG). Datum Relationships for the gage 88600 as of August 2013: 0.0' NAVD83 = 0.6' MLG = 1.5' MLG.
 Distances on the Atchafalaya River are shown at 1 mile intervals.
 The location of navigation aids are based on and provided by the U.S. Coast Guard.
 2013 Aerial Photography data source: GEOCLIP, Atlantic Group, LLC. (1998 DOQQ imagery in green).
 Reference is N.O.A.A. Navigation Chart No. 11354.
 * Difference between high and low frequency elevations where greater than 1.0'.
 ** Shoalest Sounding per Quarter per Reach.
 *** High frequency (200 kHz) survey data represents the first signal return at a sounding location and will include suspended solids, known as "fluff", if present. Low frequency (20 kHz) survey data normally penetrates through this "fluff" layer to depict elevations of consolidated bottom material. Low frequency accuracies may vary depending on channel conditions and bathymetric settings.

DISTRICT NOTICE: The United States Government is authorized to reproduce and distribute reprints for government purposes not withstanding any copyright notation that may appear hereon. The views and opinions of the authors are those of the authors and do not necessarily represent those of the United States Government. The use of trade names or product names in this document is not to be taken as an endorsement or approval by the United States Government of the quality or value of such products, nor is it intended to recommend or endorse one product over another.

U.S. ARMY CORPS OF ENGINEERS
NEW ORLEANS DISTRICT

Submitted:	Checked By:
ADAMS/CLAMPINE	ADAMS/CLAMPINE
Drawn By:	Checked By:
AOJ/H	AOJ/H

**ATCHAFALAYA RIVER
 BAR CHANNEL
 AR_03_BAR_20240613_CS
 13 June 2024**

**Sheet Reference Number
 3 of 16**