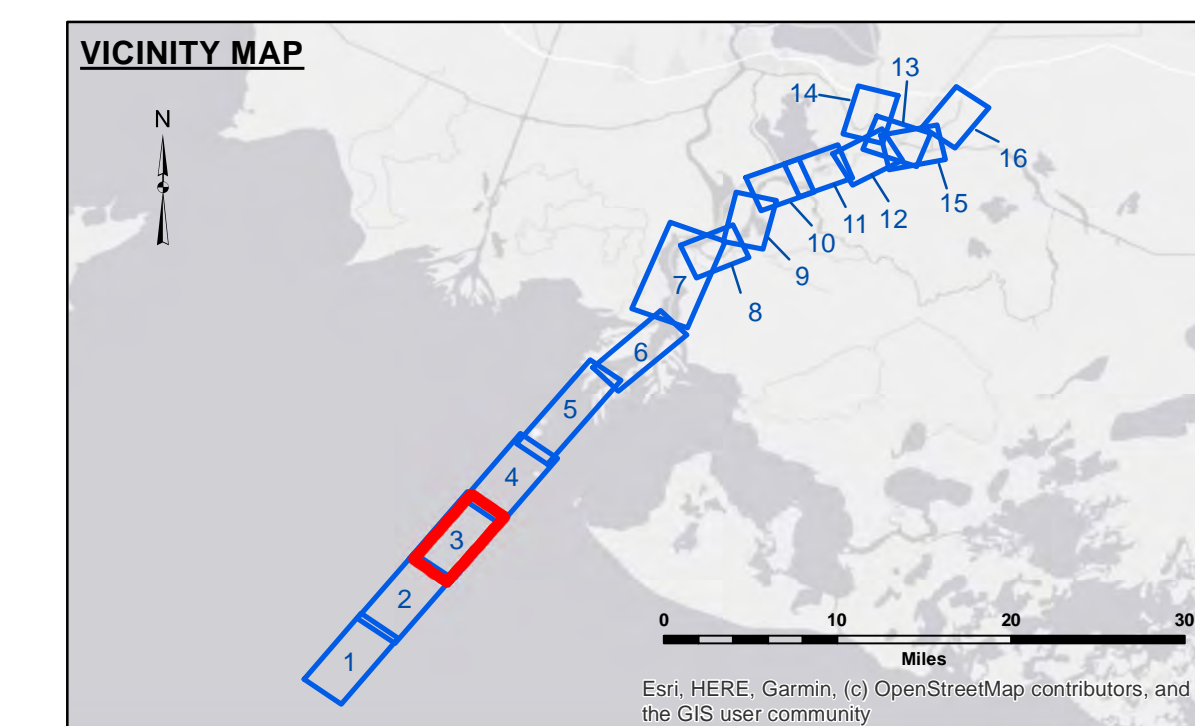
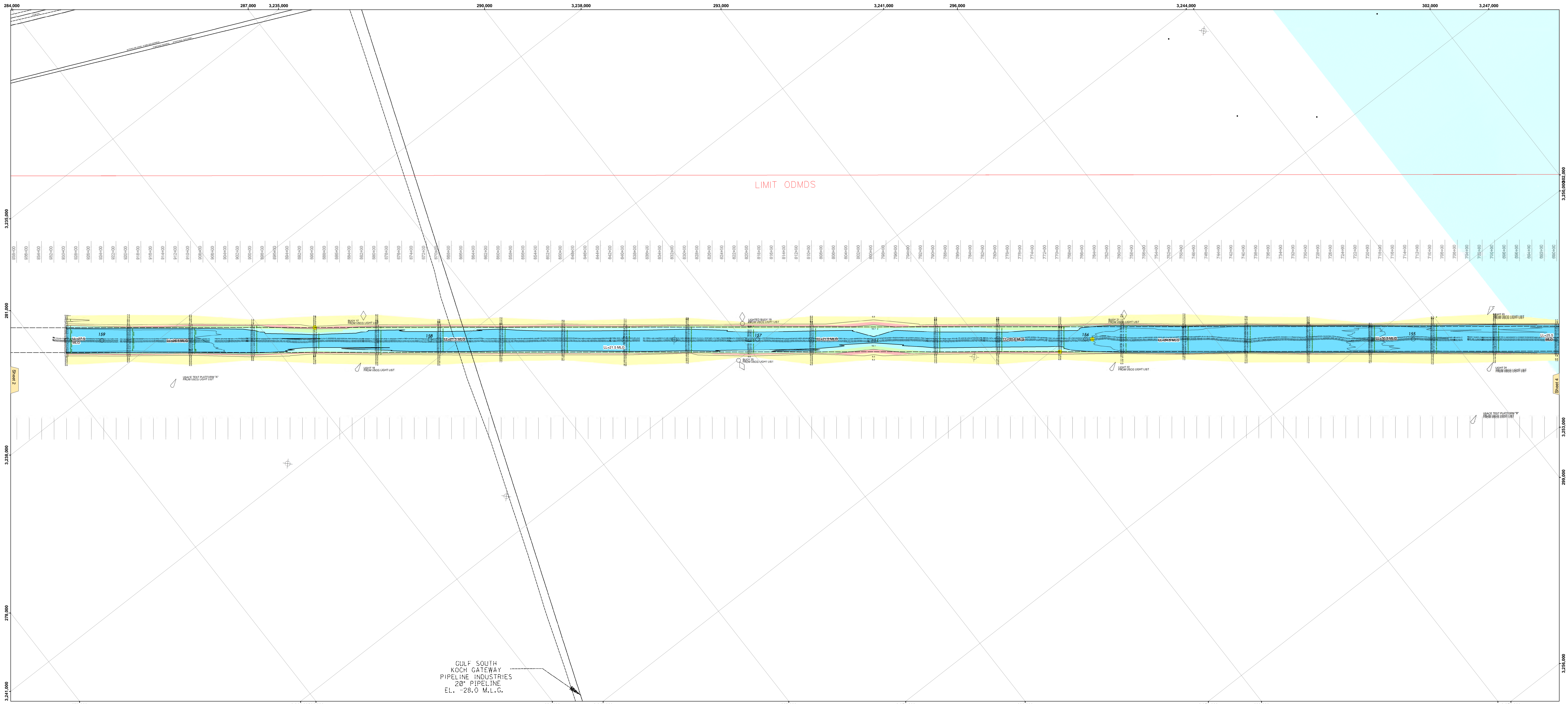


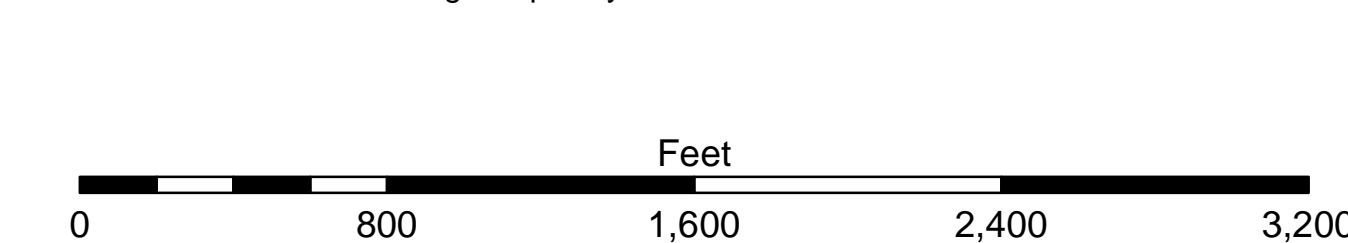
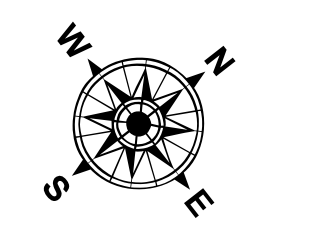


US Army Corps of Engineers  
District: CEMVN



**LEGEND**

--- Federal Navigation Channel	--- Cable Area	□ Borrow Area	■ -12' and above
— Federal Navigation Center Line	■ Placement Area	● Shoalest Sounding**	■ -12' to -15'
— As-built Pipeline/Cable	□ Anchorage Area	★ Beacon, General	■ -15' to -18'
..... Unconfirmed Pipeline/Cable	⊗ Obstruction Point	★ Red Navigation Buoy	■ -18' to -20'
— Project Depth Contour	⚓ Wrecks-Submerged	★ Green Navigation Buoy	■ -20' and below
			■ Fluff Thickness*



Gage Reading: EUGENE ISLAND: 1.53 MLG AVG.  
 Sea Conditions: 0-1 FT  
 Vessel Name: M/V VALENTOUR  
 Survey Type: DREDGE PROG  
 Sounding Frequency\*\*\*: LOW

**NOTES:**  
 Horizontal Coordinate System:  
 North American Datum of 1983 (NAD83), projected to the State Plane  
 Coordinate System (SPCS), Louisiana South Zone. Distance units in U.S. Survey Feet.  
 Vertical Datum:  
 Soundings are shown in feet and indicate depths below Mean Low Gulf Datum (MLG).  
 Datum Relationships for the gage 88600 as of August 2013:  
 0.0' NAVD83 = 0.6' MLG = 1.6' MLG  
 Distances on the Atchafalaya River are shown at 1 mile intervals.  
 The location of navigation aids are based on and provided by the U.S. Coast Guard.  
 2013 Aerial Photography data source: GEOCLIP, Atlantic Group, LLC. (1998 DOQQ imagery in green).  
 Reference is N.O.A. Navigation Chart No. 11354.  
 \* Difference between high and low frequency elevations where greater than 1.0'.  
 \*\* Shoalest Sounding per Quarter per Reach.  
 \*\*\* High frequency (200 kHz) survey data represents the first signal return at a sounding location and will include suspended solids, known as "fluff", if present. Low frequency (20 kHz) survey data normally penetrates through this "fluff" layer to depict elevations of consolidated bottom material. Low frequency accuracies may vary depending on channel conditions and bathymetry settings.

**DISTRICT NOTICE:** The United States Government hereby disclaims any liability for the use of the data for other than its intended purpose. The data is provided for informational purposes only and is not intended to be used for any other purpose. The data is provided for informational purposes only and is not intended to be used for any other purpose. The data is provided for informational purposes only and is not intended to be used for any other purpose. The data is provided for informational purposes only and is not intended to be used for any other purpose.

U.S. ARMY CORPS OF ENGINEERS  
NEW ORLEANS DISTRICT

Submitted:	Checked By:
ADAMS/CHAMPINE	ADAMS/CHAMPINE
Drawn By:	Checked By:
BD	AOJH
Approved:	Checked By:
	AOJH

**ATCHAFALAYA RIVER  
 BAR CHANNEL  
 AR\_03\_BAR\_20241101\_CS  
 01 November 2024**

**Sheet Reference Number  
 3 of 16**