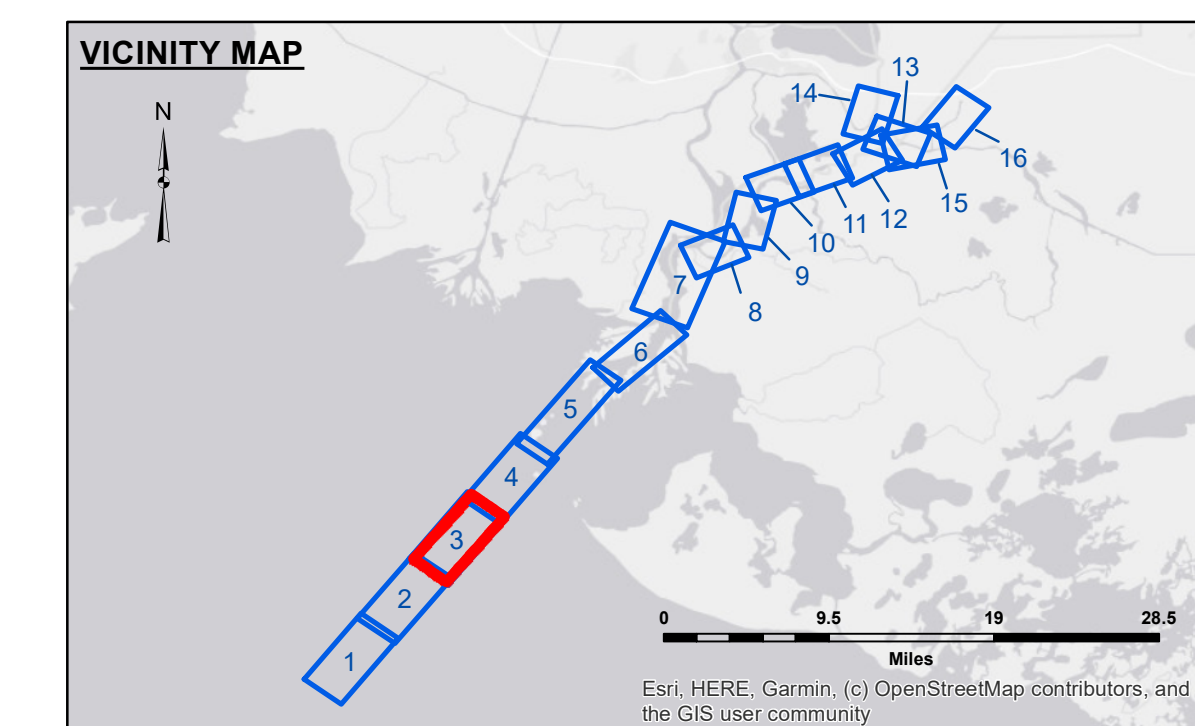
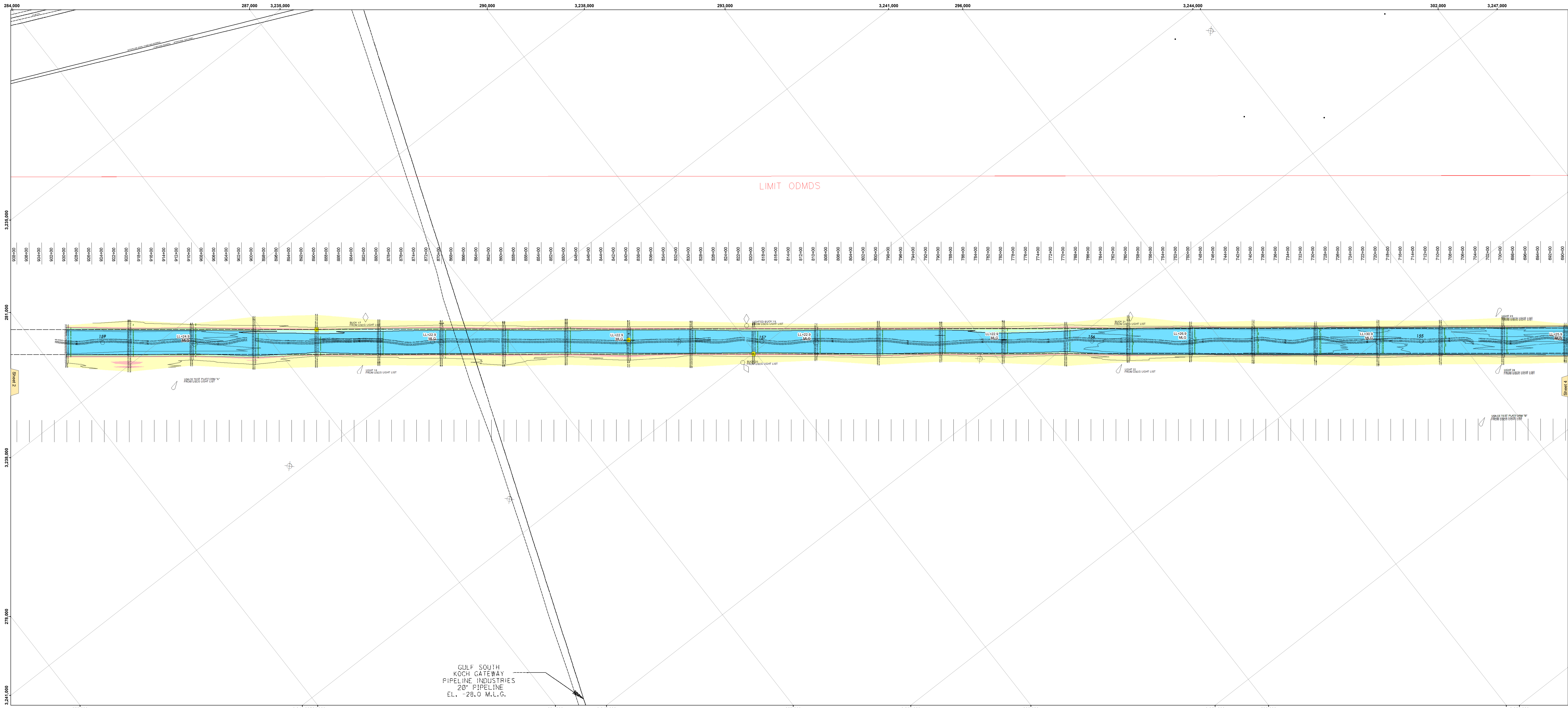
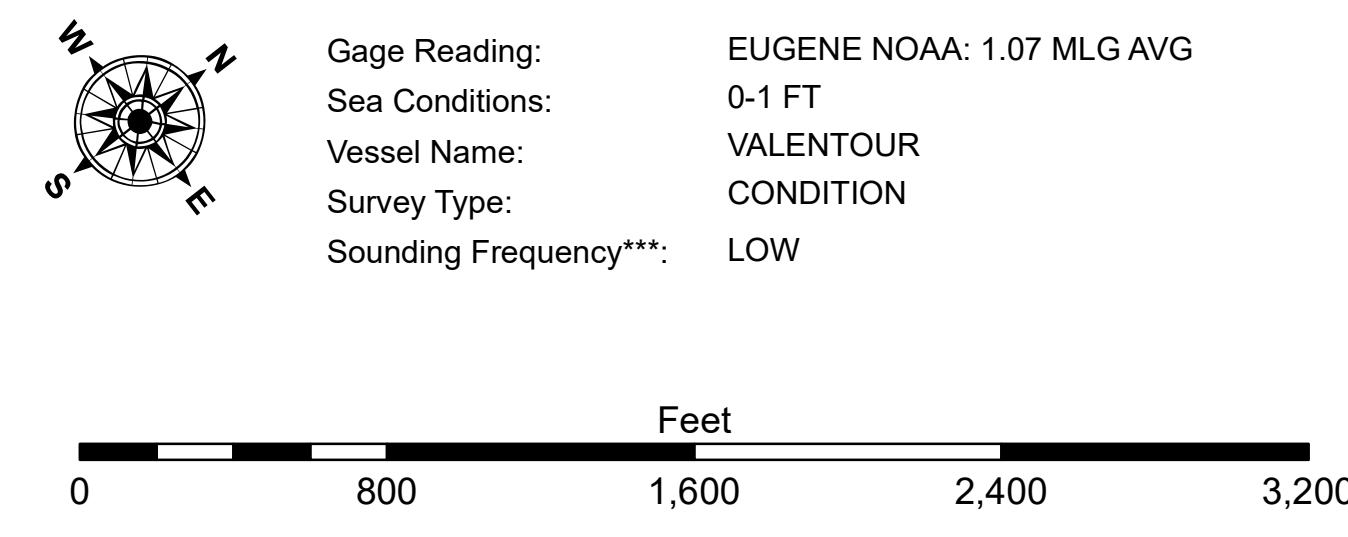




US Army Corps of Engineers  
District: CEMVN



LEGEND			
	Federal Navigation Channel		Cable Area
	Federal Navigation Center Line		Placement Area
	As-built Pipeline/Cable		Anchorage Area
	Unconfirmed Pipeline/Cable		Obstruction Point
	Project Depth Contour		Wrecks-Submerged
	Borrow Area		Shoalest Sounding**
	Beacon, General		Red Navigation Buoy
	Green Navigation Buoy		Fluff Thickness*
			-12' and above
			-12' to -15'
			-15' to -18'
			-18' to -20'
			-20' and below
			3



**NOTES:**  
 Horizontal Coordinate System:  
 North American Datum of 1983 (NAD83), projected to the State Plane  
 Coordinate System (SPCS), Louisiana South Zone. Distance units in U.S. Survey Feet.  
 Vertical Datum:  
 Soundings are shown in feet and indicate depths below Mean Low Gulf Datum (MLG).  
 Datum Relationships for the gauge 88600 as of August 2013:  
 0.0' NAVD83 = 0.0' MLLW = 1.5' MLG  
 Distances on the Atchafalaya River are shown at 1 mile intervals.  
 The location of navigation aids are based on and provided by the U.S. Coast Guard.  
 2013 Aerial Photography data source: GEOCLIP, Atlantic Group, LLC. (1998 DOQQ imagery in green).  
 Reference is N.O.A.A. Navigation Chart No. 11354.  
 \* Difference between high and low frequency elevations where greater than 1.0'.  
 \*\* Shoalest Sounding per Quarter per Reach.  
 \*\*\* High frequency (200 kHz) survey data represents the first signal return as a sounding location and will include suspended solids, known as "fluff", if present. Low frequency (20 kHz) survey data normally penetrates through this "fluff" layer to depict elevations of consolidated bottom material. Low frequency accuracies may vary depending on channel conditions and bathymetry settings.

**DISCLAIMER:** The United States Government neither recommends nor endorses any commercial products or services, nor makes any warranty, expressed or implied, with respect to the accuracy, reliability, or completeness of the information contained herein. The use of the information herein is at the user's own risk. The United States Government assumes no liability for any damage or loss, whether direct or indirect, arising from the use of the information herein. The information herein is provided for informational purposes only and is not intended for use in any other context. The information herein is not to be used for any purpose other than that for which it was intended. The information herein is not to be used for any purpose other than that for which it was intended. The information herein is not to be used for any purpose other than that for which it was intended.

U.S. ARMY CORPS OF ENGINEERS NEW ORLEANS DISTRICT			
Submitted:	Checked By:	Drawn By:	Checked By:
	ADAMSCHAMPINE	JH	JH
Chief, Survey Section	Chief, Survey Section	Chief, Survey Section	Chief, Survey Section

ATCHAFALAYA RIVER  
 BAR CHANNEL  
 AR\_03\_BAR\_20250107\_CS  
 07 January 2025

Sheet Reference Number  
 3 of 16