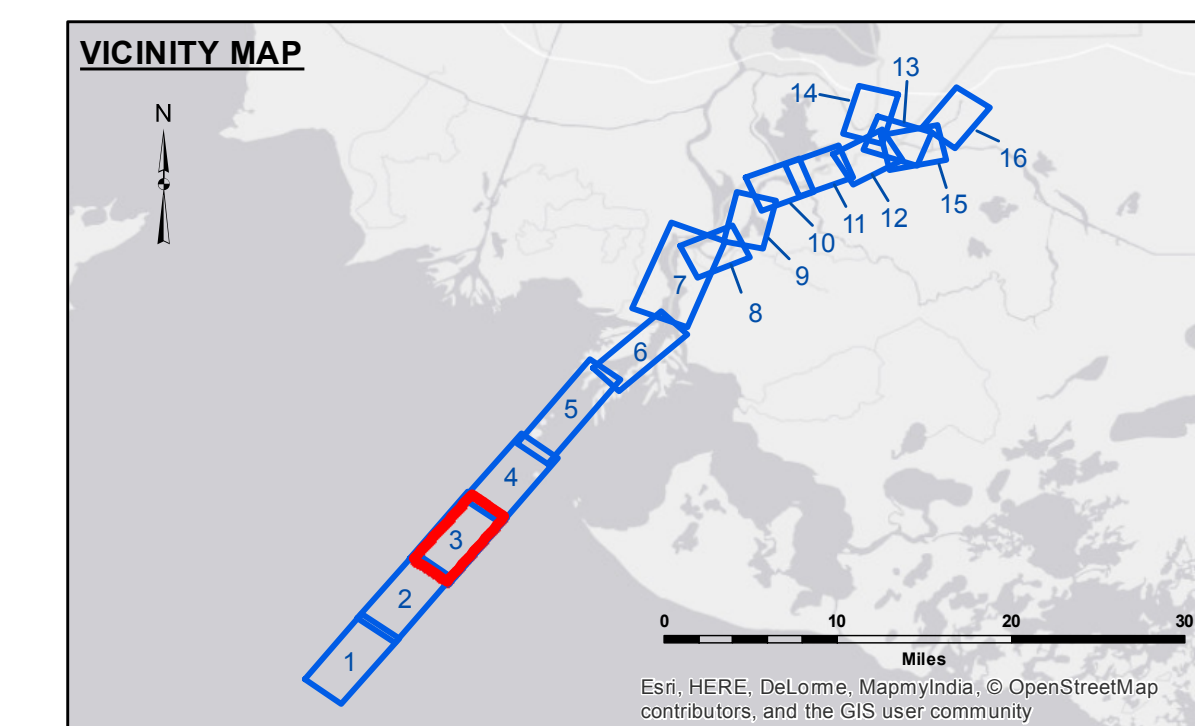
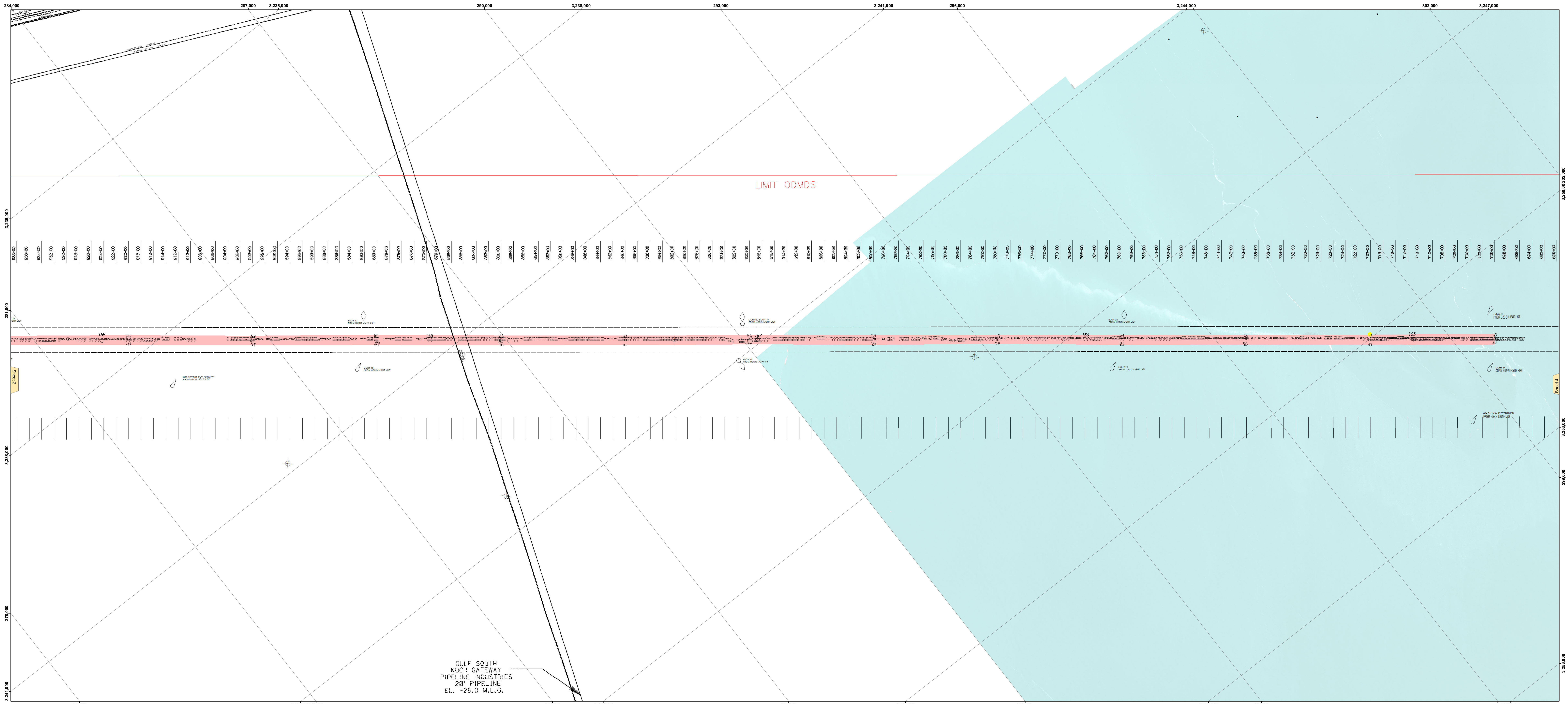




US Army Corps of Engineers
District: CEMVN

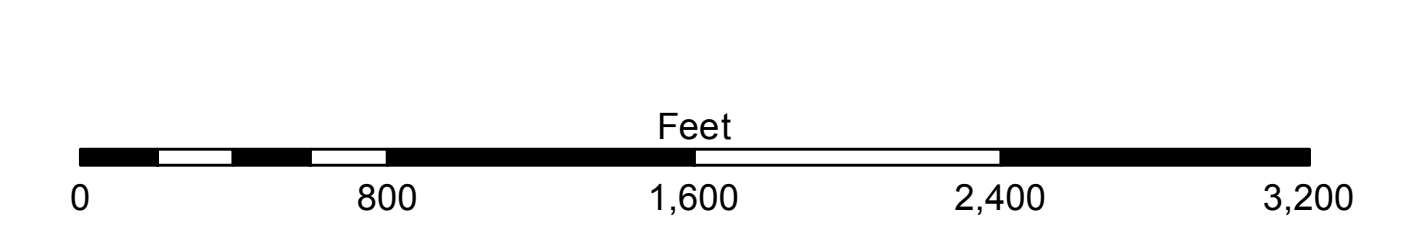


LEGEND

--- Federal Navigation Channel	--- Cable Area	□ Borrow Area	■ -15' and above
— Federal Navigation Center Line	■ Placement Area	● Shoalest Sounding**	■ -15' to -20'
— As-built Pipeline/Cable	⊠ Anchorage Area	★ Beacon, General	■ -20' and below
..... Unconfirmed Pipeline/Cable	⊗ Obstruction Point	◆ Red Navigation Buoy	3 Fluff Thickness*
— Project Depth Contour	⚓ Wrecks-Submerged	◆ Green Navigation Buoy	

This data was collected in cooperation with the Port of Morgan City.
The Port of Morgan City is not responsible for errors or omissions contained in this data set.

Gage Reading: EUGENE ISLAND: 3.0/2.6 MLG
 Sea Conditions: CALM
 Vessel Name: MC OB
 Survey Type: CONDITION RHEOTUNE
 Sounding Frequency: N/A



NOTES:
 Horizontal Coordinate System:
 North American Datum of 1983 (NAD83), projected to the State Plane
 Coordinate System (SPCS), Louisiana South Zone. Distance units in U.S. Survey Feet.
 Vertical Datum:
 Soundings are shown in feet and indicate depths below Mean Low Gulf Datum (MLG).
 Datum Relationships for the gage 88600 as of August 2013:
 0.0' NAVD83 = 0.0' MLW = 1.5' MLG
 Distances on the Atchafalaya River are shown at 1 mile intervals.
 The location of navigation aids are based on and provided by the U.S. Coast Guard.
 2013 Aerial Photography data source: GEOCLIP, Atlantic Group, LLC. (1998 DOQQ imagery in green).
 Reference is N.O.A.A. Navigation Chart No. 11354.
 * Difference between high and low frequency elevations where greater than 1.0'.
 ** Shoalest Sounding per Quarter per Reach.
 *** High frequency (200 kHz) survey data represents the first signal return at a sounding location and will include suspended solids, known as "fluff", if present. Low frequency (20 kHz) survey data normally penetrates through this "fluff" layer to depict elevations of consolidated bottom material. Low frequency accuracies may vary depending on channel conditions and bathymetry settings.

DISCLAIMER: The United States Government neither endorses nor recommends the use of any product or service, nor makes any warranty, expressed or implied, with respect to the accuracy, reliability, or completeness of the information provided. The user assumes all liability for any damage or loss resulting from the use of this information. The United States Government is not responsible for any errors or omissions in this information. The user assumes all liability for any damage or loss resulting from the use of this information. The United States Government is not responsible for any errors or omissions in this information. The user assumes all liability for any damage or loss resulting from the use of this information.

Submitted By:	Approved By:
AO MS SR II DR PS	AO
Checked By:	Checked By:
AO	AO

**ATCHAFALAYA RIVER
 BAR CHANNEL DENSITY SURVEY
 AR_03_DEN_20170420_CS
 20 April 2017**

**Sheet Reference Number
 3 of 16**