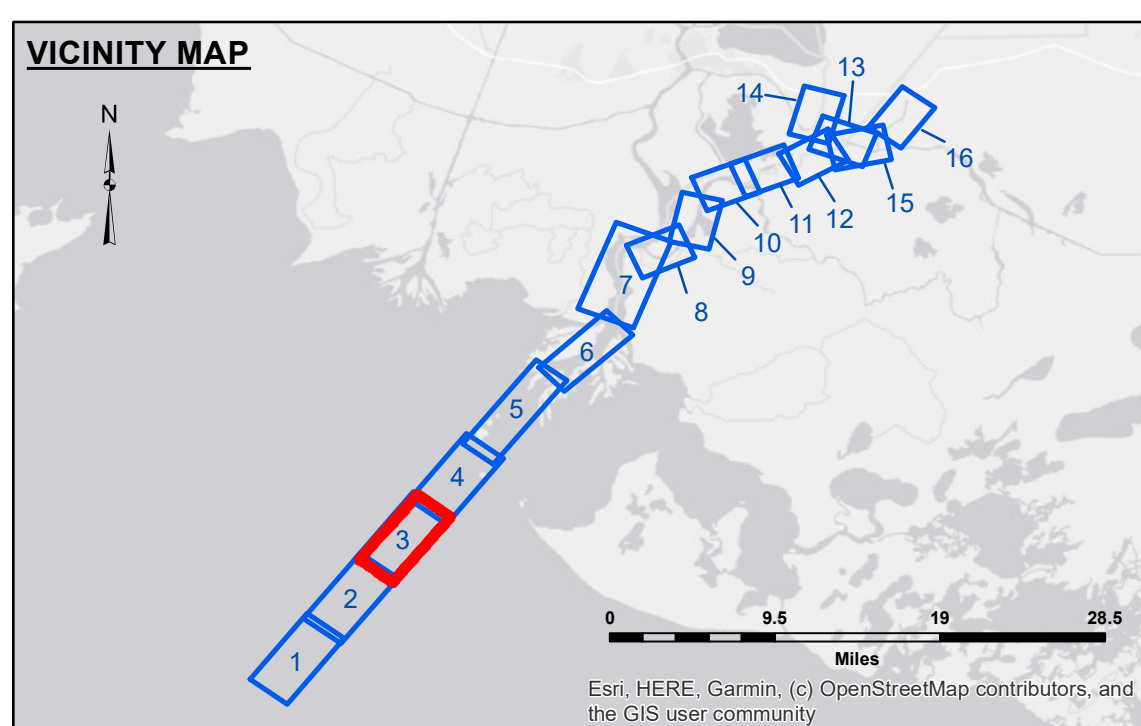


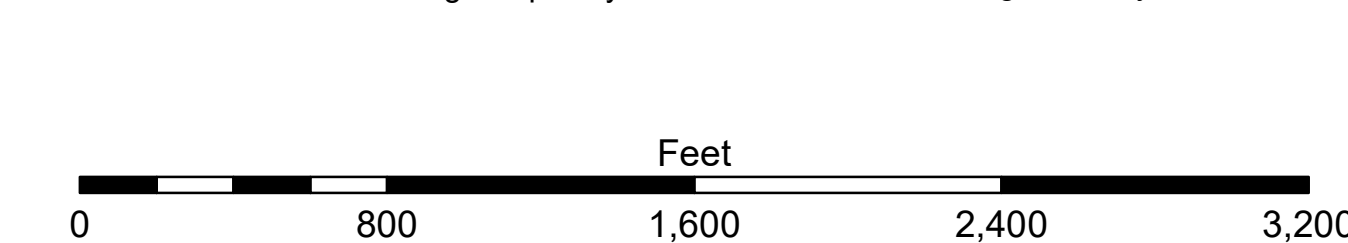
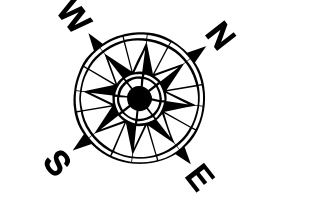
1) RHEOTUNE MEASUREMENTS PERFORMED AT: CENTER, 30' WEST, 60' WEST, 90' WEST. 2) MISSING ELEVATIONS RESULTING FROM PROBE NOT REACHING THE 1200 G/L HORIZON.

GULF SOUTH KOCH GATEWAY PIPELINE INDUSTRIES 20" PIPELINE EL. -28.0 M.L.G.



LEGEND table with symbols for Federal Navigation Channel, Cable Area, Borrow Area, Shoalest Sounding, Beacon, Red Navigation Buoy, Green Navigation Buoy, Placement Area, Anchorage Area, Obstruction Point, Wrecks-Submerged, and various sounding and measurement symbols.

This data was collected in cooperation with the Port of Morgan City. The Port of Morgan City is not responsible for errors or omissions contained in this data set.



Gage Reading: EUGENE: 2.8 MLG AVG. Sea Conditions: CALM. Vessel Name: M/V VALENTOUR. Survey Type: CONDITION, RHEO. Sounding Frequency: Elevations at 1200 g/L density.

NOTES: Horizontal Coordinate System: North American Datum of 1983 (NAD83), projected to the State Plane Coordinate System (SPCS), Louisiana South Zone. Vertical Datum: Soundings are shown in feet and indicate depths below Mean Low Gulf Datum (MLG). Reference is N.O.A.A. Navigation Chart No. 11354. ** Shoalest Sounding per Quarter per Reach.

Disclaimer: The United States Government... This data was collected in cooperation with the Port of Morgan City. The Port of Morgan City is not responsible for errors or omissions contained in this data set.

Administrative table with columns for Date, Prepared By, Checked By, and other project details.

ATCHAFALAYA RIVER BAR CHANNEL DENSITY SURVEY AR_03_DEN_20200207_CS 07 February 2020

Sheet Reference Number 3 of 16