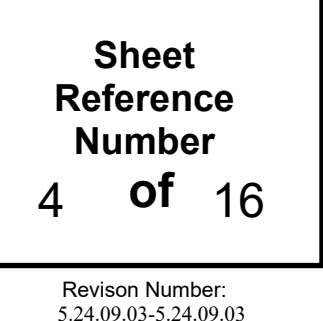


ATCHAFALAYA RIVER  
BAR CHANNEL  
AR\_04\_BAR\_20250327\_CS  
27 March 2025



**NOTES:**  
**Horizontal Coordinate System:**  
 North American Datum of 1983 (NAD83), projected to the State Plane  
 Coordinate System (SPCS), Louisiana South Zone. Distance units in U.S. Survey Feet.  
**Vertical Datum:**  
 Soundings are based in feet and indicate depths below Mean Low Gulf Datum (MLG).  
 Data are representative for the year 1860 as of August 2013.  
 $0.00 \text{ NAVD83} = 0.6 \text{ MLW} = 1.5 \text{ MLG}$   
 Distances on the Atchafalaya River are shown at 1 mile intervals.  
 The location of navigation aids are based on and provided by the U.S. Coast Guard.  
 2019 Aerial Photography data source: PAR, LLC, (1998 DOQQ imagery in green).  
 Reference is N.O.A.A. Navigation Chart No. 11354.  
 Difference between high and low frequency elevations where greater than 1.0'.  
 \*\* Samehold Survey per Quarter per Reach.  
 \*\*\* High frequency (200 kHz) data represents the first signal return at a sounding location and will include suspended solids, known as "fluff", in channel. Low frequency (20 kHz) data represents the bottom of the channel and will include elevations of consolidated material. Low frequency accuracies may vary depending on current conditions and false bottom.