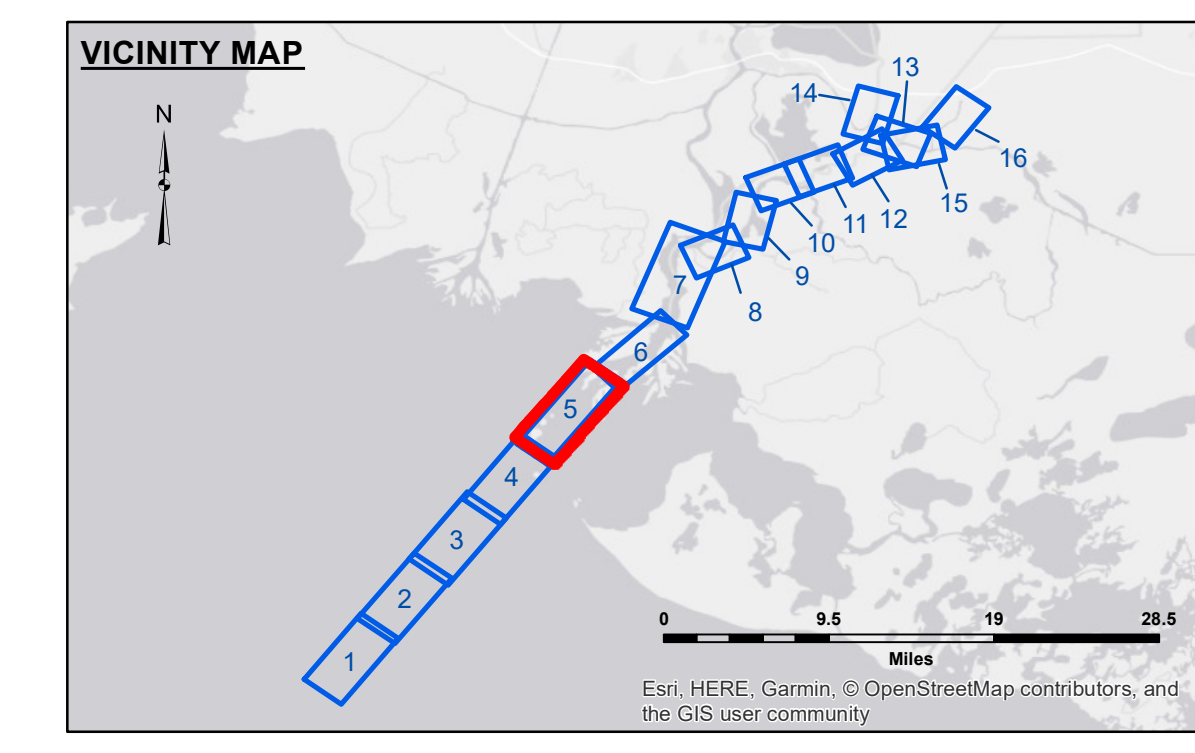
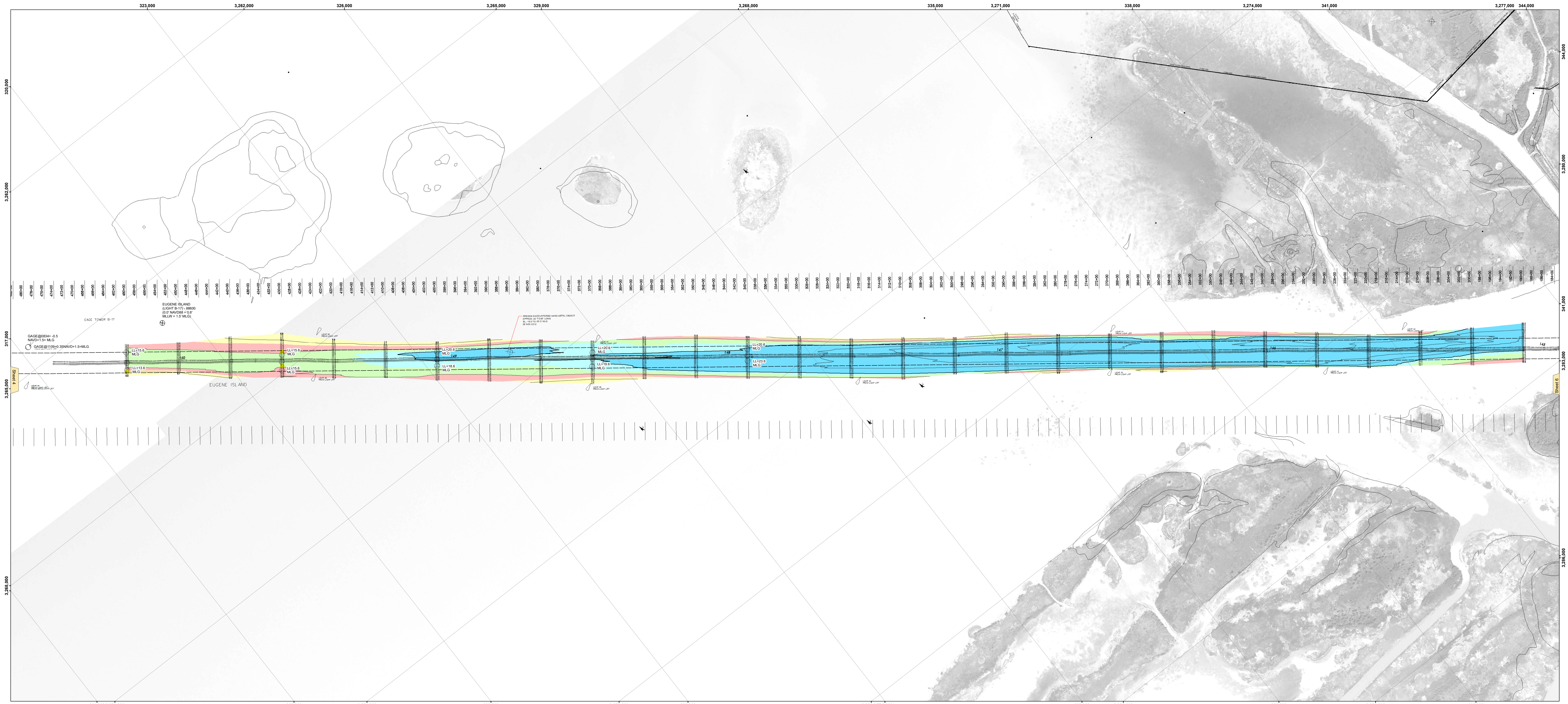


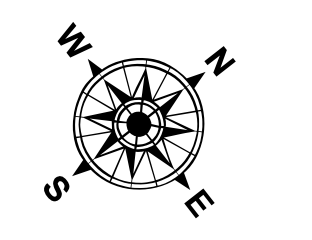


US Army Corps of Engineers District: CEMVN

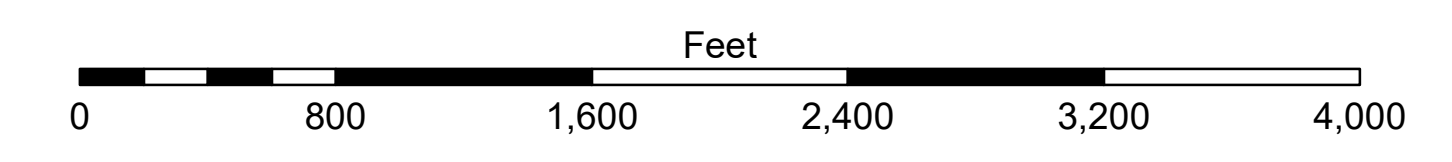


**LEGEND**

--- Federal Navigation Channel	--- Cable Area	□ Borrow Area	■ -12' and above
— Federal Navigation Center Line	■ Placement Area	● Shoalest Sounding**	■ -12' to -15'
— As-built Pipeline/Cable	□ Anchorage Area	★ Beacon, General	■ -15' to -18'
--- Unconfirmed Pipeline/Cable	⊗ Obstruction Point	◆ Red Navigation Buoy	■ -18' to -20'
— Project Depth Contour	⚡ Wrecks-Submerged	◆ Green Navigation Buoy	■ -20' and below
			3 Fluff Thickness*



Gage Reading: EUGENE ISLAND: 1.4 MLG AVG  
 Sea Conditions: CALM  
 Vessel Name: OB-189  
 Survey Type: CONDITION  
 Sounding Frequency\*\*\*: LOW



**NOTES:**  
 Horizontal Coordinate System:  
 North American Datum of 1983 (NAD83), projected to the State Plane Coordinate System (SPCS), Louisiana South Zone. Distance units in U.S. Survey Feet.  
 Vertical Datum:  
 Soundings are shown in feet and indicate depths below Mean Low Gulf Datum (MLG). Datum Relationships for the gage 88600 as of August 2013:  
 0.0' NAVD83 = 0.6' MLW = 1.5' MLG  
 Distances on the Atchafalaya River are shown at 1 mile intervals.  
 The location of navigation aids are based on and provided by the U.S. Coast Guard.  
 2015 Aerial Photography data source: GEOCLIP, Atlantic Group, LLC. (1998 DOQQ imagery in green). Reference is N.O.A.A. Navigation Chart No. 11354.  
 \*\*\* Shoalest Sounding per Quarter per Reach.  
 \*\*\* High frequency (200 kHz) survey data represents the first signal return of a sounding location and will include suspended solids, known as 'fluff', if present. Low frequency (20 kHz) survey data normally penetrates through this 'fluff' layer to depict elevations of consolidated bottom material. Low frequency accuracies may vary depending on channel conditions and bathymetric settings.

U.S. ARMY CORPS OF ENGINEERS  
 NEW ORLEANS DISTRICT

Submitted By: SP/A  
 Recommended By: AO  
 Approved By: AO

Checked By: AO

**ATCHAFALAYA RIVER  
 LOWER BAY CHANNEL  
 AR\_05\_BAY\_20181121\_CS  
 21 November 2018**

Sheet Reference Number  
**5 of 16**

Revision Number:  
 3.12-20180811