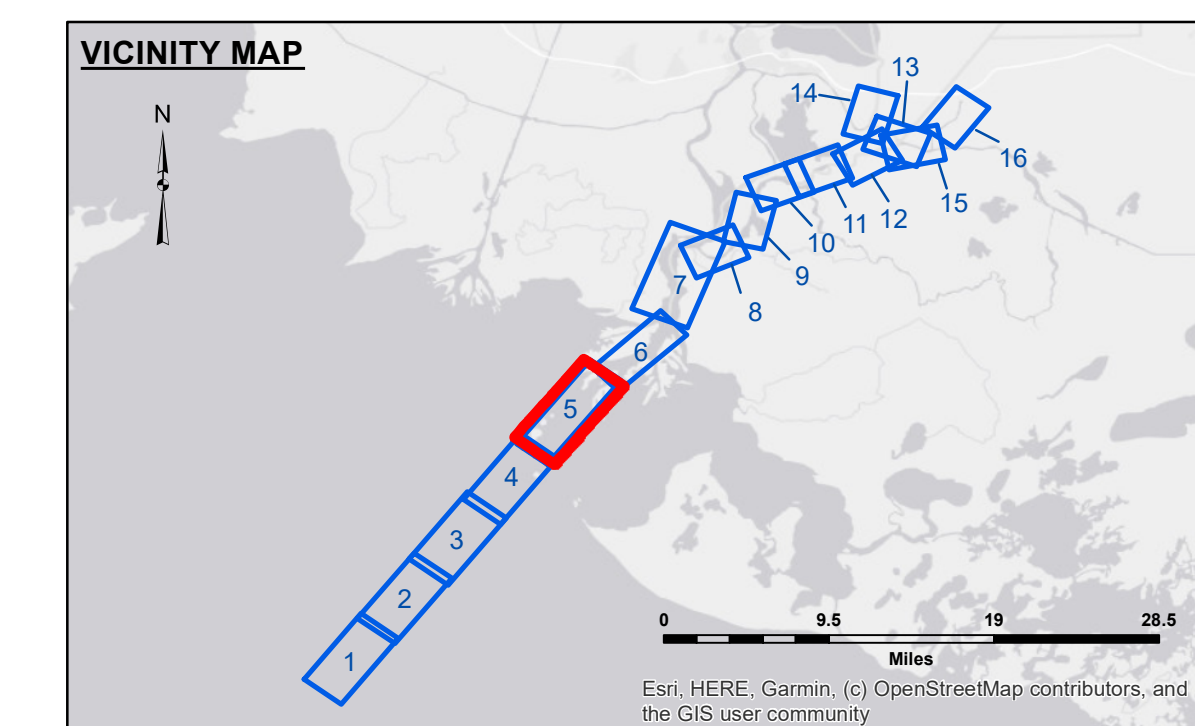
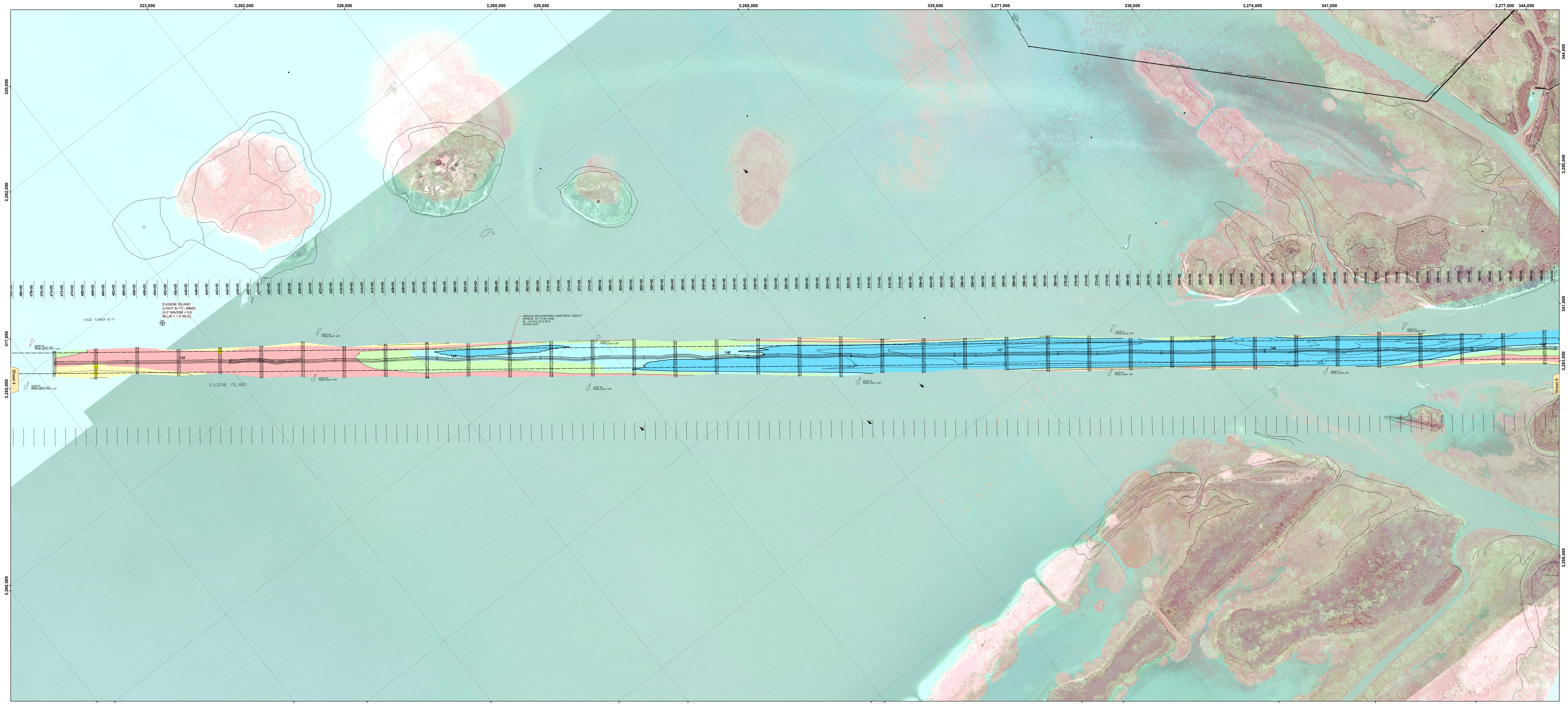


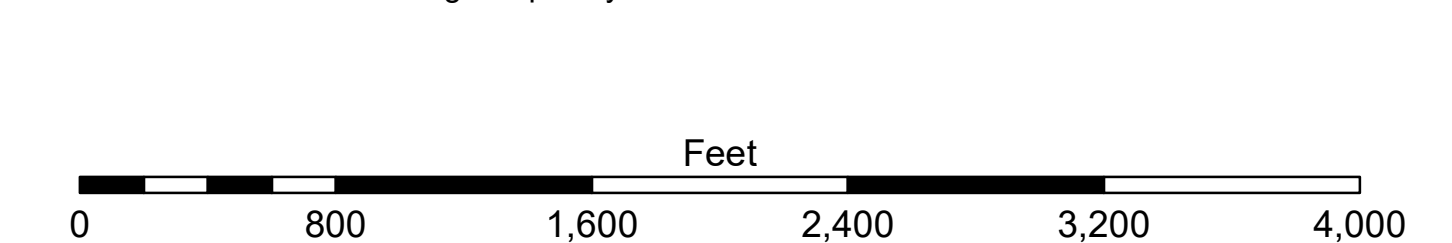
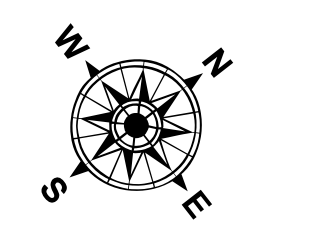


US Army Corps of Engineers District: CEMVN



LEGEND

| | | | |
|----------------------------------|---------------------|-------------------------|--------------------|
| --- Federal Navigation Channel | --- Cable Area | □ Borrow Area | ■ -12' and above |
| — Federal Navigation Center Line | ■ Placement Area | ● Shoalest Sounding** | ■ -12' to -15' |
| — As-built Pipeline/Cable | □ Anchorage Area | ★ Beacon, General | ■ -15' to -18' |
| --- Unconfirmed Pipeline/Cable | ⊗ Obstruction Point | ★ Red Navigation Buoy | ■ -18' to -20' |
| — Project Depth Contour | ⚓ Wrecks-Submerged | ★ Green Navigation Buoy | ■ -20' and below |
| | | | 3 Fluff Thickness* |



Gage Reading: EUGENE ISLAND: 1.91 MLG
 Sea Conditions: CALM
 Vessel Name: OB-189
 Survey Type: CONDITION
 Sounding Frequency***: LOW

NOTES:
 Horizontal Coordinate System:
 North American Datum of 1983 (NAD83), projected to the State Plane Coordinate System (SPCS), Louisiana South Zone. Distance units in U.S. Survey Feet.
 Vertical Datum:
 Soundings are shown in feet and indicate depths below Mean Low Gull Datum (MLG). Datum Relationships for the gage 88600 as of August 2013:
 0.0' NAVD83 = 0.6' MLW = 1.5' MLG
 Distances on the Atchafalaya River are shown at 1 mile intervals.
 The location of navigation aids are based on and provided by the U.S. Coast Guard.
 2015 Aerial Photography data source: GEOCLIP, Atlantic Group, LLC. (1998 DOQQ imagery in green). Reference is N.O.A.A. Navigation Chart No. 11354.
 *** Shoalest Sounding per Quarter per Reach.
 *** High frequency (200 kHz) survey data represents the first signal return of a sounding location and will include suspended solids, known as "fluff", if present. Low frequency (20 kHz) survey data normally penetrates through this "fluff" layer to depict elevations of consolidated bottom material. Low frequency accuracies may vary depending on channel conditions and bathymetric settings.

DISTANCE - The United States Government neither warrants nor makes any representation as to the accuracy or completeness of the data or information contained herein. The user of this data is advised that the data is provided for informational purposes only and is not intended for use in any legal proceeding. The user of this data is advised that the data is provided for informational purposes only and is not intended for use in any legal proceeding. The user of this data is advised that the data is provided for informational purposes only and is not intended for use in any legal proceeding.

U.S. ARMY CORPS OF ENGINEERS
 NEW ORLEANS DISTRICT

| | |
|---------------|----------------|
| Submitted By: | RYLAND HOSHMAN |
| Reviewed By: | BY ID |
| Approved By: | AO |

**ATCHAFALAYA RIVER
 LOWER BAY CHANNEL
 AR_05_BAY_20190320_CS
 20 March 2019**

Sheet Reference Number
5 of 16

Revision Number:
 5.12-20190811