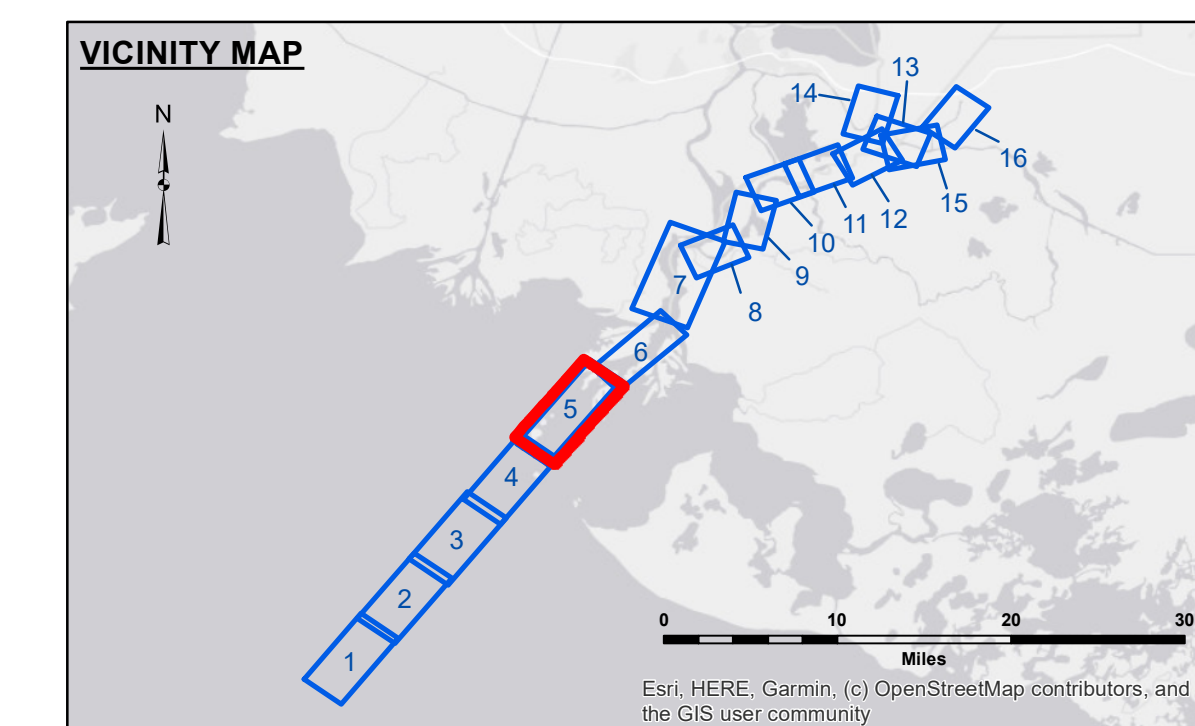
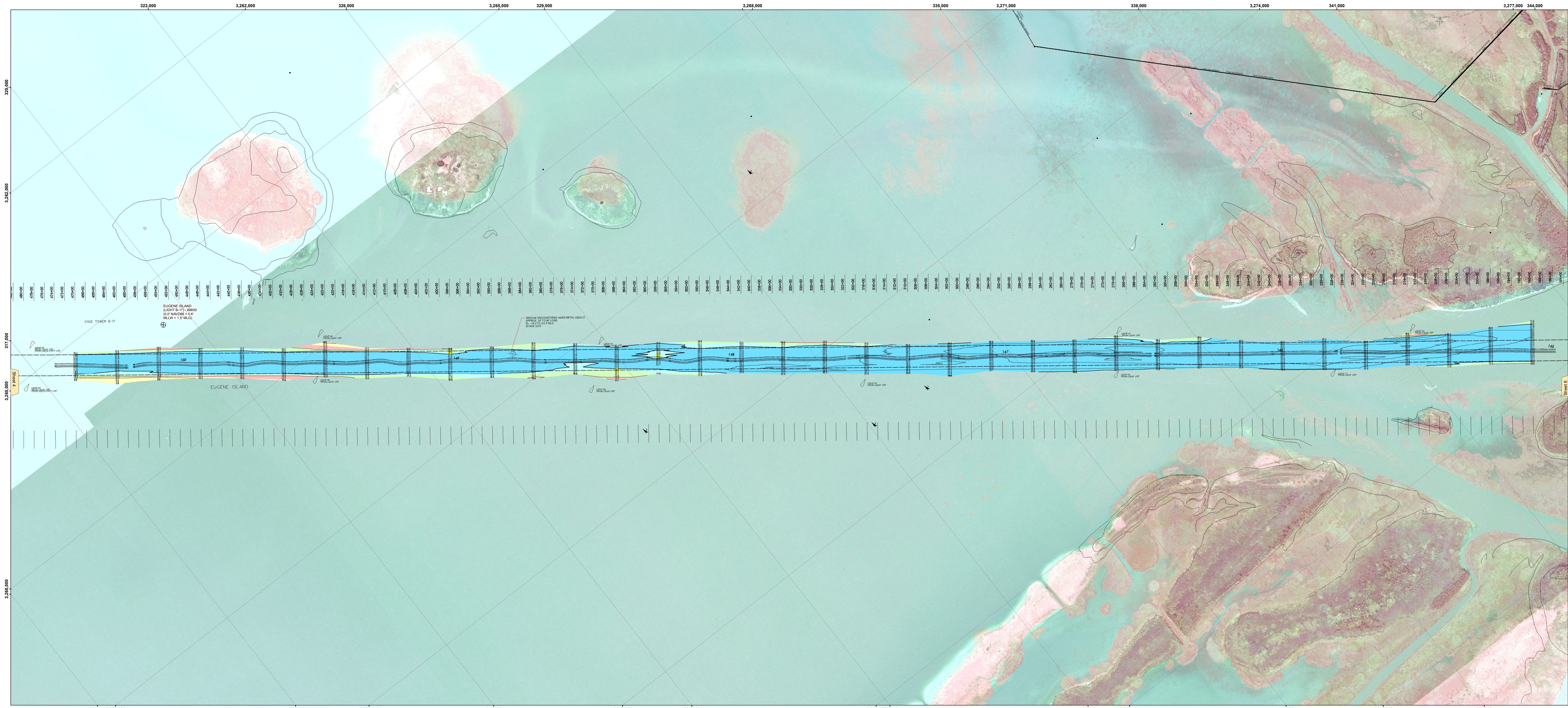


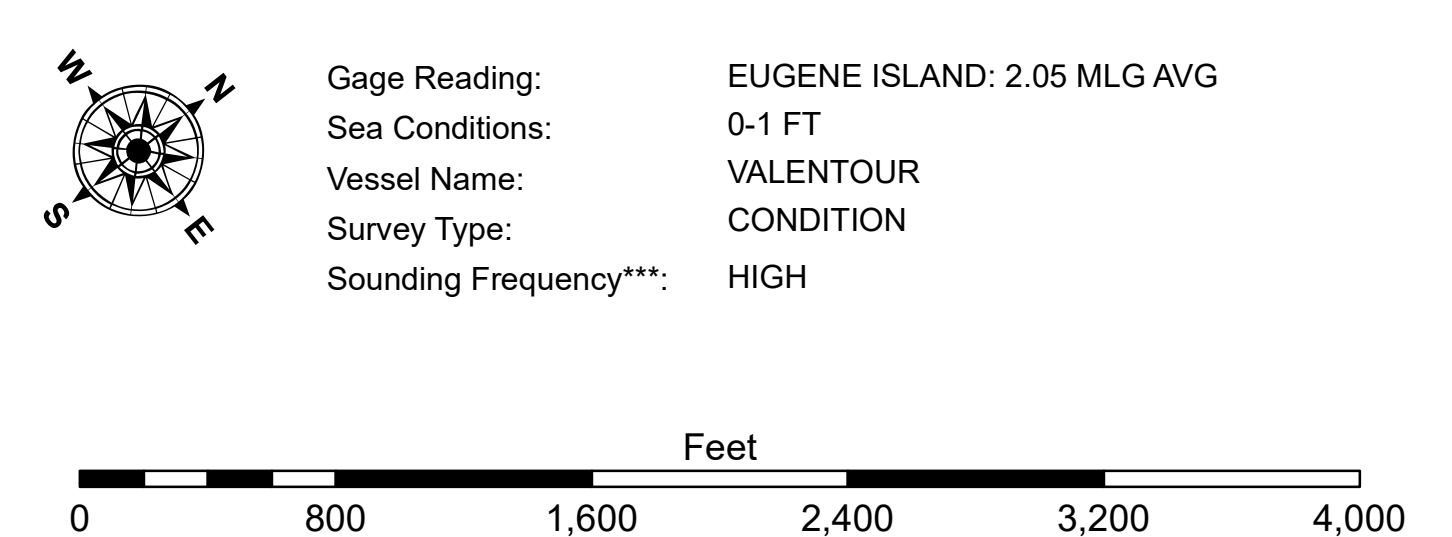


US Army Corps of Engineers District: CEMVN



LEGEND

--- Federal Navigation Channel	--- Cable Area	□ Borrow Area	■ -12' and above
— Federal Navigation Center Line	■ Placement Area	● Shoalest Sounding**	■ -12' to -15'
— As-built Pipeline/Cable	□ Anchorage Area	★ Beacon, General	■ -15' to -18'
--- Unconfirmed Pipeline/Cable	⊗ Obstruction Point	◆ Red Navigation Buoy	■ -18' to -20'
— Project Depth Contour	⚓ Wrecks-Submerged	◆ Green Navigation Buoy	■ -20' and below
			3 Fluff Thickness*



NOTES:

Distribution Liability: The data presented herein is for informational purposes only and does not constitute a warranty of any kind. The user assumes all liability for the use of the data for any purpose other than that intended by the Corps of Engineers. The Corps of Engineers is not responsible for any damage or loss resulting from the use of the data for any purpose other than that intended by the Corps of Engineers.

Chart Comments: Bathymetric survey data is subject to change. Users should verify the accuracy of the data for their specific application. The data is provided as a service to the user and is not intended to be used for any purpose other than that intended by the Corps of Engineers.

Sheet 6

U.S. ARMY CORPS OF ENGINEERS
NEW ORLEANS DISTRICT

Submitted:	Checked By:
Recommended:	ADAMSCHAMPINE
Chief, Survey Section:	Placed By:
	JH
Approved:	Checked By:
	JH

**ATCHAFALAYA RIVER
LOWER BAY CHANNEL
AR_05_BAY_20230914_CS
14 September 2023**

Sheet Reference Number
5 of 16

Revision Number:
4.2-20230914