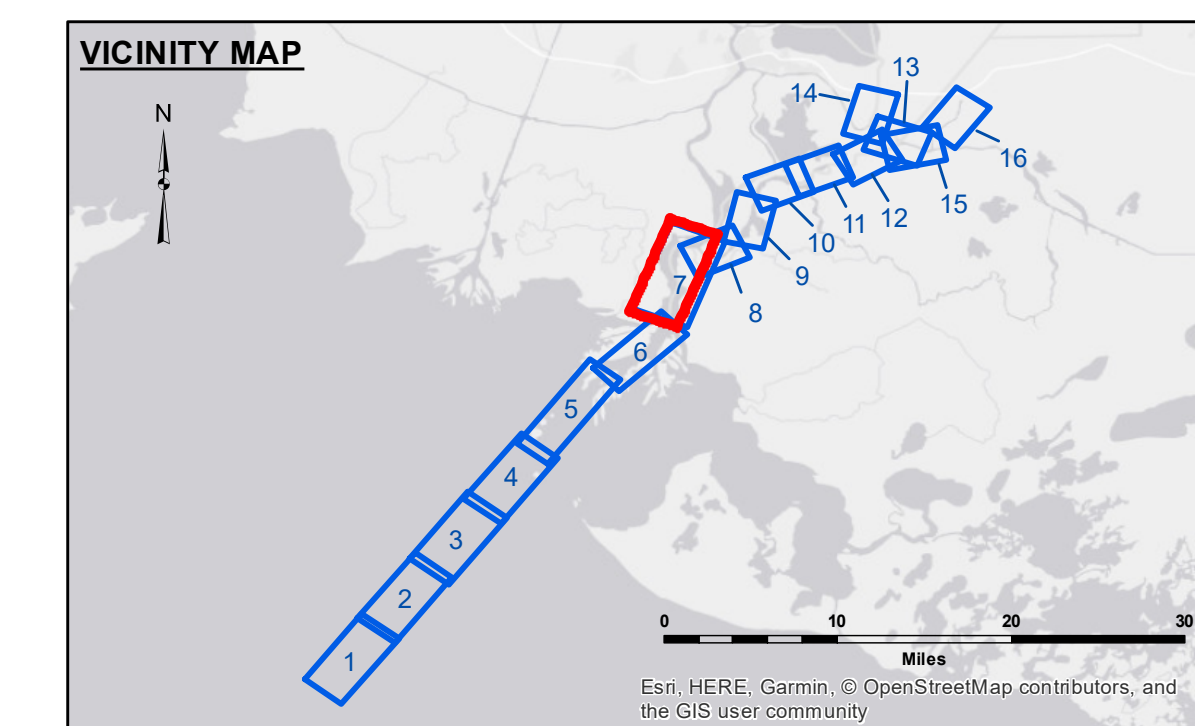
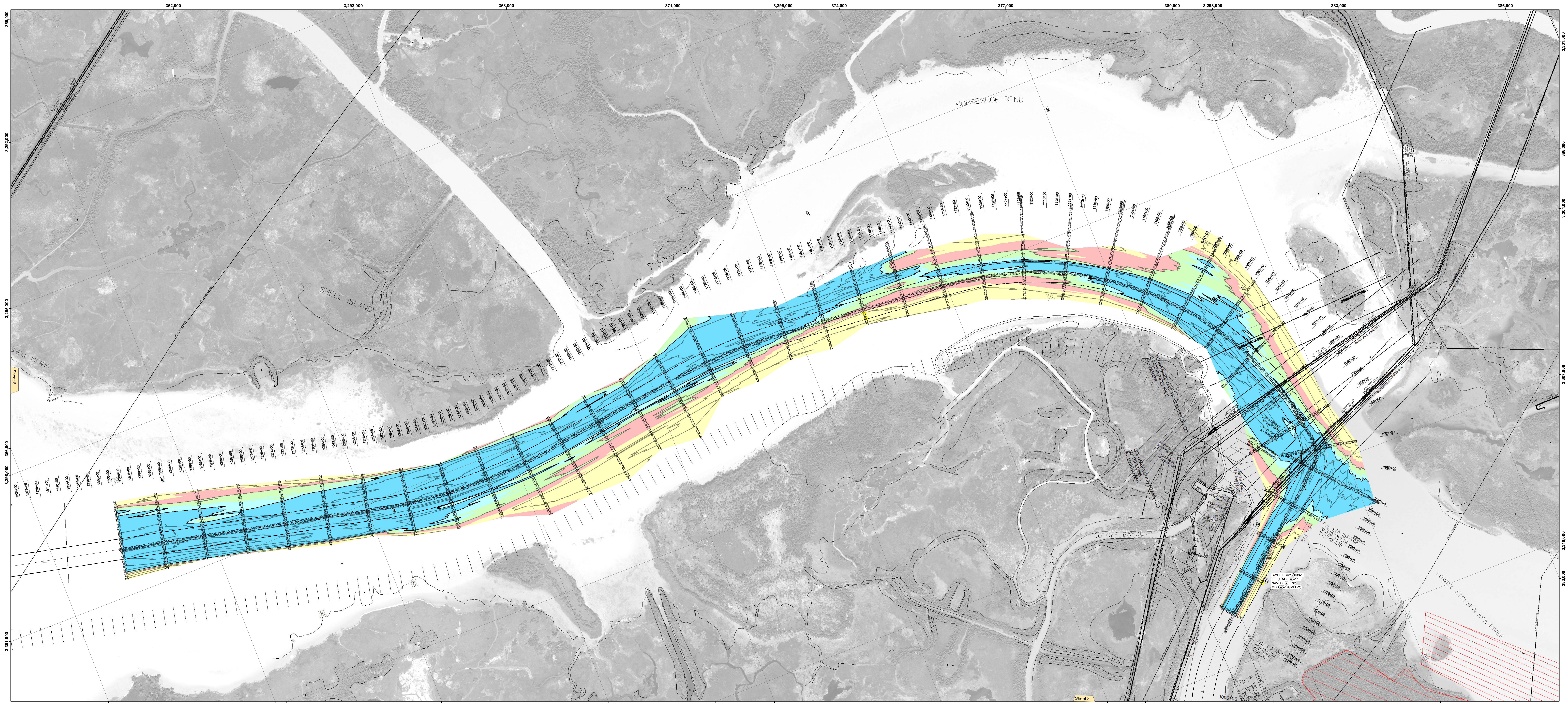




US Army Corps of Engineers District: CEMVN



**LEGEND**

--- Federal Navigation Channel	--- Cable Area	□ Borrow Area	■ -12' and above
— Federal Navigation Center Line	■ Placement Area	● Shoalest Sounding**	■ -12' to -15'
— As-built Pipeline/Cable	□ Anchorage Area	★ Beacon, General	■ -15' to -18'
--- Unconfirmed Pipeline/Cable	⊗ Obstruction Point	◆ Red Navigation Buoy	■ -18' to -20'
— Project Depth Contour	⚓ Wrecks-Submerged	◆ Green Navigation Buoy	■ -20' and below
			3 Fluff Thickness*

Horizontal Coordinate System:  
North American Datum of 1983 (NAD83), projected to the State Plane Coordinate System (SPCS), Louisiana South Zone. Distance units in U.S. Survey Feet.

Vertical Datum:  
Soundings are shown in feet and indicate depths below Mean Low Gulf Datum (MLG). Datum Relationships for page 03022 as of August 2019.  
0.7' MLLW = 0.0' NAVD83 = 2.9' MLG

Distances on the Atchafalaya River are shown at 1 mile intervals.

The location of navigation aids are based on and provided by the U.S. Coast Guard.

2015 Aerial Photography data source: GEOCLIP, Atlantic Group, LLC. (1998 DOQQ imagery in green).

Reference is N.O.A.A. Navigation Chart No. 11354.

\*\* Shoalest Sounding per Quarter per Reach.

\*\*\* High frequency (200 kHz) survey data represents the first signal return at a sounding location and will include suspended solids, known as "fluff", if present. Low frequency (20 kHz) survey data normally penetrates through this "fluff" layer to depict elevations of consolidated bottom material. Low frequency accuracies may vary depending on channel conditions and bathymeter settings.

Gage Reading: SWEET BAY: 7.18 MLG  
Sea Conditions: CALM  
Vessel Name: OB-167  
Survey Type: CONDITION  
Sounding Frequency\*\*\*: LOW

Scale: 0 800 1,600 2,400 3,200 4,000 Feet

**NOTES:**

Horizontal Coordinate System:  
North American Datum of 1983 (NAD83), projected to the State Plane Coordinate System (SPCS), Louisiana South Zone. Distance units in U.S. Survey Feet.

Vertical Datum:  
Soundings are shown in feet and indicate depths below Mean Low Gulf Datum (MLG). Datum Relationships for page 03022 as of August 2019.  
0.7' MLLW = 0.0' NAVD83 = 2.9' MLG

Distances on the Atchafalaya River are shown at 1 mile intervals.

The location of navigation aids are based on and provided by the U.S. Coast Guard.

2015 Aerial Photography data source: GEOCLIP, Atlantic Group, LLC. (1998 DOQQ imagery in green).

Reference is N.O.A.A. Navigation Chart No. 11354.

\*\* Shoalest Sounding per Quarter per Reach.

\*\*\* High frequency (200 kHz) survey data represents the first signal return at a sounding location and will include suspended solids, known as "fluff", if present. Low frequency (20 kHz) survey data normally penetrates through this "fluff" layer to depict elevations of consolidated bottom material. Low frequency accuracies may vary depending on channel conditions and bathymeter settings.

**DISCLAIMER:** The United States Government neither warrants nor makes any representation as to the accuracy or reliability of the information provided by the U.S. Army Corps of Engineers. The information is provided for informational purposes only and is not intended to be used for any purpose other than that intended by the U.S. Army Corps of Engineers. The user assumes all liability for any use of the information provided. The U.S. Army Corps of Engineers is not responsible for any errors or omissions in this document. The information is provided as is and without warranty. The U.S. Army Corps of Engineers is not responsible for any damages, including consequential damages, arising from the use of this information. The information is provided for informational purposes only and is not intended to be used for any purpose other than that intended by the U.S. Army Corps of Engineers. The user assumes all liability for any use of the information provided. The U.S. Army Corps of Engineers is not responsible for any errors or omissions in this document. The information is provided as is and without warranty. The U.S. Army Corps of Engineers is not responsible for any damages, including consequential damages, arising from the use of this information.

U.S. ARMY CORPS OF ENGINEERS  
NEW ORLEANS DISTRICT

Author:	Engineer:
Checked:	SPCS
Reviewed:	Project:
Approved:	AO
Checked:	AO

**ATCHAFALAYA RIVER  
CREWBOAT CUT CHANNEL**

AR\_07\_CBC\_20190716\_CS\_POSTSTORM

16 July 2019

Sheet Reference Number  
**7 of 16**

Revision Number:  
1.12-20190811