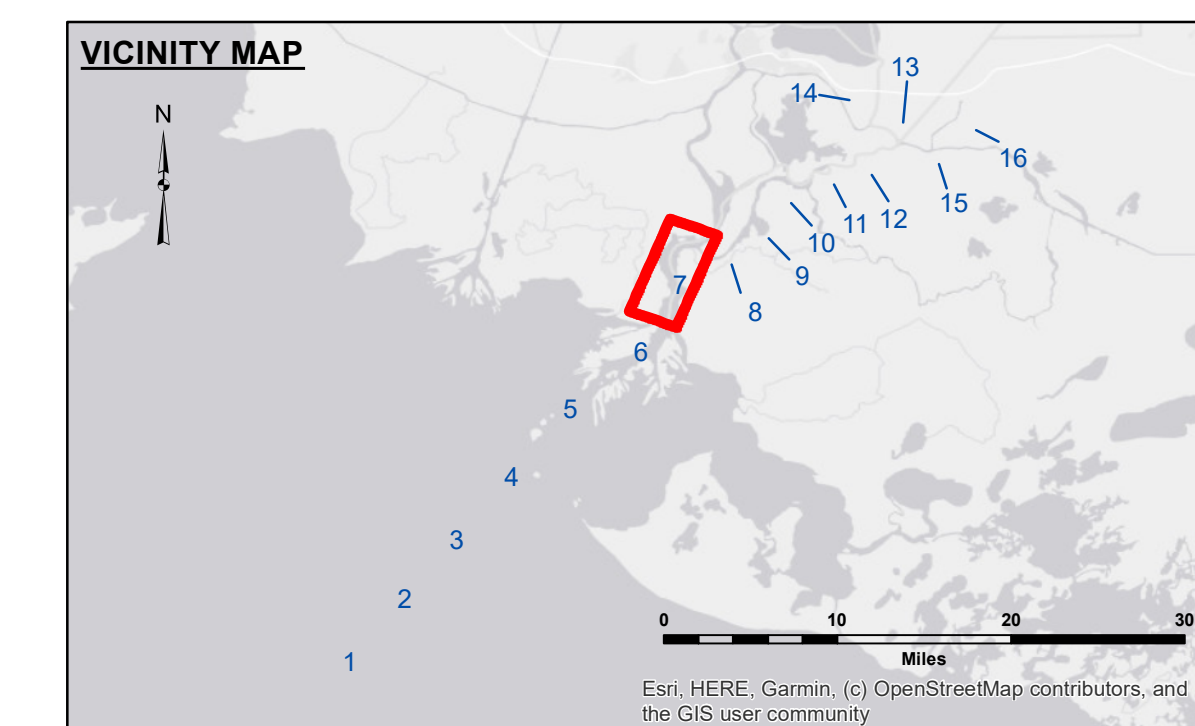
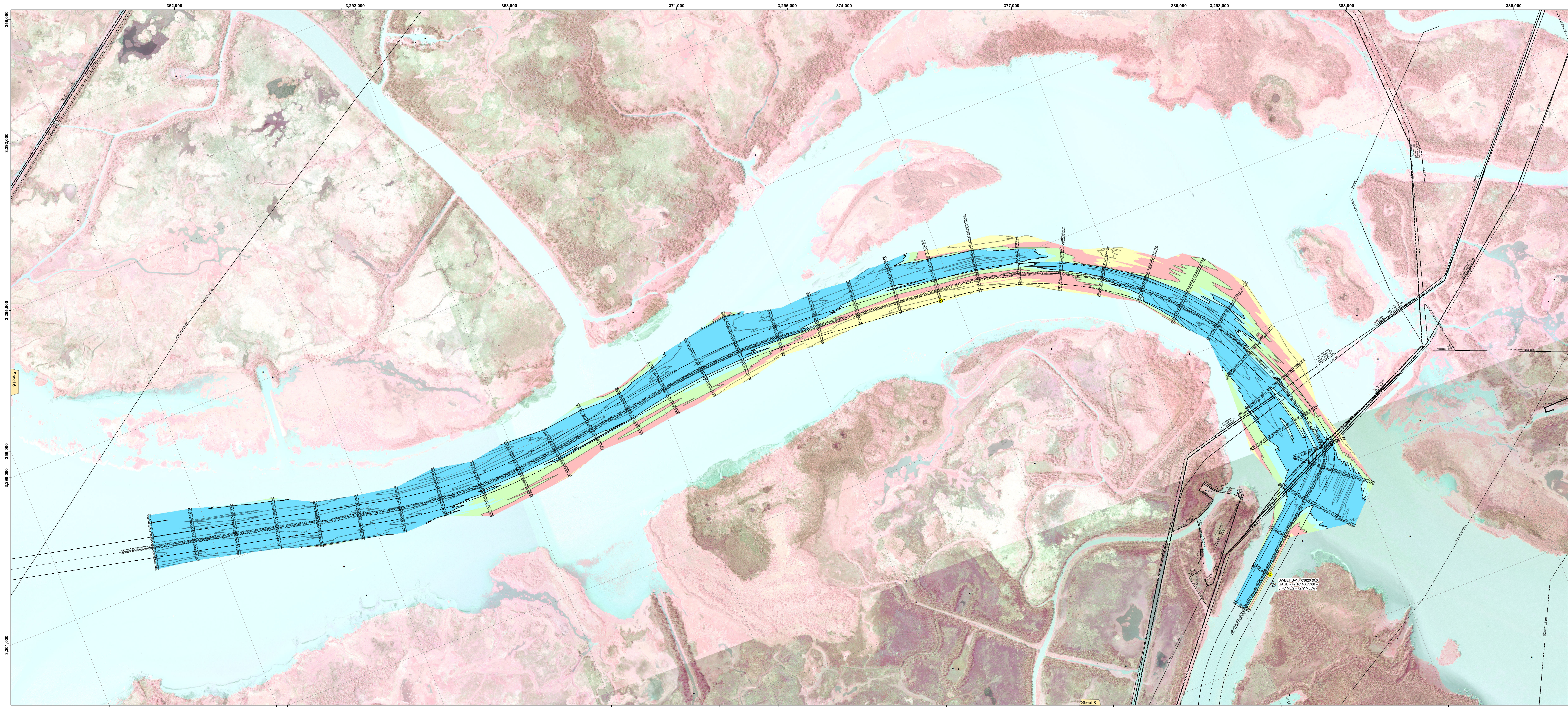




US Army Corps of Engineers
District: CEMVN



| LEGEND | | | |
|--------|--------------------------------|--|-----------------------|
| | Federal Navigation Channel | | Cable Area |
| | Federal Navigation Center Line | | Placement Area |
| | As-built Pipeline/Cable | | Anchorage Area |
| | Unconfirmed Pipeline/Cable | | Obstruction Point |
| | Project Depth Contour | | Wrecks-Submerged |
| | Borrow Area | | Shoalest Sounding** |
| | Beacon, General | | Red Navigation Buoy |
| | Green Navigation Buoy | | -12' and above |
| | | | -12' to -15' |
| | | | -15' to -18' |
| | | | -18' to -20' |
| | | | -20' and below |
| | | | 3 Fluff Thickness* |

Horizontal Coordinate System:
North American Datum of 1983 (NAD83), projected to the State Plane Coordinate System (SPCS), Louisiana South Zone. Distance units in U.S. Survey Feet.

Vertical Datum:
Soundings are shown in feet and indicate depths below Mean Low Gulf Datum (MLG).
Datum Relationships for gage 03820 as of August 2013:
-0.7' MLLW = 0.0' NAVD88 = 2.9' MLG

Distances on the Atchafalaya River are shown at 1 mile intervals.
The location of navigation aids are based on and provided by the U.S. Coast Guard.
2019 Aerial Photography data source: PAR, LLC (1998 DOQQ Imagery in green).
Reference is N.O.A.A. Navigation Chart No. 11354.

** Shoalest Sounding per Quarter per Reach.
*** High frequency (200 kHz) survey data represents the first signal return at a sounding location and will include suspended solids, known as "fluff", if present. Low frequency (20 kHz) survey data normally penetrates through this "fluff" layer to depict elevations of consolidated bottom material. Low frequency accuracies may vary depending on channel conditions and bathymeter settings.

Gage Reading: AVOCA ISLAND: 6.3 MLG
Sea Conditions: CALM
Vessel Name: M/V VALENTOUR
Survey Type: CONDITION
Sounding Frequency**: HIGH

Feet
0 800 1,600 2,400 3,200 4,000

NOTES:
Horizontal Coordinate System:
North American Datum of 1983 (NAD83), projected to the State Plane Coordinate System (SPCS), Louisiana South Zone. Distance units in U.S. Survey Feet.
Vertical Datum:
Soundings are shown in feet and indicate depths below Mean Low Gulf Datum (MLG).
Datum Relationships for gage 03820 as of August 2013:
-0.7' MLLW = 0.0' NAVD88 = 2.9' MLG
Distances on the Atchafalaya River are shown at 1 mile intervals.
The location of navigation aids are based on and provided by the U.S. Coast Guard.
2019 Aerial Photography data source: PAR, LLC (1998 DOQQ Imagery in green).
Reference is N.O.A.A. Navigation Chart No. 11354.
** Shoalest Sounding per Quarter per Reach.
*** High frequency (200 kHz) survey data represents the first signal return at a sounding location and will include suspended solids, known as "fluff", if present. Low frequency (20 kHz) survey data normally penetrates through this "fluff" layer to depict elevations of consolidated bottom material. Low frequency accuracies may vary depending on channel conditions and bathymeter settings.

DISCLAIMER: The United States Government neither endorses nor disendorses any products or services mentioned herein, nor makes any warranty, expressed or implied, regarding the accuracy, reliability, or completeness of the information contained herein. The user of this information assumes all liability for any damage or loss resulting from its use. The United States Government shall not be held responsible for any damage or loss resulting from its use. The user of this information assumes all liability for any damage or loss resulting from its use. The United States Government shall not be held responsible for any damage or loss resulting from its use. The user of this information assumes all liability for any damage or loss resulting from its use.

| | |
|---------------|-------------|
| Submitted By: | RYLAND/DAMS |
| Reviewed By: | |
| Checked By: | |
| Approved By: | |

ATCHAFALAYA RIVER
CREWBOAT CUT CHANNEL
AR_07_CBC_20200521_CS
21 May 2020

Sheet Reference Number
7 of 16