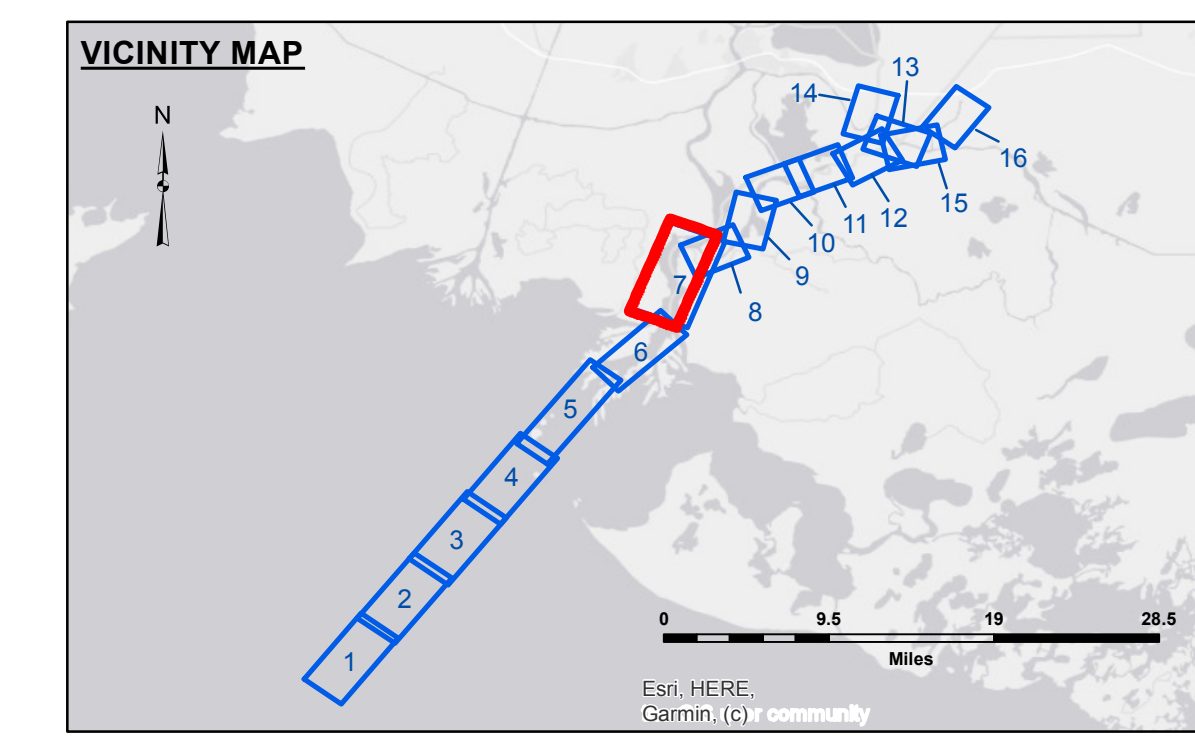
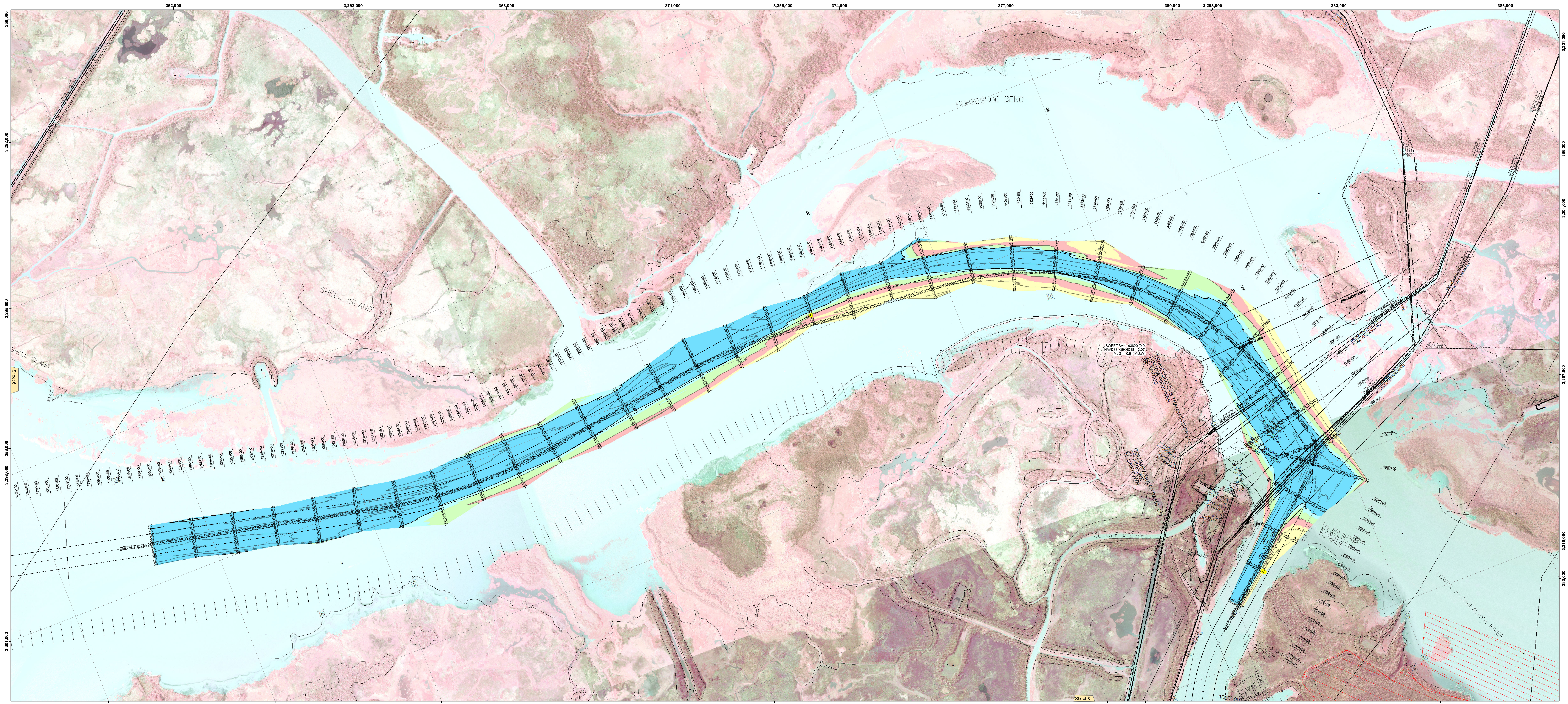




US Army Corps of Engineers District: CEMVN



**LEGEND**

--- Federal Navigation Channel	--- Cable Area	□ Borrow Area	■ -12' and above
— Federal Navigation Center Line	□ Placement Area	● Shoalest Sounding**	■ -12' to -15'
— As-built Pipeline/Cable	□ Anchorage Area	★ Beacon, General	■ -15' to -18'
--- Unconfirmed Pipeline/Cable	⊗ Obstruction Point	★ Red Navigation Buoy	■ -18' to -20'
— Project Depth Contour	⚓ Wrecks-Submerged	★ Green Navigation Buoy	■ -20' and below
			3 Fluff Thickness*

Horizontal Coordinate System:  
North American Datum of 1983 (NAD83), projected to the State Plane Coordinate System (SPCS), Louisiana South Zone. Distance units in U.S. Survey Feet.

Vertical Datum:  
Soundings are shown in feet and indicate depths below Mean Low Gulf Datum (MLG). Datum Relationships for gage 03820 as of August 2013.  
-0.7' MLLW = 0.0' NAVD88 = 2.9' MLG

Distances on the Atchafalaya River are shown at 1 mile intervals.

The location of navigation aids are based on and provided by the U.S. Coast Guard.  
2019 Aerial Photography data source: PAR, LLC (1998 DOQQ imagery in green).  
Reference is N.O.A.A. Navigation Chart No. 11354.

\*\* Shoalest Sounding per Quarter per Reach.

\*\*\* High frequency (200 kHz) survey data represents the first signal return at a sounding location and will include suspended solids, known as "fluff", if present. Low frequency (20 kHz) survey data normally penetrates through this "fluff" layer to depict elevations of consolidated bottom material. Low frequency accuracies may vary depending on channel conditions and bathymeter settings.

Gage Reading: DM 12: 4.72 MLG  
Sea Conditions: CALM  
Vessel Name: M/V LAFORCHE  
Survey Type: CONDITION  
Sounding Frequency\*\*\*: HIGH

Scale: 0 800 1,600 2,400 3,200 4,000 Feet

**NOTES:**

Horizontal Coordinate System:  
North American Datum of 1983 (NAD83), projected to the State Plane Coordinate System (SPCS), Louisiana South Zone. Distance units in U.S. Survey Feet.

Vertical Datum:  
Soundings are shown in feet and indicate depths below Mean Low Gulf Datum (MLG). Datum Relationships for gage 03820 as of August 2013.  
-0.7' MLLW = 0.0' NAVD88 = 2.9' MLG

Distances on the Atchafalaya River are shown at 1 mile intervals.

The location of navigation aids are based on and provided by the U.S. Coast Guard.  
2019 Aerial Photography data source: PAR, LLC (1998 DOQQ imagery in green).  
Reference is N.O.A.A. Navigation Chart No. 11354.

\*\* Shoalest Sounding per Quarter per Reach.

\*\*\* High frequency (200 kHz) survey data represents the first signal return at a sounding location and will include suspended solids, known as "fluff", if present. Low frequency (20 kHz) survey data normally penetrates through this "fluff" layer to depict elevations of consolidated bottom material. Low frequency accuracies may vary depending on channel conditions and bathymeter settings.

**DISCLAIMER:** The United States Government neither endorses nor disendorses any commercial products or services, nor does it make any warranty, expressed or implied, regarding the accuracy, reliability, or completeness of any information provided by any third party. The use of any trade names or product names is for identification purposes only and does not constitute an endorsement or approval of the quality or value of such products or services. The use of any trade names or product names is for identification purposes only and does not constitute an endorsement or approval of the quality or value of such products or services. The use of any trade names or product names is for identification purposes only and does not constitute an endorsement or approval of the quality or value of such products or services.

Author:	Checked By:
Reviewed:	Checked By:
Checked:	Checked By:
Approved:	Checked By:

**ATCHAFALAYA RIVER**  
**CREWBOAT CUT CHANNEL**  
**AR\_07\_CBC\_20220706\_CS**  
**06 July 2022**

**Sheet Reference Number**  
**7 of 16**