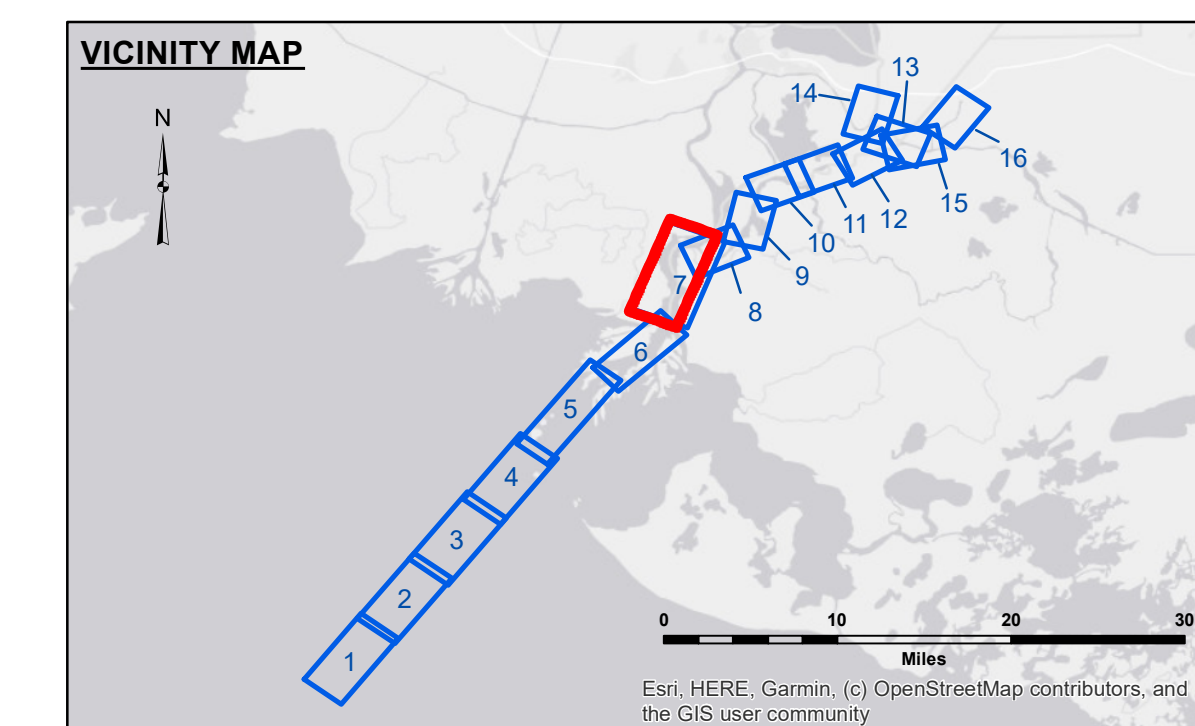
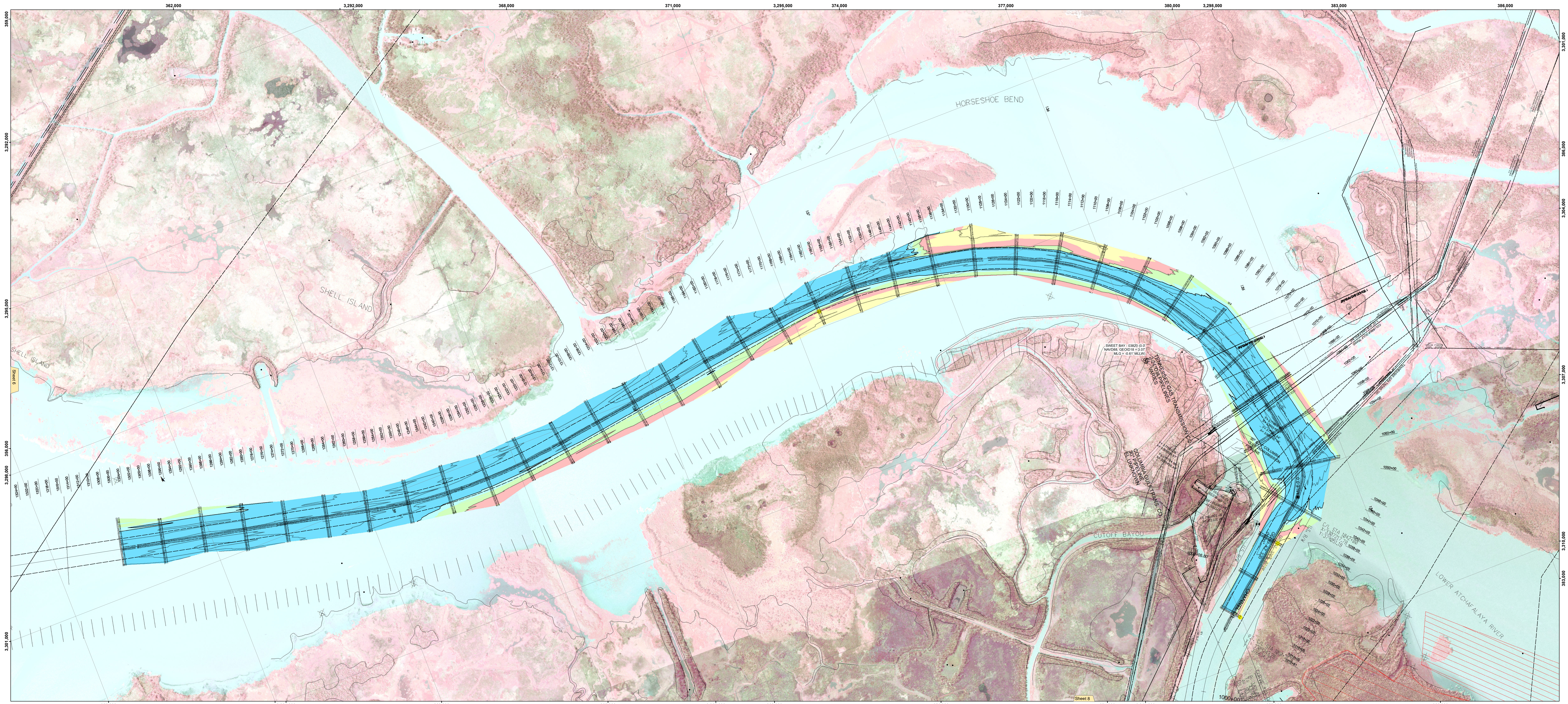




US Army Corps of Engineers District: CEMVN



LEGEND

--- Federal Navigation Channel	--- Cable Area	□ Borrow Area	■ -12' and above
— Federal Navigation Center Line	□ Placement Area	● Shoalest Sounding**	■ -12' to -15'
— As-built Pipeline/Cable	□ Anchorage Area	★ Beacon, General	■ -15' to -18'
--- Unconfirmed Pipeline/Cable	⊗ Obstruction Point	★ Red Navigation Buoy	■ -18' to -20'
— Project Depth Contour	⚓ Wrecks-Submerged	★ Green Navigation Buoy	■ -20' and below
			3 Fluff Thickness*

Horizontal Coordinate System:
North American Datum of 1983 (NAD83), projected to the State Plane Coordinate System (SPCS), Louisiana South Zone. Distance units in U.S. Survey Feet.

Vertical Datum:
Soundings are shown in feet and indicate depths below Mean Low Gulf Datum (MLG). Datum Relationships for page 03820 as of August 2013.
-0.7' MLLW = 0.0' NAVD88 = 2.9' MLG

Distances on the Atchafalaya River are shown at 1 mile intervals.

The location of navigation aids are based on and provided by the U.S. Coast Guard.

2019 Aerial Photography data source: PAR, LLC (1998 DOQQ Imagery in green).

Reference is N.O.A.A. Navigation Chart No. 11354.

** Shoalest Sounding per Quarter per Reach.

*** High frequency (200 kHz) survey data represents the first signal return at a sounding location and will include suspended solids, known as "fluff", if present. Low frequency (20 kHz) survey data normally penetrates through this "fluff" layer to depict elevations of consolidated bottom material. Low frequency accuracies may vary depending on channel conditions and bathymeter settings.

Gage Reading: DM 12: 5.37 MLG AVG
Sea Conditions: CALM
Vessel Name: M/V VALENTOUR
Survey Type: CONDITION
Sounding Frequency***: LOW

Scale: 0 800 1,600 2,400 3,200 4,000 Feet

NOTES:

Horizontal Coordinate System:
North American Datum of 1983 (NAD83), projected to the State Plane Coordinate System (SPCS), Louisiana South Zone. Distance units in U.S. Survey Feet.

Vertical Datum:
Soundings are shown in feet and indicate depths below Mean Low Gulf Datum (MLG). Datum Relationships for page 03820 as of August 2013.
-0.7' MLLW = 0.0' NAVD88 = 2.9' MLG

Distances on the Atchafalaya River are shown at 1 mile intervals.

The location of navigation aids are based on and provided by the U.S. Coast Guard.

2019 Aerial Photography data source: PAR, LLC (1998 DOQQ Imagery in green).

Reference is N.O.A.A. Navigation Chart No. 11354.

** Shoalest Sounding per Quarter per Reach.

*** High frequency (200 kHz) survey data represents the first signal return at a sounding location and will include suspended solids, known as "fluff", if present. Low frequency (20 kHz) survey data normally penetrates through this "fluff" layer to depict elevations of consolidated bottom material. Low frequency accuracies may vary depending on channel conditions and bathymeter settings.

DISTRIBUTION STATEMENT: This document is the property of the U.S. Army Corps of Engineers. It is loaned to your organization for your use only. It is not to be distributed outside your organization. If you have any questions regarding this document, please contact the District Engineer, New Orleans District, at (504) 388-1000.

DISCLAIMER: The United States Government is authorized to reproduce and distribute reprints for government purposes not withstanding any copyright notation that may appear hereon. However, the United States Government does not warrant the accuracy or completeness of the information furnished herein. The user assumes all liability for any damage or loss resulting from the use of the information furnished herein.

DATE: 25 April 2023

Author:	Checked By:
Revised:	CHAMPNE/ADAMS
Drawn:	Placed By:
Chief Survey Section:	JH
Checked:	
Chief Waterways Maintenance Section:	JH

ATCHAFALAYA RIVER
CREWBOAT CUT CHANNEL
AR_07_CBC_20230425_CS
25 April 2023

Sheet Reference Number
7 of 16

Revision Number:
4.2-20230425