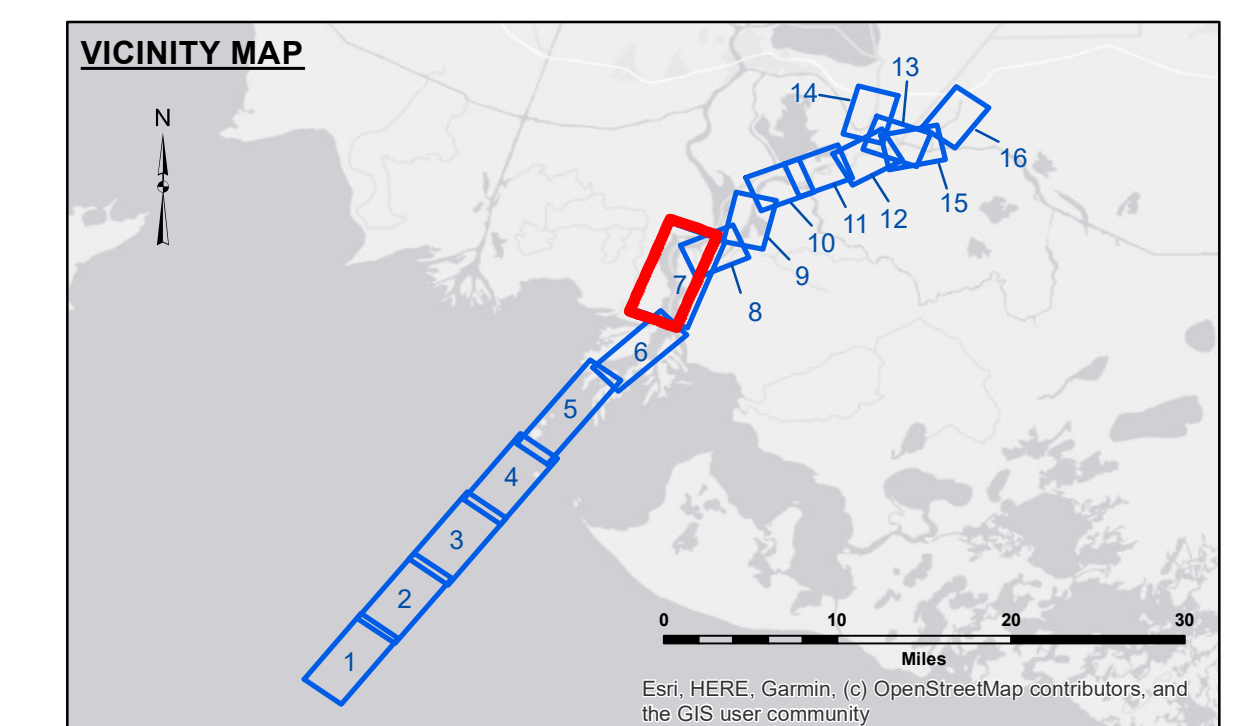
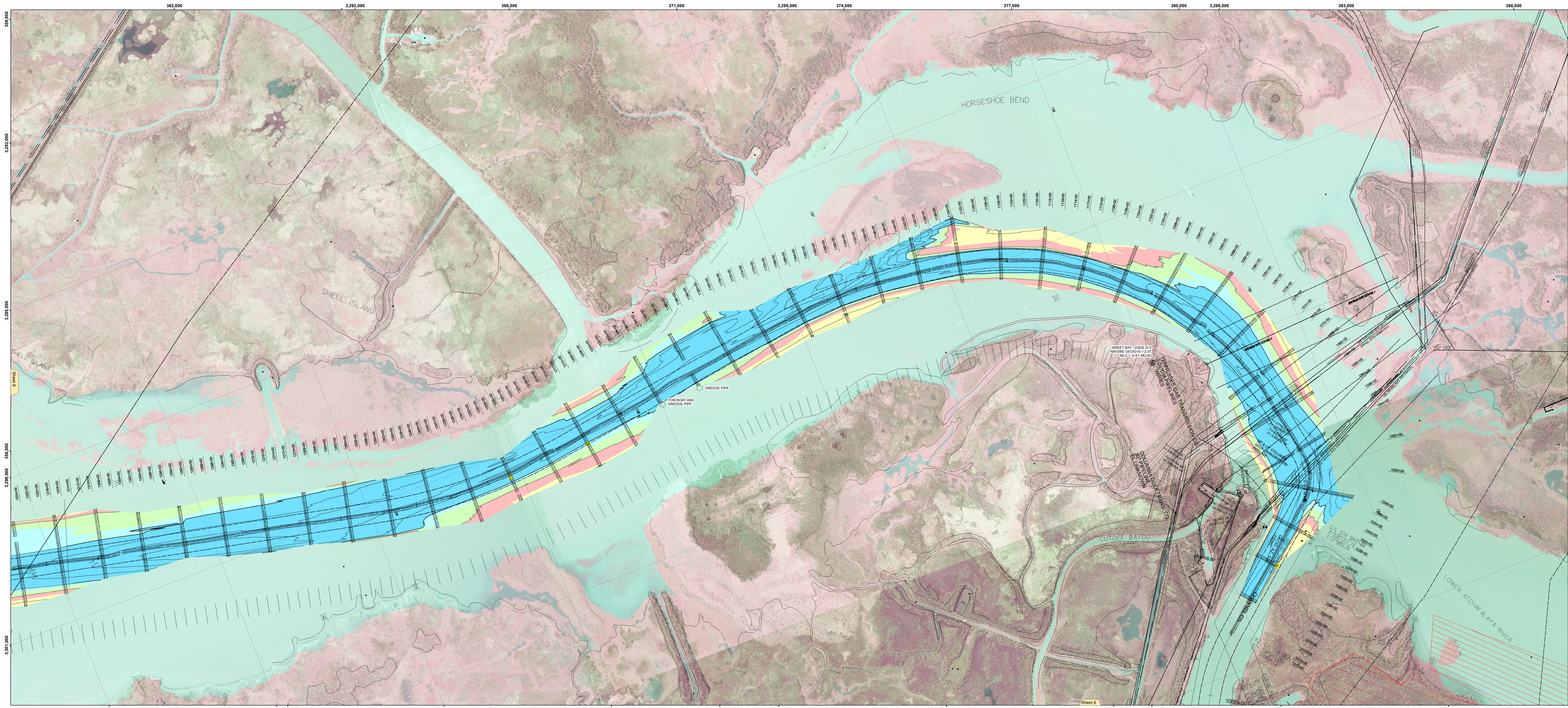
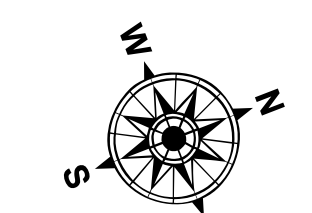




US Army Corps of Engineers
District: CEMVN



LEGEND			
	Federal Navigation Channel		Placement Area
	Federal Navigation Center Line		Cable Area
	As-built Pipeline/Cable		Borrow Area
	Unconfirmed Pipeline/Cable		Shoalest Sounding**
	Project Depth Contour		Beacon, General
	Obstruction Point		Red Navigation Buoy
	Wrecks-Submerged		Green Navigation Buoy
			-12' and above
			-12' to -15'
			-15' to -18'
			-18' to -20'
			-20' and below
			Fluff Thickness*



Gage Reading:	DM 12: 5.07 MLG
Sea Conditions:	CALM
Vessel Name:	MV VALENTOUR
Survey Type:	CONDITION
Sounding Frequency**:	HIGH

NOTES:

Horizontal Coordinate System:
North American Datum of 1983 (NAD83), projected to the State Plane Coordinate System (SPCS), Louisiana South Zone. Distance units in U.S. Survey Feet.

Vertical Datum:
Soundings are shown in feet and indicate depths below Mean Low Gull Datum (MLG). Datum Relationships for gage 03820 as of August 2020.
0.0' NAVD83 = 3.07' MLG

Distances on the Atchafalaya River are shown at 1 mile intervals.
The location of navigation aids are based on and provided by the U.S. Coast Guard.
2019 Aerial Photography data source: PAR, LLC (1998 DOQQ imagery in green).
Reference is N.O.A.A. Navigation Chart No. 11354.
** Shoalest Sounding per Quarter per Reach.

*** High frequency (200 kHz) survey data represents the first signal return at a sounding location and will include suspended solids, known as 'fluff', if present. Low frequency (20 kHz) survey data normally penetrates through this 'fluff' layer to depict elevations of consolidated bottom material. Low frequency accuracies may vary depending on channel conditions and bathymeter settings.

DISCLAIMER: The United States Government neither warrants nor makes any representation as to the accuracy, reliability, or completeness of the information contained herein. The information contained herein is provided for informational purposes only and is not intended for use in any other manner. The user assumes all liability for any and all damages, including consequential damages, resulting from the use of the information contained herein. The information contained herein is provided as is and without any warranty of any kind, express or implied. The information contained herein is provided for informational purposes only and is not intended for use in any other manner. The user assumes all liability for any and all damages, including consequential damages, resulting from the use of the information contained herein.

Submitted:	Reviewed By:	Checked By:
	CHAMPNE/ADAMS	JH
Approved:	Chief Survey Section:	Checked By:
		JH

ATCHAFALAYA RIVER
CREWBOAT CUT CHANNEL
AR_07_CBC_20240503_CS
03 May 2024

Sheet Reference Number
7 of 16
Revision Number:
4.2-20240503