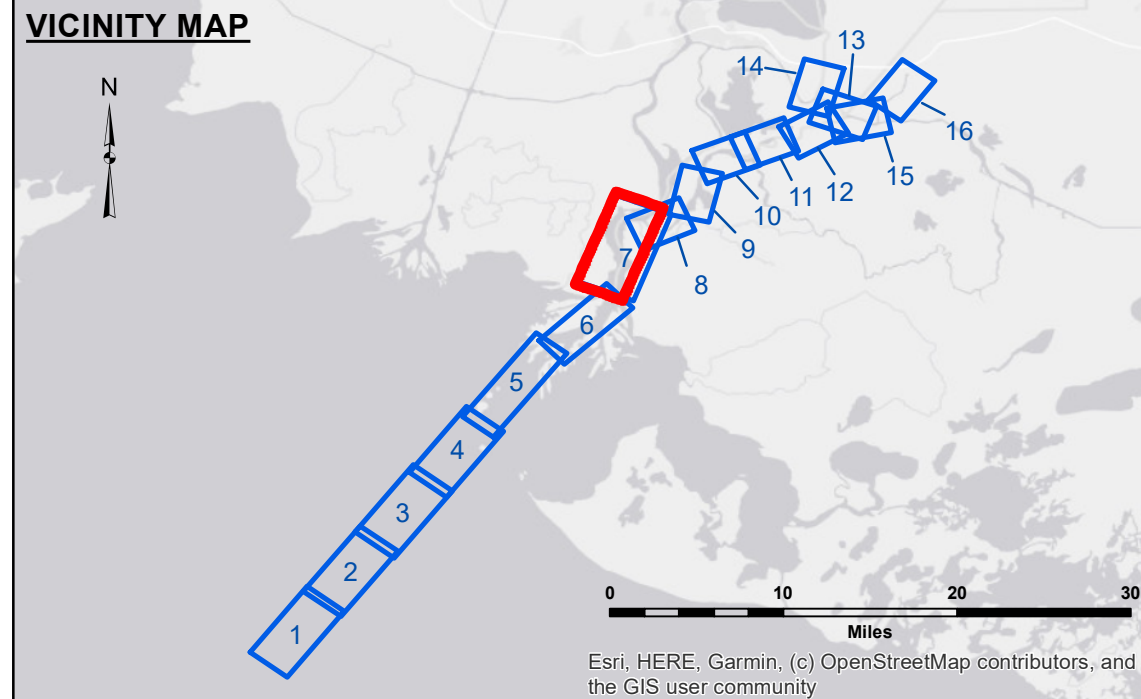


**DISTRICT NOTICE:** The United States Government neither warrants nor makes any representation as to the accuracy or completeness of the information contained herein. The user assumes all liability for any use of the information. The user assumes all liability for any use of the information. The user assumes all liability for any use of the information.

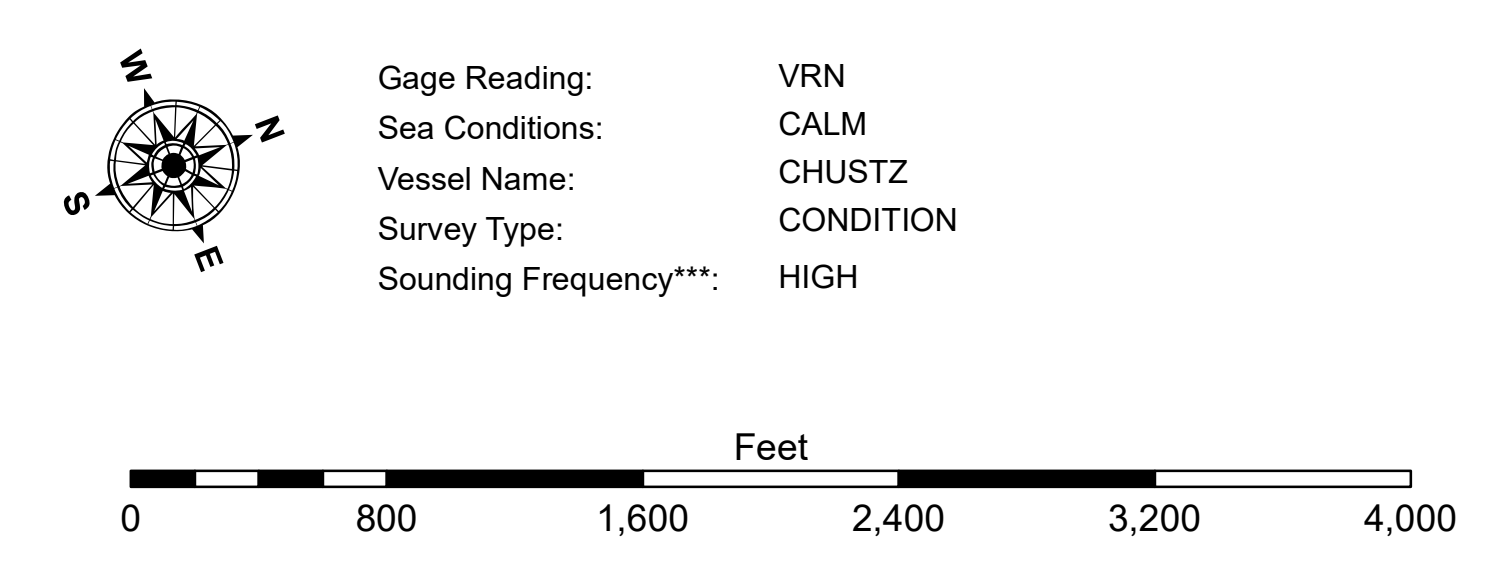
Author:	CHUSTZ
Reviewed:	JPH
Checked:	JPH

**ATCHAFALAYA RIVER  
CREWBOAT CUT CHANNEL**  
AR\_07\_CBC\_20240913\_CS\_5X5\_POSTSTORM  
13 September 2024

Sheet Reference Number  
7 of 16  
Revision Number: 4.2-20240913



LEGEND			
--- Federal Navigation Channel	--- Cable Area	□ Borrow Area	-12' and above
— Federal Navigation Center Line	□ Placement Area	● Shoalest Sounding**	-12' to -15'
— As-built Pipeline/Cable	□ Anchorage Area	★ Beacon, General	-15' to -18'
..... Unconfirmed Pipeline/Cable	⊗ Obstruction Point	◆ Red Navigation Buoy	-18' to -20'
— Project Depth Contour	⚓ Wrecks-Submerged	◆ Green Navigation Buoy	-20' and below
			3 Fluff Thickness*



**NOTES:**  
Horizontal Coordinate System: North American Datum of 1983 (NAD83), projected to the State Plane Coordinate System (SPCS), Louisiana South Zone. Distance units in U.S. Survey Feet.  
Vertical Datum: Soundings are shown in feet and indicate depths below Mean Low Gulf Datum (MLG). Datum Relationships for gage 03820 as of August 2020: 0.0' NAVD83 = 3.07' MLG.  
Distances on the Atchafalaya River are shown at 1 mile intervals.  
The location of navigation aids are based on and provided by the U.S. Coast Guard.  
2019 Aerial Photography data source: PAR, LLC (1998 DOQQ Imagery in green).  
Reference is N.O.A.A. Navigation Chart No. 11354.  
\*\* Shoalest Sounding per Quarter Per Reach.  
\*\*\* High frequency (200 kHz) survey data represents the first signal return at a sounding location and will include suspended solids, known as 'fluff', if present. Low frequency (20 kHz) survey data normally penetrates through this 'fluff' layer to depict elevations of consolidated bottom material. Low frequency accuracies may vary depending on channel conditions and bathymeter settings.