

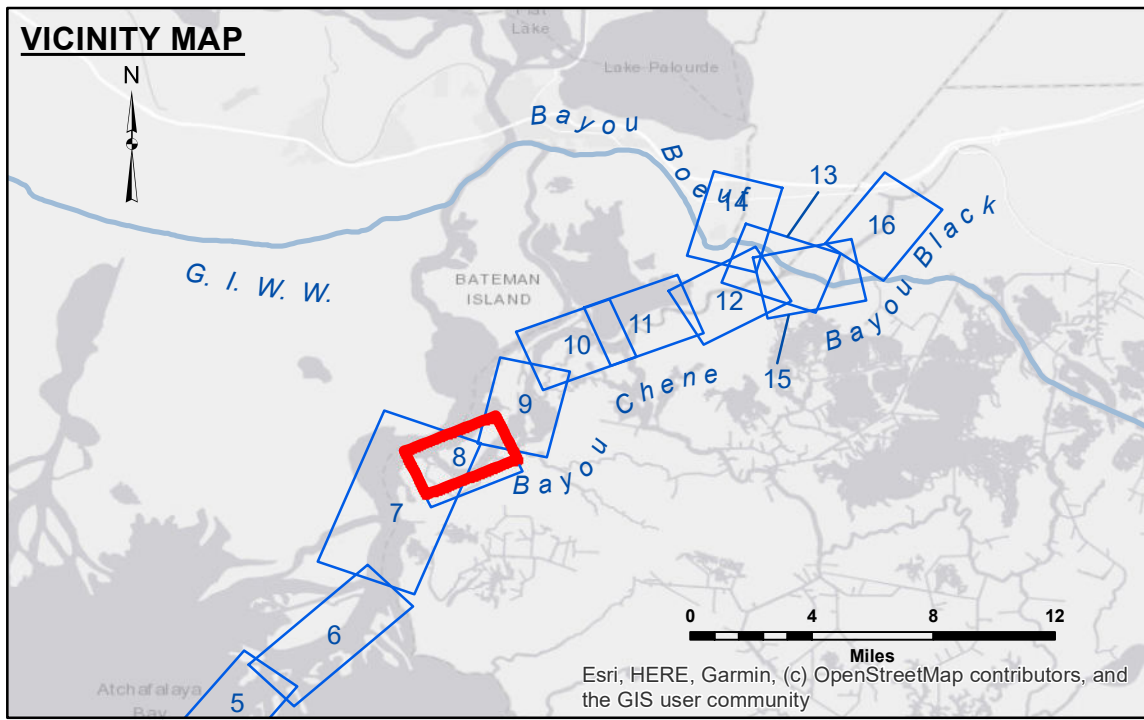
DISCLAIMER
 The data represented on this map was derived from the results of a data collection/processing for a specific US Army Corps of Engineers project. It is not intended for use for any other purpose. The user is responsible for the accuracy, completeness, and timeliness of the data. The application of the data for other than its intended purpose is not warranted. Data Constants: Hydrographic survey data is subject to change rapidly due to several factors including but not limited to: dredging, sedimentation, and channel migration. The user is responsible for the accuracy of the data. The information depicted on this map represents the results of a survey conducted on the date of the survey. It is not intended to represent the general condition existing at that time.

ACCESS LIMITS
 The United States Government furnishes these data and the recipient accepts and uses them with the express understanding that the data are not to be used for any purpose other than that for which they were prepared, or implied concerning the accuracy, completeness, readability, usability or suitability, for any particular purpose of the recipient. The recipient understands that the data are provided under no liability whatsoever to any person by reason of any use made hereof. These data belong to the Government. Therefore, the recipient agrees to indemnify and hold the Government harmless from all claims, damages, and expenses, including reasonable attorneys' fees, that may be incurred by the Government as a result of the use of these data by others without the written consent of the Government. The information depicted on this map represents the results of a survey conducted on the date of the survey. It is not intended to represent the general condition existing at that time.

Submitted:	Surveyed By:	Checked By:
Recommended:	Plotted By:	Checked By:
Approved:	Chief, Survey Section	Chief, Waterways Maintenance Section
	PM, JA	AC
	BD	

**ATCHAFALAYA RIVER
 BAYOU CHENE
 AR_08_CHE_20190822_CS
 22 August 2019**

**Sheet Reference Number
 8 of 16**



LEGEND		
--- Federal Navigation Channel	○ Cable Area	□ Borrow Area
— Federal Navigation Center Line	■ Placement Area	● Shoalest Sounding**
— As-built Pipeline/Cable	⊗ Anchorage Area	★ Beacon, General
..... Unconfirmed Pipeline/Cable	⊗ Obstruction Point	◆ Red Navigation Buoy
— Project Depth Contour	⚓ Wrecks-Submerged	◆ Green Navigation Buoy
		■ -15' and above
		■ -15' to -20'
		■ -20' and below

NOTES:

Horizontal Coordinate System: North American Datum of 1983 (NAD83), projected to the State Plane Coordinate System (SPCS), Louisiana South Zone. Distance units in U.S. Survey Feet.

Vertical Datum: Soundings are shown in feet and indicate depths below Mean Low Gulf Datum (MLG). Datum Relationships for gage 03820 as of August 2013: -0.7' MLLW = 0.0' NAVD88 = 2.9' MLG

Distances on the Atchafalaya River are shown at 1 mile intervals.

The location of navigation aids are base on and provided by the U.S. Coast Guard.

2019 Aerial Photography data source: P.A.R. LLC

Reference is N.O.A. Navigation Chart No. 11354.

** Shoalest Sounding per Quarter per Reach.

*** High frequency (200 kHz) survey data represents the first signal return at a sounding location and will include suspended solids, known as "fluff", if present. Low frequency (20 kHz) survey data normally penetrates through this "fluff" layer to depict elevations of consolidated bottom material. Low frequency accuracies may vary depending on channel conditions and fathometer settings.

Gage Reading: SWEETBAY: 4.8 MLG
 Sea Conditions: CALM
 Vessel Name: OB-167
 Survey Type: CONDITION
 Sounding Frequency***: LOW

Scale: 0 400 800 1,200 1,600 2,000 Feet

NOTES:

Horizontal Coordinate System: North American Datum of 1983 (NAD83), projected to the State Plane Coordinate System (SPCS), Louisiana South Zone. Distance units in U.S. Survey Feet.

Vertical Datum: Soundings are shown in feet and indicate depths below Mean Low Gulf Datum (MLG). Datum Relationships for gage 03820 as of August 2013: -0.7' MLLW = 0.0' NAVD88 = 2.9' MLG

Distances on the Atchafalaya River are shown at 1 mile intervals.

The location of navigation aids are base on and provided by the U.S. Coast Guard.

2019 Aerial Photography data source: P.A.R. LLC

Reference is N.O.A. Navigation Chart No. 11354.

** Shoalest Sounding per Quarter per Reach.

*** High frequency (200 kHz) survey data represents the first signal return at a sounding location and will include suspended solids, known as "fluff", if present. Low frequency (20 kHz) survey data normally penetrates through this "fluff" layer to depict elevations of consolidated bottom material. Low frequency accuracies may vary depending on channel conditions and fathometer settings.