

Distribution Liability: The data represents the results of data collection/processing for a specific US Army Corps of Engineers project. It is only valid for its intended use, control, time and accuracy specifications. The user is responsible for the results of the application of the data for other than its intended purpose.

Data Constraints: Hydrographic survey data is subject to change rapidly due to several factors including but not limited to encroaching vegetation, shifting sandbars, and other natural processes. The Army Corps of Engineers does not guarantee the accuracy of the hydrographic conditions which develop after the date of the information depicted on the map represents the results of a survey conducted at that time. The recipient may not transfer these data to others without also transferring this Disclaimer.

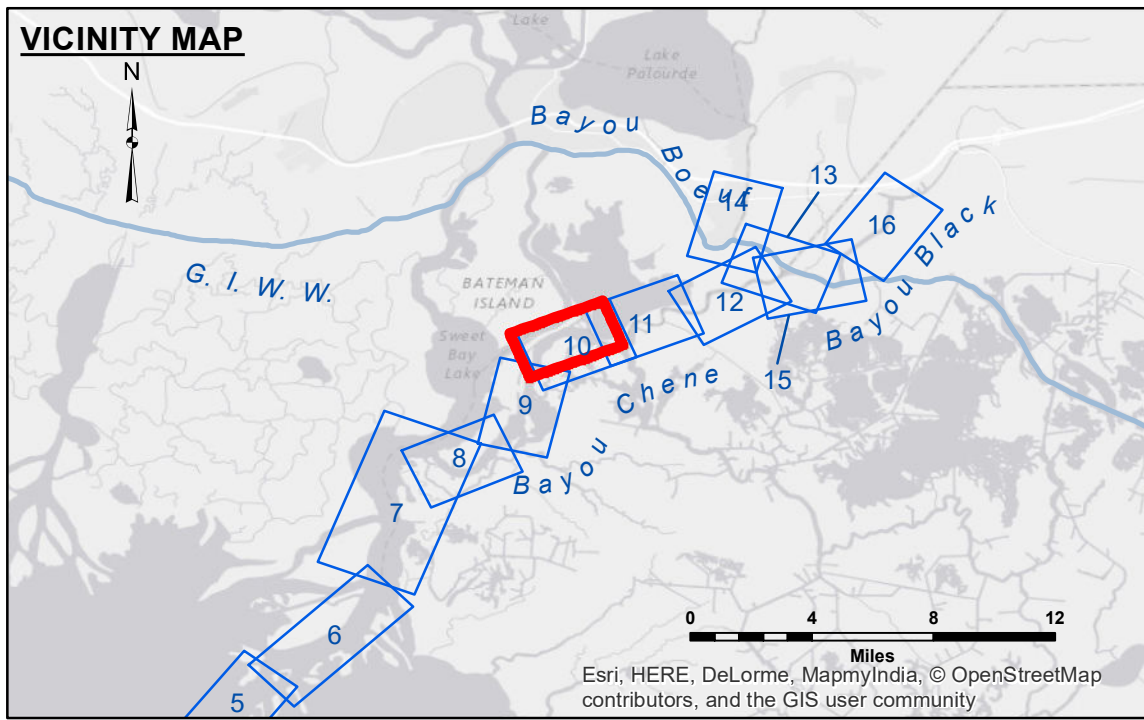
Product Warranties: The United States Government furnishes these data and the recipient accepts and uses them with the express understanding that the data are not intended for navigation, safety, or liability purposes. The user is responsible for the accuracy, completeness, reliability, usability or suitability for any particular purpose of the data. The user shall indemnify, defend and hold the United States Government harmless from and against all claims, damages, losses and expenses, including reasonable attorneys' fees, under no liability whatsoever to any person by reason of any use made hereof. These data belong to the Government. Therefore, the recipient shall not disseminate, distribute, or otherwise use these data to others without also transferring this Disclaimer.

The information depicted on the map represents the results of a survey conducted at that time. The recipient may not transfer these data to others without also transferring this Disclaimer.

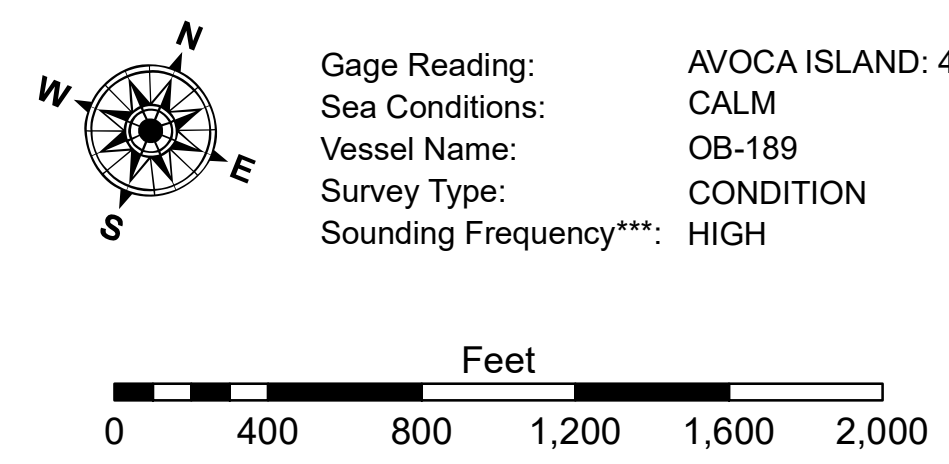
Submitted:	Surveyed By:	RYLAND/SONNER
Recommended:	Plotted By:	BD
Approved:	Checked By:	AC

U.S. ARMY CORPS OF ENGINEERS
NEW ORLEANS DISTRICT

**ATCHAFALAYA RIVER
BAYOU CHENE
AR_10_CHE_20171018_CS
18 October 2017**



LEGEND	
--- Federal Navigation Channel	○ Cable Area
— Federal Navigation Center Line	□ Placement Area
— As-built Pipeline/Cable	□ Anchorage Area
..... Unconfirmed Pipeline/Cable	⊗ Obstruction Point
— Project Depth Contour	⚓ Wrecks-Submerged
□ Borrow Area	★ Beacon, General
● Shoalest Sounding**	◆ Red Navigation Buoy
○ -15' and above	◆ Green Navigation Buoy
○ -15' to -20'	
○ -20' and below	



NOTES:

Horizontal Coordinate System: North American Datum of 1983 (NAD83), projected to the State Plane Coordinate System (SPCS), Louisiana South Zone. Distance units in U.S. Survey Feet.

Vertical Datum: Soundings are shown in feet and indicate depths below Mean Low Gulf Datum (MLG). Datum Relationships for gage 03820 as of August 2013: -0.7' MLLW = 0.0' NAVD88 = 2.9' MLG

Distances on the Atchafalaya River are shown at 1 mile intervals.

The location of navigation aids are based on and provided by the U.S. Coast Guard.

2015 Aerial Photography data source: NAIP

Reference is N.O.A.A. Navigation Chart No. 11354.

** Shoalest Sounding per Quarter per Reach.

*** High frequency (200 kHz) survey data represents the first signal return at a sounding location and will include suspended solids, known as "fluff", if present. Low frequency (20 kHz) survey data normally penetrates through this "fluff" layer to depict elevations of consolidated bottom material. Low frequency accuracies may vary depending on channel conditions and fathometer settings.