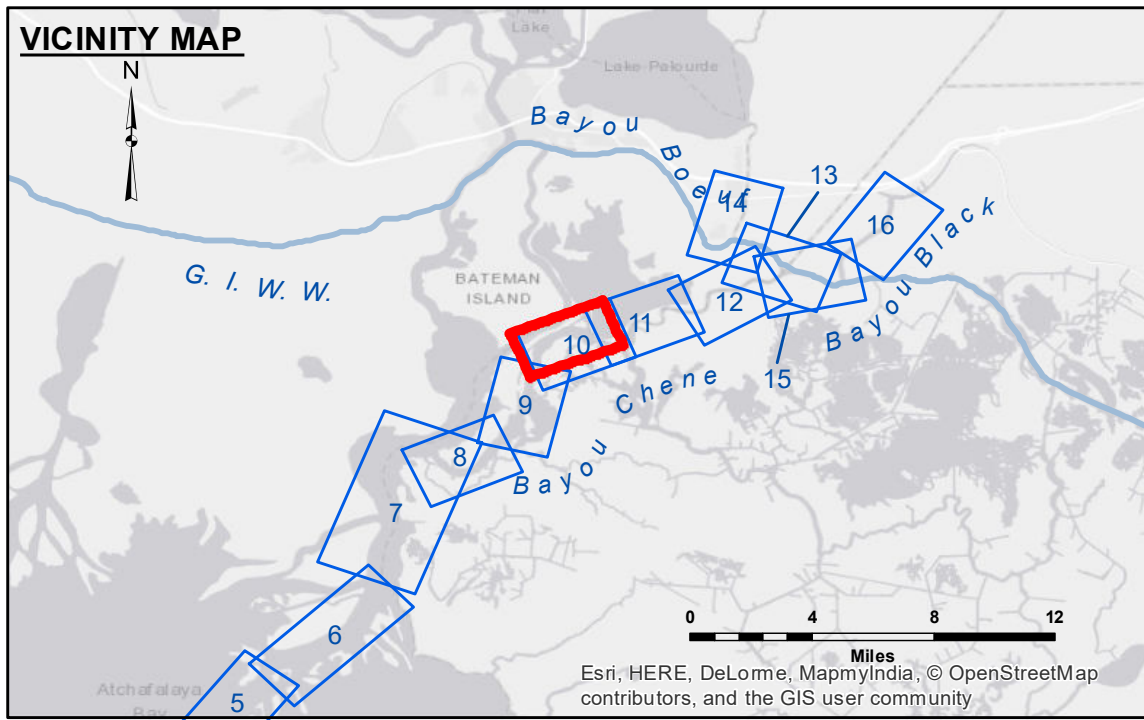


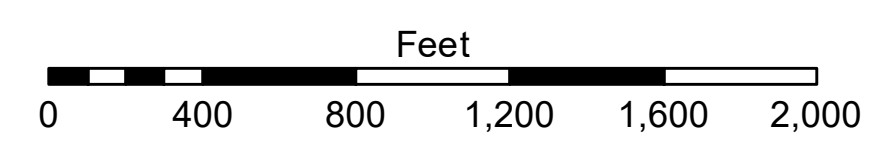
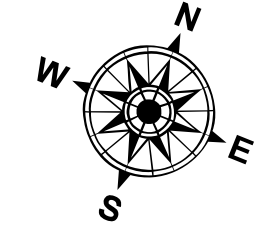
**DISCLAIMER**  
 The information depicted on this map represents the results of a survey conducted by the U.S. Army Corps of Engineers. The user is responsible for the accuracy, reliability, and use of the information. The user is not to be held liable for any damages, including but not limited to, resulting from the use of this information. The information is provided for informational purposes only and is not to be used for any other purpose. The information is not to be used for any purpose other than that for which it was intended. The information is not to be used for any purpose other than that for which it was intended. The information is not to be used for any purpose other than that for which it was intended.

U.S. ARMY CORPS OF ENGINEERS NEW ORLEANS DISTRICT	
Submitted: RYLAND/ADAMS	Checked By: AC
Recommended: Chet Survey Section	Approved: Chet Waterways Maintenance Section

**ATCHAFALAYA RIVER  
 BAYOU CHENE  
 AR\_10\_CHE\_20181019\_CS  
 19 October 2018**



LEGEND	
--- Federal Navigation Channel	○ Cable Area
— Federal Navigation Center Line	□ Placement Area
— As-built Pipeline/Cable	□ Anchorage Area
..... Unconfirmed Pipeline/Cable	⊗ Obstruction Point
— Project Depth Contour	⚓ Wrecks-Submerged
□ Borrow Area	★ Beacon, General
● Shoalest Sounding**	◆ Red Navigation Buoy
◆ -15' and above	◆ Green Navigation Buoy
◆ -15' to -20'	
◆ -20' and below	



Gage Reading: AMELIA: 3.8 MLG  
 Sea Conditions: CALM  
 Vessel Name: OB-189  
 Survey Type: CONDITION  
 Sounding Frequency\*\*\*: HIGH

**NOTES:**  
 Horizontal Coordinate System: North American Datum of 1983 (NAD83), projected to the State Plane Coordinate System (SPCS), Louisiana South Zone. Distance units in U.S. Survey Feet.  
 Vertical Datum: Soundings are shown in feet and indicate depths below Mean Low Gulf Datum (MLG). Datum Relationships for gage 03820 as of August 2013: -0.7' MLLW = 0.0' NAVD88 = 2.9' MLG  
 Distances on the Atchafalaya River are shown at 1 mile intervals.  
 The location of navigation aids are based on and provided by the U.S. Coast Guard.  
 2015 Aerial Photography data source: NAIP  
 Reference is N.O.A. Navigation Chart No. 11354.  
 \*\* Shoalest Sounding per Quarter per Reach.  
 \*\*\* High frequency (200 kHz) survey data represents the first signal return at a sounding location and will include suspended solids, known as "fluff", if present. Low frequency (20 kHz) survey data normally penetrates through this "fluff" layer to depict elevations of consolidated bottom material. Low frequency accuracies may vary depending on channel conditions and fathometer settings.

**Sheet Reference Number  
 10 of 16**