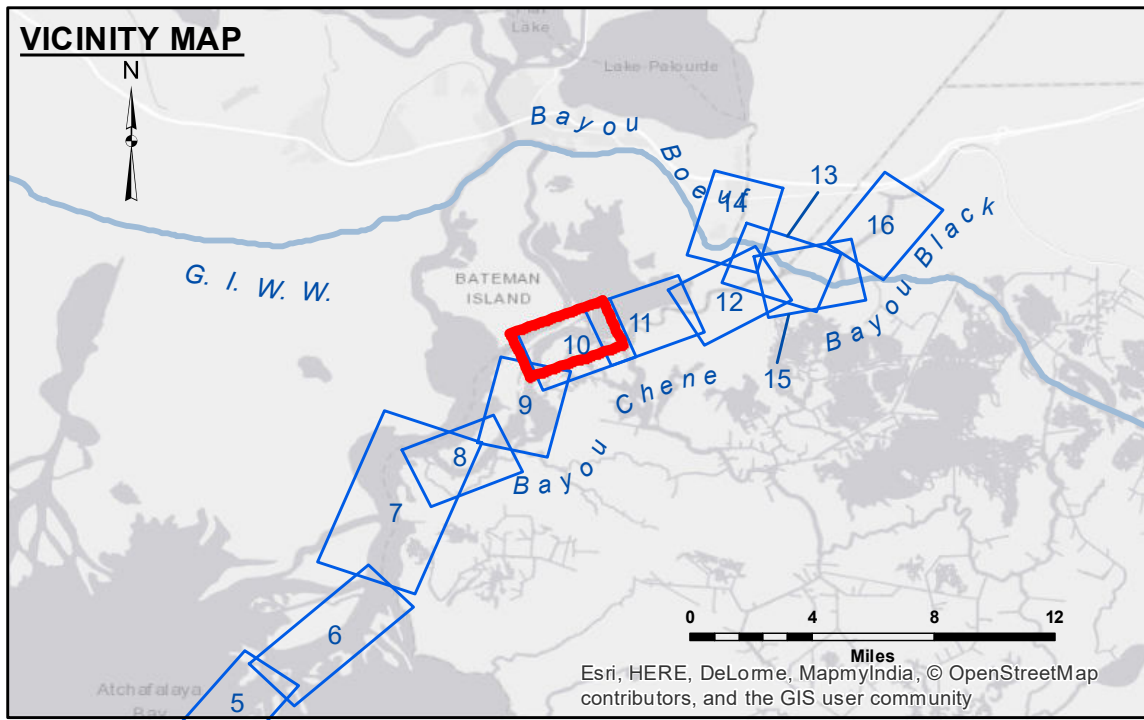


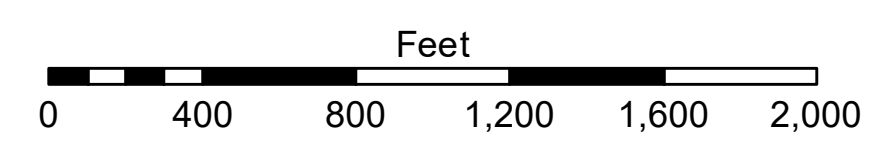
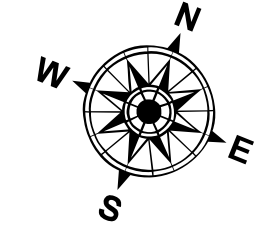
DISCLAIMER
 The information depicted on this map represents the results of a survey conducted by the U.S. Army Corps of Engineers. The user is responsible for the accuracy, reliability, usability, or suitability of the information for any purpose other than that intended by the U.S. Army Corps of Engineers. The user is responsible for the accuracy, reliability, usability, or suitability of the information for any purpose other than that intended by the U.S. Army Corps of Engineers. The user is responsible for the accuracy, reliability, usability, or suitability of the information for any purpose other than that intended by the U.S. Army Corps of Engineers.

Submitted:	RYLAND/ADAMS
Recommended:	BD
Approved:	AC

ATCHAFALAYA RIVER
BAYOU CHENE
AR_10_CHE_20190313_CS
13 March 2019



LEGEND	
--- Federal Navigation Channel	○ Cable Area
— Federal Navigation Center Line	□ Placement Area
— As-built Pipeline/Cable	□ Anchorage Area
..... Unconfirmed Pipeline/Cable	⊗ Obstruction Point
— Project Depth Contour	⚓ Wrecks-Submerged
□ Borrow Area	★ Beacon, General
● Shoalest Sounding**	♦ Red Navigation Buoy
★ Beacon, General	♦ Green Navigation Buoy
■ -15' and above	
■ -15' to -20'	
■ -20' and below	



Gage Reading: AVOCA ISLAND: 6.95 MLG
 Sea Conditions: CALM
 Vessel Name: M/V VALENTOUR
 Survey Type: CONDITION
 Sounding Frequency***: HIGH

NOTES:
 Horizontal Coordinate System: North American Datum of 1983 (NAD83), projected to the State Plane Coordinate System (SPCS), Louisiana South Zone. Distance units in U.S. Survey Feet.
 Vertical Datum: Soundings are shown in feet and indicate depths below Mean Low Gulf Datum (MLG). Datum Relationships for gage 03820 as of August 2013: -0.7' MLLW = 0.0' NAVD88 = 2.9' MLG
 Distances on the Atchafalaya River are shown at 1 mile intervals.
 The location of navigation aids are based on and provided by the U.S. Coast Guard.
 2015 Aerial Photography data source: NAIP
 Reference is N.O.A. Navigation Chart No. 11354.
 ** Shoalest Sounding per Quarter per Reach.
 *** High frequency (200 kHz) survey data represents the first signal return at a sounding location and will include suspended solids, known as "fluff", if present. Low frequency (20 kHz) survey data normally penetrates through this "fluff" layer to depict elevations of consolidated bottom material. Low frequency accuracies may vary depending on channel conditions and fathometer settings.

Sheet Reference Number
10 of 16