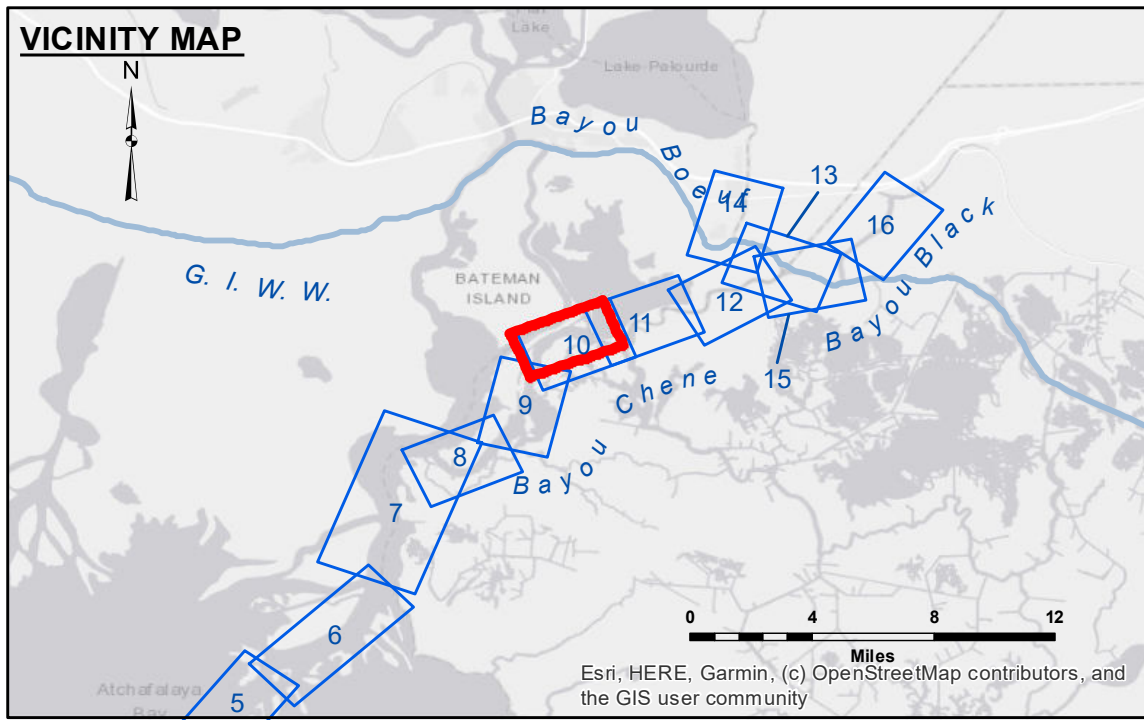


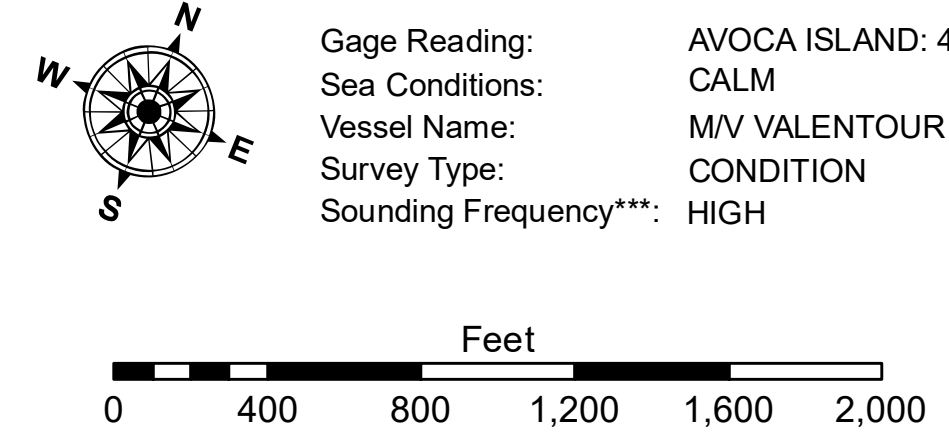
DISCLAIMER: The data represents the results of data collection processing for a specific US Army Corps of Engineers project. The user is responsible for the results and accuracy of the data. The application of the data for other than its intended purpose is not recommended. The user is responsible for the results and accuracy of the data. The application of the data for other than its intended purpose is not recommended. The user is responsible for the results and accuracy of the data. The application of the data for other than its intended purpose is not recommended.

Submitted:	Surveyed By: RYLAND/ADAMS
Recommended:	Plotted By: BD
Approved:	Checked By: AC

**ATCHAFALAYA RIVER
BAYOU CHENE
AR_10_CHE_20200110_CS
10 January 2020**



LEGEND	
--- Federal Navigation Channel	● Cable Area
— Federal Navigation Center Line	■ Placement Area
— As-built Pipeline/Cable	□ Anchorage Area
..... Unconfirmed Pipeline/Cable	⊗ Obstruction Point
— Project Depth Contour	✈ Wrecks-Submerged
□ Borrow Area	★ Beacon, General
● Shoalest Sounding**	◆ Red Navigation Buoy
★ Beacon, General	◆ Green Navigation Buoy
◆ Red Navigation Buoy	■ -15' and above
◆ Green Navigation Buoy	■ -15' to -20'
	■ -20' and below



NOTES:
Horizontal Coordinate System: North American Datum of 1983 (NAD83), projected to the State Plane Coordinate System (SPCS), Louisiana South Zone. Distance units in U.S. Survey Feet.
Vertical Datum: Soundings are shown in feet and indicate depths below Mean Low Gulf Datum (MLG). Datum Relationships for gage 03820 as of August 2013: -0.7' MLLW = 0.0' NAVD88 = 2.9' MLG
Distances on the Atchafalaya River are shown at 1 mile intervals.
The location of navigation aids are base on and provided by the U.S. Coast Guard.
2019 Aerial Photography data source: P.A.R. LLC
Reference is N.O.A. Navigation Chart No. 11354.
** Shoalest Sounding per Quarter per Reach.
*** High frequency (200 kHz) survey data represents the first signal return at a sounding location and will include suspended solids, known as "fluff", if present. Low frequency (20 kHz) survey data normally penetrates through this "fluff" layer to depict elevations of consolidated bottom material. Low frequency accuracies may vary depending on channel conditions and fathometer settings.

**Sheet Reference Number
10 of 16**