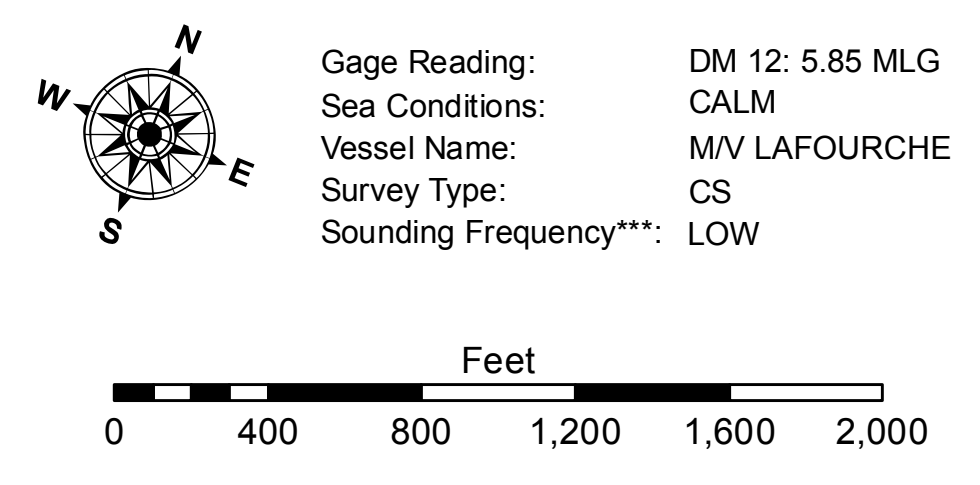


LEGEND

--- Federal Navigation Channel	○ Cable Area	□ Borrow Area
— Federal Navigation Center Line	■ Placement Area	● Shoalest Sounding**
— As-built Pipeline/Cable	⊗ Anchorage Area	★ Beacon, General
⋯ Unconfirmed Pipeline/Cable	⊗ Obstruction Point	◆ Red Navigation Buoy
— Project Depth Contour	⚓ Wrecks-Submerged	◆ Green Navigation Buoy
		■ -15' and above
		■ -15' to -20'
		■ -20' and below



NOTES:

Horizontal Coordinate System: North American Datum of 1983 (NAD83), projected to the State Plane Coordinate System (SPCS), Louisiana South Zone. Distance units in U.S. Survey Feet.

Vertical Datum: Soundings are shown in feet and indicate depths below Mean Low Gulf Datum (MLG). Datum Relationships for gage 03820 as of August 2013: -0.7' MLLW = 0.0' NAVD88 = 2.9' MLG

Distances on the Atchafalaya River are shown at 1 mile intervals.

The location of navigation aids are base on and provided by the U.S. Coast Guard.

2019 Aerial Photography data source: P.A.R. LLC
 Reference is N.O.A. Navigation Chart No. 11354.
 ** Shoalest Sounding per Quarter per Reach.
 *** High frequency (200 kHz) survey data represents the first signal return at a sounding location and will include suspended solids, known as "fluff", if present. Low frequency (20 kHz) survey data normally penetrates through this "fluff" layer to depict elevations of consolidated bottom material. Low frequency accuracies may vary depending on channel conditions and fathometer settings.



DISCLAIMER: The United States Government furnishes these data and the recipient accepts and uses them with the express understanding that the data are not warranted for any purpose other than that for which they were prepared. The user is responsible for the results of any use of the data. The application of the data for other than its intended purpose may result in injury or damage to persons or property. The user assumes all liability for any use of the data for other than its intended purpose. Data generated by the Corps of Engineers are subject to change without notice. The Corps of Engineers does not warrant the accuracy of the data for any purpose other than that for which they were prepared. The information depicted on this map represents the results of a survey conducted by the Corps of Engineers and is not to be used for any purpose other than that for which it was prepared. The Corps of Engineers does not warrant the accuracy of the data for any purpose other than that for which they were prepared.

U.S. ARMY CORPS OF ENGINEERS
NEW ORLEANS DISTRICT

Submitted:	Surveyed By: DJS/SPS
Recommended:	Plotted By: BD
Approved:	Checked By: AC

**ATCHAFALAYA RIVER
 BAYOU CHENE
 AR_10_CHE_20210325_CS
 25 March 2021**

**Sheet Reference Number
 10 of 16**

Revision Number:
4.1-20191105